

**USR 9630
User Manual
DRAFT**

**1.8 GHz DECT USB/POTS Telephone, CID,
with Handsfree**

CONTENTS

1 ENVIRONMENT AND SAFETY 4

2 ABOUT YOUR PHONE..... 5

YOUR HANDSET 5

ICONS ON YOUR HANDSET DISPLAY 6

EXPLORE THE MENUS 6

Main menu 6

PERSONAL SET 6

Call records menu 6

3 SETTING UP YOUR PHONE 7

SETTING UP THE HANDSET(S) AND THE BASE 7

Charging the handset 7

Switch on/off your handset 7

SETTING UP YOUR PC 8

System requirement 8

SETTING UP YOUR PHONE 8

ADJUSTING THE SPEAKER VOLUME ON YOUR PC 9

CONFIGURING YOUR SKYPE PHONE 10

REGISTERING YOUR HANDSET 10

SET YOUR HANDSET'S CLOCK 10

4 MAKING CALLS 11

GENERAL INFORMATION 11

CALL ANOTHER SKYPE USER ON YOUR CONTACT LIST 11

CALLING A LANDLINE NUMBER WITH SKYPEOUT 11

CALLING A NUMBER THRU THE LANDLINE 12

REDIALLING 12

OFF-HOOK REDIALLING 12

PHONEBOOK DIALLING 12

YOU CAN DIAL A NUMBER STORED IN THE PHONEBOOK 12

QUICK DIALLING 12

3- WAY SKYPE CONFERENCING 12

ENDING A CALL 12

ANSWERING A CALL 13

RECALL 13

CHAINING DIALLING 13

HANDSFREE CALLS 13

ADJUSTING THE VOLUME OF THE CALLER'S VOICE 14

SPEAK TO SOMEONE PRIVATELY WHEN YOU ARE ON A CALL 14

5 USING YOUR PHONEBOOK 15

VIEWING THE PHONEBOOK RECORDS 15

TO STORE A NAME AND NUMBER 15

MANAGING YOUR NUMBERS 15

Edit your entries 15

Copy your entries 15

Quick dial to entries in your private phonebook 16

Assign a quick dial key 16

Change a quick dial key 16

Delete a quick dial key 16

Delete an entry from your phonebook 16

Delete all entries in your phonebook 16

HOW MUCH SPACE IS STILL AVAILABLE IN MY PHONEBOOK? 16

6 CALL RECORDS 18

FINDING OUT WHO CALLED YOU (CALL LIST) 18

Check your call records 18

Calling back from a call record 18

Saving the call records to your phonebook 18

Delete a call records entry 18

Delete all call records 18

FINDING OUT WHO YOU HAVE CALLED (DIALLED LIST) 19

Checking your dialled records 19

saving the dial records to your phonebook 19

Deleting a dial record.....	19
Deleting the entire dial list.....	19
7 SKYPE FEATURES.....	20
CHANGING YOUR ONLINE STATUS.....	20
VOICEMAIL.....	20
Retrieving Voicemail.....	20
Deleting Voicemail.....	20
Deleting All Voicemail.....	20
CHECK YOUR SKYPE CREDITS.....	21
8 PERSONALIZING YOUR PHONE.....	22
PERSONALIZING YOUR PHONE'S DISPLAY.....	22
Give your phone a name.....	22
Adjusting the contrast.....	22
Auto answer.....	22
Turning the backlight on/off.....	22
Setting your phone's language.....	22
PERSONALIZING YOUR SOUNDS.....	23
Selecting your handset's ringing melody.....	23
Selecting your handset's ringing volume.....	23
Turning the key beep on/off.....	23
9 EXTRA FEATURES.....	24
SETTING THE TIME.....	24
Setting your handset's time.....	24
SETTING THE ALARM CLOCK.....	24
Setting your alarm time.....	24
Selecting your alarm clock's ringing melody.....	24
Setting your alarm volume.....	24
10 ADVANCED FEATURES.....	25
RECALL.....	25
DIAL MODE.....	25
PAUSE.....	25
PABX.....	25
BABY CALL.....	25
VMWI.....	26
REGISTERING A HANDSET.....	26
SELECTING A BASE.....	26
UN-REGISTERING A HANDSET.....	26
CHANGING PIN.....	26
RESETTING.....	27
SELECTING COUNTRY.....	27
11 ADDITIONAL FEATURES.....	28
KEYPAD LOCK.....	28
Locking and unlocking the keypad.....	28
SHORTCUT FOR TURNING HANDSET RINGER ON/OFF.....	28
MESSAGE WAITING INDICATION.....	28
FINDING A HANDSET.....	28
CID FIRST RING SUPPRESSION.....	28
12 USING MULTI-HANDSETS.....	29
CALL SOMEONE IN THE HOUSE.....	29
CALL SOMEONE IN THE HOUSE WHILE YOU ARE TALKING ON THE PHONE.....	29
TRANSFER YOUR CALL TO ANOTHER HANDSET.....	29
MAKE A 3-WAY CONFERENCE CALL.....	29
13 APPENDIX.....	29
DEFAULT SETTINGS.....	29
TROUBLESHOOTING.....	30

1 Environment and safety

Safety information: This telephone is not designed for making emergency telephone calls when the power fails. An alternative should be made available for access to emergency calls.

Power requirements: The product requires an electrical supply of 220 – 240 volts, single phase alternating current, excluding IT installations defined in standard EN 60950.

Battery requirements: The handset requires power source of two rechargeable NiMH batteries, size AAA 1.2V 650mAh (HR10/44). **IF THE SUPPLIED BATTERIES ARE NOT USED, A WARNING MESSAGE WILL BE DISPLAYED.**

WARNING! The electrical network is classified as dangerous according to criteria in the standard IEC 60950. The only way to power down this product is by unplugging the power supply from the electrical outlet. Ensure the electrical outlet is located close to the apparatus and is always easily accessible.

Safety precautions:

- Do not allow the handset to come into contact with liquids or moisture.
- Do not open the handset or base station. This could expose you to high voltages.
- Do not allow the charging contacts of the charger or the battery to come into contact with extraneous conductive materials.
- There is a slight chance that the telephone could be damaged by an electrical storm. It is recommended that users unplug the phone from the USB socket during a storm.
- Do not use the handset in an explosive hazard area such as where there is gas leaking.
- Young children should be supervised to ensure that they do not play with the telephone.

Environmental care: Please remember to observe the local regulations regarding the disposal of your packaging materials, exhausted batteries and old phone and where possible promote their recycling.

Because the phone works by sending radio signals between the base unit and the handset, wearers of hearing aids may experience interference in the form of a humming noise.

We advise that this phone should not be used near intensive care medical equipment or by persons with pacemakers.

Your phone can interfere with electrical equipment such as answering machines, TV and radio sets if placed too close. It is recommended that you position the base unit at least one meter from such appliances.

Privacy of communications may not be ensured when using this telephone.



CAUTION
RISK OF EXPLOSION IF BATTERY IS REPLACED BY AN INCORRECT TYPE. Never use non-rechargeable batteries; use recommended type supplied with this telephone. NiMH batteries must be disposed of in accordance with the applicable waste disposal regulations.

2 About your phone

Your handset

Menu & OK Key

Use to enter menus.
Use to select menu.
Use to confirm an operation.
Redial, Mute & Back Key
Use to switch between call details.
Use to enter dial list.
Use to redial last dialled number.
Use to mute/unmute a call.
Use to delete text and digits.

Talk & Recall Key

Use to make and receive calls.
Use to send recall signal.
Use to pick up or make second incoming calls on SKYPE.

Off & Exit Key

Use to end a call.
Use to exit menus.
Use to turn the handset on/off.

CID & Scroll up Key

Use to enter call list.
Use to scroll up items.
Use to increase ringer and receiver volume.

Phonebook & Scroll down Key

Use to access phonebook.
Use to scroll down items.
Use to reduce ringer and receiver volume.

Star & Keylock Key

Use to lock the keypad.

Pound, Key lock & Pause Key

Use to enter a pause.
Use to turn the ringer on/off.

Speaker Key

Use to turn the speaker on/off.

Intercom and Conference Key

Use to make intercom calls.
Use to set up 3-way conference.

SKYPE Key

Use to launch SKYPE contact list.
Use to make SKYPEOUT calls.

LED

Blink during an incoming call.
Blink during paging.
Turn on steadily during a call.



Paging Key

Use to page the handset.
Use to register a handset.

LED 1

Blinks slowly while paging the handset.
Blinks quickly during registration mode.

LED 2

On when the USB cable is connected to the PC and the base is powered.
Flash when there is data communication with USB.



Icons on your handset display

- Base/Handset link
- Landline call in progress
- Battery full; 2/3 full; 1/3 full; Empty, please charge.
- Loudspeaker on
- Alarm clock on
- Ringer off
- OK/Confirmation of selection
- CID/New missed call
- Message Waiting Indicator
- SKYPE call in progress
- Digits/characters on the right
- Up
- Down
- BACK/Erases digit on the left

Explore the menus

Your phone offers a variety of functions and features that are grouped in the menus.

MAIN MENU

SKYPE

Contacts
User Status
Voicemail
Credits

Phonebook

Private
View
Add
Edit
Quick Dial
To Shared
Delete
Delete All
Status

Shared

View
Add
Edit
To Private
Delete
Delete All
Status

Clock/Alarm

Set Clock
Set Alarm
Alarm Tone

Personal Set

Handset Tone
Handset Name
Contrast
Auto Answer
Backlit
Language

Advanced Set

Recall Time
Dial Mode
Pause
PABX
Baby Call
Registration
Base Select
Delete HS
Change PIN
Reset
Country

CALL RECORDS MENU

Missed

To Shared
To Private
Delete
Delete All

Received

To Shared
To Private
Delete
Delete All

Dialled

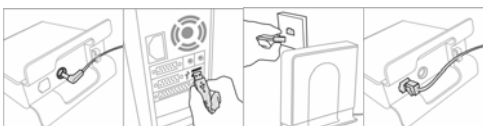
To Shared
To Private
Delete
Delete All

In menu mode, press **Off/Exit** anytime or place your phone in the charger for charging to exit the menu and return to standby. Any unconfirmed changes will not be saved.

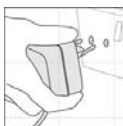
3 Setting up your phone

Setting up the handset(s) and the base

1. Connect the included power adapter to the power port of the base station. Then plug the power adapter into the electrical outlet.
2. Connect the USB plug directly to your PC's USB slot.
3. Connect the telephone line cord to the phone socket on the back of the base unit and to the wall phone socket.



4. Each handset comes with a charger and a charger adapter. Connect the charger adapter to the electrical outlet.



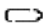
5. Insert the 2 rechargeable NiMH AAA batteries (included), observing their polarities, into the battery compartment on the handset.
6. Slide the battery door firmly into place.



7. Place the handset on the charger and let the batteries continuously charge for 14 hours before using. The handset may get warm during the initial charge. This is normal.
8. Please note that handset may not turn ON for up to 15 minutes if the batteries are low.



CHARGING THE HANDSET

An empty battery icon  indicates the batteries need recharging. Place the handset on the charger to recharge the batteries. A handset reaching a very low battery voltage level will go into sleep mode, displaying LOW BATT on the screen.

Get into the habit of putting the handset on the charger to charge when it is not in use to ensure the handset is always fully charged.

SWITCH ON/OFF YOUR HANDSET

To switch off the your phone, press and hold **Off/Exit** while the phone is on.
To switch on the power of your phone, press and hold **Off/Exit** or return the handset to the charger; the handset should be automatically turned on.

Setting up your PC

SYSTEM REQUIREMENT

In order to use the phone, your computer should meet the following requirements:

- PC running Windows 2000 or XP
- 400 MHz processor
- 128 MB RAM
- Free USB slot on the PC
- Internet Connection (Broadband recommend)

Setting up your phone

To ensure your phone working properly with your PC without disturbing your daily PC application, please follow the instruction in the following order.

Step 1: Getting your PC ready.

Before making your first SKYPE call, you have to install SKYPE and the USB driver provided in the enclosed CD to your PC.

1. Insert the installation CD into the PC's CD ROM (or DVDROM) drive.
2. The installation program will start automatically.
3. Follow the instructions on the screen.
4. Click on **QUIT** when finished installation.
5. Remove the installation CD from the PC's CD ROM (or DVDROM) drive.

TIP: If the installation does not start automatically:

- Click on Windows **START** and then select **Run**.
- Enter **Explorer** and navigate to the CD ROM (or DVDROM) drive.
- Double-Click on **SetupWizard.exe**

Note:

- If your operating system is Windows 2000, you need to restart your PC to complete the setup.
- The USB driver should start automatically if this option is checked during installation.

Step 2: Adjust your audio system

In order to make sure your original audio setting is not affected, please follow the steps below:

For Windows 2000 user,

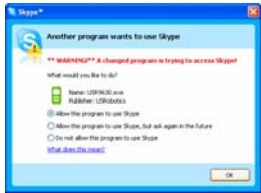
1. With the base powered up and USB plug inserted into the USB slot on your PC, click the **Start** button and select CONTROL PANEL.
2. Click on *Sound and Multimedia*.
3. Select audio Tab from *Sound and Multimedia Properties*.
4. Check if your current speaker is selected in both *Sound Playback/Sound Recording* pull down box.
5. Check *Use only preferred devices* checkbox.
6. Press **APPLY** or **OK** to save your settings.

For Windows XP user,

1. With the base powered up and the USB plug inserted into the USB slot on your PC, click the **Start** button and select CONTROL PANEL.
2. Click on *Sound and Audio devices*.
3. Select audio Tab from *Sound and Audio Devices*.
4. Check if your current speaker is selected in both *Sound Playback/Sound Recording* pull down box.
5. Check *Use only default devices* checkbox.
6. Press **APPLY** or **OK** to save your settings.

Step 3: Connect your phone to the PC

1. Make sure your USB base plug is inserted to your computer's USB slot.
2. Start SKYPE and login to your SKYPE account if you have not already done so.
3. Start the USB driver by double clicking on the shortcut icon created on your desktop if it is not already started.
4. If this is the first time you starts the USB driver, you will be asked to authorize the USB driver to access your SKYPE (see picture below). Simply select **Allow this program to use SKYPE** and press **OK**.



- Once both SKYPE and the base are detected, your phone is ready for use. Your current SKYPE online status should be shown on the phone's display.

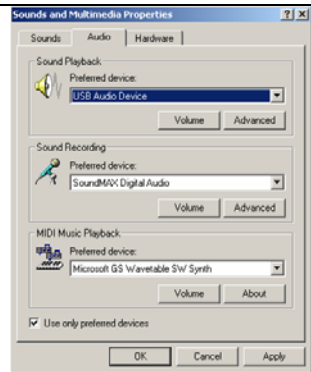
About the USB Driver

Once the USB driver is installed on your PC, it should auto start when you start the PC; a tray icon will be shown when the USB driver is loaded. Double click on the tray icon will return the ABOUT page of the USB driver, where the current status will be shown. If there are problems with the connection, an error message regarding the problem will be displayed; otherwise CONNECTED will be shown. You do not have to restart the USB driver unless it was exited. To exit the USB driver, right click on the tray icon and select EXIT.

Adjusting the speaker volume on your PC

The speaker volume setting might affect the sound quality of your phone.

Please follow the steps below to adjust your speaker volume.

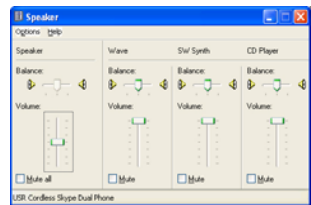


For Windows XP user,

- Click on the Windows **START** and then select **Control Panel**.
- Click on **Sounds, Speech, and Audio Devices**, and then click on **Sound and Audio Devices**.
- Click on the **Audio** tab. From **Sound Playback** pull down box, select **USR Cordless Skype Dual Phone**.
- Click on the **Apply** key at the bottom; then click on the **Volume** key.
- Adjust the volume using the slider. Close the slider window when finished.
- Return to the **Sound Playback** pull down box, select your original sound device and click **OK** to save and exit.

For Windows 2000 user,

- Click on the Windows **START** and then select **Settings > Control Panel**.
- Double click on **Sounds and Multimedia**.
- Click on the **Audio** tab. From **Sound Playback** pull down box, select **USB Audio Device**.
- Click on the **Apply** key at the bottom; then click on the **Volume** key.
- Adjust the volume using the slider. Close the window when finished.
- Return to **Sound Playback** pull down box; select your original sound device and click **OK** to save and exit.



Configuring your SKYPE Phone

For phones with single country and language setting, you can skip this section.

For phones with multiple countries support,

After powering up the phone, your phone welcomes you with an animated screen displaying a welcome message in different languages that your phone offers.

- When the handset has established a link with the base, press any key on the handset.
- Select the desired country and press the **OK**.

Note: If you bought your product in any of the above countries but want to use it in another one, you can select the country in the menu to activate the right country settings. Nevertheless, you have to change the telephone line cord and adapter according to the country in which you want to use it.

Registering your handset

You will need to register your handset if it shows UNREGISTERED in the display after you followed the configuration steps above or if you wish to de-registered from its original base and register the handset to a different base unit.

To register your handset:

- Press **MENU**.
- Select **ADVANCED SET** and press **OK**. If your handset's current status is UNREGISTERED, you will be taken directly to the next step.
- Select **REGISTRATION** and press **OK**.
- Before you enter the PIN, press and hold **PAGING** key on the base for 4 seconds. The base is now in the registration mode and both LEDs on the base will be blinking. (If the base is full and cannot take on any more handset, you will not be able to register. See Section 9 Deleting a handset – to delete a currently registered handset.)
- Enter the PIN on the handset and press **OK**.

During the registration period, you will see SEARCH BASE on the handset.

You will hear a confirmation tone if the registration is successful. The handset label, the handset number, and the clock will be displayed. The status icon will be shown as well if PC is setup properly and connected with the base. If the registration is not successful, the previously unregistered handset will display UNREGISTERED again. If the handset is previously registered to another base, the handset will connect back to its original base. Follow the procedure above and try again.

Set your handset's clock

Once the base is powered up and connected to the PC and the USB driver is running, your handset will obtain the current time from the PC.

However, you can still adjust the clock manually.

To adjust your clock:

- Press **MENU** during standby.
- Press **Up** or **Down** to select **CLOCK/ALARM**, and then press **OK**.
- Press **Up** or **Down** to select **SET CLOCK**, and then press **OK**.
- Use numeric keys to enter the time for the clock in 24 hours format.
- Press **OK** to confirm.

4 Making Calls


General Information

Before any call is made, please note the following.

Emergency Calls

SKYPE does not support emergency call; all emergency calls will be routed to the landline.

Out of range warning

If you move too far away from the base unit during a call, your phone will sound an alert tone, and  will flash. You need to move closer to the base unit or your call will be disconnected. If the handset cannot find the base in 30 minutes, it will automatically turn itself off and user will have to manually turn it on again.

Low battery warning

If your phone is almost out of battery during a call, it will sound an alert tone. Place your phone on the charger for charging as soon as possible or it would turn off when it is out of battery. Placing the phone on the charger for charging will end the current call.

Call timer

The call timer shows the duration of your current call on display. It is shown in minutes and seconds (MM-SS) in the first hour. After that, it will be shown in hours and minutes (HH-MM).

Call another SKYPE user on your contact list

1. Press **SKYPE**.
2. Press **UP** and **DOWN** to select the SKYPE user you would like to call.
3. Press **TALK** or **SKYPE** to call the selected contact. The selected contact's name will be displayed and called.

Contact List

The contact list shows the SKYPE contact list of the user who is currently login to SKYPE on the PC. The icon on the left of each entry indicates the online status of the contact.

Changing user status

You can also change your online status on the handset. Refer to section 7 for instruction on how to change online status.

Search by letter

Using the keypad, enter the first letter of the name you wish to find. For example, to find "Sam", press 7 four times, the first contact begins with the letter S will be selected.

View contact's SKYPE ID

The full name of the contacts on the contact list will be shown. If you want to view the contact's SKYPE ID, press **MENU** when the contact is selected. If a SKYPEOUT entry is selected, the number of the entry will be shown.

Calling a landline number with SKYPEOUT

1. Press **SKYPE**.
2. Press **UP** and **DOWN** to select the SKYPEOUT number to call.
3. Press **TALK** or **SKYPE** to call the selected contact. The selected number will be displayed and called.

Or,

1. Enter the number to call
2. Press **SKYPE** to call the dialled number.

SKYPEOUT

In order to make SKYPEOUT calls, you need to purchase SKYPEOUT credits; please go to <http://www.skype.com/store/buy/skypeout.html> for further details.

When making SKYPEOUT calls, it is necessary to dial 00, 011 or + as a prefix of the phone number you are calling. For example, when making calls within North America: 00-1-905-5251258 or 011-1-905-3456622 when making international calls: 00-852-25447555 or +852-90446577

Entering a +

Simply press and hold the 0 key for 1 second during standby.

Deleting digits

Press **BACK** to delete an incorrect digit. Press and hold **BACK** for two seconds or **EXIT** to return to standby mode.

Entering a pause

Press and hold # where you want to enter a pause.

Calling a number thru the landline

1. Enter the number you want to call. The number will appear on the display. You can enter up to 20 digits.
2. Press **TALK** to dial the number.

Or,


1. Press **TALK** to obtain the line; a dial tone should be heard if the landline is not in use.
2. Enter the number to dial.

Redialling

Your phone records the last 10 numbers/contacts you have called. The first 32 digits/characters of each number/contact are stored.

To redial one of the last 10 dialled number/contact,

1. Press the **REDIAL** key. The most recently dialled number appears.
2. Press the **UP/DOWN** key to choose the number you want to dial.
3. Press the **TALK** key.

Note: **BACK**  turns on when the number is phonebook record with a name and number. Press **OK** to toggle the name and number.

Off-hook redialling


With off-hook redialling, you can redial the last number dialled.

1. Press the **TALK** key.
2. Press the **REDIAL** key. The most recently dialled number will appear and dialled.

Phonebook dialling

You can dial a number stored in the phonebook.

1. Press the **PHONEBOOK** key to enter phonebook.
2. Press the **UP/DOWN** key to search for the record that you would like to dial or you can use the number keys to jump directly to the record starting with the corresponding letters of that key.
3. Press the **TALK** key.

Note: If the number is more than 12 digits, press the  key to view off screen digits, and press the **BACK** key to view the first 12 digits again.

Quick dialling

You can assign frequently dialled number from the phonebook to keys on the handset. Once assigned, press and hold the key on the handset during standby will dial the stored number. The number will be dialled using your landline.

For information on how to set quick dial numbers, refer to Section 5 - Assign a quick dial key.

3-way SKYPE conferencing


You can start a 3-way SKYPE conference call.


1. Call the first SKYPE party.
2. After the first party answered the call, press **TALK** to seize the line and make a SKYPE call to the second party.
3. When the second party answered the call, press and hold the **CONFERENCE** key to join the two parties.

Ending a call

1. Press **Off/Exit** or place the phone on the charger will end the call and return the phone to standby.

Answering a call

When you receive a call, if the incoming call is from the SKYPE line, the SKYPE melody will ring and  will flash in the display.


if the incoming call is from the landline, the landline melody will ring and  will flash in the display.

1. Press **Talk** to answer the call.

Caller id

If the incoming call is a SKYPE call, the caller's full name or SKYPE name will be shown on the display. If the incoming call is a PSTN call, you have to subscribe to the caller ID service from your local service provider to use this feature.

Turning off the ringer

Press and hold the Pound (#) key when the phone is in standby to turn off the ringer for all the calls.  appears when the ringer is turned off. (Press and hold **Pound** again to turn on the ringer.)

Recall

While on a call, you can use the recall function to make a second outgoing call or receive a second incoming call.

Second Calls

If you are using SKYPE, you will be able to make or receive second calls without extra charges. However if you are using landline, you have to subscribe to the call waiting service from your local service provider to use this feature.

Second outgoing call

You can only make second outgoing call via the line your current call is on. If you are currently on SKYPE call, you can make a second call to a contact on your SKYPE list or a SKYPEOUT call; if you are currently on landline call, you can make a second call to another landline number

Second incoming call from the other line

You will be able to receive second incoming call from the other line (i.e. receive a landline call while on a SKYPE call). A special call waiting tone will be heard and the caller ID will be shown on the display. To pick up the call on the other line, press **Off/Exit** to end the current call and press **TALK** again.

To make a second outgoing call while on a SKYPE call,

1. While on the first call, press **R/Talk**. A dial tone should be heard; the first call will be put on hold.
2. To call a SKYPE contact, press **SKYPE** to obtain the contact list; select the contact to call and press **R/Talk**.
3. To make a SKYPEOUT call, enter the number to call.
4. To return to the first call or to toggle between calls, press **R/Talk**.

To make a second outgoing call while on a landline call,

1. While on the first call, press **R/Talk**. A dial tone should be heard; the first call will be put on hold.
2. Enter the number to call
3. To toggle between the two landline calls, press **R/Talk**.

To receive a second incoming call,

1. When there is a second incoming call, a call-waiting alert will be heard; if the second incoming call is from the other line, a special call-waiting alert will be heard.
2. If the second incoming call is from the other line, press **OFF** to terminate the current call first.
3. Press **R/Talk** to pick up the second call.
4. Press **R/Talk** again to return to the first call, or to toggle between the two calls if both calls are on the same line.

Chaining Dialling

You can dial out numbers from the phonebook even after you have seized the phone line. And there is no limit to the number of times chain dialling is accessed.

1. Press and hold the **PHONEBOOK** key for 2 seconds.
2. Press the **UP** or **DOWN** key to scroll through the phonebook records or you can use the number keys to jump directly to the record starting with the corresponding letters of that key.

Note: If you decide to quit using chain dialling, simply press and hold the **PHONEBOOK** key for 2 seconds again to exit.

3. Press the **OK** key.

Handsfree calls


Handsfree provides the convenience of talking to the caller without holding onto the phone. You can communicate by using a headset or the speaker/microphone of the phone. Handsfree also allows others in the room to be involved in the conversation if you are not using the headset.

If you want to use the headset,

1. Plug in the headset to the headset jack at the side of your phone. You can hear the caller from the earpiece of the headset, and you can speak via the headset's microphone. A headset using a 2.5mm plug can be used.
2. Unplug the headset to end handsfree.

If you want to use the phone's speaker, during a call,

1. Press the **SPEAKER** key.

You can hear the caller over the loudspeaker and you can speak via the microphone.  will appear on the display.

2. Repeat step 1 to switch off the speaker.

Adjusting the volume of the caller's voice

You can increase or decrease the volume of a caller's voice during a call. There are 5 volume levels for selection.

To adjust the volume, during a call:

1. While the phone is off hook (i.e. dial tone is heard), press **UP** or **DOWN**. The display shows the current volume level. Press **UP** or **DOWN** again to adjust the volume.

Still can't find the most comfortable level?

Besides adjusting the volume on the handset, you might also need to adjust the volume on your PC in order to set the speaker to the most comfortable volume. Please refer to section 2 – *Adjusting the speaker volume on your PC* for information on how to adjust the volume on the PC.

Speak to someone privately when you are on a call

During a call, if you wish to speak to someone privately without having the caller hear your conversation,

1. Press **MUTE**; the caller cannot hear you, but you can hear the caller.
2. Press **MUTE** again to communicate with your caller again.

5 Using your phonebook

You can use your phonebook to manage your phone entries. Your phone has a private phonebook and a shared phonebook. The information in your private phonebook is stored in your handset; therefore, if you have more than one handset, each handset has its own phonebook.

The information in your shared phonebook is stored in the base unit; therefore, the information can be shared by all the handsets. Your phone must have a link with the base unit in order to use the shared phonebook.

Your private phonebook can store 50 records, and your shared phonebook can store 10 records. Each record can store a name with up to 10 characters and a number with up to 20 digits.

Viewing the phonebook records

1. Press **PHONEBOOK**.
2. Press **UP** or **DOWN** to select the phonebook you wish to open, PRIVATE or SHARED. Press **OK** to confirm.
3. Press **UP** or **DOWN** to view the previous/next record.

To store a name and number

Each record can store a name up to 10 characters and a number up to 20 digits.

To add an entry to your phonebook,

1. Press **MENU**, select PHONEBOOK and press **OK**.
2. Select the phonebook to open, PRIVATE or SHARED and press **OK**.
3. Press **UP** or **DOWN** to select ADD, and then press **OK**.

Storing Entries

Please note that contacts on the SKYPE contact list cannot be stored to the phonebook (both shared and private).

Memory full

If your phonebook is full, FULL is displayed. You have to delete some records before entering new ones.

4. Enter the name for the record. A name must be entered and it must be unique. Press **OK** to continue.
5. Enter the number for the record. You must enter a number.

Entering a pause

Press and hold # where you want to enter a pause.

Entering a +

Press and hold 0 where you want to enter a +.

Duplicate name

If you entered an identical name for two different records in your phonebook, DUPLICATE REPLACE? will display. Press **OK** to replace the existing record with the new entry or press **BACK** to return to the previous display and make changes to the name.

Managing your numbers

You can edit, copy, assign quick dialling, delete records, delete all records, and check memory status while browsing your phonebook.

EDIT YOUR ENTRIES

1. Press **MENU**; select PHONEBOOK and press **OK**.
2. Press **UP** or **DOWN** to select the phonebook you want to open, PRIVATE or SHARED; press **OK** to continue.
3. Press **UP** or **DOWN** to select EDIT, and then press **OK**.
4. Press **UP** or **DOWN** to scroll to the entries you wish to edit or search by letter, then press **OK**.
5. Edit the name and number using the keypad. Press **BACK** to erase a character or digit.
6. Press **OK** to save your changes.

COPY YOUR ENTRIES

Information of the entries can be shared by copying the entries from the private phonebook to the shared phonebook and vice versa.

1. Press **MENU**; select PHONEBOOK and press **OK**.
2. Press **UP** or **DOWN** to select the phonebook you want to open, PRIVATE or SHARED; press **OK** to continue.
3. Press **UP** or **DOWN** to select TO SHARED or TO PRIVATE, and then press **OK**.
4. Press **UP** or **DOWN** to scroll to or search by letter the entries you wish to copy to the other phonebook, then press **OK**.
5. Press **OK** to save your changes.

QUICK DIAL TO ENTRIES IN YOUR PRIVATE PHONEBOOK

This feature allows you to dial to the entries in your private phonebook by pressing and holding a quick dial key that you have assigned. You can assign 9 quick dial keys (keys 1-9).

NOTE: Contacts on the contact list cannot be assigned to quick dial keys.

ASSIGN A QUICK DIAL KEY

1. Press **MENU**; select PHONEBOOK and press **OK**.
2. Press **UP** or **DOWN** to select the PRIVATE phonebook; press **OK** to continue.
3. Press **UP** or **DOWN** to select QUICK DIAL, and then press **OK**.
4. Press **UP** or **DOWN** to select the key to assign a number to; then press **OK**.
5. Press **UP** or **DOWN** to select the record to assign to the key selected in the previous step; then press **OK** to save your changes.

CHANGE A QUICK DIAL KEY

1. Press **MENU**; select PHONEBOOK and press **OK**.
2. Press **UP** or **DOWN** to select the PRIVATE phonebook, and then press **OK**.
3. Press **UP** or **DOWN** to select QUICK DIAL, and then press **OK**. The first quick dial key is displayed.
4. Press **OK**. Press **UP** or **DOWN** to select EDIT. Press **OK**.
5. Press **UP** or **DOWN** to select a new entry for the selected key. Press **OK** when the entry is selected.

DELETE A QUICK DIAL KEY

1. Press **MENU**; select PHONEBOOK and press **OK**.
2. Press **UP** or **DOWN** to select the PRIVATE phonebook, and then press **OK**.
3. Press **UP** or **DOWN** to select QUICK DIAL, and then press **OK**. The first quick dial key is displayed.
4. Press **UP** or **DOWN** to scroll to the quick dial key you wish to delete.
5. Press **OK**. Press **UP** or **DOWN** to select DELETE. Press **OK**.
6. CONFIRM? is displayed. Press **OK** to confirm.

DELETE AN ENTRY FROM YOUR PHONEBOOK

1. Press **MENU**; select PHONEBOOK and press **OK**.
2. Press **UP** or **DOWN** to select the phonebook you want to open, PRIVATE or SHARED; press **OK** to continue.
3. Press **UP** or **DOWN** to select DELETE, and then press **OK**.
4. Press **UP** or **DOWN** to select the record to delete; then press **OK**.
5. Press **OK** to confirm your change.

DELETE ALL ENTRIES IN YOUR PHONEBOOK

1. Press **MENU**; select PHONEBOOK and press **OK**.
2. Press **UP** or **DOWN** to select the phonebook you want to open, PRIVATE or SHARED; press **OK** to continue.
3. Press **UP** or **DOWN** to select DELETE ALL, and then press **OK**.
4. Press **UP** or **DOWN** to select the record to delete; then press **OK**.
5. CONFIRM? is displayed. Press **OK** to confirm.

How much space is still available in my phonebook?

Your phone keeps track of how many memory slots you have used and how many are still available in your phonebook.

1. Press **MENU**; select PHONEBOOK and press **OK**.
2. Press **UP** or **DOWN** to select the phonebook you want to open, PRIVATE or SHARED. Press **OK**.
3. Press **UP** or **DOWN** to select STATUS. Press **OK** to view the status. Press **OK** when finished.

6 Call Records

Finding out who called you (Call List)

Your phone keeps a record each time you make, receive or miss a call. You can access a list of the last 15 calls that you have missed and the last 5 calls you have received. Each record stores a name up to 12 characters and a number/contact up to 32 alphanumeric characters.

If you have subscribed to caller ID service from your local Telephone service provider, both landline and SKYPE calls will be automatically stored; otherwise only SKYPE calls will be stored.

If you have more than one handset, each handset has its own call list.

Order of display

If the caller's name is available, the first 12 characters will be displayed with the date and time the call received. If the name is not available, the first 12 alphanumeric characters of the caller's number will be displayed with the date and time.

Matching your phonebook record

If the caller's number matches a phone number stored in the phonebook, that phonebook name will be displayed instead of the CID name.

CHECK YOUR CALL RECORDS

1. Press the **CID** key. Press **UP** or **DOWN** to select MISSED or RECEIVED call list. Then press **OK**.
2. Press **UP** or **DOWN** to browse the call records.
3. Press **▶** to view the number.

While viewing the call records.....

If the record is a SKYPE call records (i.e. it is a missed/received SKYPE/SKYPEOUT call), an icon **S** will be shown. If the record is a new record, a * will be shown.

CALLING BACK FROM A CALL RECORD

When you are viewing a call record, you can return the call by pressing the **TALK** key. If the call comes in from the landline line, the return call will be made using the landline line; if the call comes in from SKYPE, SKYPE call will be made.

SAVING THE CALL RECORDS TO YOUR PHONEBOOK

To save the phone number of your family, friends, and colleagues, you can save the call records to your phonebook if you do not already have their contact information.

While you are viewing the call record that you would like to save,

1. Press **MENU**.
2. To save it to your private phonebook, select TO PRIVATE; to save it to your shared phonebook, select TO SHARED. Press **OK**.
3. Enter a name for this entry; press **OK** when finished.
4. Edit the number if necessary; press **OK**.
5. Your record will be saved in the selected phonebook.

Note: SKYPE contacts or SKYPEOUT numbers cannot be saved to the phonebook.

Note: The call record is now saved into the phonebook. The call record is still in your call list but it will show the new name entered.

DELETE A CALL RECORDS ENTRY

You can delete each individual call records one at a time. To delete a record:

1. While viewing the call record, press **MENU**.
2. Press **UP** or **DOWN** to select DELETE.
3. Press **OK**.
4. CONFIRM? is displayed. Press **OK** to confirm.

DELETE ALL CALL RECORDS

You can delete all the call records lists at once. To delete all call records list:

1. While viewing the call record, press **MENU**.
2. Press **UP** or **DOWN** to select DELETE ALL. Press **OK**.
3. CONFIRM? is displayed. Press **OK** to confirm.

Finding out who you have called (Dialled List)

Your phone stores the last 10 numbers/contacts you have dialled, up to 32 alphanumeric characters each. If you have more than one handset, each handset has its own dial list.

CHECKING YOUR DIALLED RECORDS

1. Press the **REDIAL** key, the last number/contact dialled is displayed.
2. Press the **UP/DOWN** key to scroll through the last 10 dialled numbers.

SAVING THE DIAL RECORDS TO YOUR PHONEBOOK

While you are viewing a dial record that you would like to save.

1. Press **MENU**.
2. To save the record to the private phonebook, select TO PRIVATE; to save the record to the shared phonebook, select TO SHARED. Press **OK**.
3. Enter a name for this record. Press **OK**.
4. Edit the number if necessary. Press **OK** to save.

Matching your phonebook record

If a dialled number matches a phone number stored in the phonebook, that phonebook name will be displayed instead of the dialled number.

Note: The record is now saved into the phonebook. The dial record is still in your dial list but it will show the new name entered.

DELETING A DIAL RECORD

While you are viewing a dial record that you would like to delete,

1. Press the **MENU** key.
2. Select DELETE and press the **OK** key.
3. Press the **OK** key to confirm.

DELETING THE ENTIRE DIAL LIST

Instead of deleting the records one by one, you have this option to delete the entire dial list.

While you are viewing any dial record,

1. Press the **MENU** key.
2. Select DELETE ALL and press the **OK** key.
3. Press the **OK** key to confirm.

7 SKYPE Features

Your phone has other SKYPE features.







Changing your online status

You can change your current SKYPE status on the handset. To change your online status:

1. Press **MENU**.
2. Select SKYPE and press **OK**.
3. Select USER STATUS and press **OK**.
4. Select the status to change into and press **OK** to save the status.

SKYPE Status icons

SKYPE status icons are used on the handset to represent different online status as well as each contact's online status on the SKYPE contact list. Please refer to the following table for the description of each status.

	Online / SKYPE ME
	Offline
	Away
	Not Available
	Not Disturb
	SKYPEOUT entry



Voicemail

Your phone allows you to access your SKYPE voicemail box with just a few presses.

SKYPEVOICEMAIL

To get a voicemail account, please go to <http://www.skype.com/products/skypevoicemail/> for further details.

You have new Voicemail

When there are new voicemails waiting for you, the  will appear on the top line of the display during standby. The  icon will be gone when there is no more new message in your voicemail box.

RETRIEVING VOICEMAIL

1. Press **MENU**.
2. Press **Up** or **Down** to select SKYPE. Press **OK**.
3. Press **Up** or **Down** to select VOICEMAIL. Press **OK**.
4. Press **Up** or **Down** to select the voicemail to listen to. Press **MENU**.
5. Press **UP** or **DOWN** and select PLAY to play the message.

Which messages are new messages?

While you are browsing the voicemail list, an asterisk (*) is used on the second line to indicate that the voicemail is new.

DELETING VOICEMAIL

1. Press **MENU**.
2. Press **Up** or **Down** to select SKYPE. Press **OK**.
3. Press **Up** or **Down** to select VOICEMAIL. Press **OK**.
4. Press **Up** or **Down** to select the voicemail to delete. Press **MENU**.
5. Press **Up** or **Down** again to select DELETE, press **OK** to confirm.

DELETING ALL VOICEMAIL

1. Press **MENU**.
2. Press **Up** or **Down** to select SKYPE. Press **OK**.
3. Press **Up** or **Down** to select VOICEMAIL. Press **OK**.
4. Press **MENU** to enter the voicemail menu.

5. Press **Up** or **Down** to select DELETE ALL. Press **OK**.
6. A confirmation prompt should be shown; press **OK**.

Check your SKYPE credits

You can also check your SKYPEOUT account credits before you make a SKYPEOUT call.

To check your SKYPEOUT credits,

1. Press **MENU**.
2. Press **UP** or **DOWN** to select SKYPE. Press **OK**.
3. Press **UP** or **DOWN** to select CREDITS. Press **OK**. The current amount available for SKYPEOUT will be shown in EUR.
4. Press **OK** when finish.

8 Personalizing your phone

Your phone comes with a selection of settings that you can change to personalize the phone the way you like it to work.

Personalizing your phone will be done in the various menu items. At any time you can press the **BACK** key to exit the current menu or cancel the confirmation. If you press the **EXIT** key, the phone will simply abort all programming and return to standby.

Personalizing your phone's display

GIVE YOUR PHONE A NAME

You can give your phone a different name. If you have more than one handset, you can give each handset its own name.

The handset name can be up to 10 characters long and it can be composed of A-Z, 0-9, and space.

1. Press the **MENU** key.
2. Select PERSONAL SET and press the **OK** key.
3. Select HANDSET NAME and press the **OK** key. The current handset name is displayed.
4. Edit the handset name.
5. Press the **OK** key to confirm.

ADJUSTING THE CONTRAST

The display contrast can be adjusted via the handset's menu.

1. Press the **MENU** key.
2. Select PERSONAL SET and press the **OK** key.
3. Select CONTRAST and press the **OK** key. The current CONTRAST level is displayed.
4. Press UP or DOWN to adjust the display to the desired contrast level.
5. Press the **OK** key to confirm.

AUTO ANSWER

Auto answer gives you the convenience of answering a call by just picking up the phone from the charger. You do not need to press the **TALK** key.

1. Press the **MENU** key.
2. Select PERSONAL SET and press the **OK** key.
3. Select AUTO ANSWER and press the **OK** key. The current setting is displayed.
4. Select ON or OFF.
5. Press the **OK** key to confirm.

TURNING THE BACKLIT ON/OFF

The display and keypad will be lit when the phone is being used.

1. Press the **MENU** key.
2. Select PERSONAL SET and press the **OK** key.
3. Select BACKLIT and press the **OK** key. The current BACKLIT is displayed.
4. Select ON or OFF.
5. Press the **OK** key to confirm.

SETTING YOUR PHONE'S LANGUAGE

Your phone comes with several languages. When you change your phone's language, the menus will be displayed in the chosen language.

1. Press the **MENU** key.
2. Select PERSONAL SET and press the **OK** key.
3. Select LANGUAGE and press the **OK** key. The current LANGUAGE is displayed.
4. Select the desired language.
5. Press the **OK** key to confirm.

Personalizing your sounds

You can assign different ringing melodies for each handset at different volume levels. You can select a different ringtone for SKYPE, landline and intercom calls.



SELECTING YOUR HANDSET'S RINGING MELODY

1. Press the **MENU** key.
2. Select PERSONAL SET and press the **OK** key.
3. Select HANDSET TONE and press the **OK** key.
4. Select the line to select ringtone for and press **OK** key.
5. Select the desired ringtone.
6. Press the **OK** key to confirm.

SELECTING YOUR HANDSET'S RINGING VOLUME

1. Press the **MENU** key.
2. Select PERSONAL SET and press the **OK** key.
3. Select HANDSET TONE and press the **OK** key.
4. Select VOLUME and press **OK** key.
5. Press **UP** or **DOWN** to select the volume level.
6. Press the **OK** key to confirm.

Turning off your handset's ringer

Press and hold the  key to turn off the ringer.  appears to indicate that the ringer is turned off. Ringer does not emit any sound to indicate an incoming call.

TURING THE KEY BEEP ON/OFF

1. Press the **MENU** key.
2. Select PERSONAL SET and press the **OK** key.
3. Select HANDSET TONE and press the **OK** key.
4. Select KEYBEEP and press **OK** key. The current setting is displayed.
5. Select ON or OFF.
6. Press the **OK** key to confirm.



Extra Features

Setting the time

The time is displayed during standby mode

SETTING YOUR HANDSET'S TIME

1. Press the **MENU** key.
2. Select CLOCK/ALARM and press the **OK** key.
3. Select SET CLOCK and press the **OK** key. The current setting is displayed.
4. Edit the time using the digit keys.
5. Press the **OK** key to confirm.

Setting the alarm clock

You can set the alarm time and personalize the alarm tone.

SETTING YOUR ALARM TIME

1. Press the **MENU** key.
2. Select CLOCK/ALARM and press the **OK** key.
3. Select SET ALARM and press the **OK** key. The current setting is displayed.
4. Select **ON** or **OFF** and press the **OK** key. If you selected ON, continue to step 5.
5. Enter the alarm time using the digit keys.
6. Press the **OK** key to confirm.

When the alarm clock goes off,

The handset will ring for 1 minute. Press the **OFF** key to turn off the alarm clock.

SELECTING YOUR ALARM CLOCK'S RINGING MELODY

1. Press the **MENU** key.
2. Select CLOCK/ALARM and press the **OK** key.
3. Select ALARM TONE and press the **OK** key.
4. Select MELODY and press the **OK** key. The current setting is displayed.
5. Select the desired melody.
6. Press the **OK** key to confirm.

SETTING YOUR ALARM VOLUME

1. Press the **MENU** key.
2. Select CLOCK/ALARM and press the **OK** key.
3. Select ALARM TONE and press the **OK** key.
4. Select VOLUME and press the **OK** key. The current setting is displayed.
5. Select the desired volume level.
6. Press the **OK** key to confirm.

10 Advanced features

Note: Your handset must have a link with the base unit in order to use any advanced features mentioned in this section.

Recall

Your phone comes with different flash durations. Check with your local service provider if you are not sure which duration to use.

1. Press the **MENU** key.
2. Select **ADVANCED SET** and press the **OK** key.
3. Select **RECALL TIME** and press the **OK** key. The current setting is displayed.
4. Select the desired flash durations.
5. Press the **OK** key to confirm.

Dial mode

[This section is applicable to models with the DIAL MODE option only.]

Your phone is set to tone dialling. You can switch to pulse dialling if necessary.

1. Press the **MENU** key.
2. Select **ADVANCED SET** and press the **OK** key.
3. Select **DIAL MODE** and press the **OK** key. The current setting is displayed.
4. Select **TONE** or **PULSE**.
5. Press the **OK** key to confirm.

Temporary tone dialling in pulse dial mode

If the dialling mode is set to pulse, you can press and hold the **STAR** key to set temporary tone dialling. **D** will be displayed on the screen. All the following digits will be dialled as tones until you hang up.

Pause

1. Press the **MENU** key.
2. Select **ADVANCED SET** and press the **OK** key.
3. Select **PAUSE** and press the **OK** key. The selected pause duration is displayed.
4. Press **UP** and **DOWN** to select the Pause duration.
5. Press the **OK** key to confirm.

PABX

1. Press the **MENU** key.
2. Select **ADVANCED SET** and press the **OK** key.
3. Select **PABX** and press the **OK** key. The current PABX number (if available) will display.
4. Enter the PABX number to enable this feature. To disable PABX, clear the number.
5. Press the **OK** key to confirm.

Baby call

Baby call allows you to dial out a programmed number by pressing any key on the handset (except the **OFF** key).

1. Press the **MENU** key.
2. Select **ADVANCED SET** and press the **OK** key.
3. Select **BABY CALL** and press the **OK** key. The current setting is displayed.
4. Select **ON** and press the **OK** key.
5. Enter or edit the number.
6. Press the **OK** key to confirm. **BABY CALL** is displayed when you return to standby mode.

To turn off baby call,

1. Press the **OFF** key.
2. Select **OFF** and press the **OK** key.

VMWI

You can clear the Voicemail waiting indicator before retrieving all the new voicemail messages. Please note that this will not clear the voicemail message waiting indicator for Skype voicemail messages.

1. Press the **MENU** key.
2. Select **ADVANCED SET** and press the **OK** key.
3. Select **VMWI** and press the **OK** key.
4. The prompt "DELETE?" will be shown.
5. Press the **OK** key to confirm.

Registering a handset

Each base can register up to 4 handsets. Each handset can register up to 4 bases.

1. Press the **MENU** key.
2. Select **ADVANCED SET** and press the **OK** key.
3. Select **REGISTRATION** and press the **OK** key.
4. Before you enter the PIN, press and hold the **PAGING** key on the base for 4 seconds.

The base is full

You can register up to 4 handsets to the same base. After registering 4 handsets to the same base, your base is full. If you want to register an additional handset, you have to un-register one of the handset. See *Un-registering a handset* for more detail.

5. Enter the PIN and press the **OK** key.

Successful registration

You will hear a confirmation tone if the registration is successful. The handset label, the handset number, and the clock will be displayed.

Unsuccessful registration

If the registration is not successful, the handset registers back to its original base unit, or **SEARCHING** is displayed if it has lost link with its original base, or **UNREGISTER** is displayed if it is registering for the first time. Follow the procedure and try again.

Selecting a Base

If your handset is registered to more than 1 base, you can select which base the handset will use.

1. Press the **MENU** key.
2. Select **ADVANCED SET** and press the **OK** key.
3. Select **BASE SELECT** and press the **OK** key.
4. Select the base to use and press the **OK** key.

Un-registering a handset

A handset can un-register another handset registered to the same base. It cannot un-register itself.

1. Press the **MENU** key.
2. Select **ADVANCED SET** and press the **OK** key.
3. Select **DELETE HS** and press the **OK** key.
4. Select the handset you would like to un-register and press the **OK** key.
5. Enter the PIN.
6. Press the **OK** to confirm.

Changing PIN

A PIN (personal identification number) code is required to access the registration, delete handset, and reset mode.

Please refer to the Default setting table for the default PIN code. You can change it to a unique code of your own. A PIN code can be up to 8 digits long.

1. Press the **MENU** key.
2. Select **ADVANCED SET** and press the **OK** key.
3. Select **CHANGE PIN** and press the **OK** key.
4. Enter the current PIN and press the **OK** key.
5. Enter the new PIN and press the **OK** key.
6. Repeat the new PIN.
7. Press the **OK** to confirm.

Unsuccessful change

You will hear a reject tone if the new PIN is not repeated correctly. Follow steps 3 to 7 and try again.

Resetting

You can reset the display, sounds, and other settings of your phone. Refer to the section *Default settings*.

1. Press the **MENU** key.
2. Select **ADVANCED SET** and press the **OK** key.
3. Select **RESET** and press the **OK** key.
4. Enter the PIN.
5. Press the **OK** to confirm.

Selecting country

[This section is applicable to models with the **COUNTRY SELECTION** option only.]

The correct country setting properly configures your phone to the correct network and language settings of the country that you are current in.

1. Press the **MENU** key.
2. Select **ADVANCED SET** and press the **OK** key.
3. Select **COUNTRY** and press the **OK** key.
4. Select the desire country and press **OK** to confirm.

11 Additional features**Keypad lock**

Keypad can be locked to prevent accidental key press. When the keypad is locked, you can still answer an incoming call by pressing the **TALK** key. During the call, the keypad is active. When the call is ended, the keypad will be locked again.

LOCKING AND UNLOCKING THE KEYPAD

1. Press and hold **KEY LOCK** during standby. When locked, **LOCKED** appears on the display.
2. Press and hold **KEY LOCK** again to unlock the keypad.

NOTE: When a call comes in, your keypad becomes active. When you end the call, your keypad will be locked again.



Shortcut for turning handset ringer on/off

You can use this shortcut to turn on/off the handset ringer.

1. Press and hold the **RINGER OFF** key.

Note:  appears to indicate the ringer is turned off. The handset will not emit any sound for any incoming call.

Message waiting indication

If you have subscribed to the voicemail service from your local service provider and/or from **SKYPE**,  turns on when you have a new message in either of your mailboxes. After you've listened to all the new messages,  will turn off.

Finding a handset

You can locate the handsets by using this feature.

1. Press and hold the **PAGE** key on the base.

Note: All handsets registered to the base will produce the paging tone for 30 seconds and the screen displays **PAGING**. If an external call comes in, all the handsets will stop paging, and play the external call melody.

Stop the paging

You can stop the paging by pressing any key on each handset or pressing the **PAGING** key on the base again.

Not ringing?

A handset will not play the paging melody if it is powered off or in mode other than standby mode; however, all the other handsets will still ring.

CID first ring suppression

If you have subscribed for CallerID service, your phone will suppress the first ring before the CID. After resetting, first ring suppression will be deactivated. Your phone will automatically detect if CID service is subscribed after the first call. If CID service is detected, your phone will start suppressing the first ring after the first call.

Note: Once first ring suppression is activated, the first ring before CID will be suppressed even after you have unsubscribed the CID service. If you have unsubscribed the CID service and do not wish to have the first ring suppressed, please power recycle the base. See Section – Resetting.

12 Using multi-handsets

Note: You need at least 2 handsets to carry out the functions mentioned in this section.

Call someone in the house

You can call someone in the house by using the intercom function on your phone.

To make an intercom call:

1. Press the **INTERCOM** key and wait for the internal dialling tone.
2. Select the handset you want to call and press the **OK** key OR press the number of the handset that you want to call.

Note: You will hear a busv tone if the other handset is not available.

If an external call comes in while you are on an intercom call, the caller ID will display if you have subscribed for caller ID service. To answer the external call:

1. Press the **OFF** key to end the intercom call.
2. Press the **TALK** key to answer the external call.

To exit intercom:

1. Press **Off/Exit Key**.

Call someone in the house while you are talking on the phone

While you are on an outside call, you can put the outside call on hold and make a call (inquiry call) to someone in the house.

To make an inquiry call, during an outside call:

1. Press the **INTERCOM** key.
2. Select the handset you want to call and press the **OK** key OR press the number of the handset that you want to call.
3. Wait for the other handset to answer your call.

Note: After the other handset has answered, you can press the **INTERCOM** key repeatedly to switch between the external call and the intercom call.

Note: If the other handset does not answer, press the **INTERCOM** key again to cancel the attempt and return to the external call.

Transfer your call to another handset

During an external call,

1. Press the **INTERCOM** key.
2. Select the handset you want to call and press the **OK** key OR press the number of the handset that you want to call.
3. Wait for the other handset to answer your call.
4. When the other handset has answered your call, press the **OFF** key or place the handset on cradle. The external call is transferred.

Make a 3-way conference call

You can invite another handset to join a call with the external line.

During an outside call,

1. Press the **INTERCOM** key.
2. Select the handset you want to call and press the **OK** key OR Press the number of the handset that you want to call.
3. Wait for the other handset to answer your call.
4. When the other handset has answered your call, press and hold the **CONFERENCE** key. You are now in a conference call.

Note: Any handset hangs up during a conference call will leave the other handset still connecting with the external call.

13 Appendix

Default Settings

Handset Name* *B205* Contrast *Level 2*


Clock	00:00	Auto Answer	Off
Ringer melody (Telephone)	Melody 1	Menu Language	Language 1
Ringer melody (SKYPE)	Melody 2	Pause duration	Pause 1
Ringer melody (Internal)	Melody 1	Baby Call	Off
Ringer volume	Level 3	Baby Call number	Empty
Alarm	Off	Base Select	Auto
Alarm ringer melody	Melody 3	Country	TBD
Alarm ringer volume	Level 3	CID first ring suppression	Off
Key tone	On	MWI indication	Off
Confirm tone	On	System PIN	0000
Backlit	On	Keylock	Off
Recall duration	Duration 1	Earpiece volume	Medium
Dial mode	Tone		

*This feature/function will not be set back to default after reset.

Troubleshooting

Problem(s)	Solution(s)
No dial tone when pressing TALK.	<ul style="list-style-type: none"> - Make sure that the adapter and the phone cord is connected properly. - Check that the batteries are fully charged and installed properly. - This phone does not work during power failure.
Signal icon is flashing.	<ul style="list-style-type: none"> - Register your handset to a base. - Move closer to the base unit.
The phone does not ring.	<ul style="list-style-type: none"> - Make sure the adapter and the phone cord are connected properly. - Move the handset closer to the base unit. - Turn on the ringer.
When the handset is placed on the charger, no beep is heard.	<ul style="list-style-type: none"> - Take the handset off the charger and put it back again. - Clean charging contacts with a clean and dry cloth. - Turn on the handset tone from the PERSONAL SET Menu. - There will be no beep if the handset's power is turned off previously.
The call waiting call cannot be answered	<ul style="list-style-type: none"> - Check with your local phone company and select the correct recall duration. - End the current call, and press TALK again to pick up the second call.
Battery icon remains empty although the handset has charged for 24 hours.	<ul style="list-style-type: none"> - Please contact your dealer to purchase new rechargeable battery. - Check to make sure the battery icon is scrolling while being charged.
No symbol on the display.	<ul style="list-style-type: none"> - Charge battery. - Make sure the batteries are in the compartment and your handset is ON.
Bad audio quality (crackles, echo, etc.)	<ul style="list-style-type: none"> - Move the PC to a different location. - Install the base unit in a different room or higher location or away from other electronic appliances. - Move closer to the base unit.
Cannot hear the other party clearly/ speaker too loud/quiet	<ul style="list-style-type: none"> - Refer to <i>Making calls – Adjusting the speaker volume on your PC</i>.
Cannot make SKYPEOUT calls.	<ul style="list-style-type: none"> - Enter 00, + (press and hold 0) or 011 before the number to dial. - Check your account to see if you have enough credit. - Check to see if a link is established between then handset and the base. - Refer to <i>Calling a landline number with SKYPEOUT</i> for information.
Busy tone is returned while making SKYPE call	<ul style="list-style-type: none"> - Make sure both SKYPE and the PC application is/are started on the PC and running properly. - Make sure the phone is setup correctly. Refer to section 2: <i>setting up your phone</i>. - Wait for the remote party to be online.

If the above solutions do not help, remove the power from both the handset and the base and restart SKYPE as well as the PC software. Wait for 15 minutes and try again.

 The CE marking certifies the compliance with technical regulations in accordance with the Directive 1999/5/EC for the safety of the user, electromagnetic perturbations and for efficient use of radio spectrum:

73/23/EC and 93/68/EC – Low Voltage Directive as per EN 60950-1
 89/336 EEC – Electromagnetic Compatibility as per EN 310 489-1 and -6
 99/5/EC – Effective use of Radio Spectrum as per EN 301 406