

# Features/Specifications

## Features

### AccelePort Xr 920

- Four or eight ports
- 32-bit IDT RISC processor
- Memory
  - ISA 128K RAM (dual ported) 32K memory window
  - PCI 128K RAM (dual ported)
- Up to 921.6 Kbps
- 16C654 Quad UART
- Surge protection
- Software configurable

### AccelePort Xr-422

- PCI 128K RAM (dual ported)
- Four or eight EIA-422 ports
- 16C554 Quad UART
- Performance up to 230Kbps
- Surge protection
- 32-bit IDT 3041 RISC processor

## Connectors

### AccelePort Xr 920

- DB25 male cable assembly, modem ready
- Options:
  - RJ45 connector box
  - DB25 I/O box

### AccelePort Xr-422

- DB-9 or DB-25 connector options

## System Requirements

### PCI

- One 32-bit slot

### ISA

- One 16-bit slot

## Operating Systems

- Microsoft Windows NT, 95 and 98
- Novell NetWare
- SCO UnixWare
- SCO OpenServer V
- UNIX SRV4
- Citrix WinFrame
- Solaris
- Digital Unix
- QNX
- Linux
- OS/2

For an updated list of software support via Digi and other third party vendors, please contact your Digi sales representative.

## Power Requirements

### AccelePort 4r 920 ISA

- +5V +/-5% 1.40 Amps typical
- +12V +/-5% 0.07 Amps typical
- 12V +/-5% 0.07 Amps typical

### PCI

- +5V +/-5% 0.955 Amps typical
- +12V +/-5% 0.04 Amps typical
- 12V +/-5% 0.04 Amps typical

### AccelePort 8r 920 ISA

- +5V +/-5% 1.4 Amps typical
- +12V +/-5% 0.08 Amps typical
- 12V +/-5% 0.08 Amps typical

### PCI

- +5V +/-5% 0.965 Amp typical
- +12V +/-5% 0.08 Amps typical
- 12V +/-5% 0.08 Amps typical

### AccelePort 4r-422 PCI

- +5V +/-5% 0.955 Amps typical
- +12V +/-5% 0.04 Amps typical
- 12V +/-5% 0.04 Amps typical

### AccelePort 8r-422 PCI

- +5V +/-5% 0.965 Amps typical
- +12V +/-5% 0.08 Amps typical
- 12V +/-5% 0.08 Amps typical

## Environmental Requirements

- Operating temperature: 50°F to 130°F (10°C to 55°C)
- Operating humidity: 10% to 90% non-condensing
- Air movement 30CFM forced
- Altitude: 0 to 12,000 ft (0 to 3,660 m)

## Regulatory Approval

- FCC, Part 15, Class B
- EN55022, Class B
- EN50082-2
- EN60950
- UL-1950
- CSA 22.2 No. 950

## Digi Service and Support

You can purchase any of the Digi Xr Family products with confidence knowing that Digi is here to support you with expert technical support, the industry's strongest warranty (five full years) and a 30-day money-back guarantee.

### Digi International Corporate:

11001 Bren Road East  
 Minnetonka, MN 55343  
 Tel: 1-800-344-4273  
 (612) 912-3444  
 Fax: (612) 912-4952  
 Email: info@dgii.com  
 Web: www.dgii.com

### Regional sales offices:

Minnesota: 1-800-344-4273  
 California: 1-800-466-4526  
 Ohio: 1-800-782-7428  
 Tennessee: 1-800-366-8844  
 Virginia: (703) 553-2560

### International sales offices:

Denmark: +45 49 17 70 90  
 France: +33 1 46 40 39 20  
 Germany: +49 221 920 520  
 The Netherlands: +31 20 5207 566  
 United Kingdom: +44 1276 853 600  
 Australia: +61 2 99 29 0299  
 Hong Kong: +852 2833 1008  
 Singapore: +65 732 1318  
 Email: europeinfo@dgii.com  
 latinamericainfo@dgii.com  
 pacificriminfo@dgii.com

© 1998 Digi International. All rights reserved. The Digi logo is a registered trademark of Digi International. All other brand names and product names are trademarks or registered trademarks of their respective holders.  
 GSA: GS-35F-3395D.



## Dimensions

	Height	Width	Depth	Weight
<b>ISA</b>				
AccelePort Xr 920	4.2 in (10.6 cm)	0.5 in (1.3 cm)	8.25 in (21.0 cm)	6.5 oz (0.18 kg)
<b>PCI</b>				
AccelePort Xr 920	4.2 in (10.6 cm)	0.5 in (1.3 cm)	6.875 in (17.46 cm)	6.4 oz (0.18 kg)
AccelePort Xr-422	4.2 in (10.6 cm)	0.5 in (1.3 cm)	6.875 in (17.46 cm)	6.4 oz (0.18 kg)

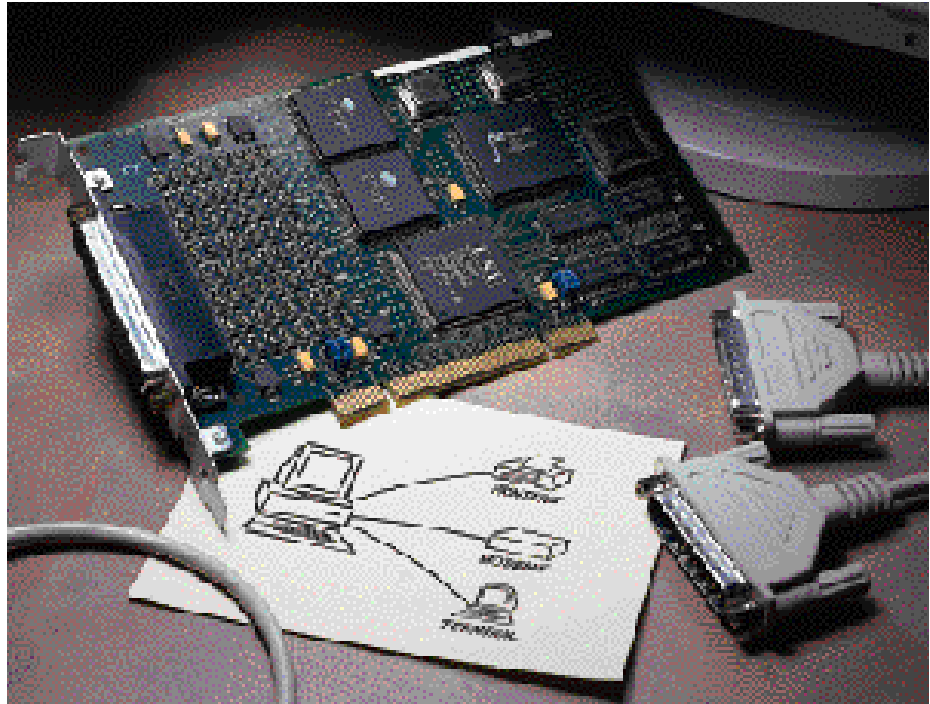
## Models and Part Numbers

	N. American/International Part No.
<b>AccelePort Xr 920 ISA</b>	
AccelePort 4r 920 DB25 cable	70001363
AccelePort 4r 920 no cable	77000562
AccelePort 8r 920 DB25 cable	70001364
AccelePort 8r 920 no cable	77000563
<b>PCI</b>	
AccelePort 4r 920 DB25 cable	70001361
AccelePort 4r 920 no cable	77000560
AccelePort 8r 920 DB25 cable	70001362
AccelePort 8r 920 no cable	77000561
<b>AccelePort Xr-422 PCI</b>	
AccelePort 4r-422 DB25 cable	70001193
AccelePort 4r-422 DB9 cable	70001194
AccelePort 8r-422 DB25 cable	70001199
AccelePort 8r-422 DB9 cable	70001200

# Digi AccelePort Xr Family

P R O D U C T  
P R O F I L E

## High-Performance Intelligent Serial I/O



- Four or eight serial ports support data speeds up to 921.6 Kbps
- Delivers fast, accurate connections for high-speed modems, terminals or any serial peripheral devices
- Supports remote access and multiuser environments
- RISC-based processor enhances overall system throughput by offloading CPU of communication bottlenecks
- Surge protection for superior reliability

Today's remote access and multiuser environments demand high-speed communications, but faster modems and terminals can't do the job alone. They need to be connected to high-speed serial ports designed to keep pace with these higher-performing devices. That's why leading VARs and system integrators specify Digi's AccelePort Xr Family when they need intelligent boards that deliver the utmost in serial I/O performance.

Digi offers two solutions in the AccelePort Xr Family. The AccelePort Xr 920 products provide the highest-performing throughput, up to 921.6 Kbps in four- and eight-port EIA-232 solutions, and the AccelePort Xr-422 products provide four- and eight-port EIA-422 solutions for transmitting data up to 230 Kbps over greater distances, ensuring complete reliability in harsh environments. When combined with Digi's on-board firmware and driver software, the AccelePort Xr Family offers the most complete and powerful serial I/O solutions on the market today.

Digi's firmware and driver software is specifically engineered to work in concert

with a broad base of multiuser and network operating systems. The AccelePort 4r and 8r are packaged with SCO, Novell, Microsoft NT and Windows 95 and 98 drivers.

The AccelePort Xr Family's pace-setting speed comes from a powerful RISC-based processor combined with Digi's patented FEP/OS. Only available on Digi intelligent serial I/O boards, the FEP/OS dramatically increases data throughput and enhances overall system response.

No more costly downtime! All AccelePort Xr boards deliver high reliability. By surge protecting every EIA-232 signal, the AccelePort Xr Family supplies the industry's most complete, multi-strike surge protection for serial communications.

Speed. Accuracy. Reliability. All this and more is offered with the feature-rich AccelePort Xr Family. Review all the features and specifications—then select the AccelePort Xr Family member that best satisfies your needs. It's a smart choice, no matter which Digi AccelePort Xr you choose.



# Digi Eliminates Communication Bottlenecks, Lowers Host CPU Utilization with High-Speed Intelligent Serial Ports.

## High-Speed Serial Ports Maximize Speeds, Minimize Line Costs

As terminals, printers and modems run faster, the need for even faster serial connections becomes more critical. Trying to keep pace with today's high-speed serial devices using standard COM1/COM2 ports often causes a throughput bottleneck that leads to sluggish system performance and decreased productivity.

Supporting speeds up to 921.6 Kbps, the AccelePort Xr 920 four- and eight-port serial boards deliver all the speed you need for today's demanding serial connections.

## Lower CPU Utilization Optimizes System Performance

A powerful RISC-based processor offloads the host CPU of many communication bottlenecks and runs Digi's Front End Processor/Operating System (FEP/OS). This patented firmware transmits and receives data so effectively that it reduces CPU overhead for most serial I/O tasks to less than .1% of capacity. It also provides extensive diagnostics and high-level shared-memory interfaces to optimize and customize serial functions.

Speed and performance are further enhanced with high-performance communications chips and large memory buffers that enable the AccelePort Xr boards to manage data more effectively. The result—the AccelePort Xr Family delivers a complete, robust serial I/O solution for the most active remote access and multiuser environments.

## Digi Offers More Serial I/O Solutions Than Any Other Source

Supporting more operating systems than any competitor with an in-house engineering staff dedicated to early support of new releases and platforms, Digi is the leading and most dependable source for serial I/O solutions on the market today.

Besides broad based O/S support, the AccelePort Xr family is offered with Digi's complete array of connection options. All Digi AccelePort Xr 920 models include a DB25 cable assembly. Optionally, an RJ45 connector box or a DB25 I/O box is available. The AccelePort Xr-422 product is available with either a DB25 cable or a DB9 cable.

### AccelePort Xr 920

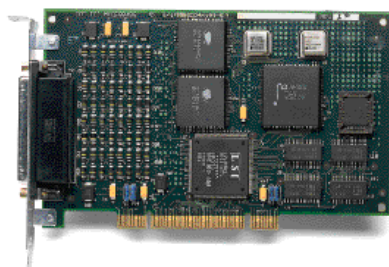
- Supports ISA and PCI
- EIA-232 connections
- Shipped modem ready with DB25 male cable assembly

### Optional Connector Options:

- RJ45 connector box
- DB25 I/O box
- DB25 male cable assembly

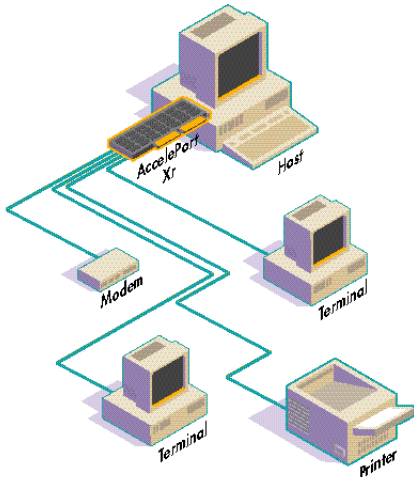
### AccelePort Xr-422

- Supports PCI
- EIA-422 connections
- Choice of DB25 or DB9 cables



## Multuser Solutions

Designed for applications that require fast, accurate serial connections, the AccelePort 4r 920 and 8r 920 are ideal platforms for upgrading text-only applications to the sophisticated graphics capabilities of X-terminals. The AccelePort Xr Family multiuser solutions are recommended for multiple-point data collection, multiuser workgroup and factory automation applications.

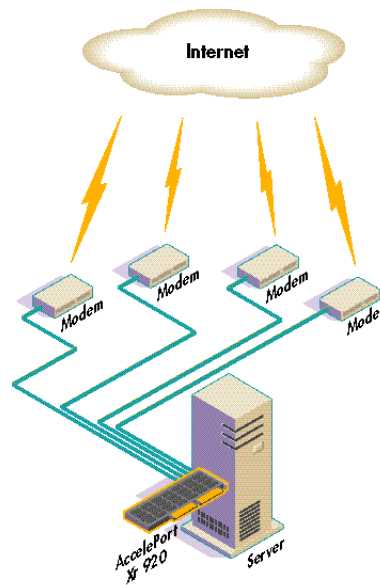


The AccelePort family of adapters are compatible with leading multiuser developers including SCO OpenServer V and UnixWare, Solaris, Linux, Digital Unix and QNX. Terminals, printers, modems and most other asynchronous serial peripherals are supported. SCO and UNIX SVR4 drivers also support the Digi MenuPort Interface (MPI), a menu-driven software package designed for faster, easier installation. Besides facilitating driver changes and installations, MPI also allows users to access Digi Port Authority (DPA), a software diagnostic tool that enables users to easily monitor the status of the FEP/OS and individual ports.

## Remote LAN Access Solutions

Demand for high-speed remote access continues to increase dramatically. Branch offices want to tap into the resources of corporate LANs. Mobile users want to dial into networks for email, downloading files, checking product shipments and more. Local users want dial-out access to communicate with other remote LANs. And everyone wants an on-ramp to the information superhighway.

The AccelePort Xr 920 Family is specifically designed and packaged to provide a superior server solution in dial-in/dial-out environments. Besides built-in speed and data handling efficiencies that keep pace with the fastest high-speed modems—and ISDN terminal adapters—the AccelePort 4r 920 and 8r 920 support a comprehensive array of remote access software including Novell NetWare Connect and Microsoft Windows NT.



### Multuser Solutions

- Easily accommodates many high-speed serial devices—modems, terminals, cash registers and more

- Optimum dependability for point-of-sale, data collection and industrial applications

- EIA-422 solutions provide the ability to transmit signals over greater distances

### Remote LAN Access Solutions

- Speed plus superior reliability for remote access applications

- Ideal for Internet or intranet connectivity

- Designed for fast, accurate data transmissions—supports high-speed modems and ISDN terminal adapters