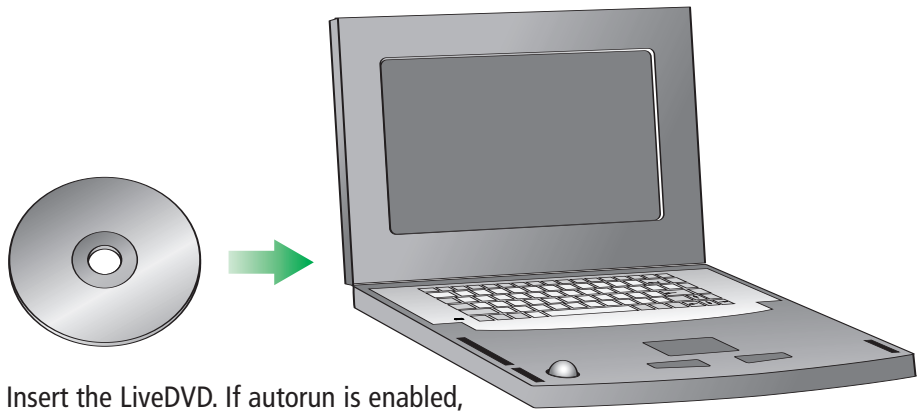


1 Install Software



Insert the LiveDVD. If autorun is enabled, the "Welcome" web page will appear. If not, open the file "docs/Software/Welcome/welcome.html" on the LiveDVD. Follow the instructions on the "Welcome" page to install Digi Embedded Linux software.



Quick Start Guide

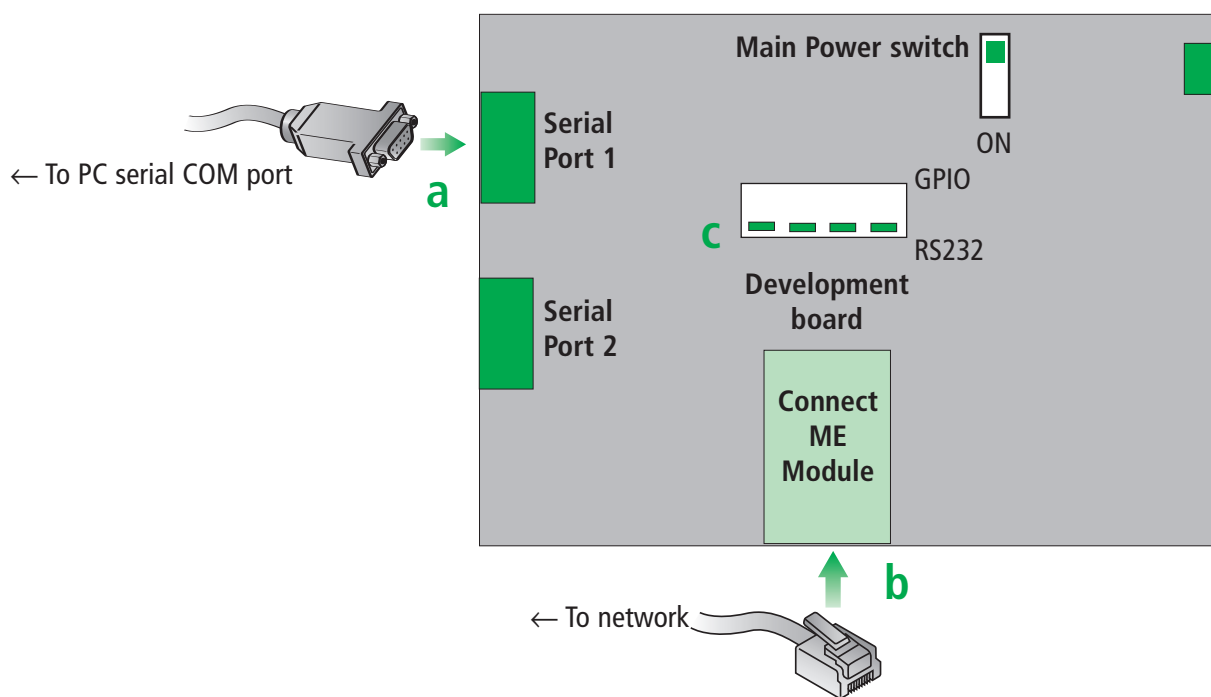
Digi JumpStart Kit™
Embedded Linux
Digi Connect ME 9210



PN (1P): 90001016 A

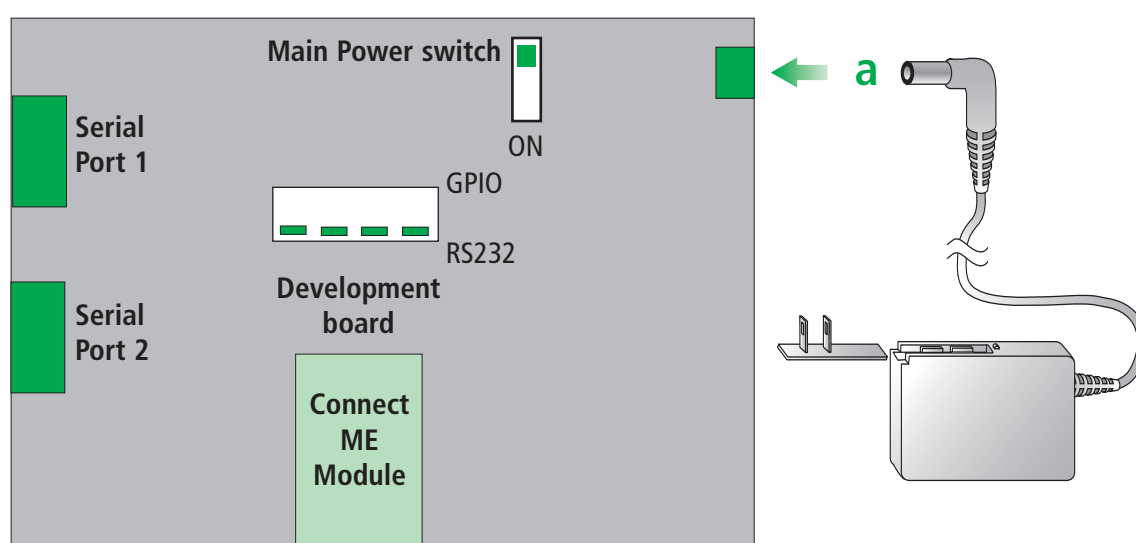
2 Connect Hardware to Development Board

- a** Connect Serial port 1
- b** Connect Ethernet
- c** Set I/O selection switches to RS232



3 Connect Power

- a** Add the appropriate plug and connect power supply



4 What's next?

- a** Follow the instructions on *Building Your First Application*. This guide introduces you to quickly creating and running an application in the target platform. *Building Your First Application* is accessible from an icon on the desktop after installing Digi Embedded Linux.
- b** After going through *Building Your First Application*, you are encouraged to read the Digi ESP™ online help, accessible from the Digi ESP menu **Help > Help Contents** which explains in detail all the elements of the development process: kernel configuration, debugging, file transfer, firmware update, etc.

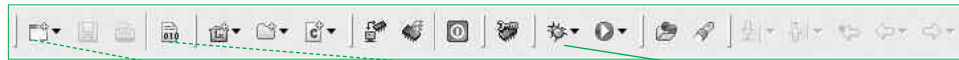
Features of Digi ESP™

Digi ESP™ maintains multiple layouts of views, menus, and toolbars to help you complete different tasks. These layouts are called perspectives. All perspectives are completely customizable and Digi ESP™ saves the changes made to the perspective so it will be reflected the next time it is opened.

Perspectives toolbar



Digi EL perspective



Digi ESP™ toolbar

While all operations can be done from the menus, many commonly used functions can be performed from the main Digi ESP™ toolbar.

The contents of this toolbar change based on the active perspective and items may be enabled or disabled based on the state of either the active view or editor.



Project explorer view

Displays your projects and files. Configure, build, rebuild and install your Digi EL projects using the Project Explorer toolbar buttons.



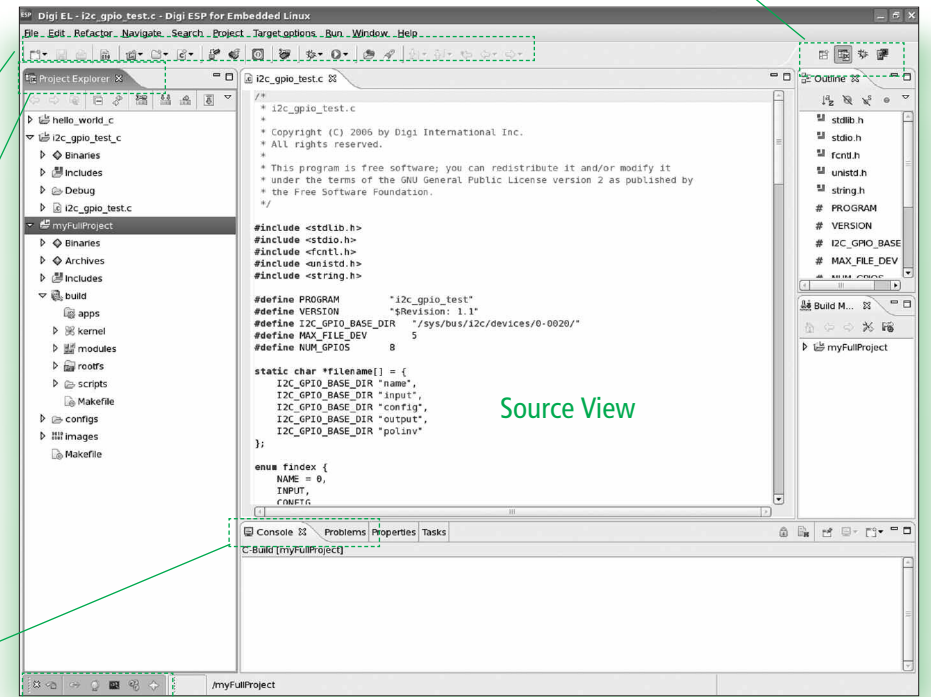
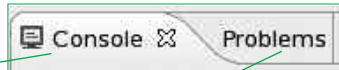
Console and Problems views

Console tab

This view displays the complete compiler output.

Problems tab

Look here for compile errors. Double-click the errors to navigate to the location in your source code.



Welcome toolbar

A mini version of the welcome screen. Use this toolbar to navigate the welcome screen to find Getting Started tutorials, samples, and other helpful information.



Debug perspective

Debug view

Displays threads, thread status, and thread stack frames.

Other debug views

View and modify local and global variables, breakpoints, or monitor information about the registers.

TIP: While debugging at a breakpoint: hover over a variable to reveal its value.

Disassembly view

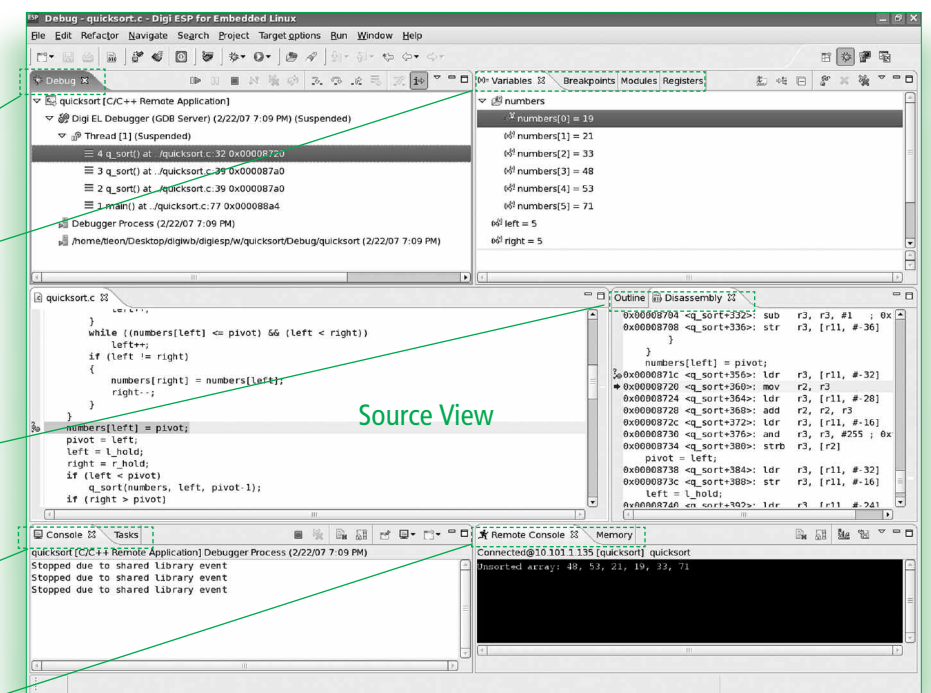
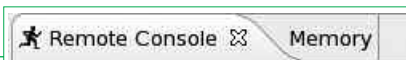
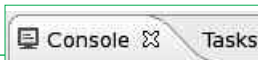
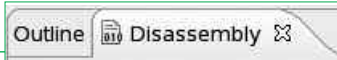
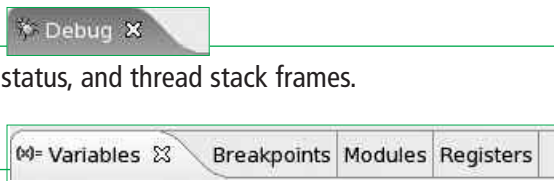
View and step into the disassembled program code.

Console view

Shows the output of the GDB debugger and enables GDB commands to be entered.

Remote Console and Memory views

Remote Console view is the default console for standard I/O for your application. Use Memory view to inspect regions of memory.



Target Monitor perspective

Target options toolbar

Create new configurations, get information about the target, reprogram the Flash memory, or reset the device remotely.

Remote Explorer view

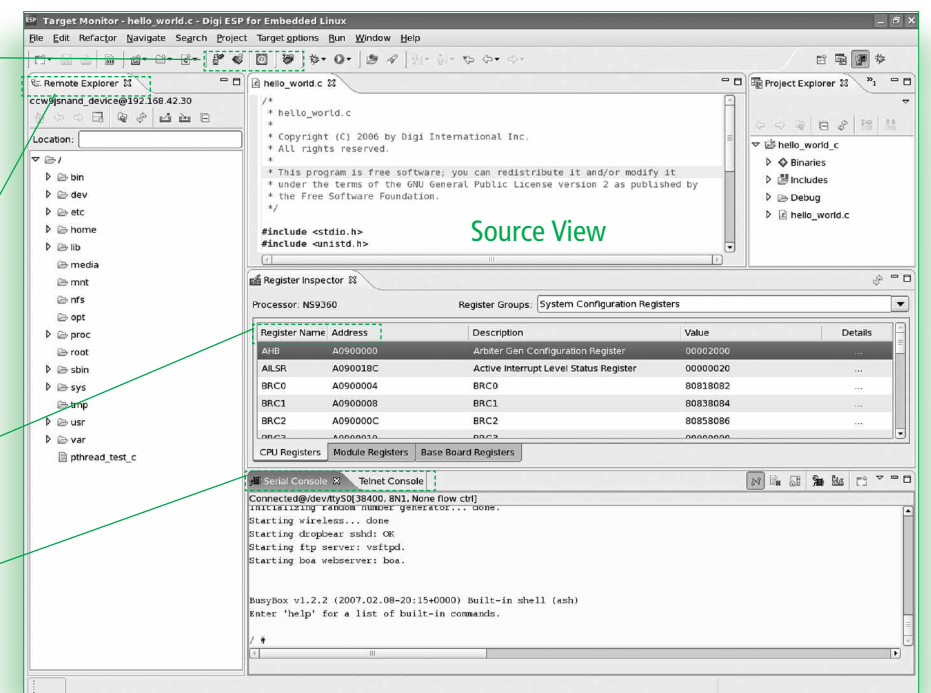
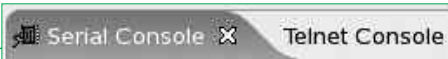
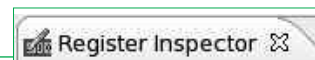
Explore the target's file system and navigate through remote directories. Transfer files to and from the development computer and open them in the Source view.

Register Inspector view

Monitor and edit the target's System-on-Chip (SoC) registers.

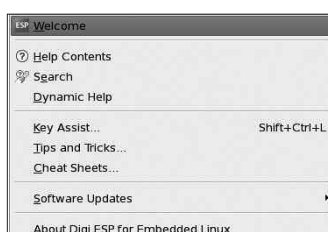
Serial and Telnet Console views

Use the embedded consoles for connecting to the target. Serial Console accesses via the serial port I/O. Telnet Console is used for connecting to the target using Telnet.



Additional Information

Digi ESP™ includes multiple tutorials to help build the application. Find more information by clicking the **Help > Welcome** menu.



Refer to the items below for additional information and assistance on developing with Digi Embedded Linux

- The product support web page: www.digiembedded.com/support
- The product support web forums: www.digiembedded.com/forums