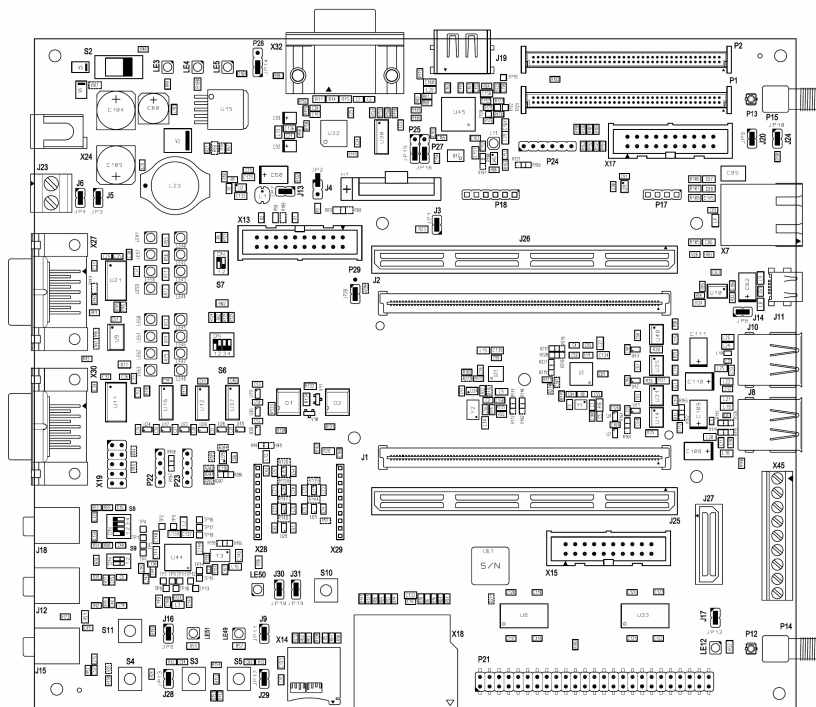




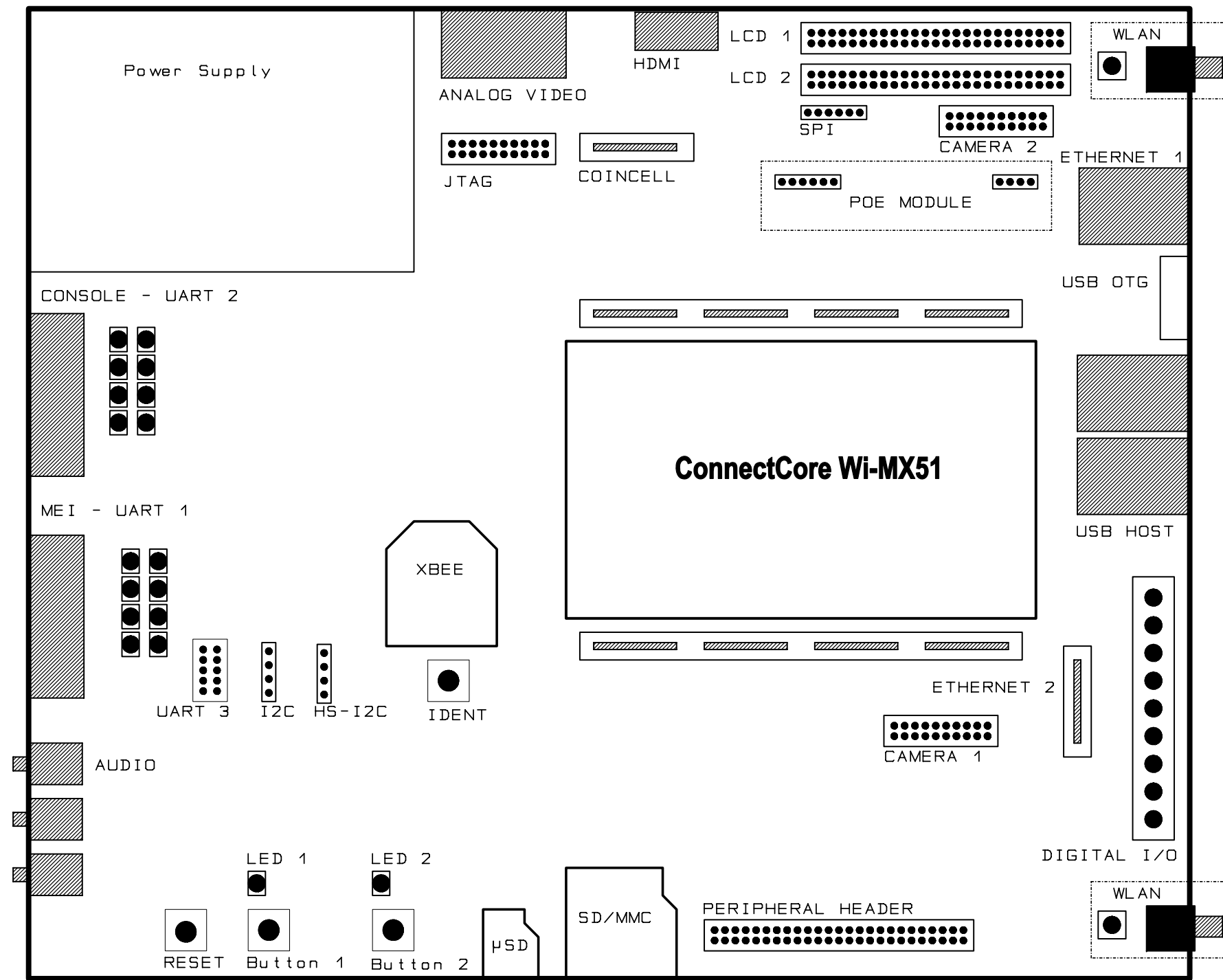
55001488-01 Rev01P

ConnectCore Wi-i.MX 51 JumpStart Board


3xUART, XBee, 4xUSB Host, USB OTG,  
2xEthernet, 2xLCDs, 2xCamera, 2xSDIO, HDMI, AUDIO

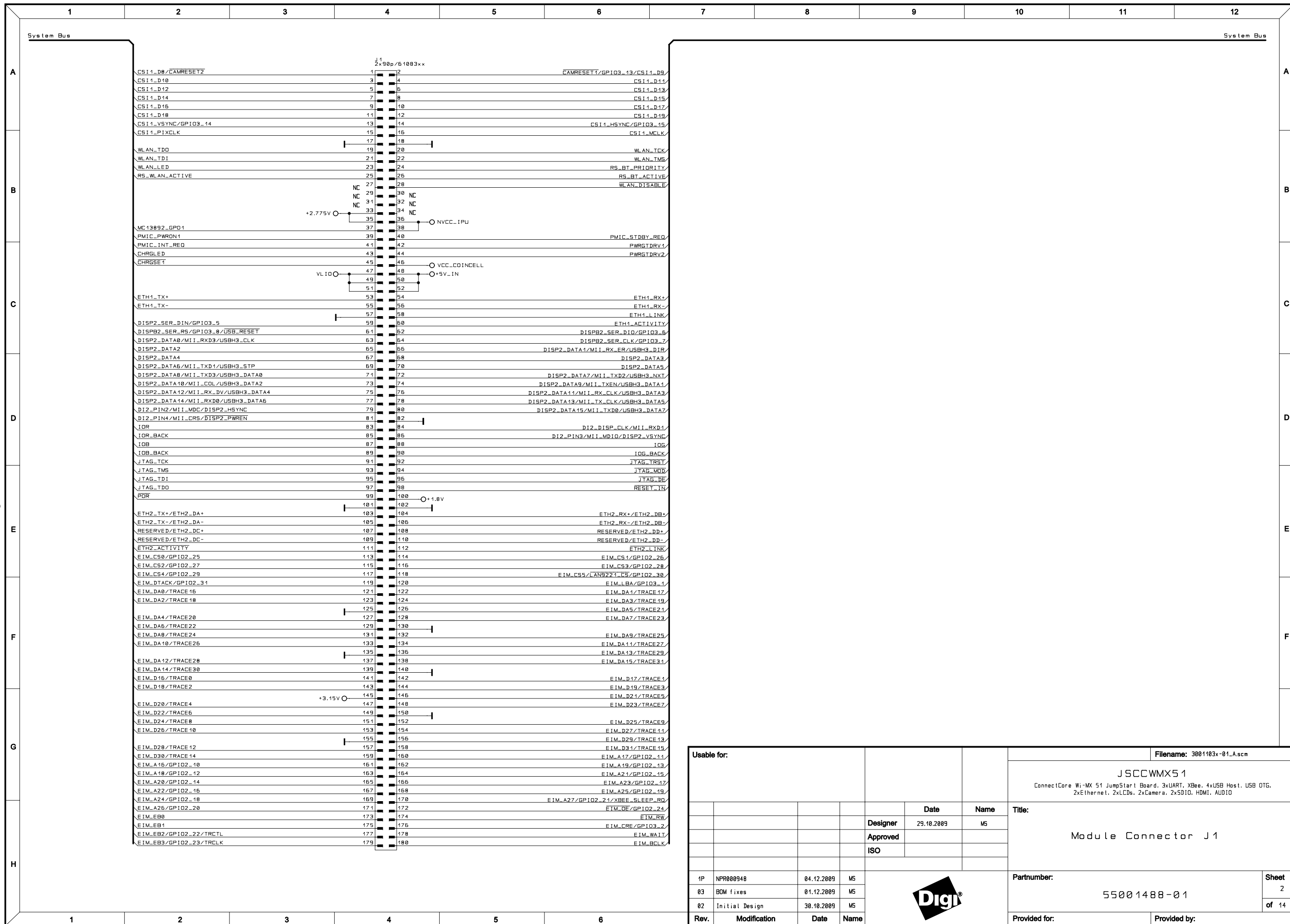


# ConnectCore Wi-MX51 JumpStart board



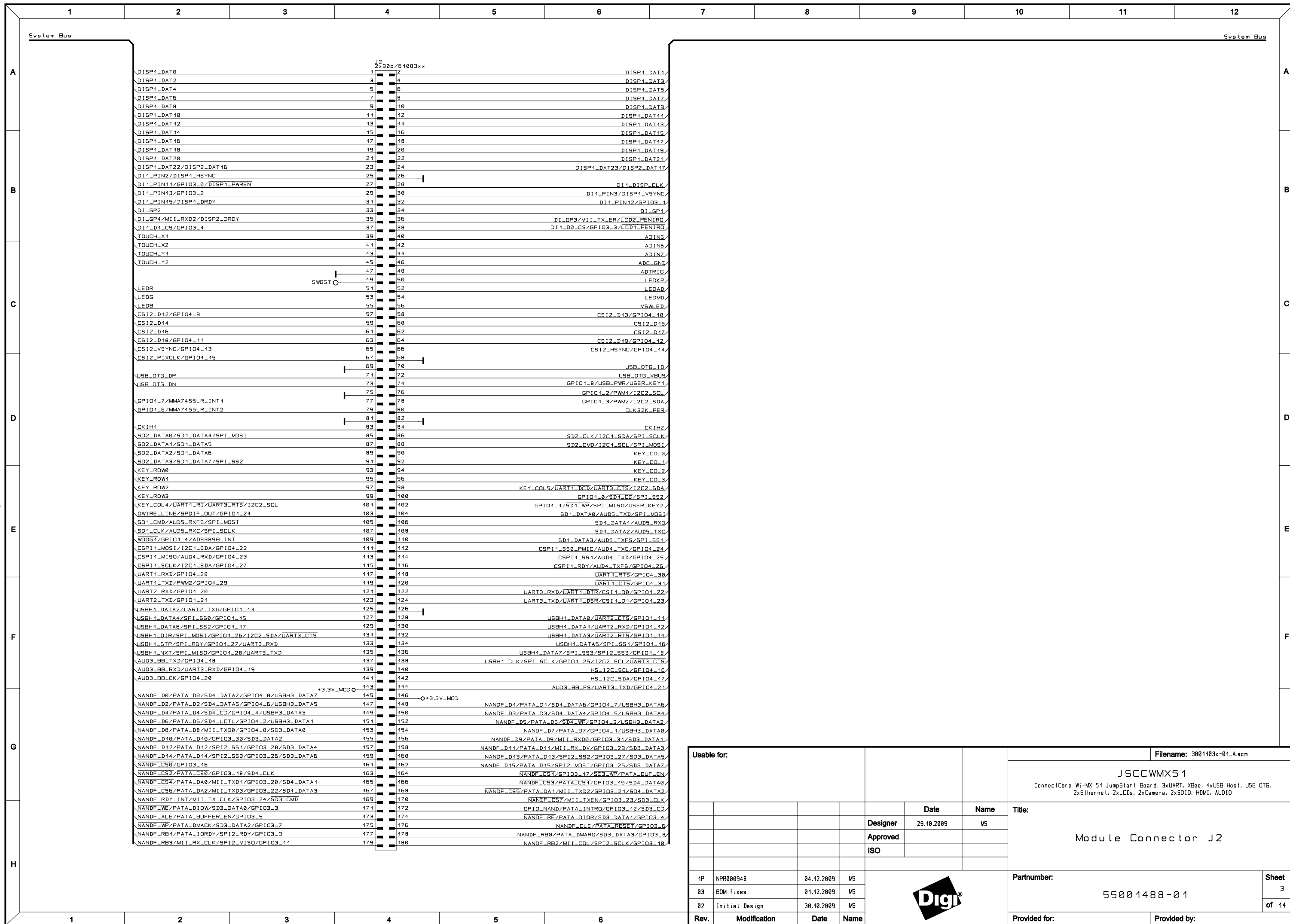
All rights reserved © Digi International Inc.

Usable for:				Filename: 3001103x-01_A.scm			
				<b>JSCCWMX51</b> ConnectCore Wi-MX51 JumpStart Board, 3xUART, XBee, 4xUSB Host, USB OTG, 2xEthernet, 2xLCDs, 2xCamera, 2xSDIO, HDMI, AUDIO			
				<b>Title:</b> Block Diagram			
				<b>Partnumber:</b> 55001488-01			
				<b>Sheet</b> 1 <b>of</b> 14			
				<b>Provided for:</b>			
				<b>Provided by:</b>			
							
1P	NPR000948	04.12.2009	MS				
03	BOM fixes	01.12.2009	MS				
02	Initial Design	30.10.2009	MS				
Rev.	Modification	Date	Name				



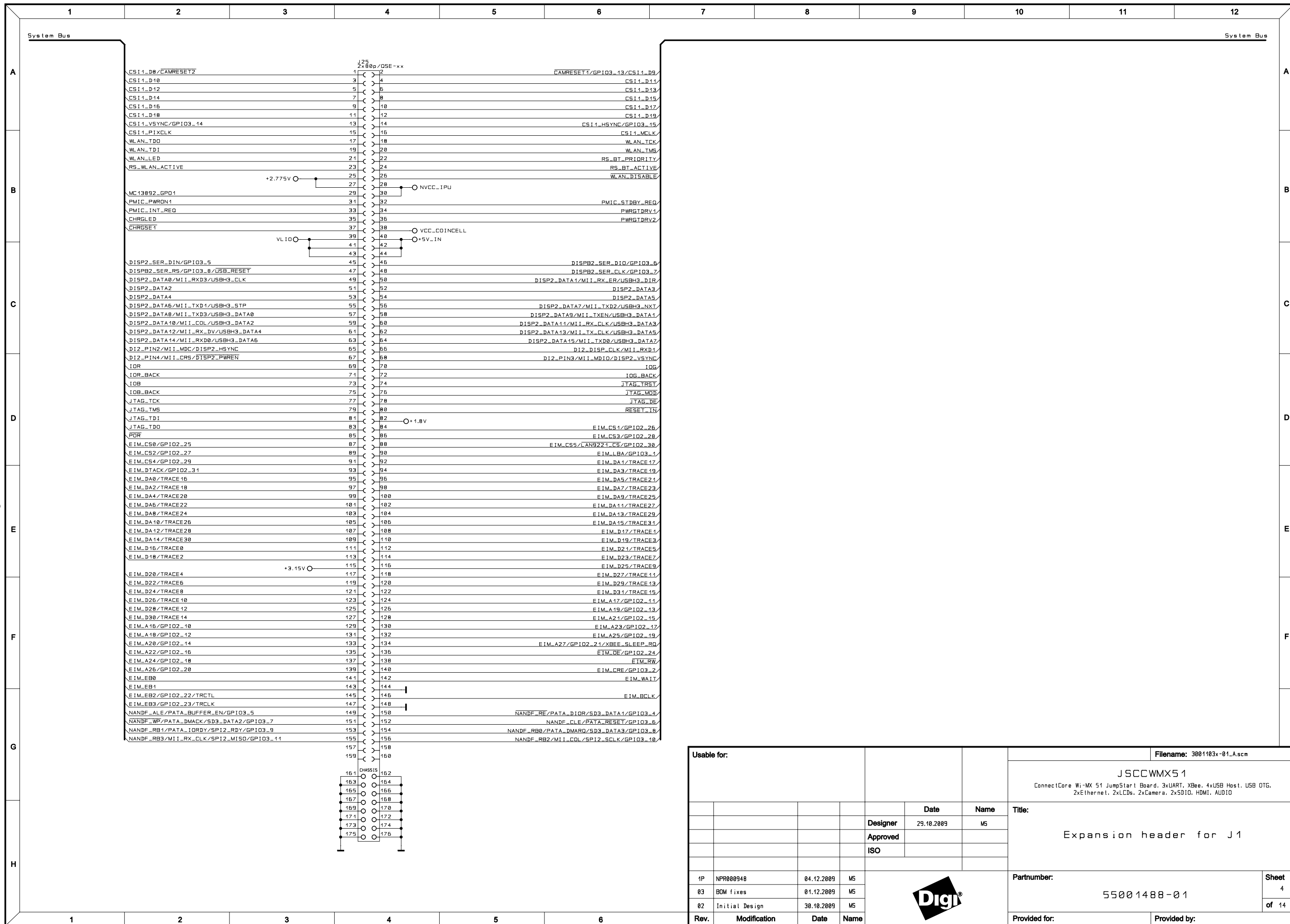
Usable for:				File name: 3001103x-01_A.scm	
				<b>JSCCWMX5 1</b> ConnectCore Wi-MX 51 JumpStart Board, 3xUART, XBees, 4xUSB Host, USB OTG, 2xEthernet, 2xLCDs, 2xCamera, 2xSDIO, HDMI, AUDIO	
		<b>Date</b>	<b>Name</b>	<b>Title:</b>	
		29.10.2009	MS	<b>Module Connector J1</b>	
		<b>Approved</b>			
		<b>ISO</b>			
<b>1P</b>	NPR008948	04.12.2009	MS	<b>Partnumber:</b>	<b>Sheet</b>
<b>03</b>	BOM fixes	01.12.2009	MS	<b>55001488-01</b>	<b>2</b> of 14
<b>02</b>	Initial Design	30.10.2009	MS		
<b>Rev.</b>	<b>Modification</b>	<b>Date</b>	<b>Name</b>	<b>Provided for:</b>	<b>Provided by:</b>



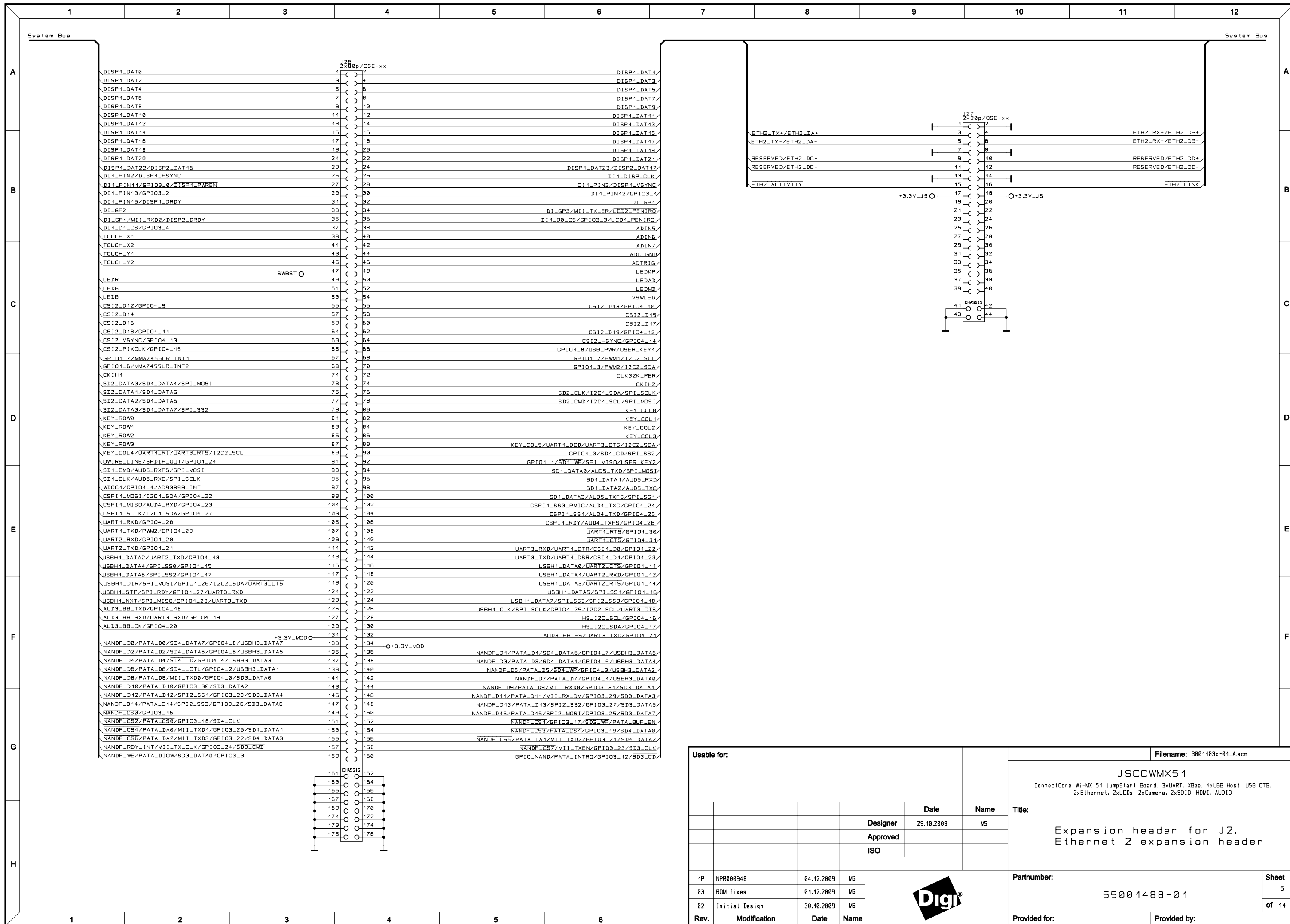


Usable for:				Filename: 3001103x-01_A.scm	
				<b>JSCCWMX5 1</b> ConnectCore Wi-MX 51 JumpStart Board, 3xUART, XBeec, 4xUSB Host, USB OTG, 2xEthernet, 2xLCDs, 2xCamera, 2xSDIO, HDMI, AUDIO	
				<b>Date</b>	<b>Name</b>
				29.10.2009	MS
				<b>Designer</b>	
				<b>Approved</b>	
				<b>ISO</b>	
				<b>Module Connector J2</b>	
1P	NPR000940	04.12.2009	MS	<b>Partnumber:</b>	
03	BOM fixes	01.12.2009	MS	55001488-01	
02	Initial Design	30.10.2009	MS	<b>Sheet</b>	
				3	
				of 14	
<b>Rev.</b>	<b>Modification</b>	<b>Date</b>	<b>Name</b>	<b>Provided for:</b>	<b>Provided by:</b>

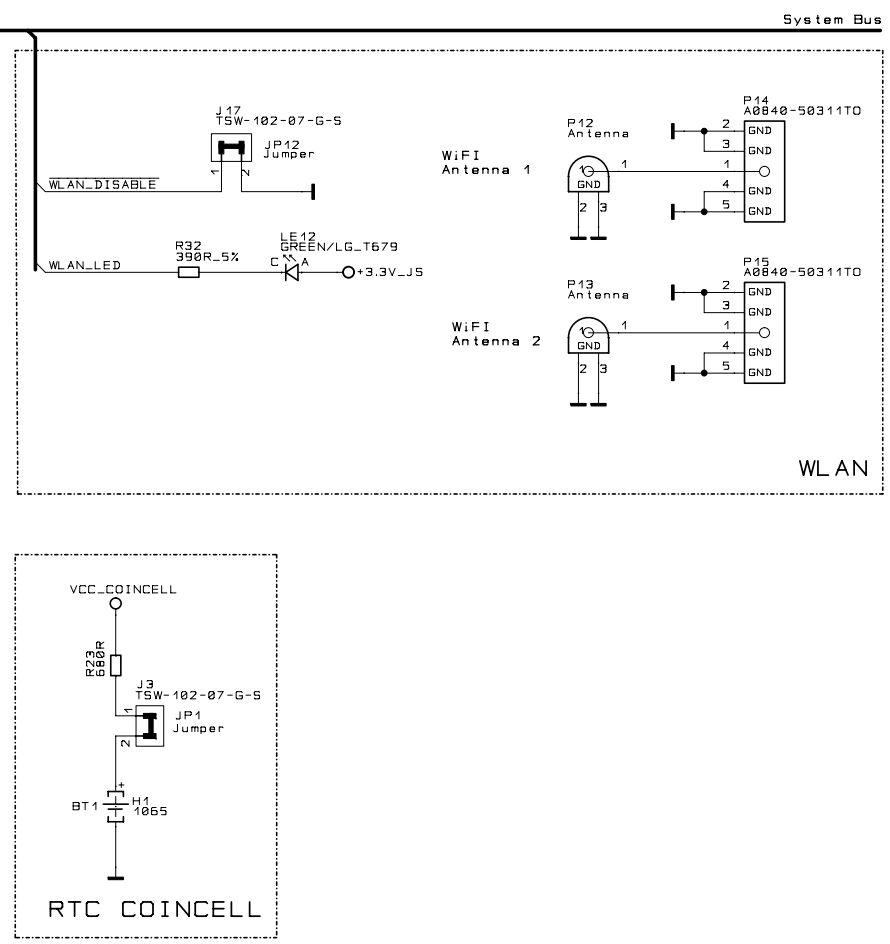
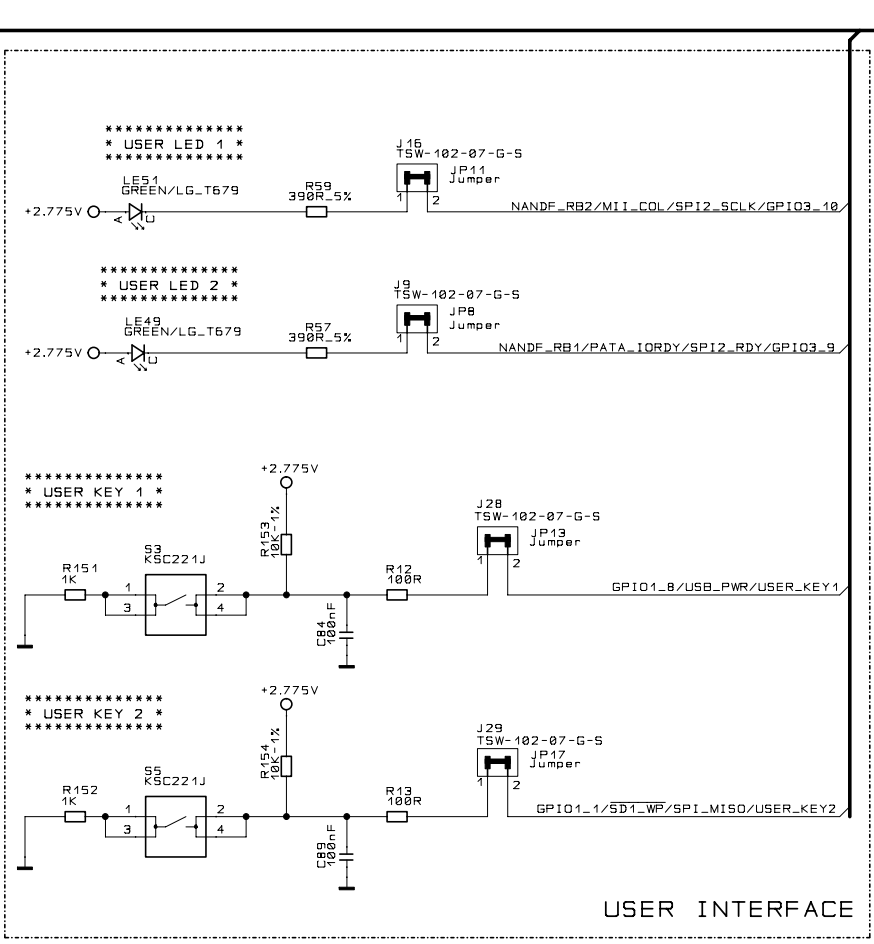
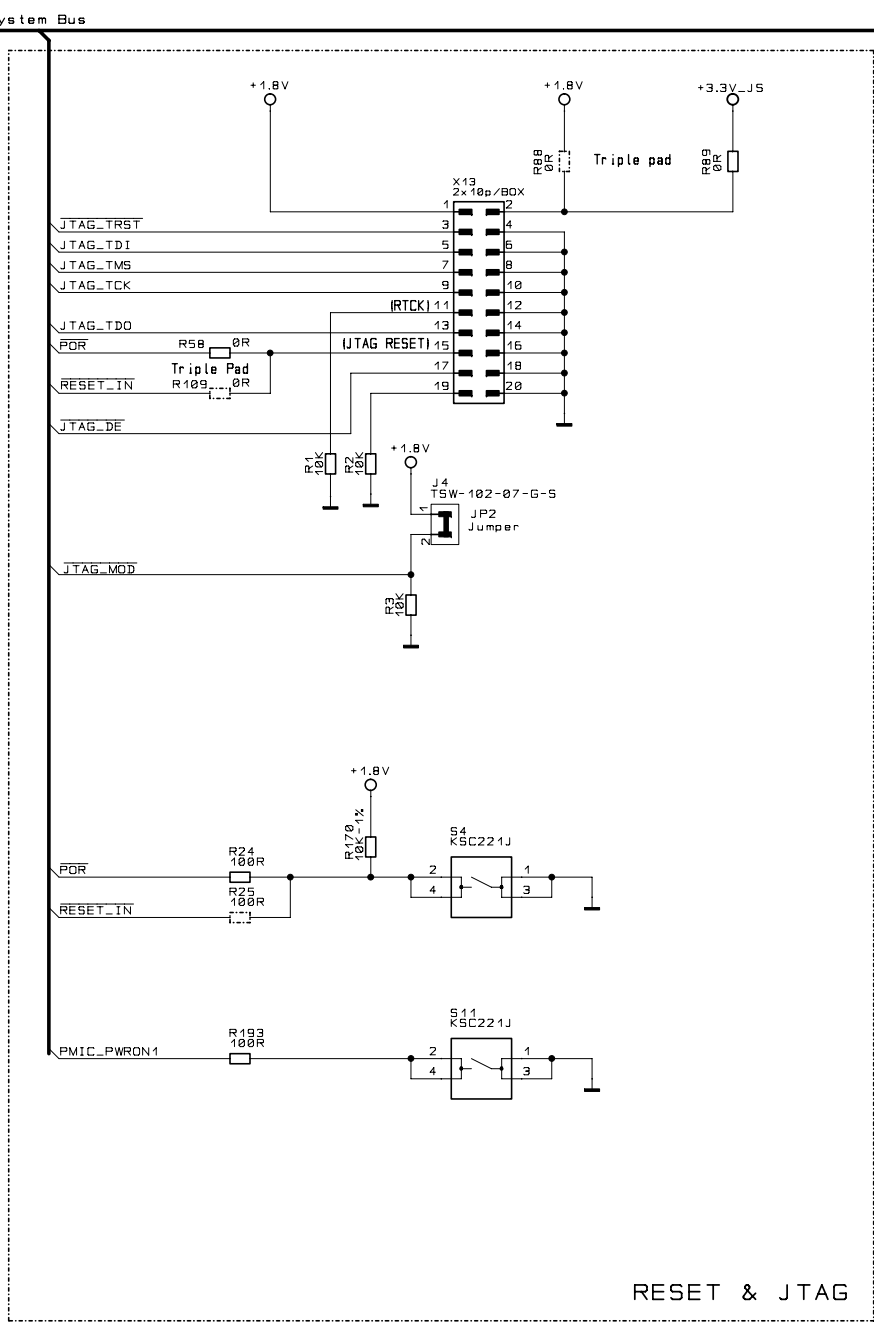
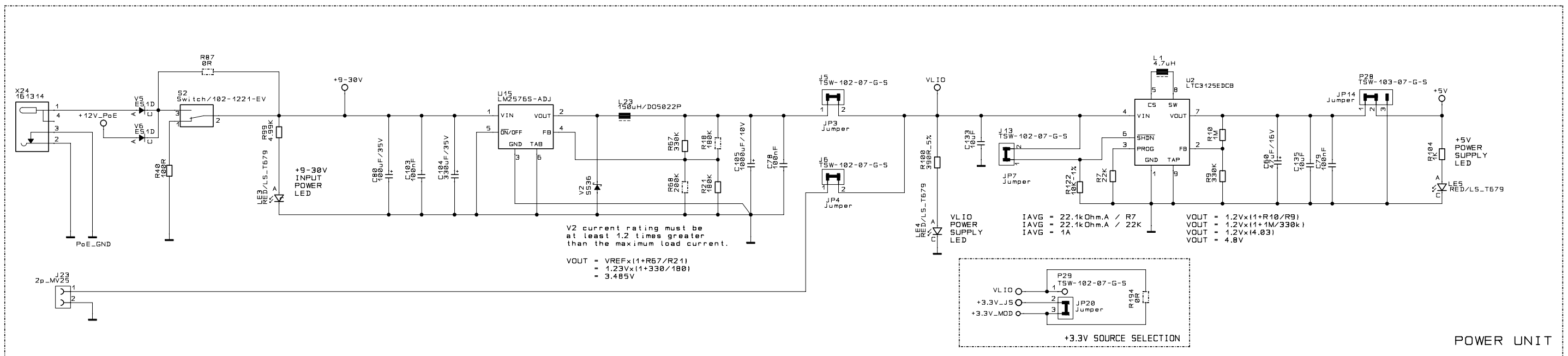




Usable for:				Filename: 3001103x-01_A.scm	
				<b>JSCCWMX51</b> ConnectCore Wi-MX 51 JumpStart Board, 3xUART, XBee, 4xUSB Host, USB OTG, 2xEthernet, 2xLCDs, 2xCamera, 2xSDIO, HDMI, AUDIO	
				Title: Expansion header for J1	
				Partnumber: 55001488-01	
				Sheet 4 of 14	
				Provided for: Provided by:	
1P	NPR000940	04.12.2009	MS		
03	BOM fixes	01.12.2009	MS		
02	Initial Design	30.10.2009	MS		
Rev.	Modification	Date	Name		

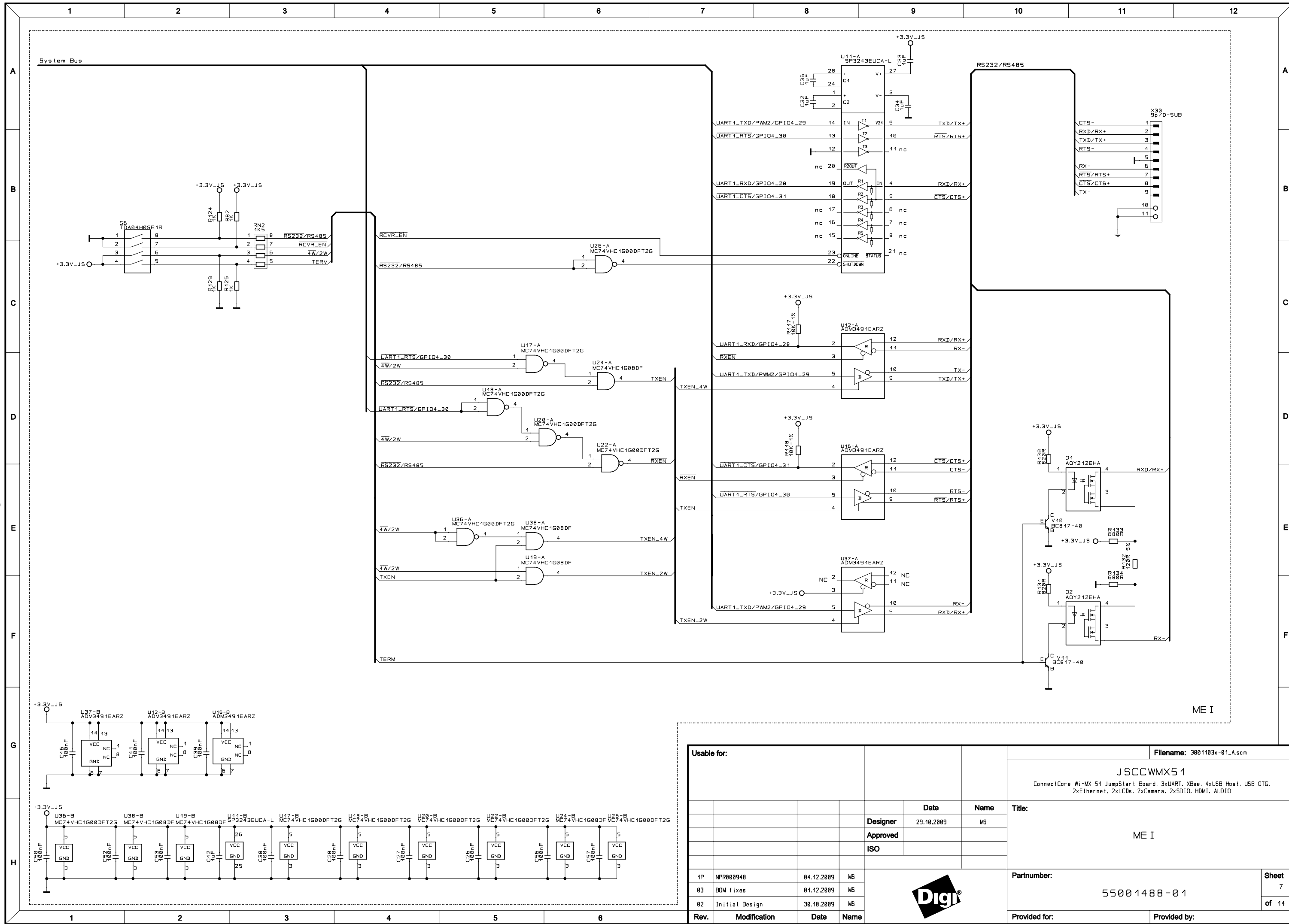


Usable for:				Filename: 3001103x-01_A.scm	
				<b>JSCCWMX51</b> ConnectCore Wi-MX 51 JumpStart Board, 3xUART, XBees, 4xUSB Host, USB OTG, 2xEthernet, 2xLCDs, 2xCamera, 2xSDIO, HDMI, AUDIO	
		<b>Date</b>	<b>Name</b>	<b>Title:</b>	
		29.10.2009	MS	Expansion header for J2, Ethernet 2 expansion header	
		<b>Designer</b>			
		<b>Approved</b>			
		<b>ISO</b>			
1P	NPR008948	04.12.2009	MS	<b>Partnumber:</b>	55001488-01
03	BOM fixes	01.12.2009	MS		
02	Initial Design	30.10.2009	MS		
<b>Rev.</b>	<b>Modification</b>	<b>Date</b>	<b>Name</b>	<b>Provided for:</b>	<b>Provided by:</b>
				<b>Partnumber:</b>	55001488-01
				<b>Sheet</b>	5
				<b>of</b>	14

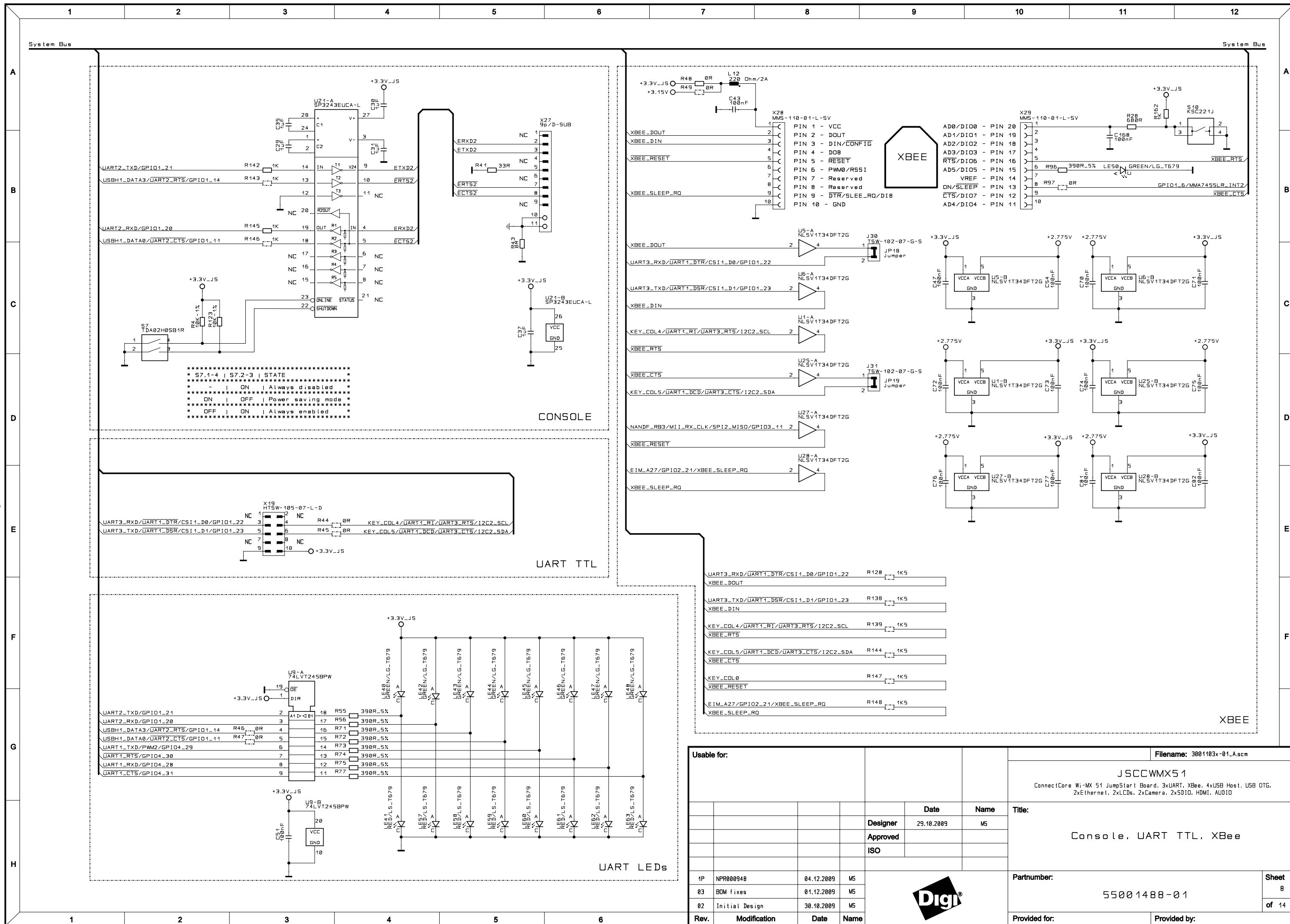


Usable for:				Date		Name		Title:		File name: 3001103x-01_A.scm	
				29.10.2009		MS		JSCCWMX51		ConnectCore Wi-MX 51 JumpStart Board, 3xUART, XBee, 4xUSB Host, USB DTG, 2xEthernet, 2xLCDs, 2xCamera, 2xSDIO, HDMI, AUDIO	
				Designer				Power supply, RTC Coincell, JTAG		Partnumber:	
				Approved						55001488-01	
				ISO						Sheet	
1P NPR00948				04.12.2009		MS				6	
03 BOM fixes				01.12.2009		MS				of 14	
02 Initial Design				30.10.2009		MS					
Rev.				Modification		Date		Name		Provided for:	
										Provided by:	





Usable for:				File name: 3001103x-01_A.scm	
				JSCCWMX51	
				ConnectCore Wi-MX 51 JumpStart Board, 3xUART, XBeec, 4xUSB Host, USB OTG, 2xEthernet, 2xLCDs, 2xCamera, 2xSDIO, HDMI, AUDIO	
				ME I	
				Part number: 55001488-01	
				Sheet 7 of 14	
				Provided for: Provided by:	
1P	NPR000940	04.12.2009	MS		
03	BOM fixes	01.12.2009	MS		
02	Initial Design	30.10.2009	MS		
Rev.	Modification	Date	Name		



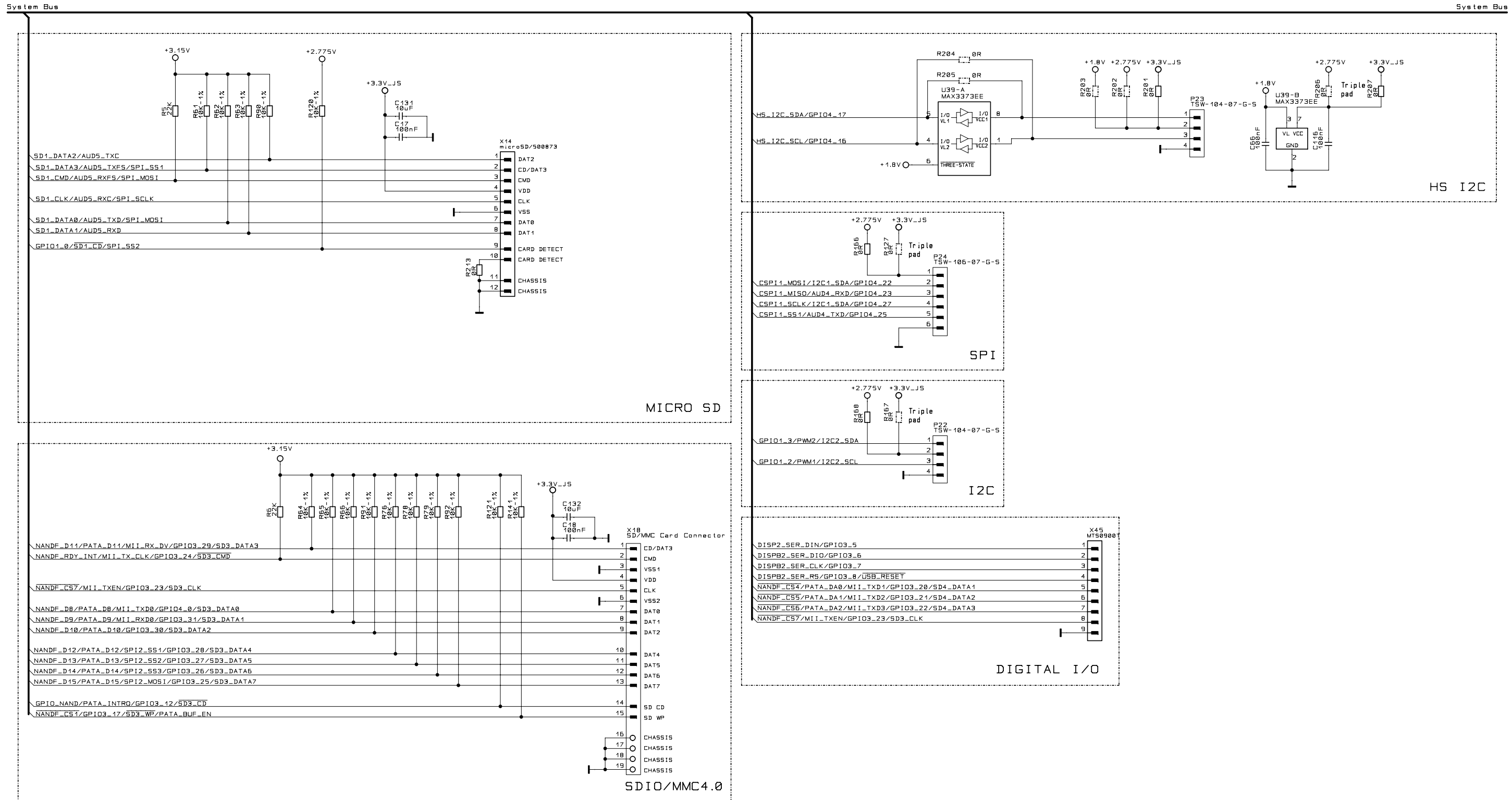
```


*****
* S7.1-4 | S7.2-3 | STATE
*****
*      | ON | Always disabled
*****
*      | ON | OFF | Power saving mode
*****
* OFF | ON | Always enabled
*****
    
```

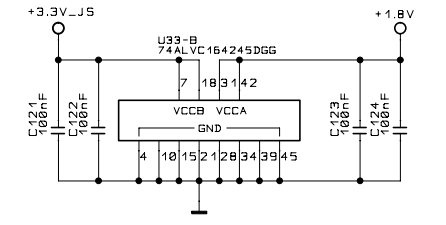
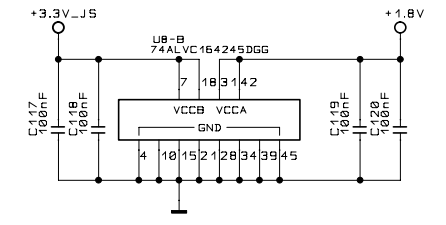
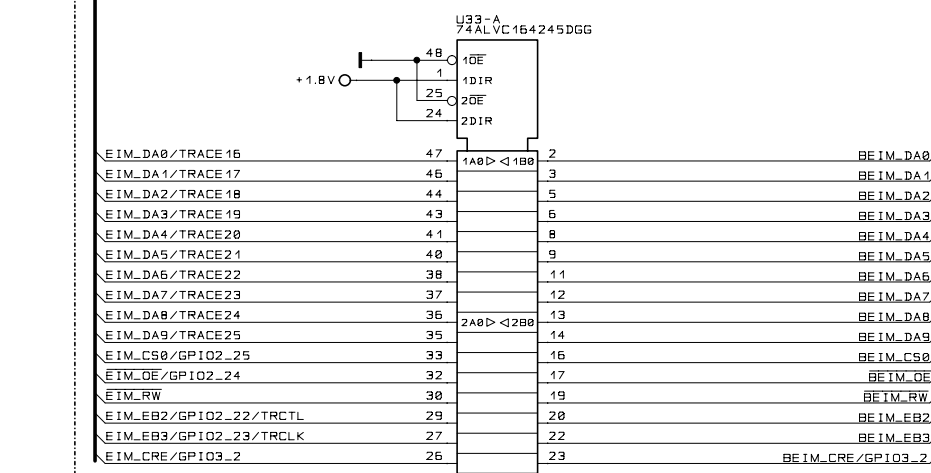
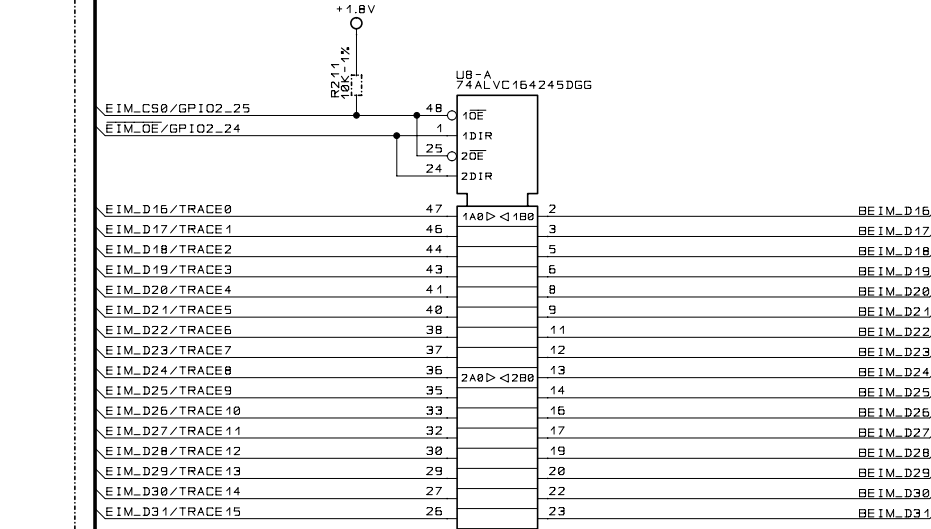
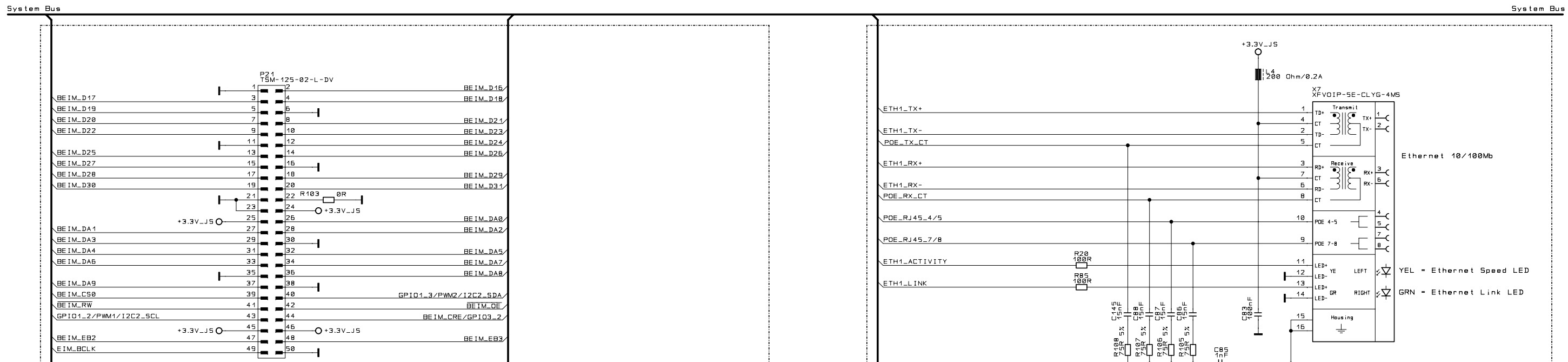
- UART3\_RXD/UART1\_DTR/CSI1\_D0/GPIO1\_22 R128 1K5
- XBEE\_DOUT
- UART3\_TXD/UART1\_DSR/CSI1\_D1/GPIO1\_23 R138 1K5
- XBEE\_DIN
- KEY\_COL4/UART1\_RT/UART3\_RTS/I2C2\_SCL R139 1K5
- XBEE\_RTS
- KEY\_COL5/UART1\_DCD/UART3\_CTS/I2C2\_SDA R144 1K5
- XBEE\_CTS
- KEY\_COL0 R147 1K5
- XBEE\_RESET
- EIM\_A27/GPIO2\_21/XBEE\_SLEEP\_RQ R148 1K5
- XBEE\_SLEEP\_RQ

Usable for:		Date		Name		Title:		File name: 3001103x-01_A.scm	
		29.10.2009		MS		JSCCWMX51		ConnectCore Wi-MX 51 JumpStart Board, 3xUART, Xbee, 4xUSB Host, USB OTG, 2xEthernet, 2xLCDs, 2xCamera, 2xSDIO, HDMI, AUDIO	
		Designer		Approved		ISO		Console, UART TTL, XBee	
1P NPR000948		04.12.2009		MS		Partnumber:		55001488-01	
03 BOM fixes		01.12.2009		MS		Sheet		8	
02 Initial Design		30.10.2009		MS		of		14	
Rev.		Modification		Date		Name		Provided for:	
								Provided by:	

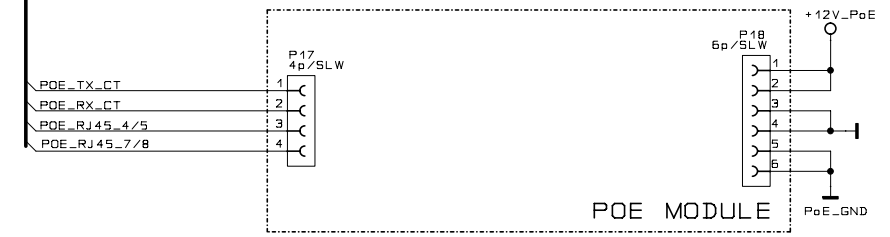
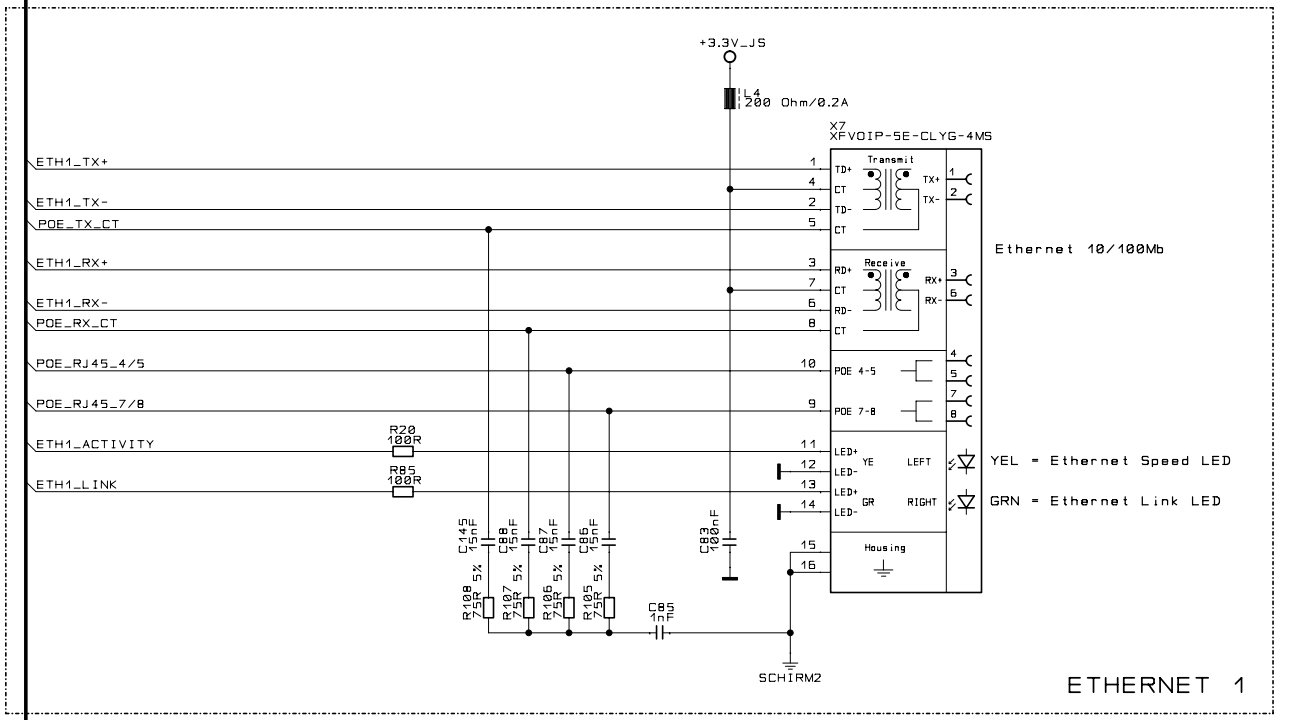




Usable for:				Filename: 3001103x-01_A.scm			
				JSCCWMX51 ConnectCore Wi-MX 51 JumpStart Board, 3xUART, XBees, 4xUSB Host, USB OTG, 2xEthernet, 2xLCDs, 2xCamera, 2xSDIO, HDMI, AUDIO			
				<b>Date</b>	<b>Name</b>	<b>Title:</b>	
				29.10.2009	MS	SD/MMC, MICRO-SD, SPI, I2C, DIGITAL I/O	
				<b>Designer</b>			
				<b>Approved</b>			
				<b>ISO</b>			
1P	NPR000940	04.12.2009	MS				
03	BOM fixes	01.12.2009	MS				
02	Initial Design	30.10.2009	MS				
<b>Rev.</b>	<b>Modification</b>	<b>Date</b>	<b>Name</b>	<b>Partnumber:</b>		<b>Sheet</b>	
				55001488-01		9	
				<b>Provided for:</b>		<b>of</b> 14	
				<b>Provided by:</b>			



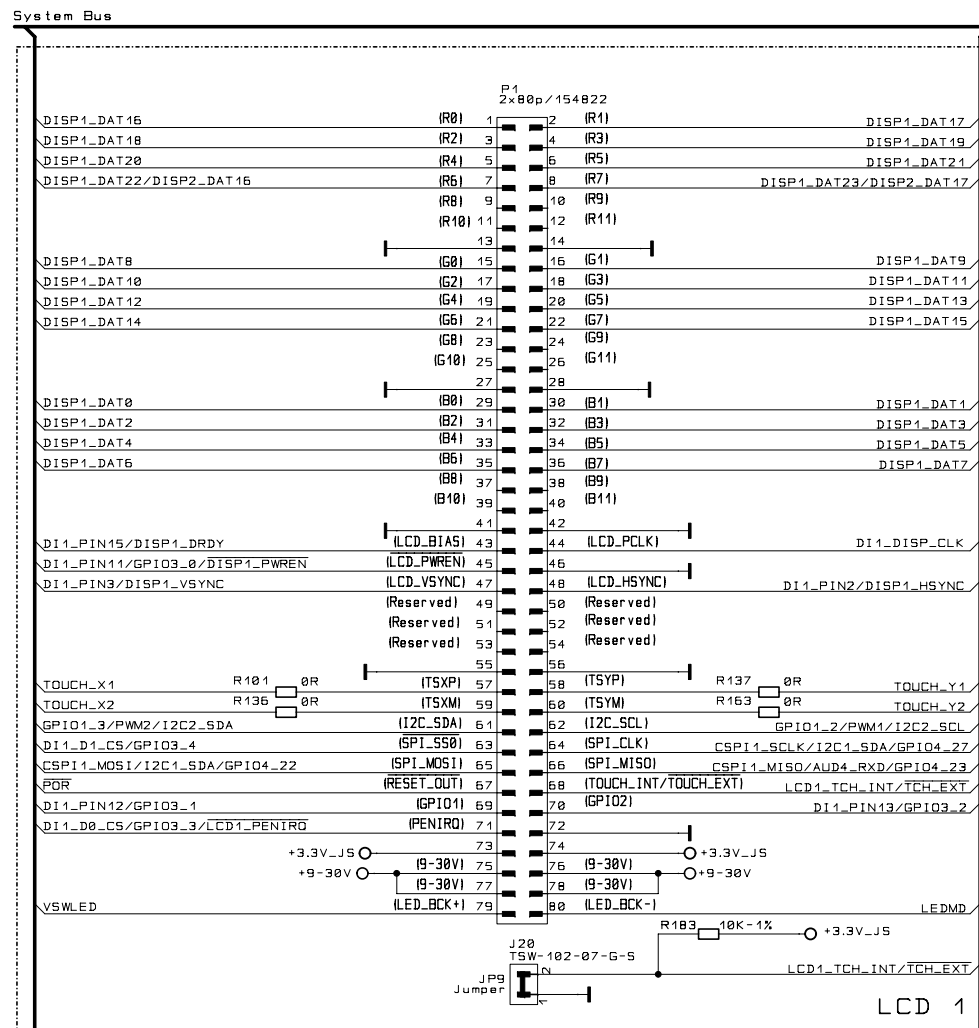
PERIPHERAL HEADER

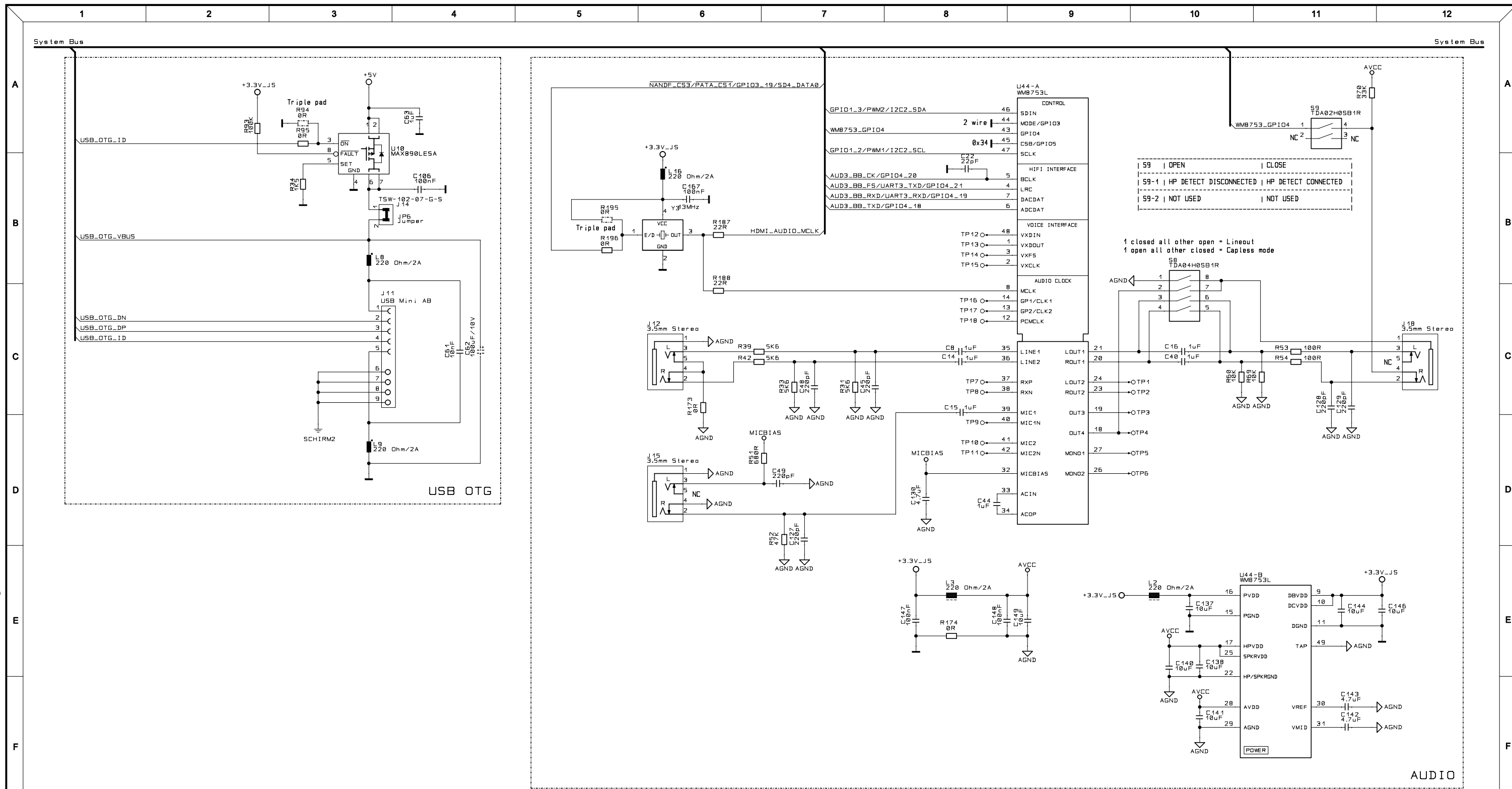



Usable for:				Filename: 3001103x-01_A.scm	
				JSCCWMX51	
				ConnectCore Wi-MX 51 JumpStart Board, 3xUART, XBeec, 4xUSB Host, USB DTG, 2xEthernet, 2xLCDs, 2xCamera, 2xSDIO, HDMI, AUDIO	
				Title: Peripheral Header, Ethernet 1	
				Partnumber: 55001488-01	
				Sheet 10 of 14	
				Provided for: Provided by:	
1P	NPR000940	04.12.2009	MS		
03	BOM fixes	01.12.2009	MS		
02	Initial Design	30.10.2009	MS		
Rev.	Modification	Date	Name		

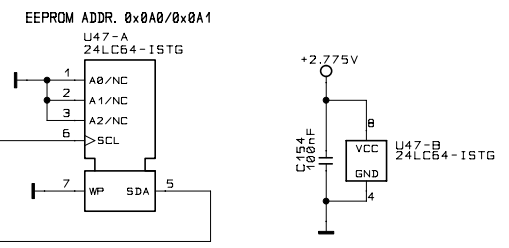
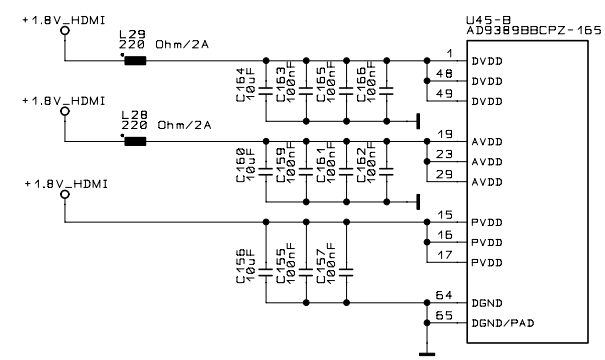
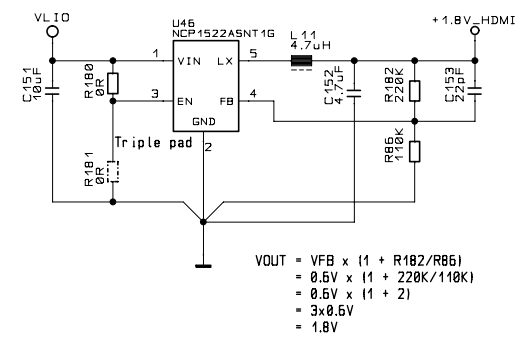
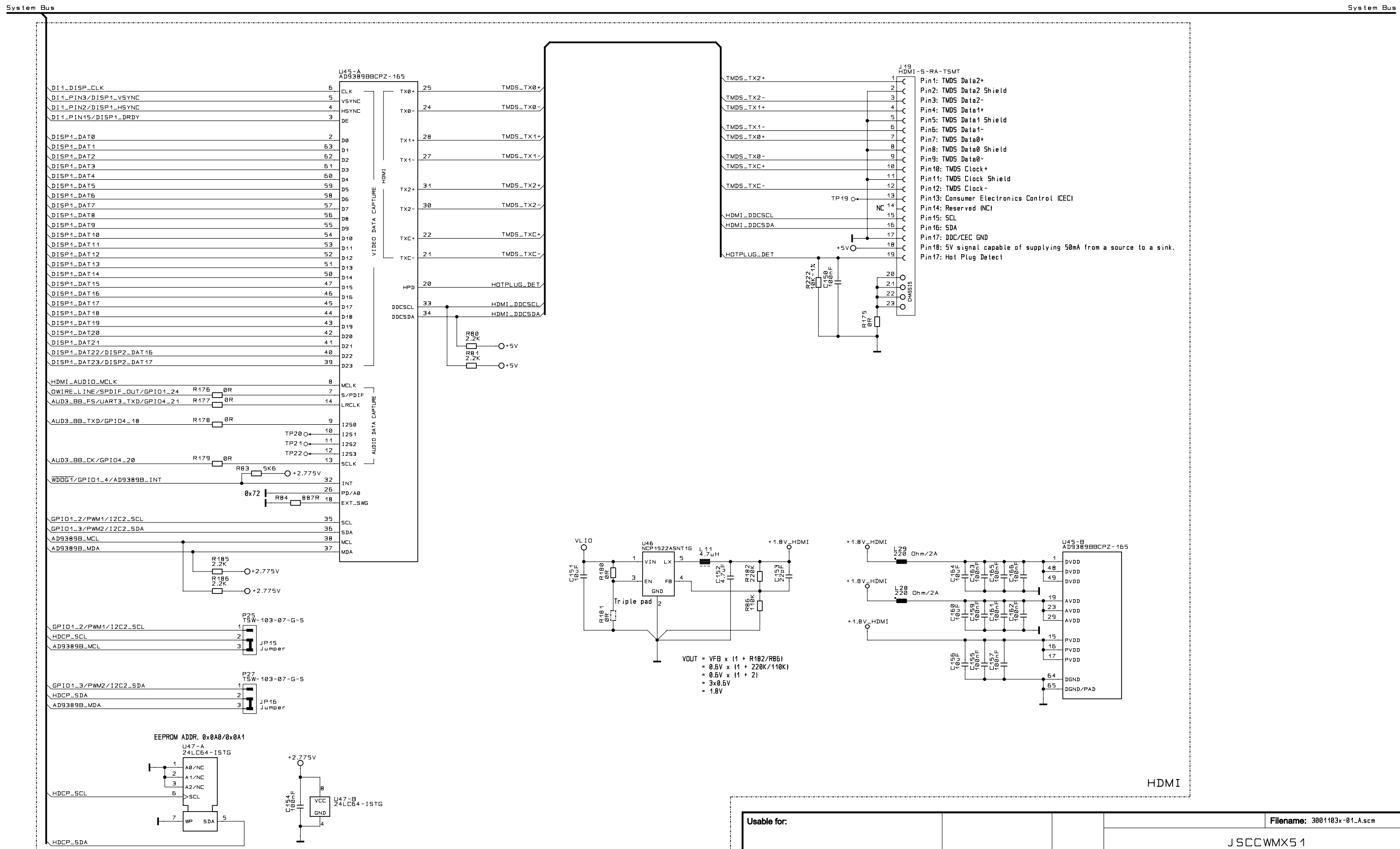






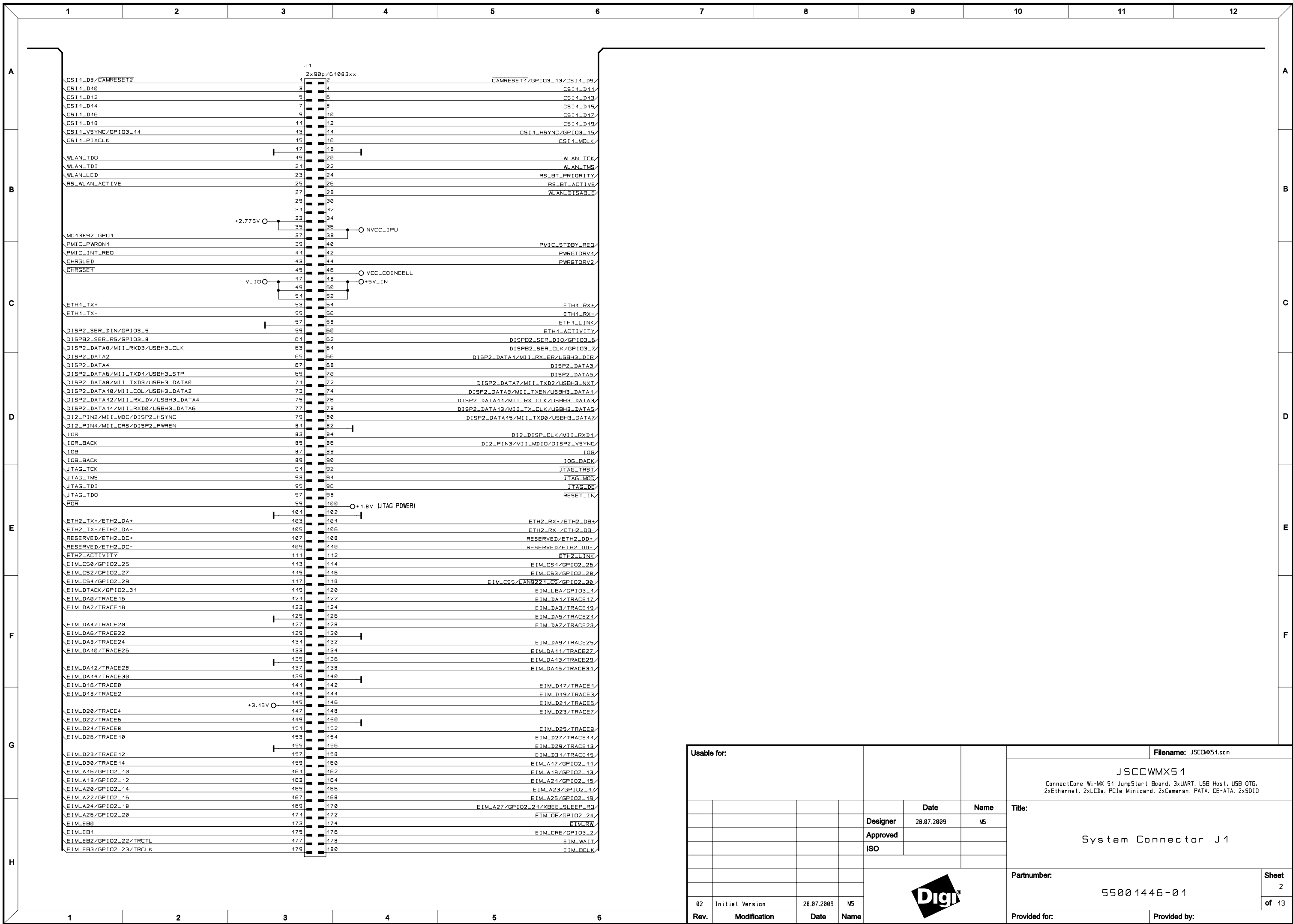


Usable for:				Filename: 3001103x-01_A.scm			
				JSCCWMX51			
				ConnectCore Wi-MX 51 JumpStart Board, 3xUART, XBees, 4xUSB Host, USB OTG, 2xEthernet, 2xLCDs, 2xCamera, 2xSDIO, HDMI, AUDIO			
				Title: USB OTG, AUDIO			
				Partnumber: 55001488-01			
				Sheet 13 of 14			
Rev. Modification Date Name				Provided for: Provided by:			
1P	NPR000948	04.12.2009	MS				
03	BOM fixes	01.12.2009	MS				
02	Initial Design	30.10.2009	MS				

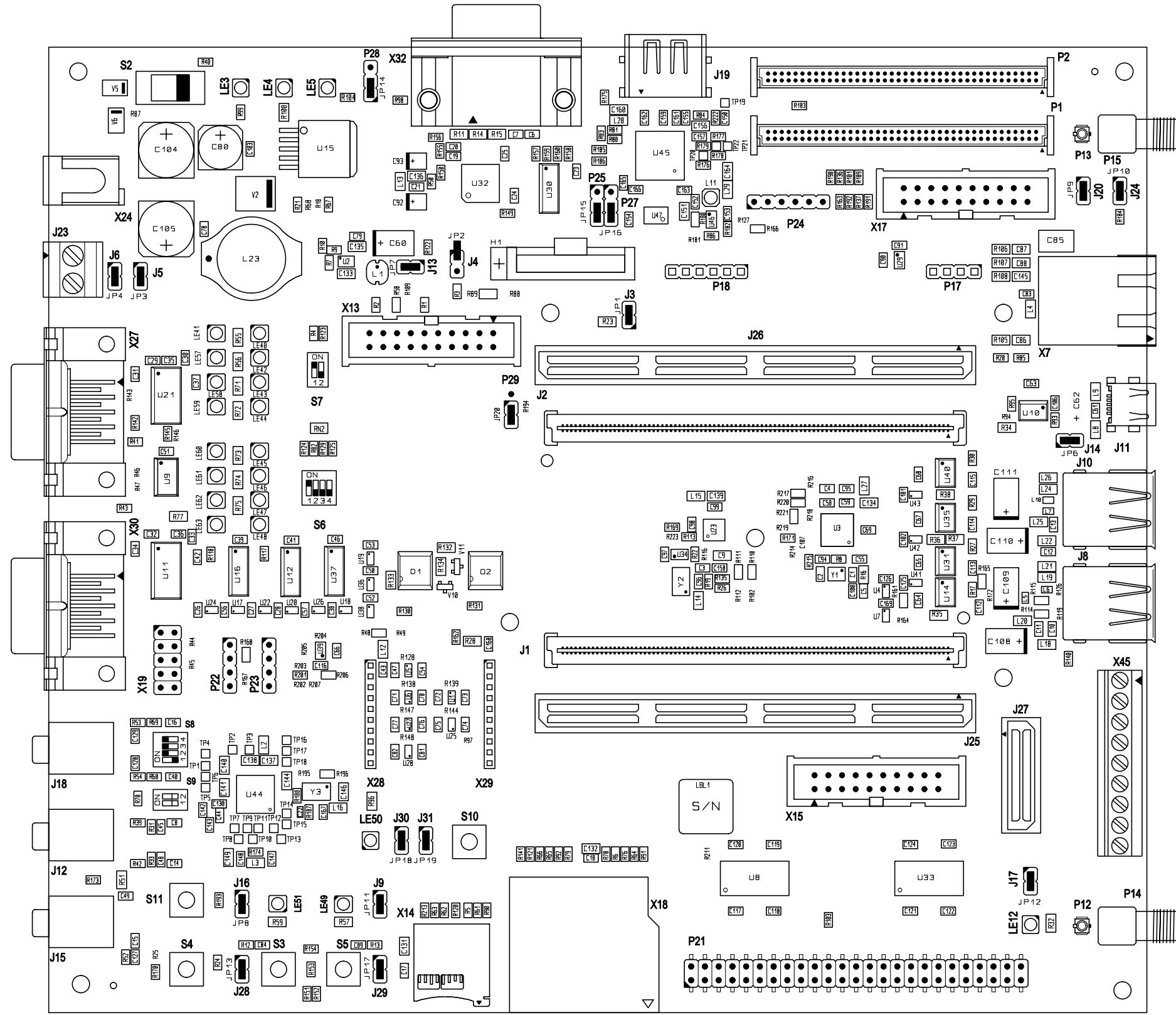



Usable for:				Filename: 3001103x-01_A.scm	
				JSCCWMX51	
				ConnectCore Wi-MX 51 JumpStart Board, 3xUART, XBeec, 4xUSB Host, USB OTG, 2xEthernet, 2xLCDs, 2xCamera, 2xSDIO, HDMI, AUDIO	
		Date	Name	Title:	
		Designer	29.10.2009	HDMI	
		Approved			
		ISO			
1P	NPR000948	04.12.2009	MS	Partnumber:	55001488-01
03	BOM fixes	01.12.2009	MS		
02	Initial Design	30.10.2009	MS		
Rev.	Modification	Date	Name	Provided for:	Provided by:

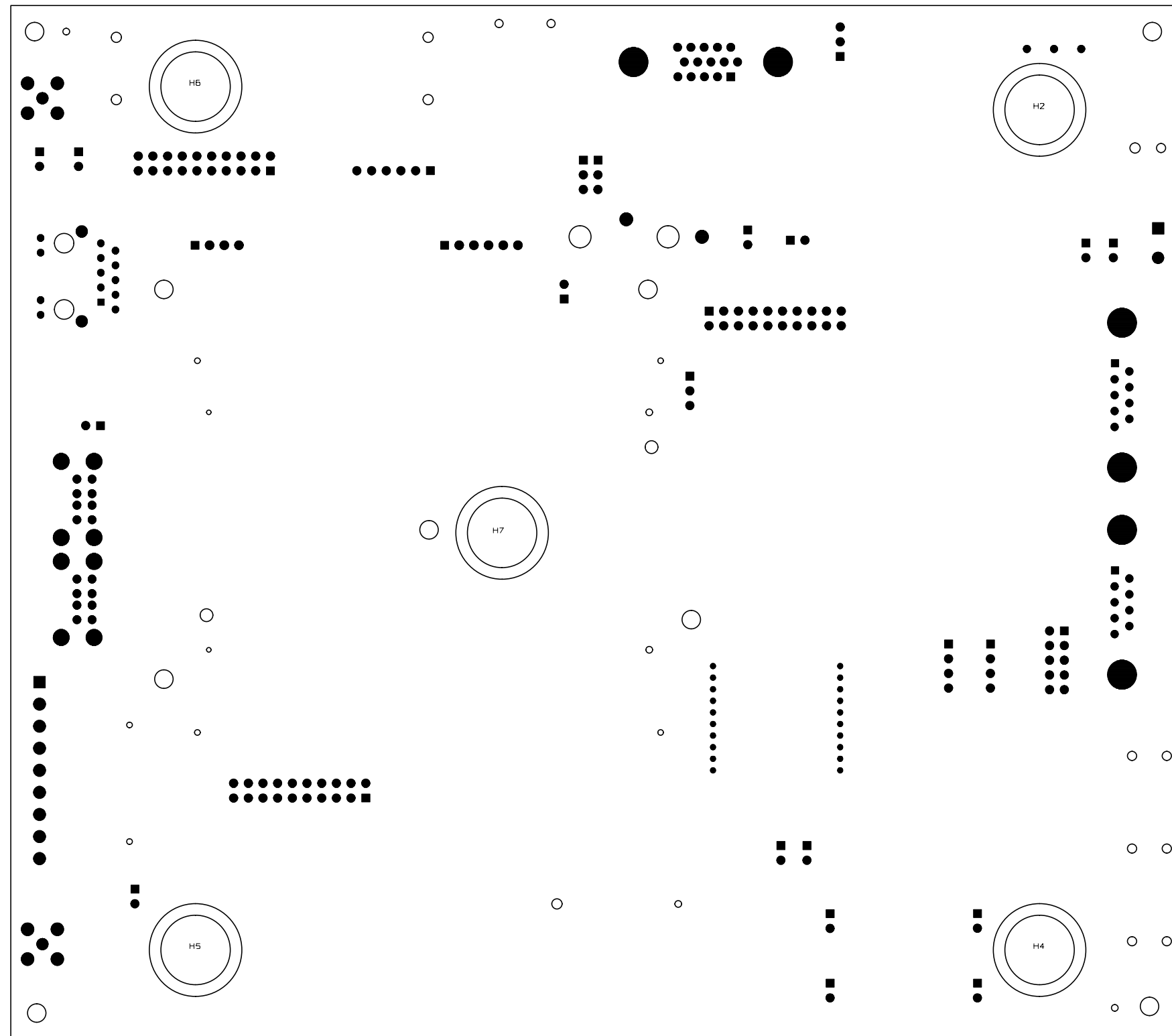


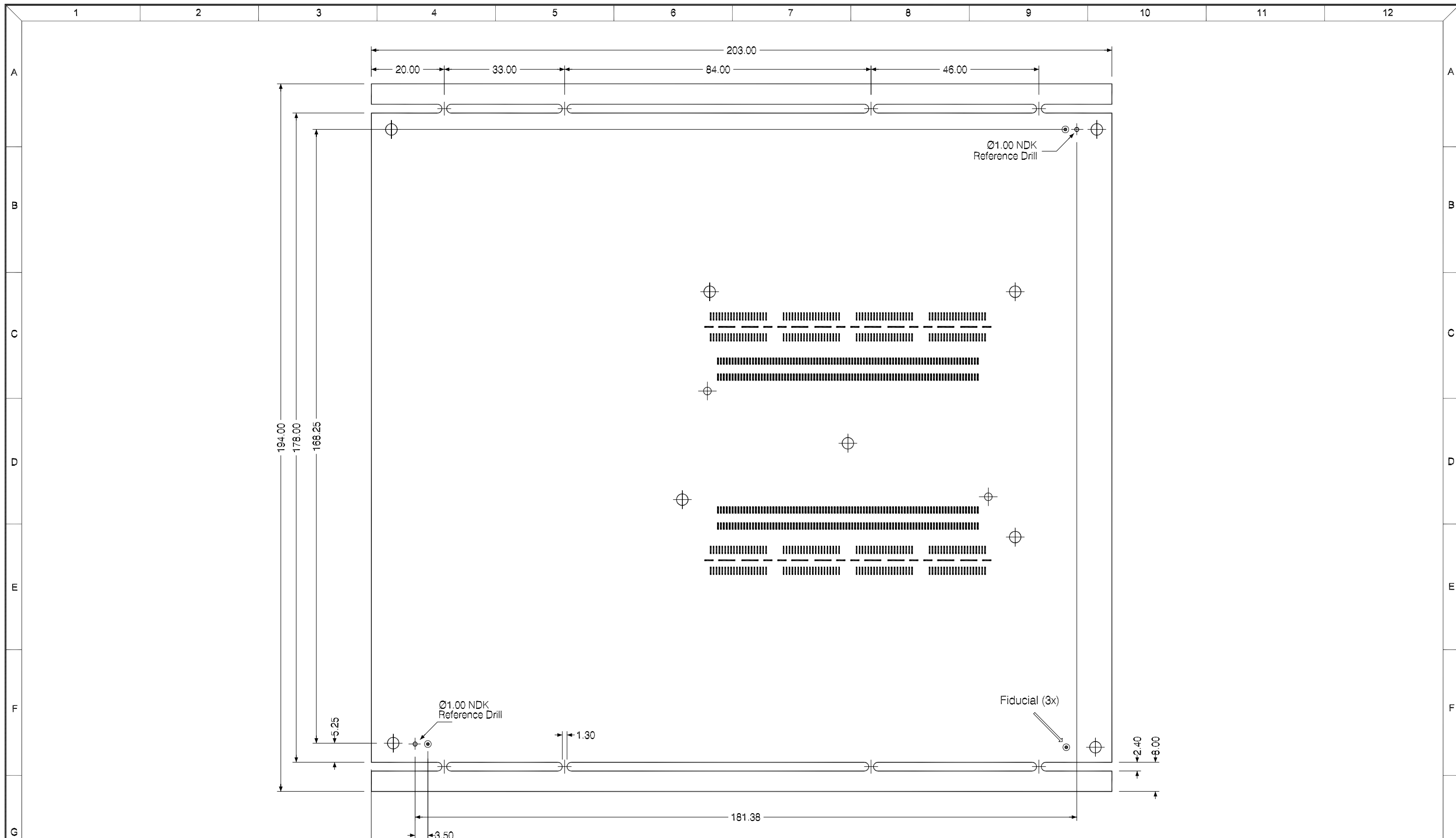


Usable for:				Filename: JSCCMX51.scm	
				<b>JSCCMX5 1</b> <small>ConnectCore Wi-MX 51 JumpStart Board, 3xUART, USB Host, USB OTG, 2xEthernet, 2xLCDs, PCIe Minicard, 2xCameran, PATA, CE-ATA, 2xSDIO</small>	
				<b>Date</b>	<b>Name</b>
				28.07.2009	MS
				<b>Designer</b>	
				<b>Approved</b>	
				<b>ISO</b>	
				<b>System Connector J1</b>	
				<b>Partnumber:</b>	
				5500 1446 - 0 1	
				<b>Sheet</b>	
				2	
				<b>of 13</b>	
<b>Rev.</b>	<b>Modification</b>	<b>Date</b>	<b>Name</b>		
02	Initial Version	28.07.2009	MS		
				<b>Provided for:</b>	
				<b>Provided by:</b>	



Usable for:				Filename: 3001103x-01_C.pcb	
				J SCCWMX5 1 ConnectCore Wi-MX 51 JumpStart Board, 3xUART, XBee, 4xUSB Host, USB OTG, 2xEthernet, 2xLCDs, 2xCamera, 2xSDIO, HDMI, AUDIO	
				Title:	
				Placement TOP Side	
				Partnumber:	
				55001488-01	
				Sheet	
				1	
				of 2	
Rev. Modification Date Name				Provided for: Provided by:	
1P	NPR000948	04.12.09	SC		
03	BOM fixes	01.12.09	SC		
02	Initial design	13.11.09	SC		






**CAUTION:**

- Offset between the reference drills and the fiducials:  $\leq 0,1\text{mm}$ .
- Offset between the milled board outline and the fiducials:  $\pm 0,2\text{mm}$ .
- Plated holes and not plated holes must be drilled in one step!
- Fiducials and not plated holes are already defined in the gerber/drill files!

**BEACHTEN:**

- Versatz der Referenzbohrungen zu den Fiducials:  $\leq 0,1\text{mm}$ .
- Versatz der Fräskontur zu den Fiducials:  $\pm 0,2\text{mm}$ .
- DK- und NDK-Bohrungen in einem Arbeitsgang bohren!
- Fiducials und NDK-Bohrungen sind bereits in den Gerber/Drill-daten vorhanden!

All dimensions in mm. Alle Massangaben in mm. Overall tolerance: $\pm 0,1\text{mm}$ . Allgemeine Toleranz: $\pm 0,1\text{mm}$ .				Scale: 1:1		Filename: 30011032-01_A_PCB.DWG	
				JSCCWMX51			
				Title:		Dimensions TOP	
		Draw.	Date	Name			
		Appr.		SC			
		Stand.					
						Partnumber:	
						30011032-01_A	
						Sheet	
						1	
						of	
						1	
Rev.	Modification	Date	Name	Provided for:		Provided by:	