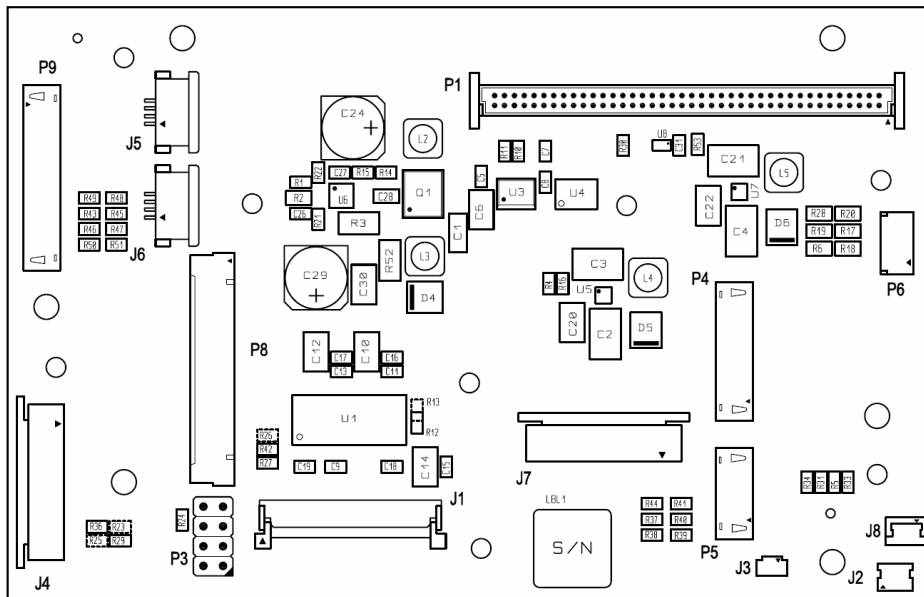


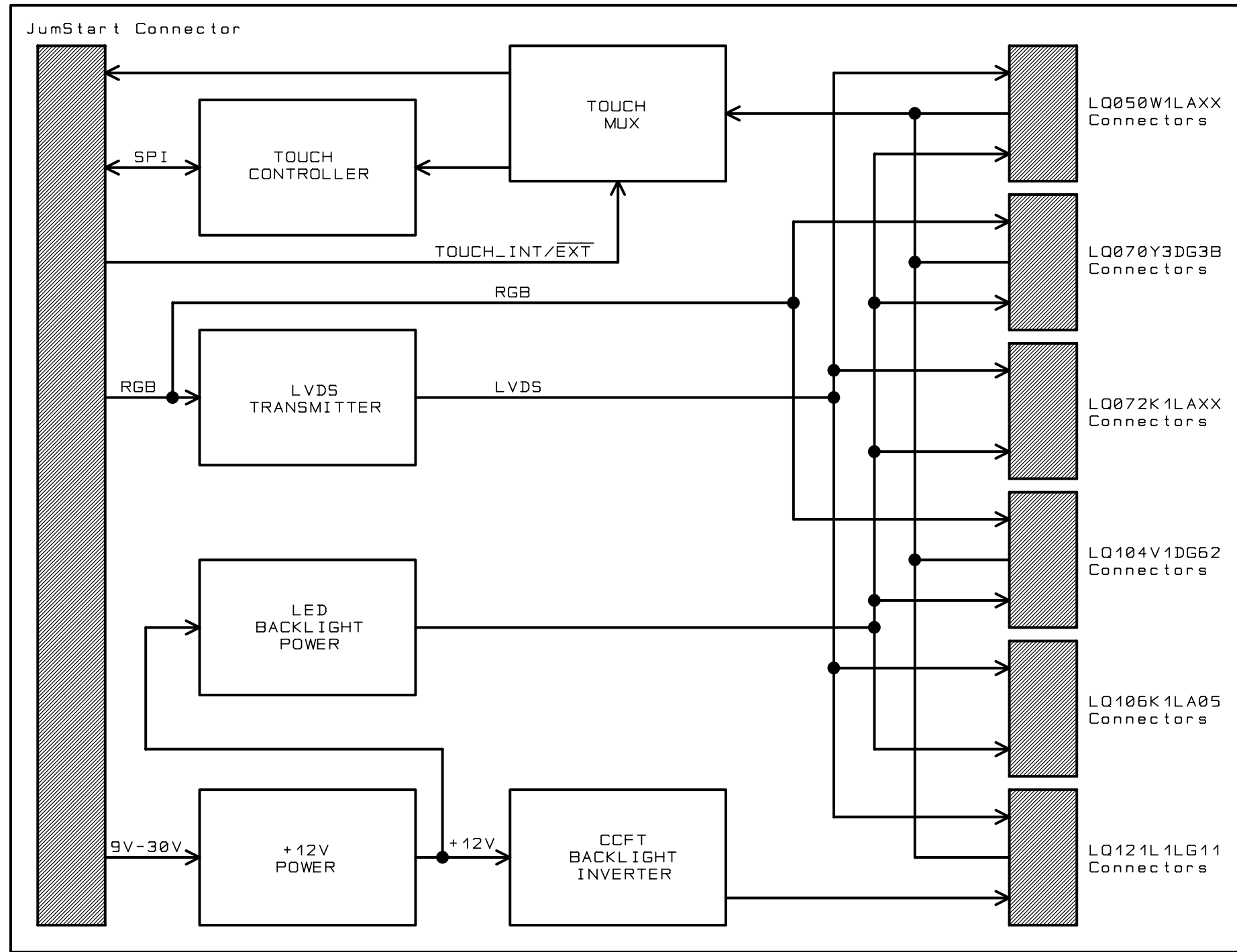


PCA, HR_LCD_APPKIT

55001503-01 RevB



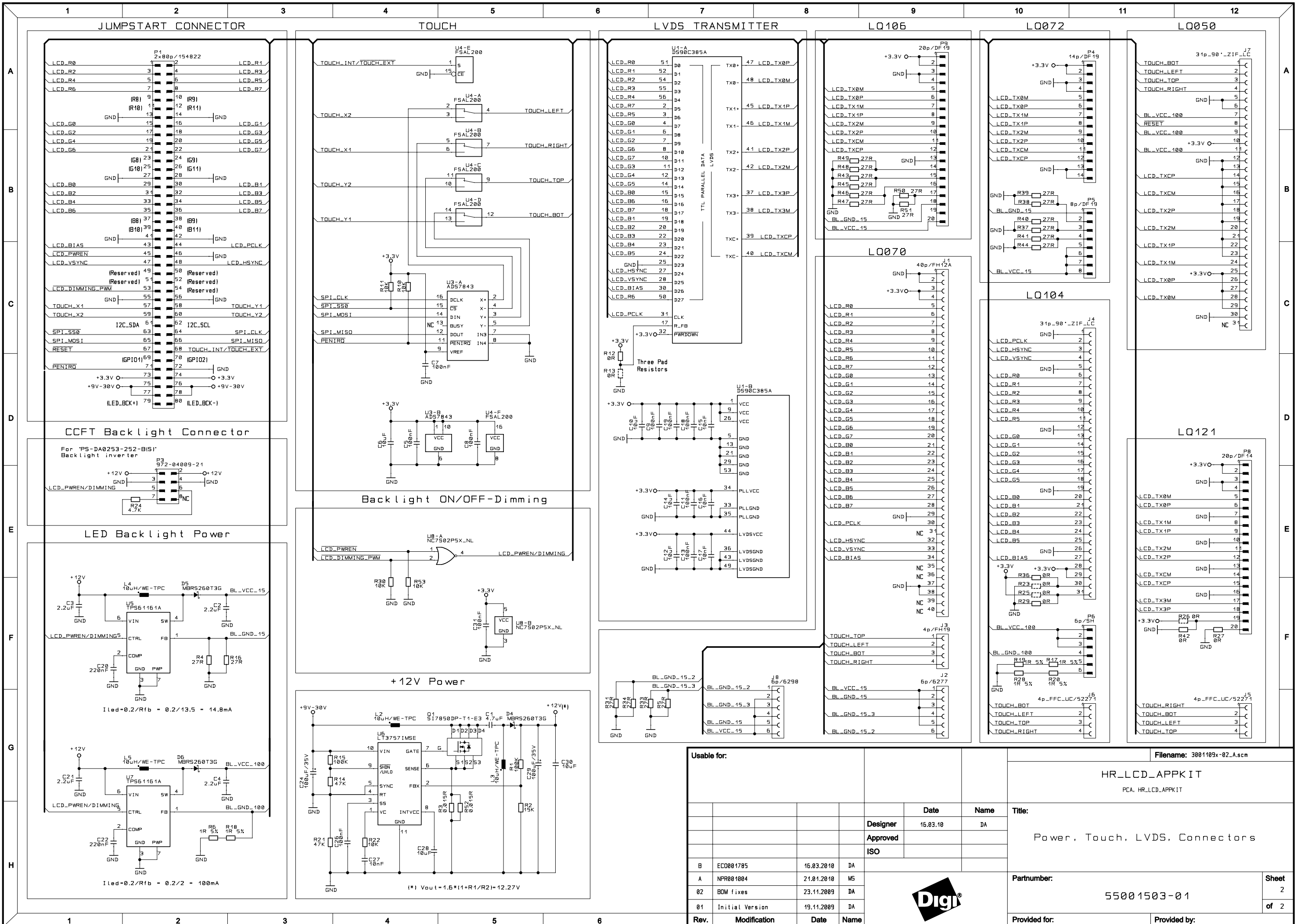
HR_LCD_APPKIT: Block Diagram



All rights reserved © Digil International Inc.

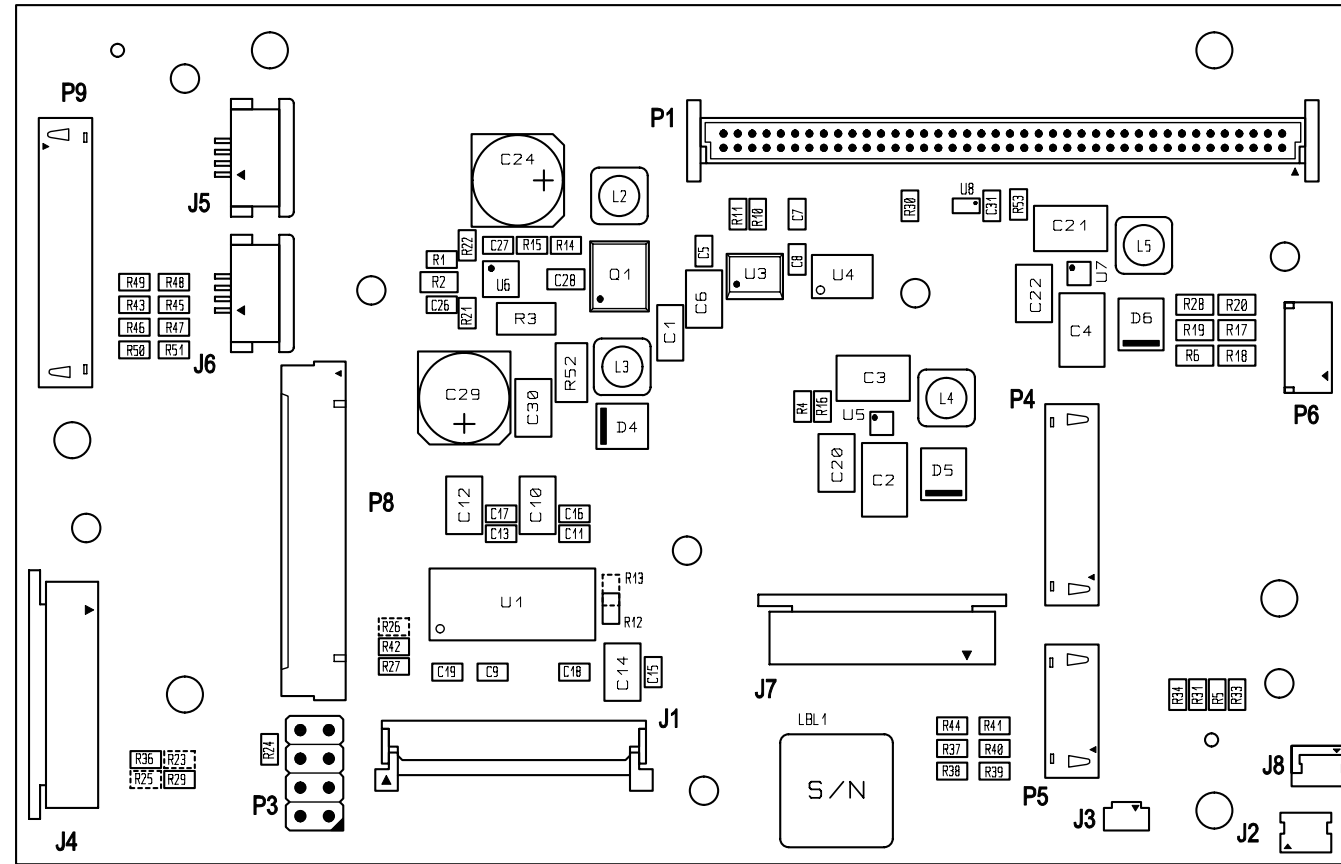
Usable for:						Filename: 3001109x-02_A.scm	
						HR_LCD_APPKIT PCA, HR_LCD_APPKIT	
						Title: Overview	
						Partnumber: 55001503-01	
						Sheet 1 of 2	
						Provided for: Provided by:	
Rev.	Modification	Date	Name	Designer	Date	Name	
B	ECO001785	16.03.2010	DA	DA	16.03.10	DA	
A	NPR001004	21.01.2010	MS				
02	BOM fixes	23.11.2009	DA				
01	Initial Version	19.11.2009	DA				



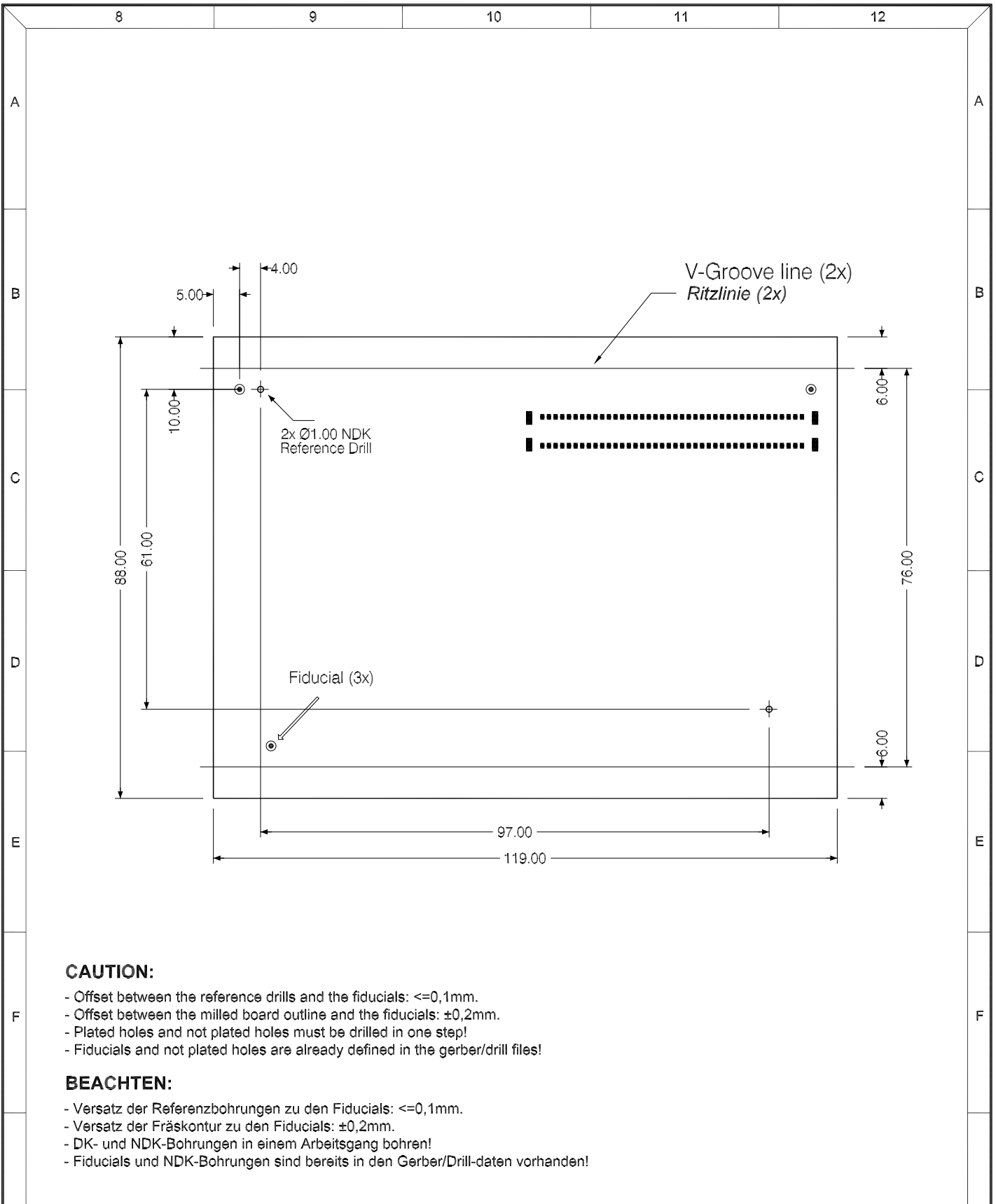


Usable for:				Filename: 3001109x-02_A.scm	
				HR_LCD_APPKIT	
				PCA: HR_LCD_APPKIT	
				Title: Power, Touch, LVDS, Connectors	
				Partnumber: 55001503-01	
				Sheet 2 of 2	
				Provided for: Provided by:	
Rev.	Modification	Date	Name	Designer	Date
B	ECD001785	16.03.2010	DA	DA	16.03.10
A	NPR001004	21.01.2010	MS		
02	BOM fixes	23.11.2009	DA		
01	Initial Version	19.11.2009	DA		





Usable for:							Filename: 3001109x-02_A.pcb		
				HR_LCD_APPKIT PCA, HR_LCD_APPKIT					
				Designer	Date	Name	Placement TOP Side		
				Approved	16.03.10	DA			
				ISO					
B	ECO001785	16.03.10	SC						
A	NPR001004	22.01.10	DA						
02	BOM fixes	23.11.09	DA						
01	Initial Design	19.11.09	DA						
Rev.	Modification	Date	Name						
							Partnumber: 55001503-01		
				Provided for:		Provided by:			
							Sheet 1 of 1		



CAUTION:

- Offset between the reference drills and the fiducials: $\leq 0,1\text{mm}$.
- Offset between the milled board outline and the fiducials: $\pm 0,2\text{mm}$.
- Plated holes and not plated holes must be drilled in one step!
- Fiducials and not plated holes are already defined in the gerber/drill files!

BEACHTEN:

- Versatz der Referenzbohrungen zu den Fiducials: $\leq 0,1\text{mm}$.
- Versatz der Fräskontur zu den Fiducials: $\pm 0,2\text{mm}$.
- DK- und NDK-Bohrungen in einem Arbeitsgang bohren!
- Fiducials und NDK-Bohrungen sind bereits in den Gerber/Drill-daten vorhanden!

All dimensions in mm. Alle Massangaben in mm. Overall tolerance: $\pm 0,1\text{mm}$. Allgemeine Toleranz: $\pm 0,1\text{mm}$.				Scale: 1:1 Filename: 30011092-02_A_PCB.DWG		HR_LCD_APPKIT		
								Title:
Draw.	Date	Name	Partnumber: 30011092-02_A				Sheet 1 of 1	
Appr.	17.03.10	SC						
Stand.								
				Provided for:		Provided by:		
				Rev.	Modification	Date	Name	