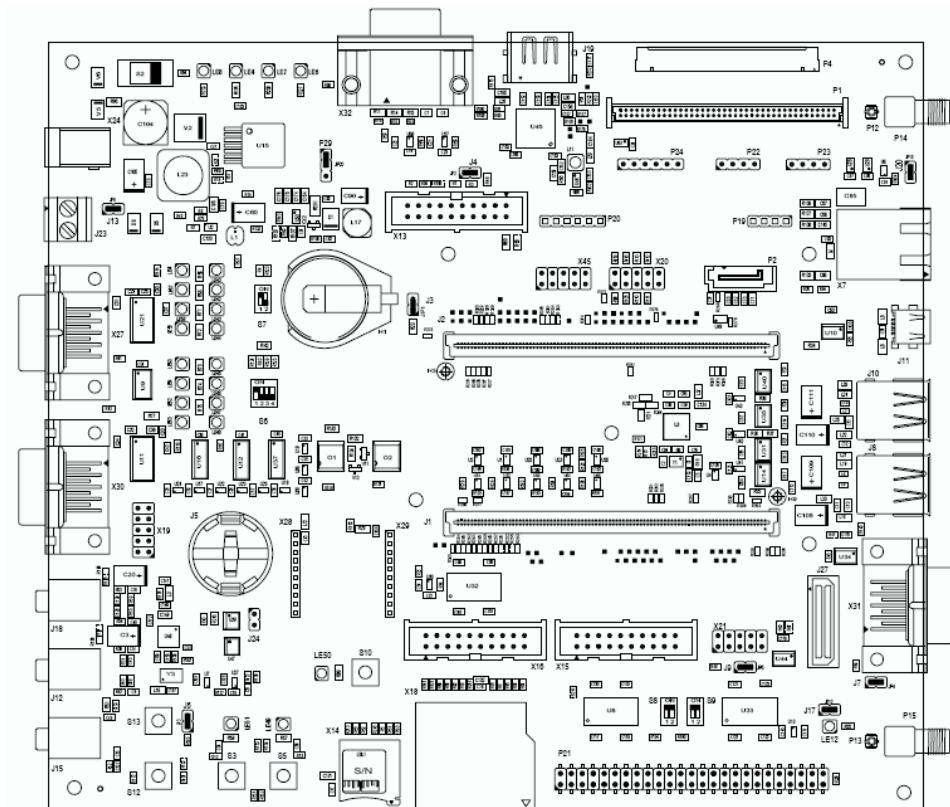


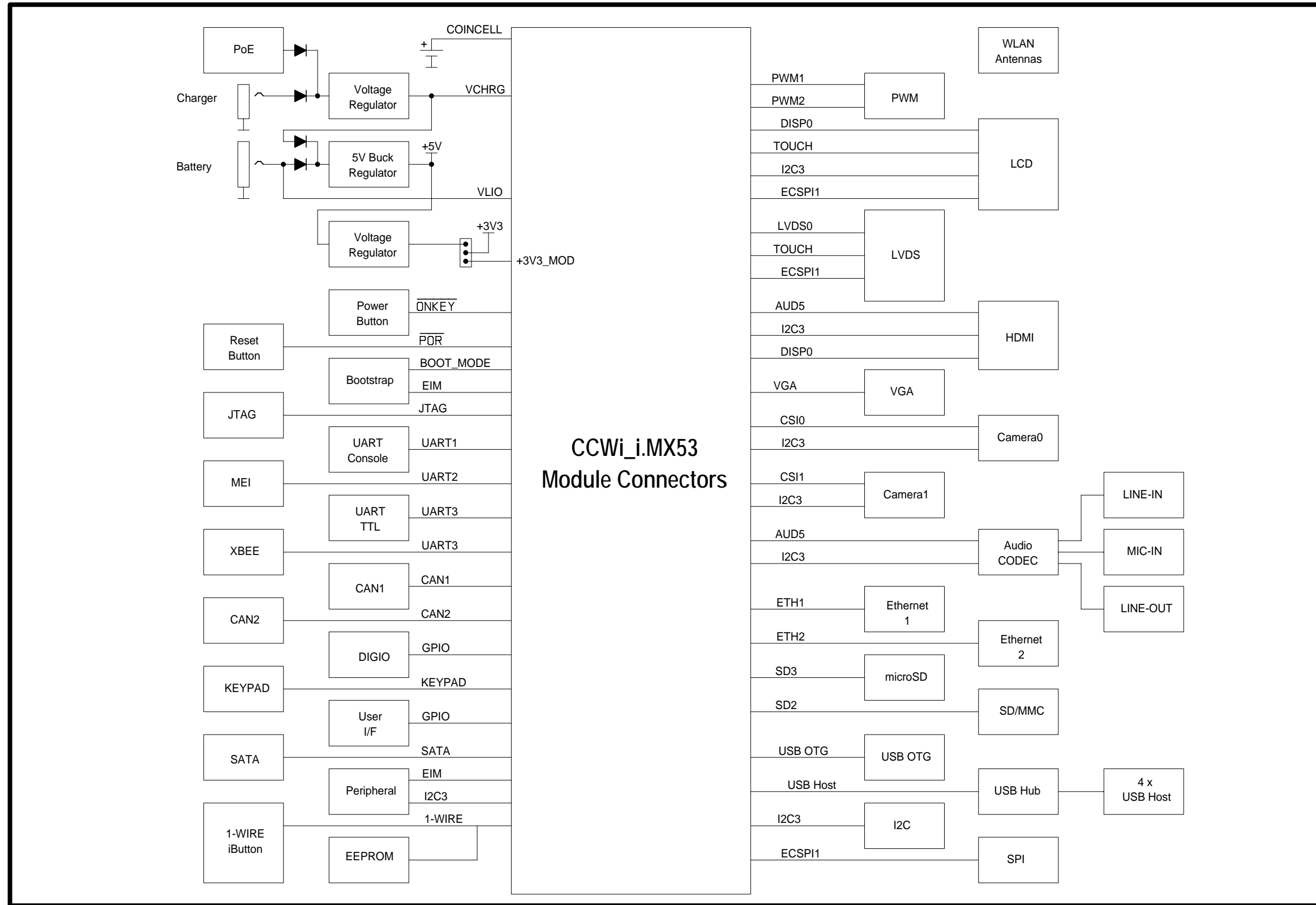


# JumpStart Board for ConnectCore Wi-i.MX 53


55001662-01 Rev01

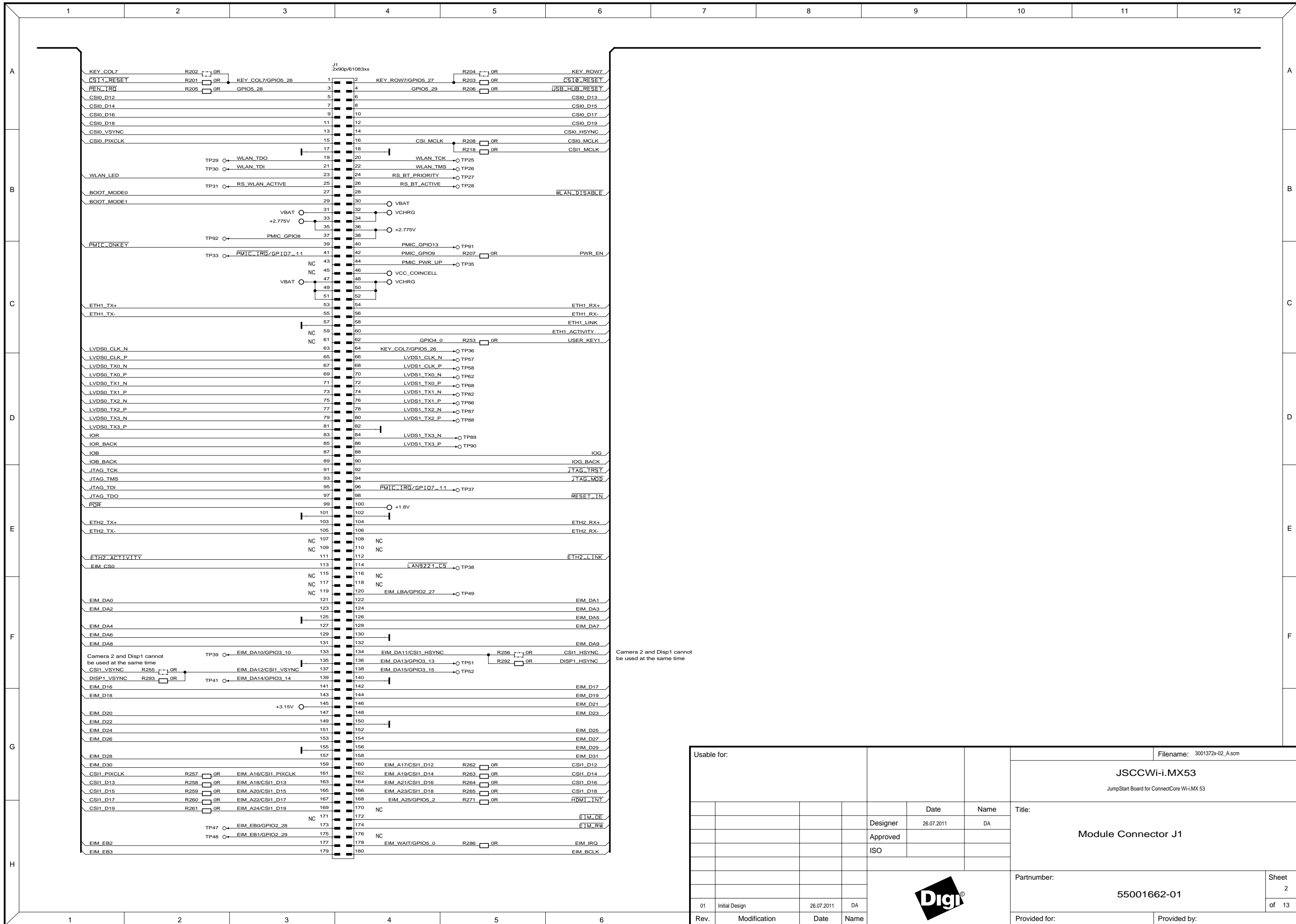


# ConnectCore Wi-i.MX53 JumpStart board



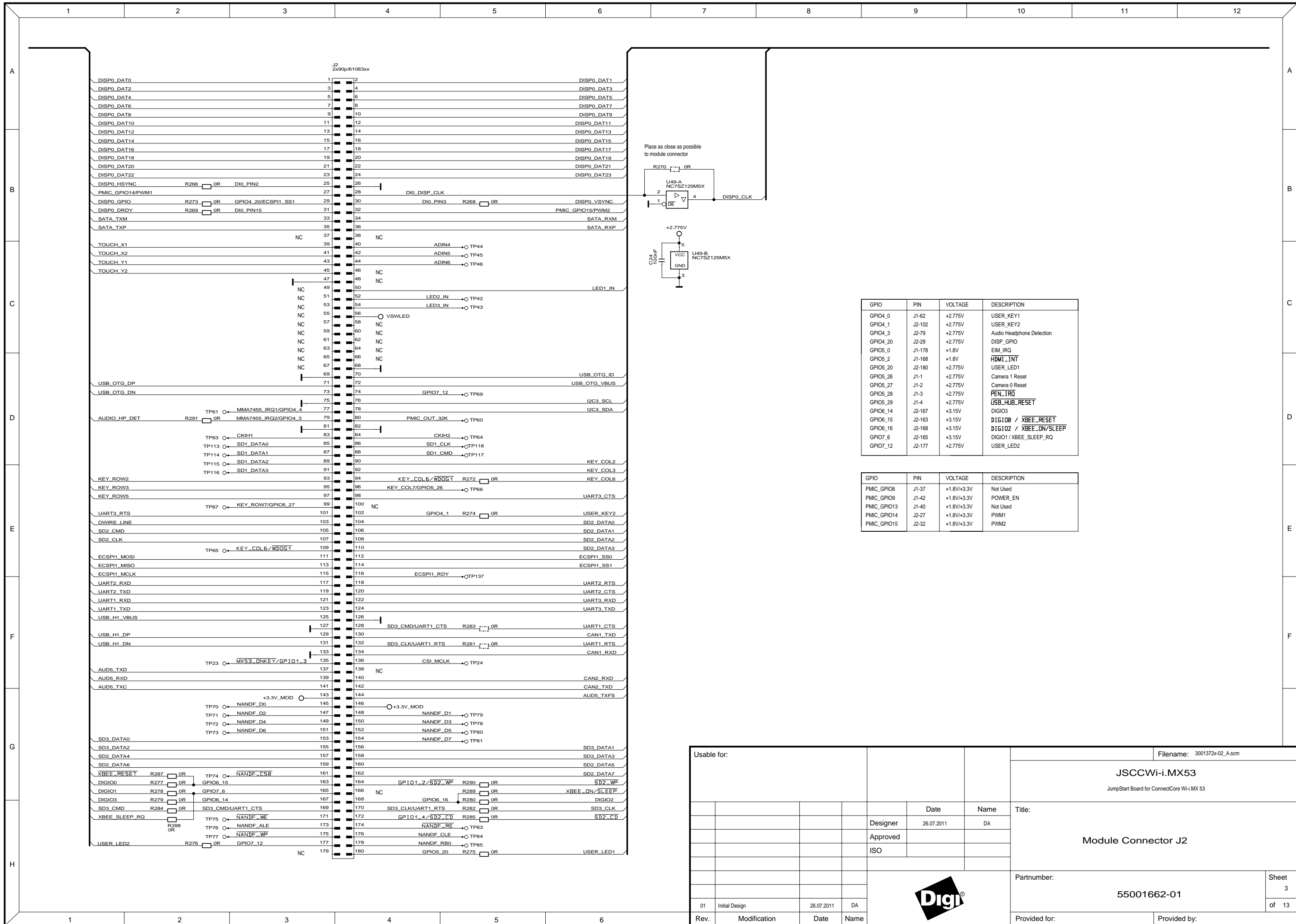
All rights reserved © Digi International Inc.

Usable for:				Filename: 3001372x-02_A.scm		
<b>JSCCW-i.MX53</b> <small>JumpStart Board for ConnectCore Wi-i.MX53</small>						
				Title:		
				Block Diagram		
				Partnumber:		Sheet
				55001662-01		1
				Provided for:		of 13
				Provided by:		
01	Initial Design	26.07.2011	DA			
Rev.	Modification	Date	Name			



Camera 2 and Disp1 cannot be used at the same time

Usable for:				Filename: 3001372x-02_A.scm															
				<b>JSCCW-i.MX53</b>															
				JumpStart Board for ConnectCore Wi-MX 53															
				<b>Module Connector J1</b>															
				Partnumber: <b>55001662-01</b>															
				Sheet <b>2</b> of <b>13</b>															
				Title: <b>Module Connector J1</b>															
				<table border="1"> <thead> <tr> <th>Designer</th> <th>Date</th> <th>Name</th> </tr> </thead> <tbody> <tr> <td>DA</td> <td>26.07.2011</td> <td>DA</td> </tr> <tr> <td>Approved</td> <td></td> <td></td> </tr> <tr> <td>ISO</td> <td></td> <td></td> </tr> </tbody> </table>				Designer	Date	Name	DA	26.07.2011	DA	Approved			ISO		
Designer	Date	Name																	
DA	26.07.2011	DA																	
Approved																			
ISO																			
				<table border="1"> <thead> <tr> <th>Rev.</th> <th>Modification</th> <th>Date</th> <th>Name</th> </tr> </thead> <tbody> <tr> <td>01</td> <td>Initial Design</td> <td>26.07.2011</td> <td>DA</td> </tr> </tbody> </table>				Rev.	Modification	Date	Name	01	Initial Design	26.07.2011	DA				
Rev.	Modification	Date	Name																
01	Initial Design	26.07.2011	DA																
				<table border="1"> <tr> <td>Provided for:</td> <td>Provided by:</td> </tr> </table>				Provided for:	Provided by:										
Provided for:	Provided by:																		

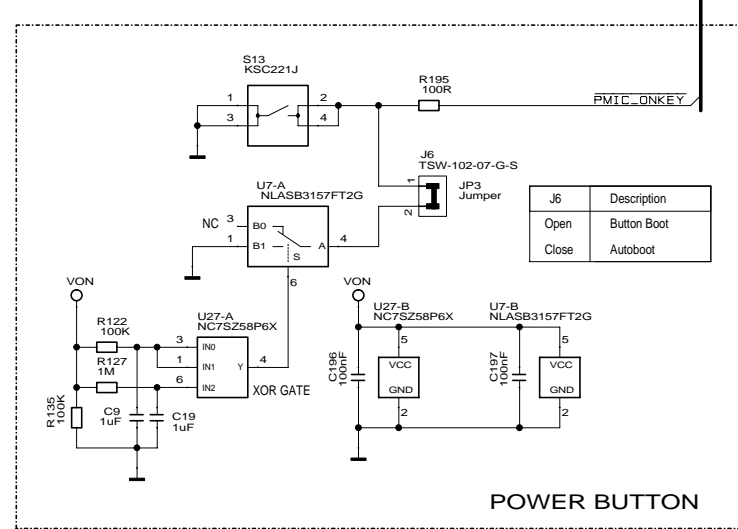
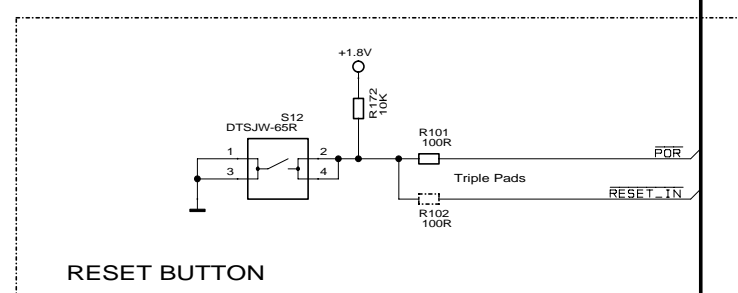
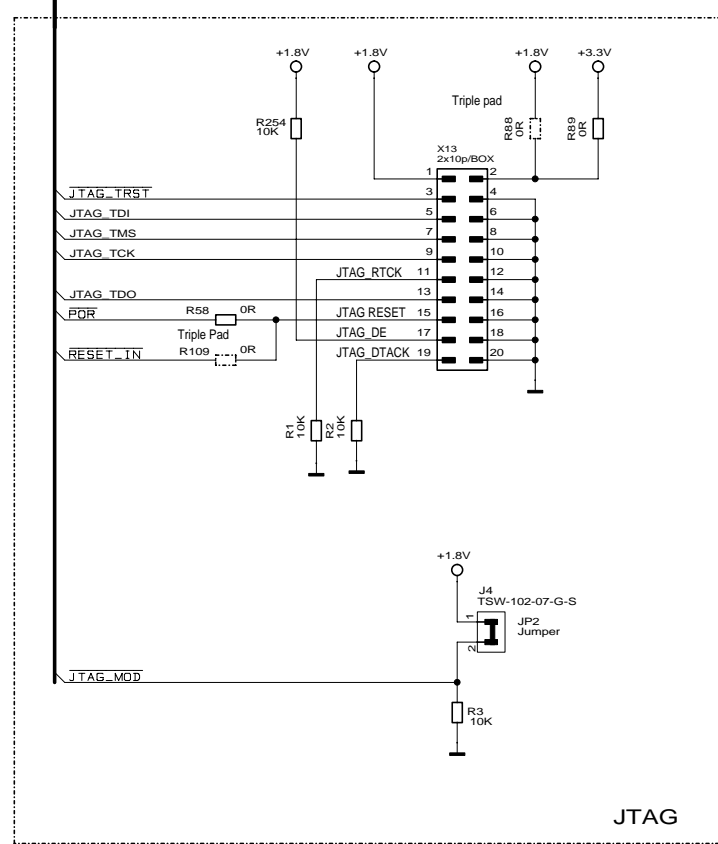
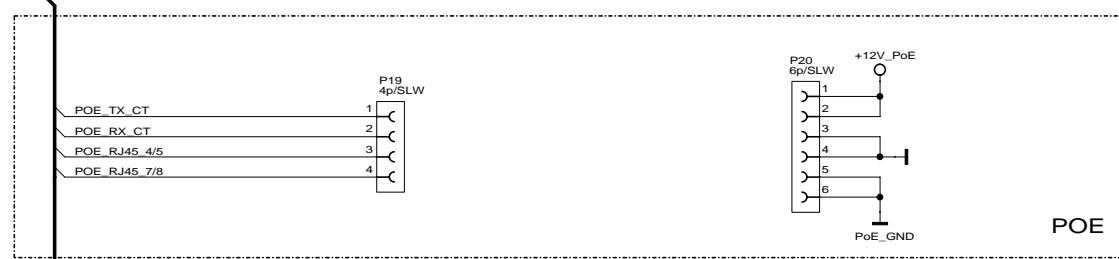
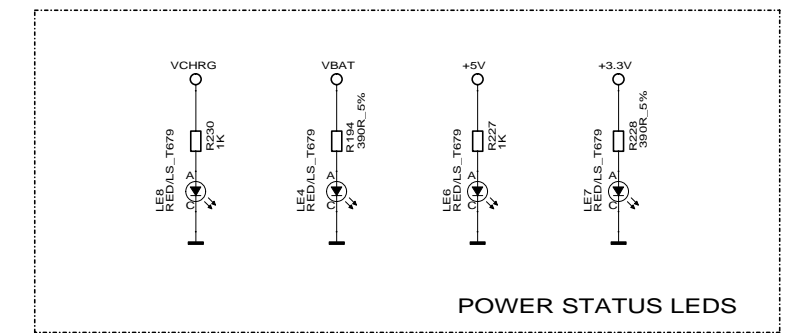
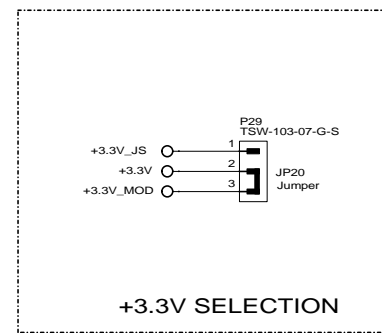
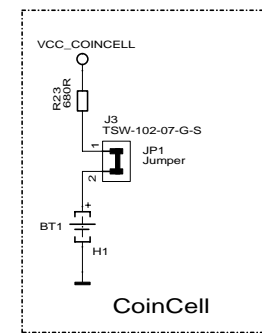
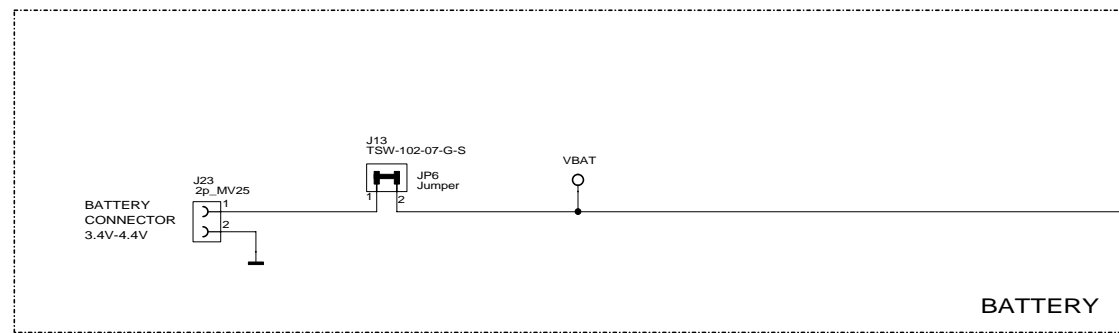
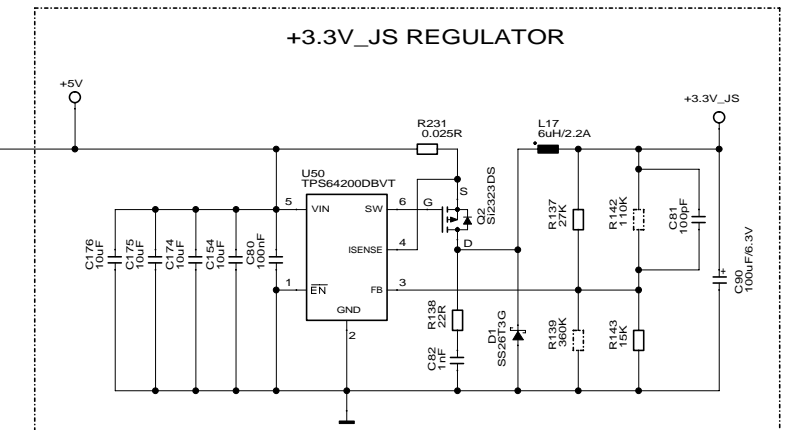
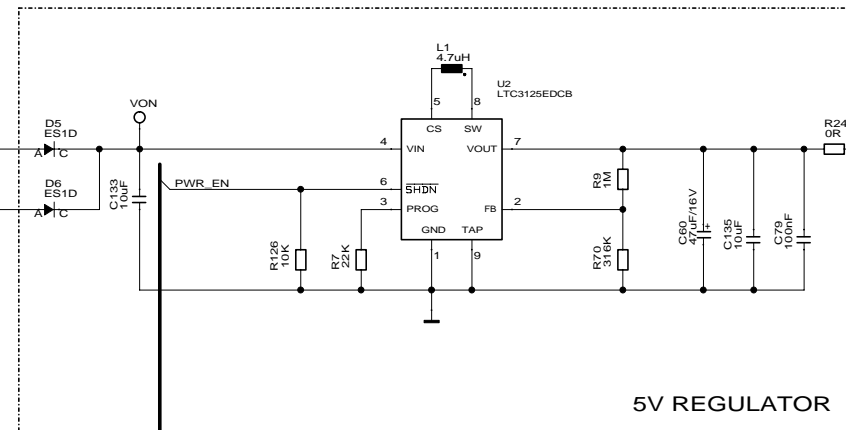
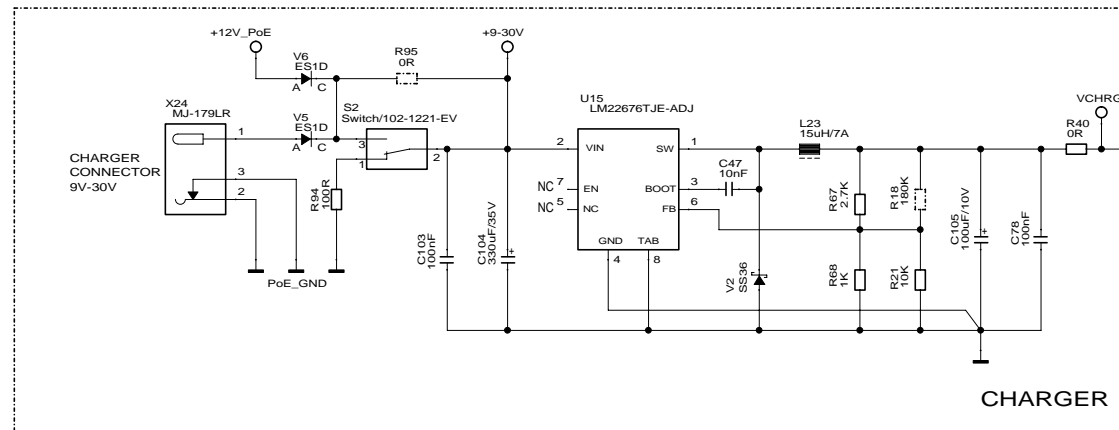


GPIO	PIN	VOLTAGE	DESCRIPTION
GPIO4_0	J1-62	+2.775V	USER_KEY1
GPIO4_1	J2-102	+2.775V	USER_KEY2
GPIO4_3	J2-79	+2.775V	Audio Headphone Detection
GPIO4_20	J2-29	+2.775V	DISP_GPIO
GPIO5_0	J1-178	+1.8V	EIM_IRQ
GPIO5_2	J1-168	+1.8V	HDMI_INT
GPIO5_20	J2-180	+2.775V	USER_LED1
GPIO5_26	J1-1	+2.775V	Camera 1 Reset
GPIO5_27	J1-2	+2.775V	Camera 0 Reset
GPIO5_28	J1-3	+2.775V	PEN_TRQ
GPIO5_29	J1-4	+2.775V	USB_HUB_RESET
GPIO6_14	J2-167	+3.15V	DIGIO3
GPIO6_15	J2-163	+3.15V	DIGIO0 / XBEE_RESET
GPIO6_16	J2-168	+3.15V	DIGIO2 / XBEE_ON/SLEEP
GPIO7_6	J2-165	+3.15V	DIGIO1 / XBEE_SLEEP_RQ
GPIO7_12	J2-177	+2.775V	USER_LED2

GPIO	PIN	VOLTAGE	DESCRIPTION
PMIC_GPIO8	J1-37	+1.8V/+3.3V	Not Used
PMIC_GPIO9	J1-42	+1.8V/+3.3V	POWER_EN
PMIC_GPIO13	J1-40	+1.8V/+3.3V	Not Used
PMIC_GPIO14	J2-27	+1.8V/+3.3V	PWM1
PMIC_GPIO15	J2-32	+1.8V/+3.3V	PWM2

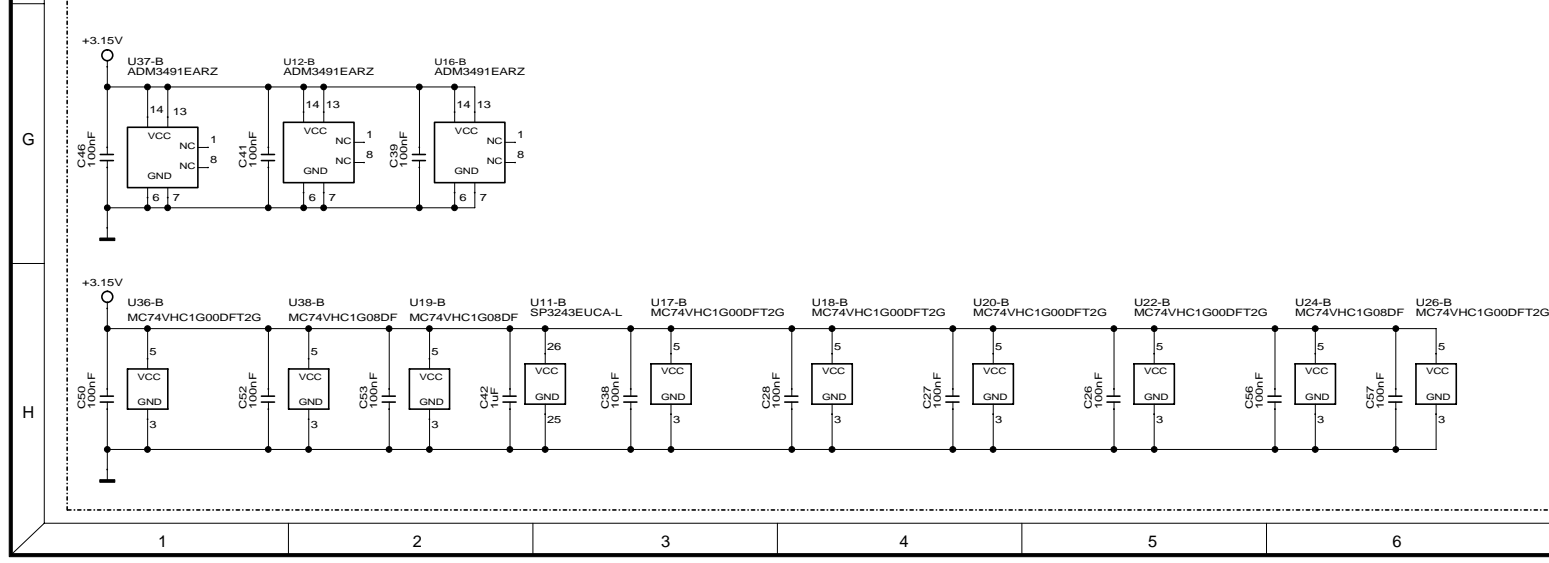
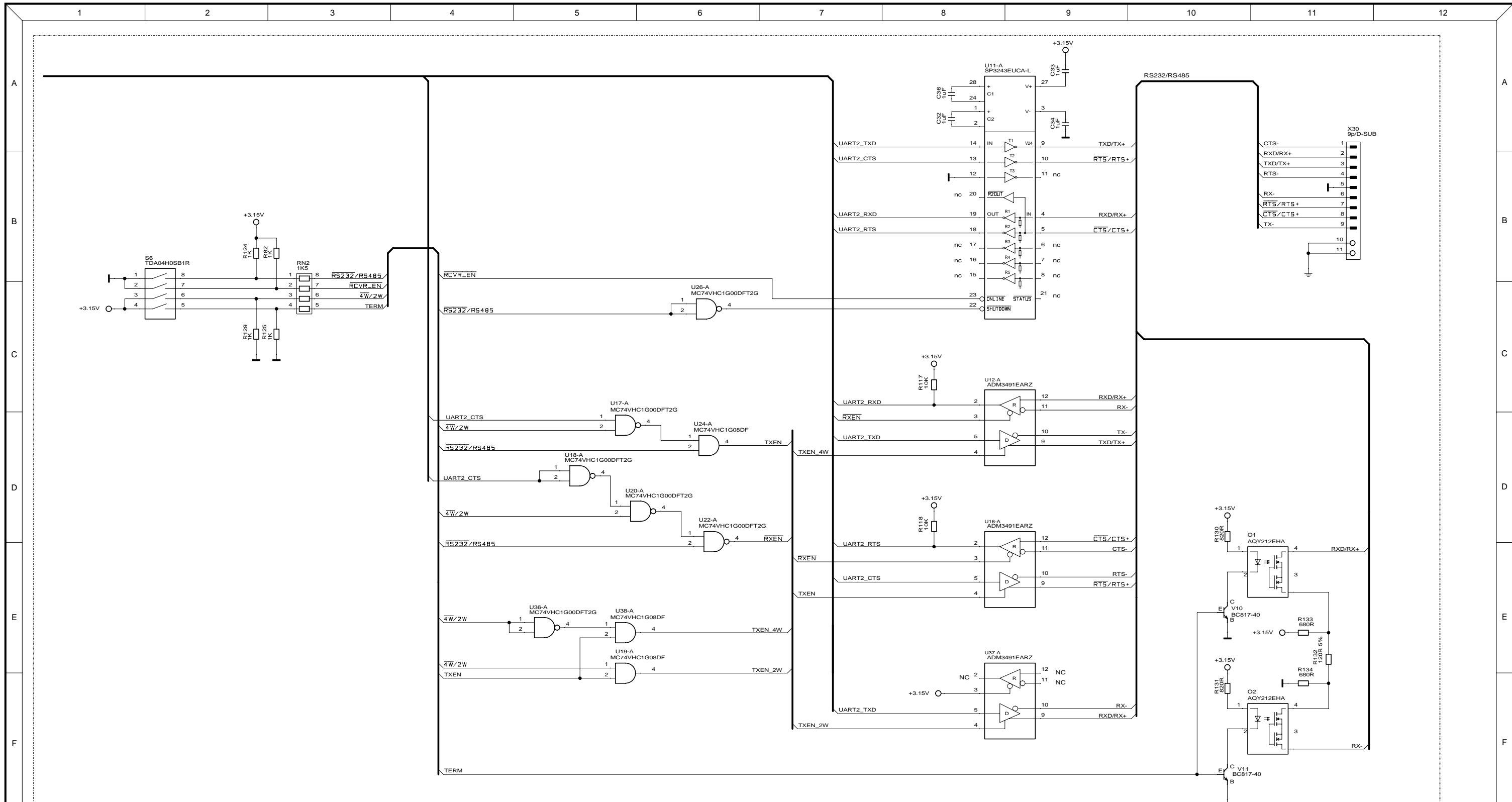
Usable for:				File name: 3001372x-02_A.scm	
<b>JSCCW-i.MX53</b>				JumpStart Board for ConnectCore Wi-MX 53	
Title:		<b>Module Connector J2</b>		Partnumber:	
		<b>55001662-01</b>		Sheet	
				3	
				of 13	
01	Initial Design	26.07.2011	DA		
Rev.	Modification	Date	Name		





Usable for:				File name: 3001372x-02_A.scm	
				<b>JSCCW-i.MX53</b>	
				JumpStart Board for ConnectCore Wi-MX 53	
Title:		Date		Name	
Power supply, PoE, Coincell, Power button, Reset Button, JTAG		26.07.2011		DA	
Designer		Approved		ISO	
Partnumber:		55001662-01		Sheet 4 of 13	
Rev.		Modification		Date	
01		Initial Design		26.07.2011	
Rev.		Modification		Date	

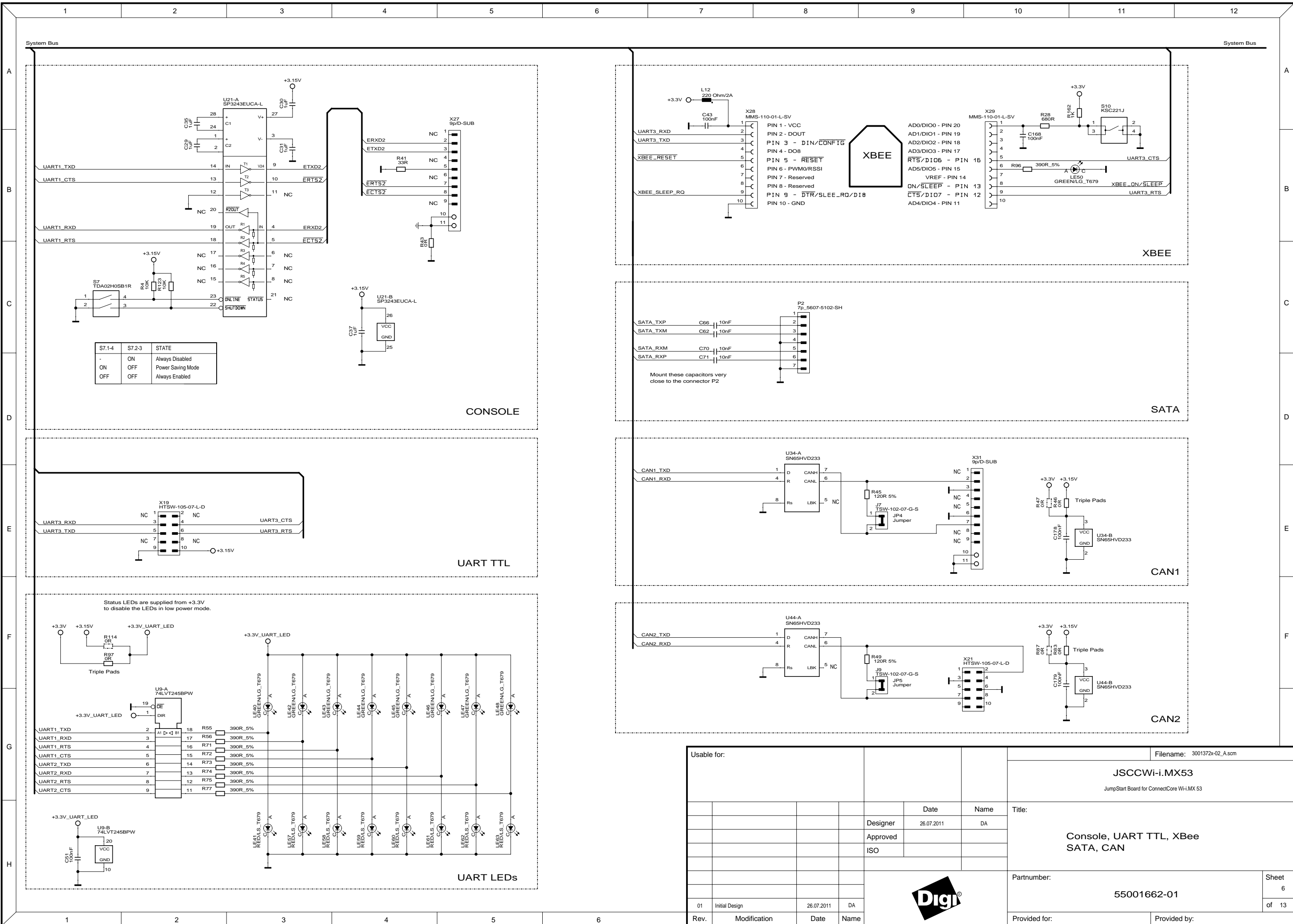




Usable for:				File name: 3001372-02_A.scm	
				JSCCW-i.MX53 JumpStart Board for ConnectCore Wi-MX 53	
				MEI	
				Part number: 55001662-01	
				Sheet 5 of 13	
				Title: MEI	
				Designer: 26.07.2011 DA	
				Approved: ISO	
				Date: 26.07.2011	
				Name: DA	
				Rev. 01 Initial Design	
				Rev. Modification	
				Rev. Date	
				Rev. Name	
				Provided for:	
				Provided by:	



All rights reserved © Digi International Inc.

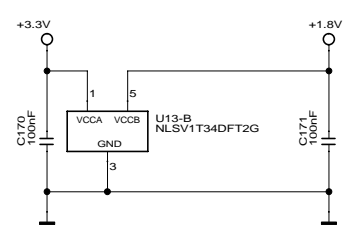
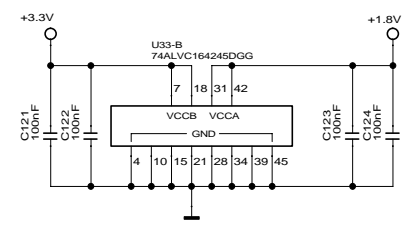
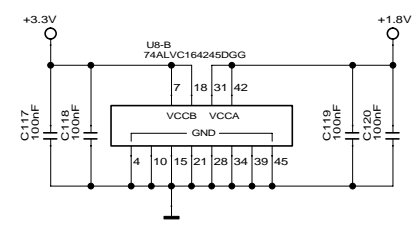
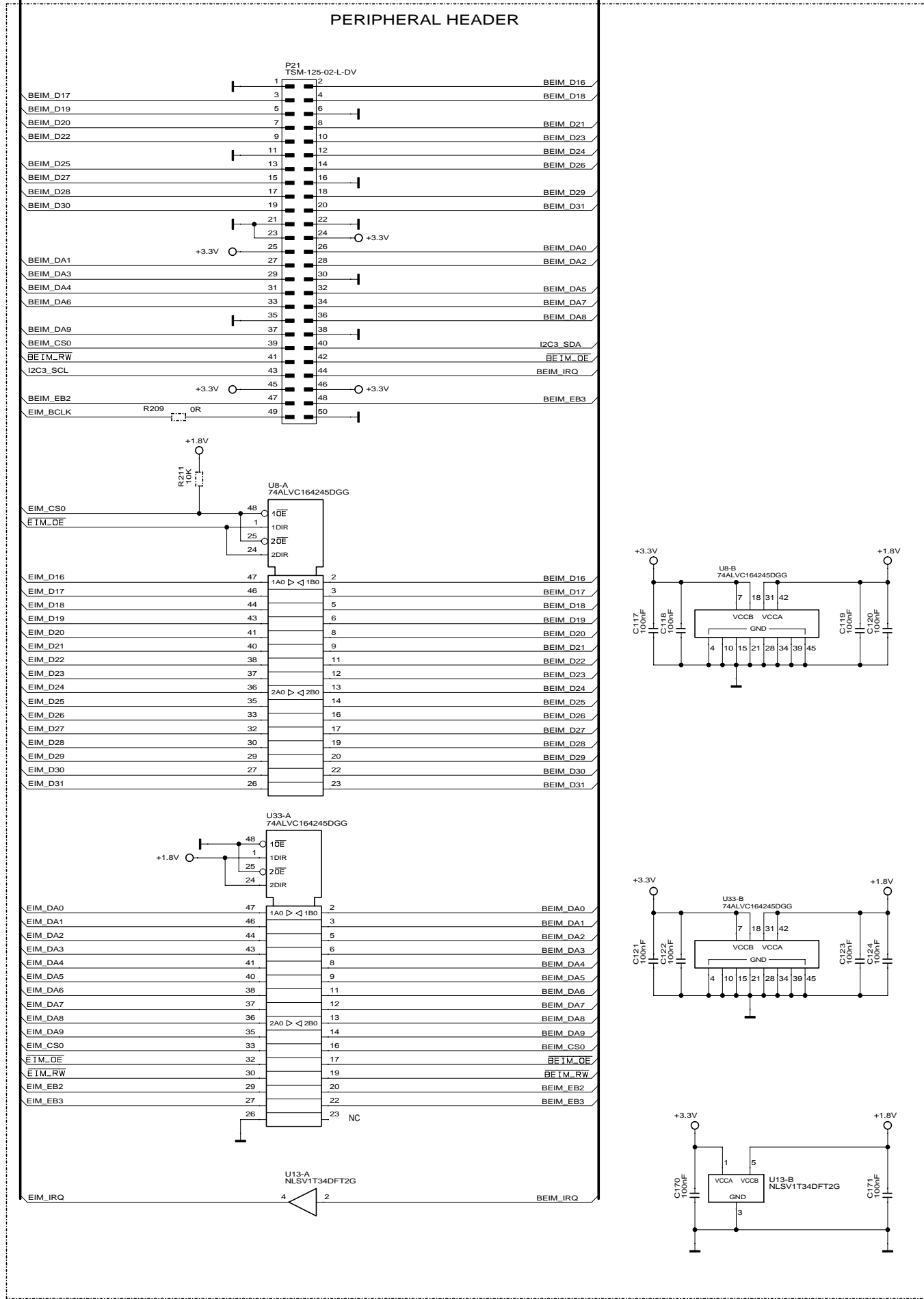


S7.1-4	S7.2-3	STATE
-	ON	Always Disabled
ON	OFF	Power Saving Mode
OFF	OFF	Always Enabled

Usable for:				File name: 3001372x-02_A.scm	
				<b>JSCCW-i.MX53</b> JumpStart Board for ConnectCore Wi-MX 53	
		Date	Name	Title:	
		26.07.2011	DA	<b>Console, UART TTL, Xbee          SATA, CAN</b>	
		Designer			
		Approved			
		ISO		Partnumber:	
				55001662-01	
				Sheet	
				6	
				of 13	
01	Initial Design	26.07.2011	DA	Provided for:	
Rev.	Modification	Date	Name	Provided by:	

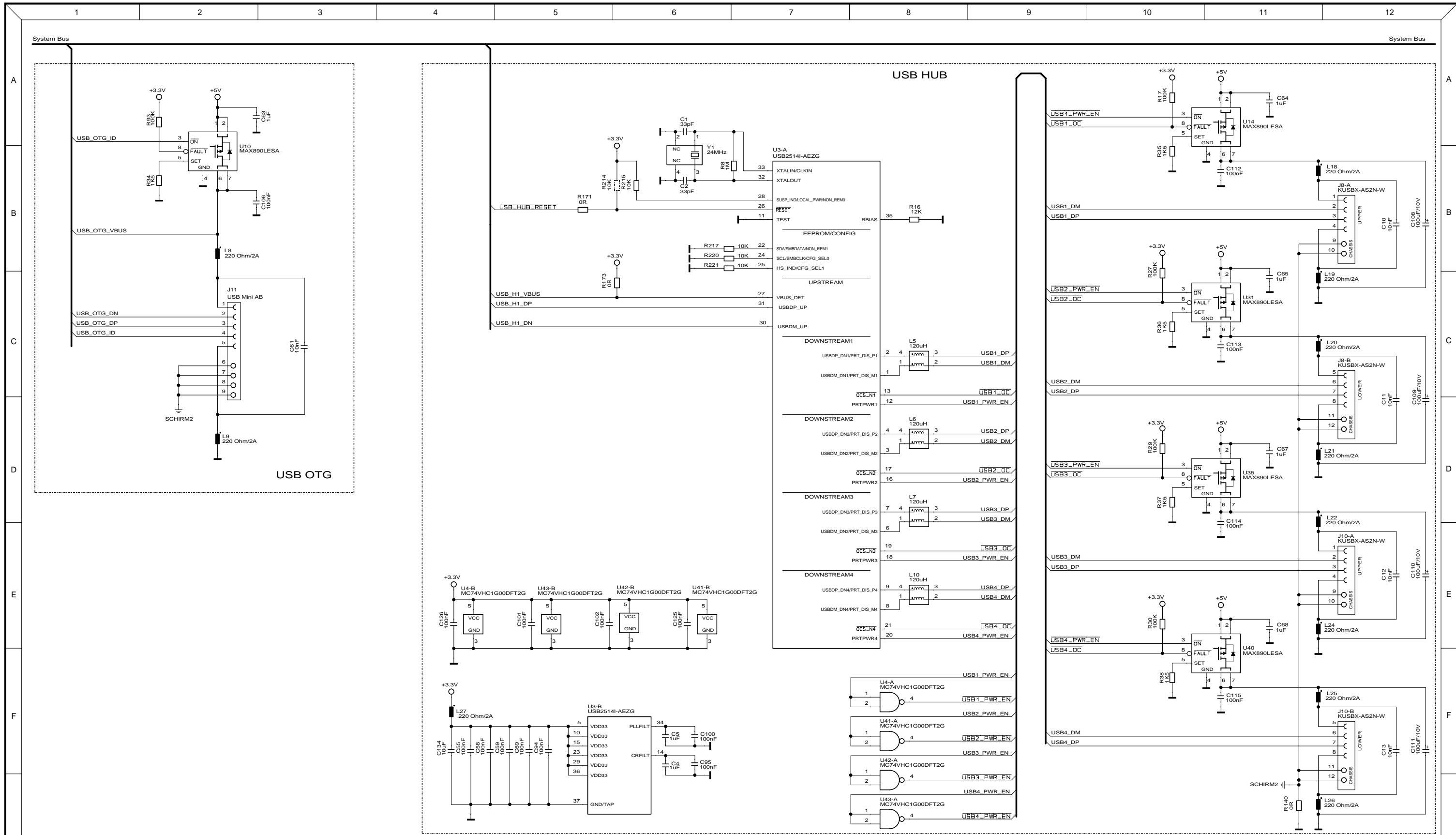






Usable for:				Filename: 3001372x-02_A.scm	
				JSCCW-i.MX53	
				JumpStart Board for ConnectCore Wi-MX 53	
		Date	Name	Title:	
		Designer	26.07.2011	Peripheral Header, Ethernet 1	
		Approved			
		ISO			
				Partnumber:	Sheet
				55001662-01	8
				Provided for:	of 13
01	Initial Design	26.07.2011	DA		
Rev.	Modification	Date	Name		





Usable for:				Date		Name		Title:		Partnumber:		Sheet	
				26.07.2011		DA		JSCCW-i.MX53		55001662-01		9	
				Approved				JSCCW-i.MX53		55001662-01		of 13	
				ISO				USB OTG, USB HUB		55001662-01			
01 Initial Design				26.07.2011		DA				55001662-01			
Rev.				Modification		Date		Name		Provided for:		Provided by:	



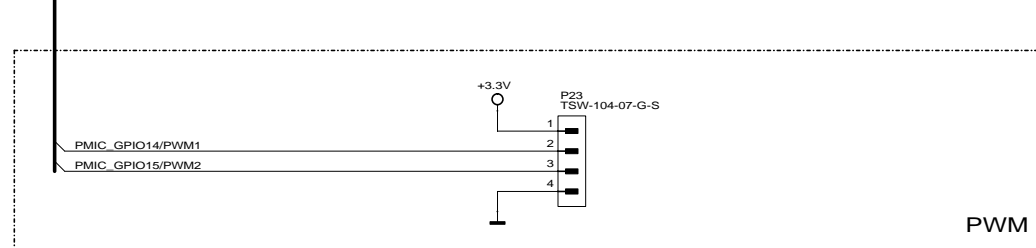
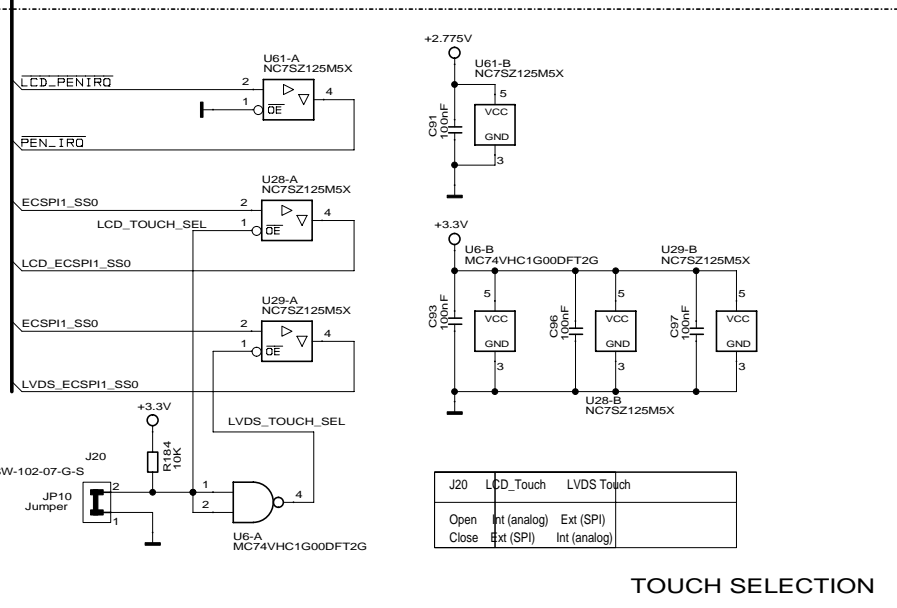
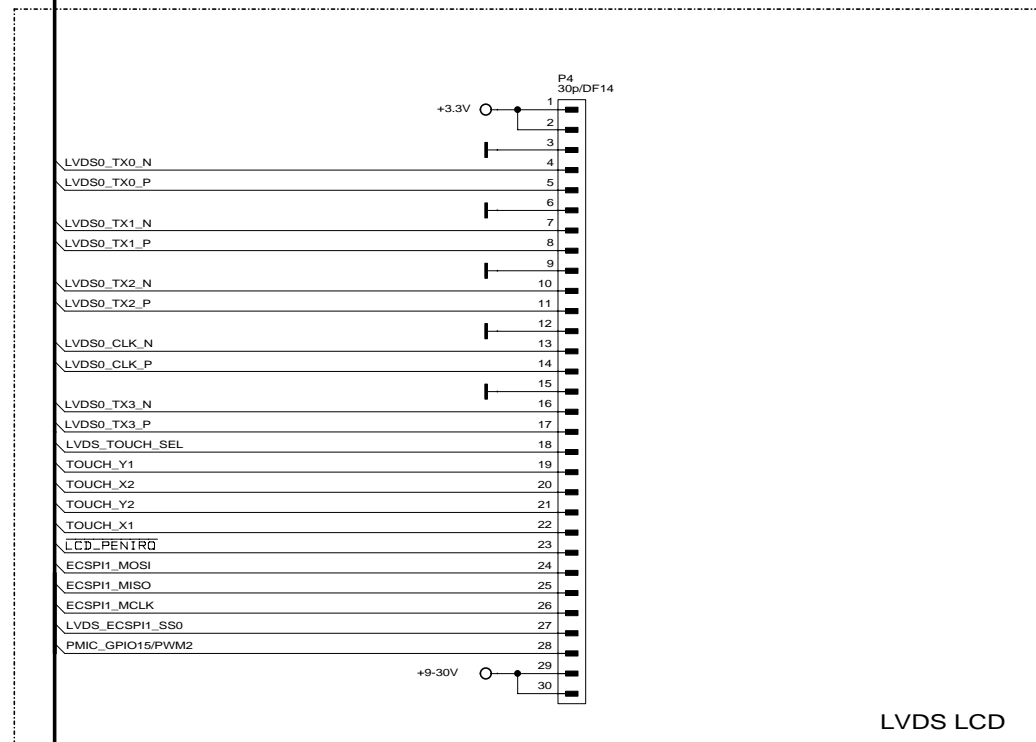
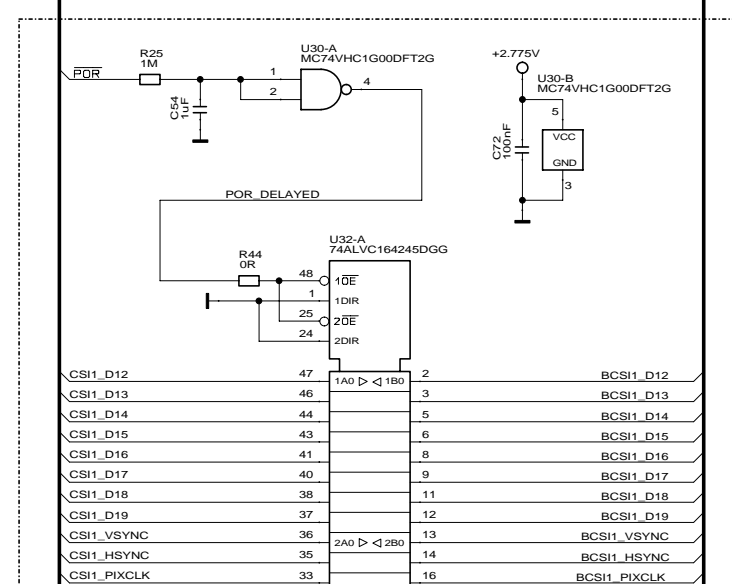
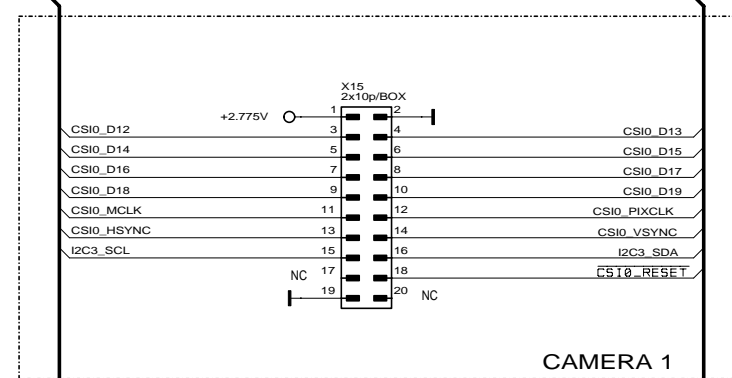
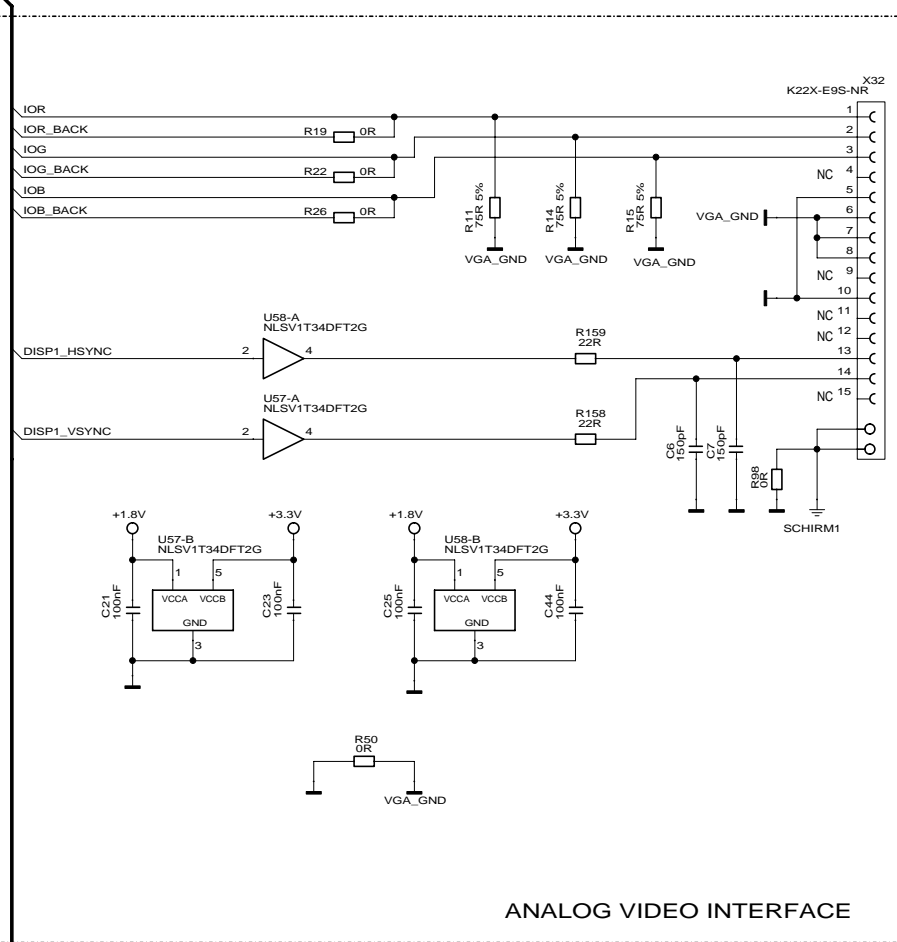
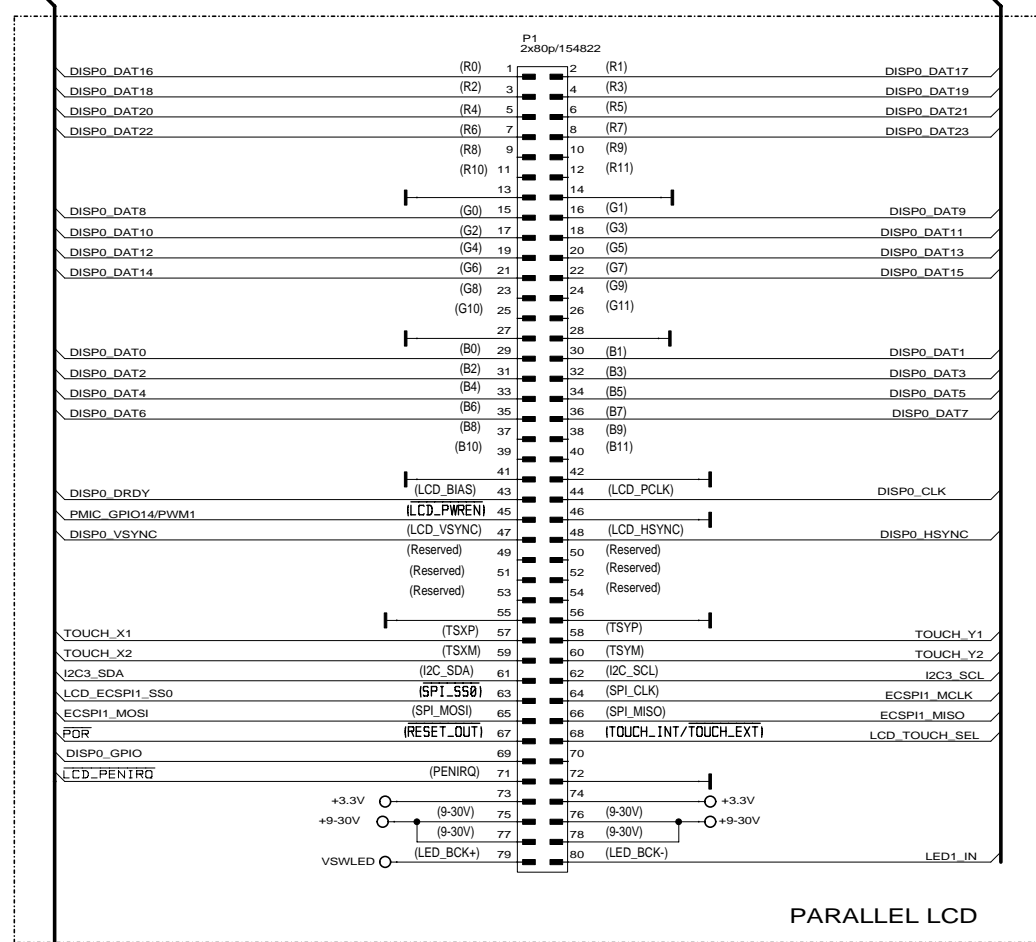
Filename: 3001372x-02\_A.scm

JSCCW-i.MX53

JumpStart Board for ConnectCore Wi-MX 53

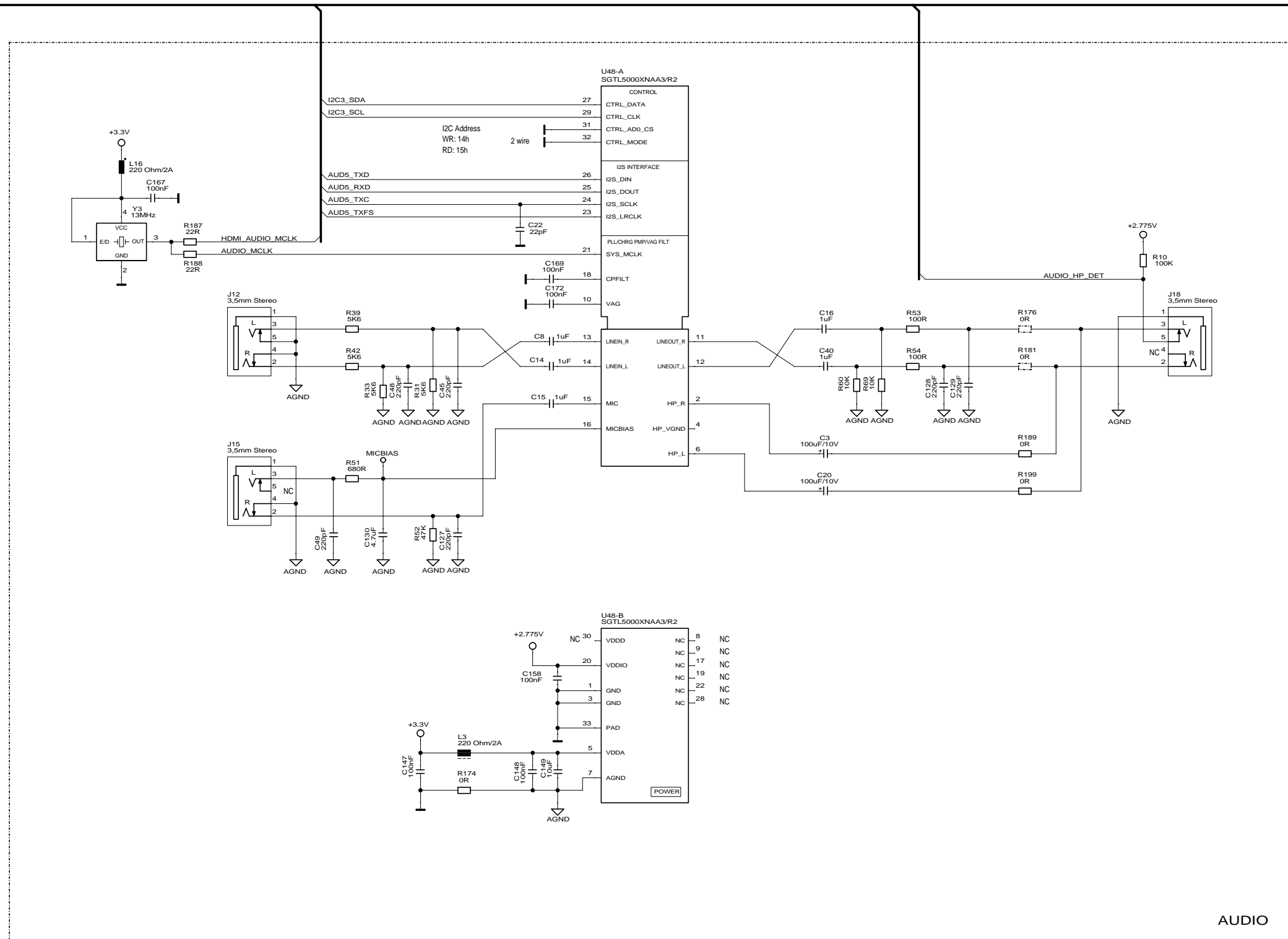
USB OTG, USB HUB

55001662-01



Usable for:				File name: 3001372x-02_A.scm	
				<b>JSCCW-i.MX53</b>	
				JumpStart Board for ConnectCore Wi-I.MX 53	
		Date	Name	Title:	
		Designer	26.07.2011	DA	
		Approved			
		ISO			
				Partnumber:	Sheet
				55001662-01	10
				Provided for:	of 13
				Provided by:	
01	Initial Design	26.07.2011	DA		
Rev.	Modification	Date	Name		

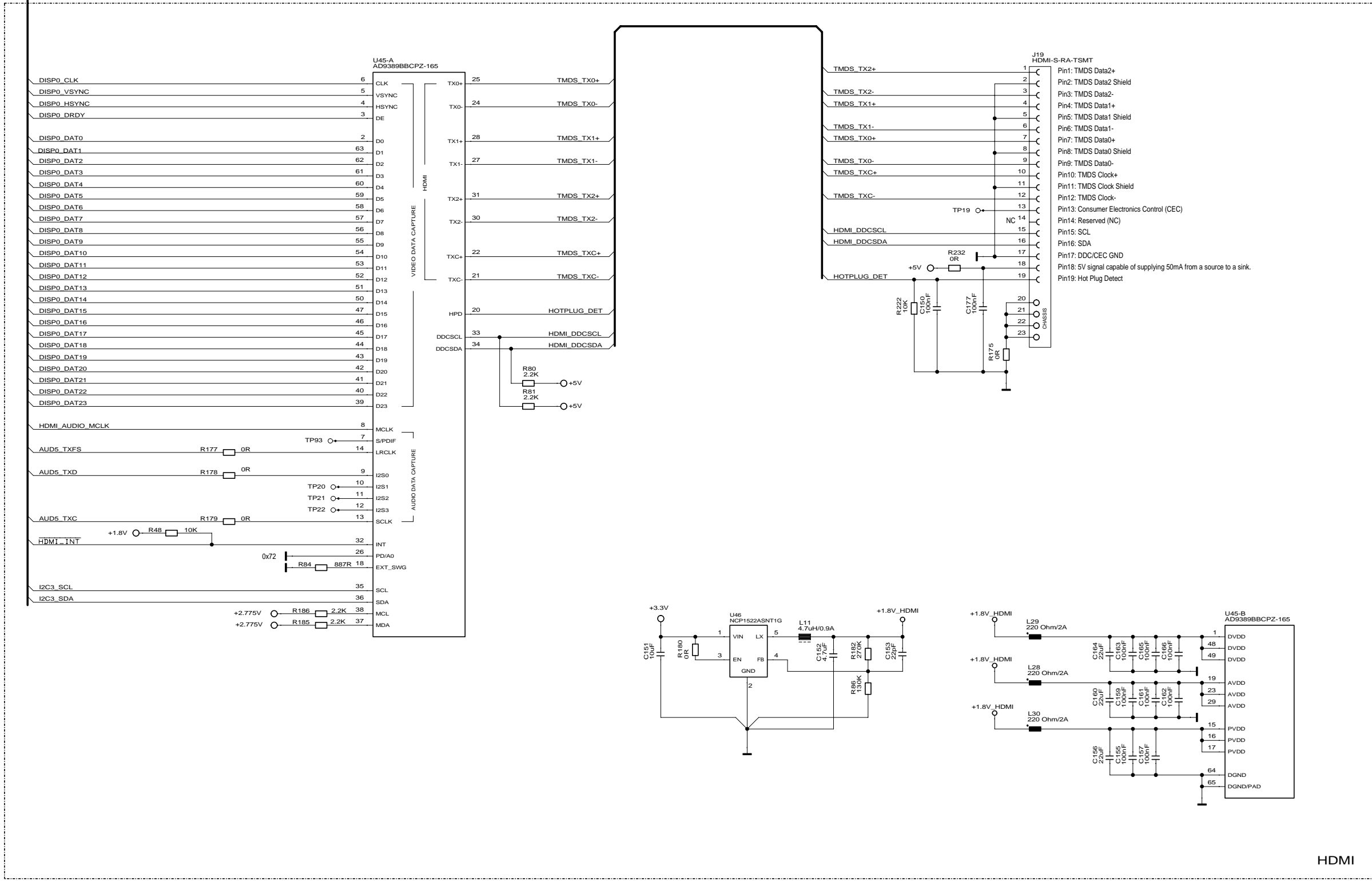




AUDIO

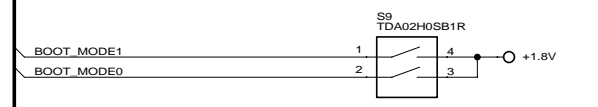
Usable for:				Filename: 3001372x-02_A.scm		
				<b>JSCCW-i.MX53</b> <small>JumpStart Board for ConnectCore Wi-MX53</small>		
				<b>AUDIO</b>		
				Partnumber: <b>55001662-01</b>		
				Sheet 11 of 13		
Rev. Modification Date Name				Title: <b>AUDIO</b> Designer: DA, Date: 26.07.2011 Approved: ISO: Provided for: Provided by:		



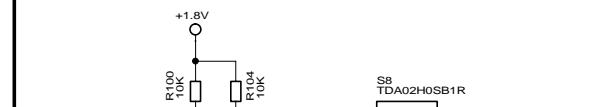


HDMI

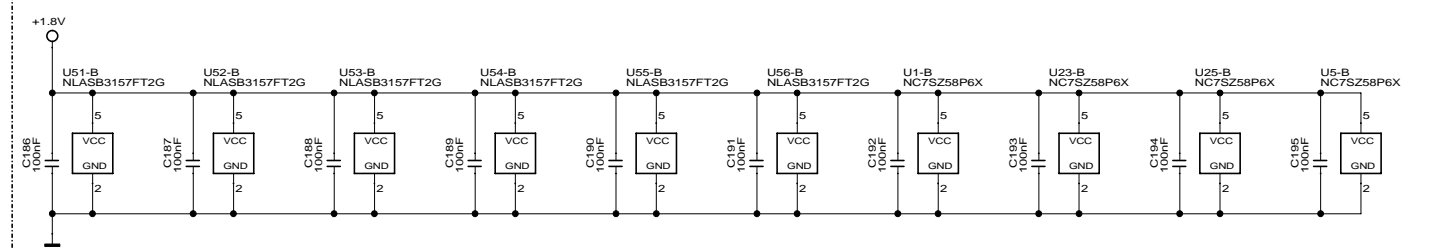
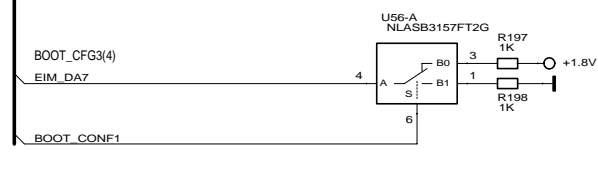
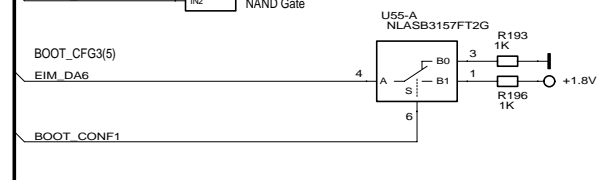
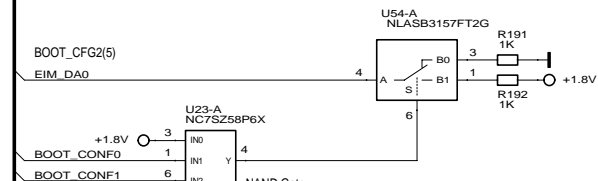
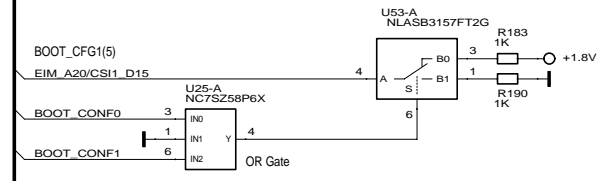
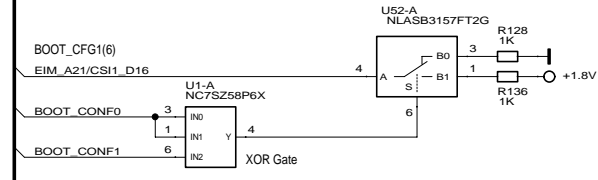
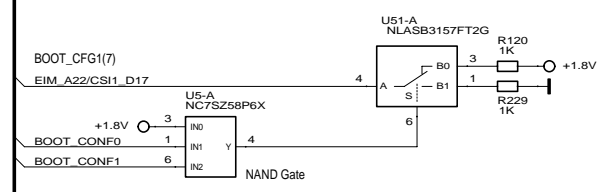
Usable for:				Filename: 3001372x-02_A.scm	
				<b>JSCCW-i.MX53</b> JumpStart Board for ConnectCore Wi-MX 53	
				<b>HDMI</b>	
				Partnumber: 55001662-01	
				Sheet 12 of 13	
Rev. 01 Initial Design 26.07.2011 DA				Title: HDMI	
Rev. Modification Date Name				Designer: 26.07.2011 DA Approved: ISO Date: Name:	
				Provided for: Provided by:	



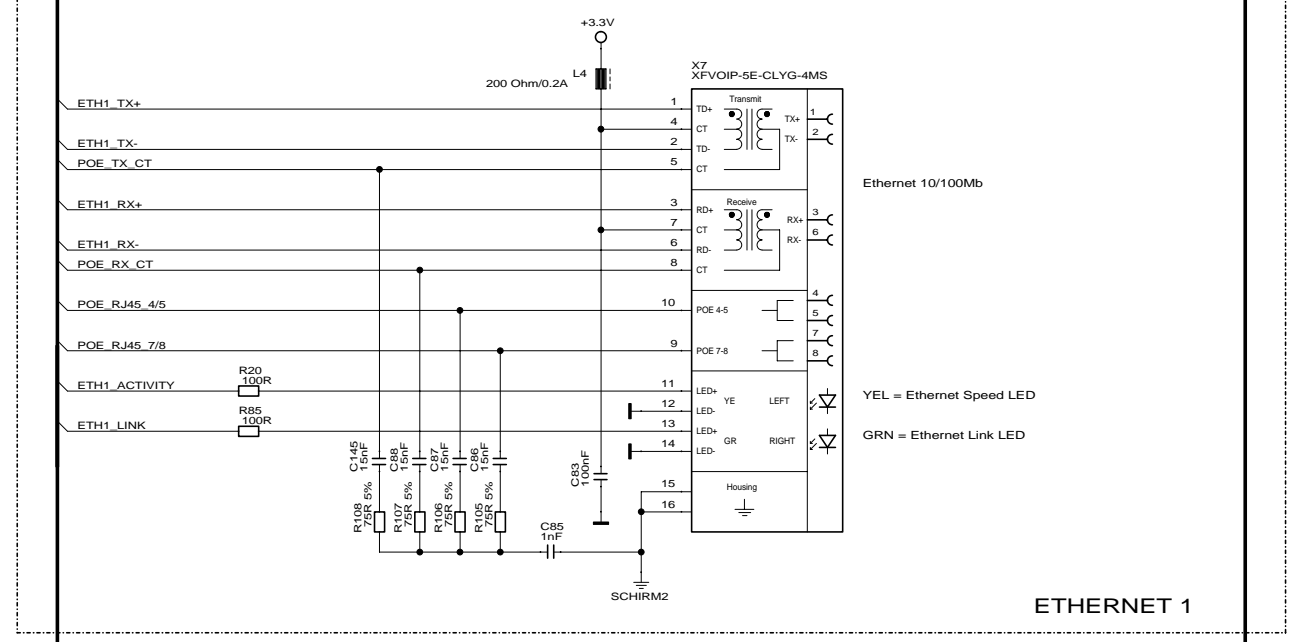
BOOT_MODE1	BOOT_MODE0	Description
Open	Open	Internal Boot
Open	Close	Reserved
Close	Open	Boot From Fuses
Close	Close	Serial Downloader



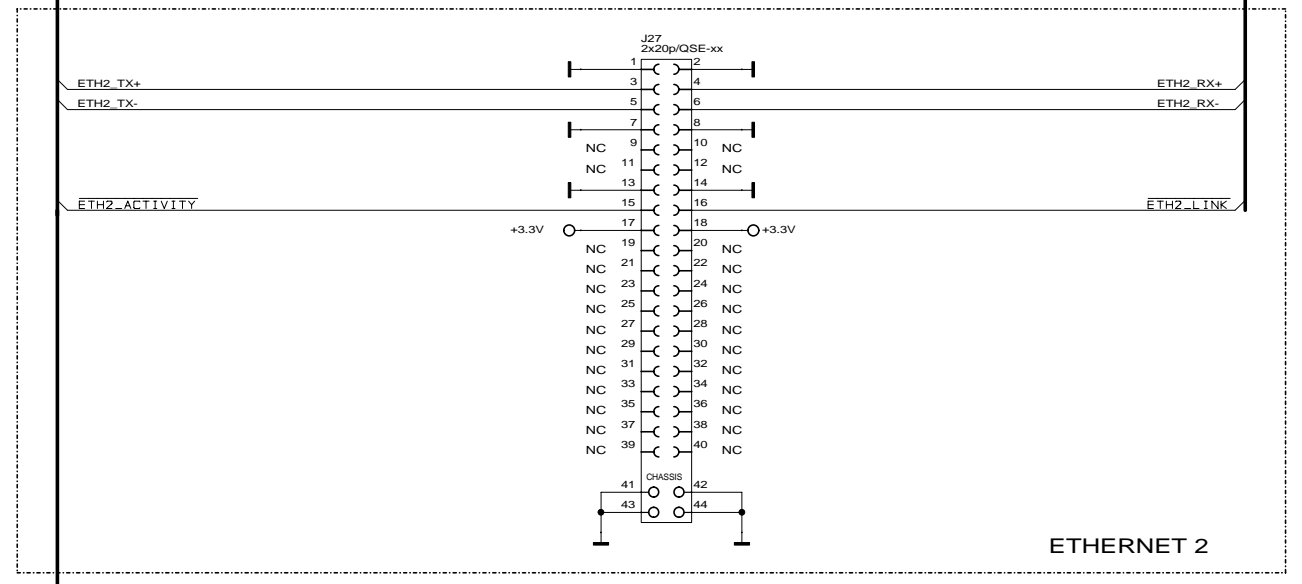
BOOT_CONF1	BOOT_CONF0	Description
Open	Open	Boot From Flash
Open	Close	Boot From uSD
Close	Open	Boot From SD
Close	Close	Boot From SATA



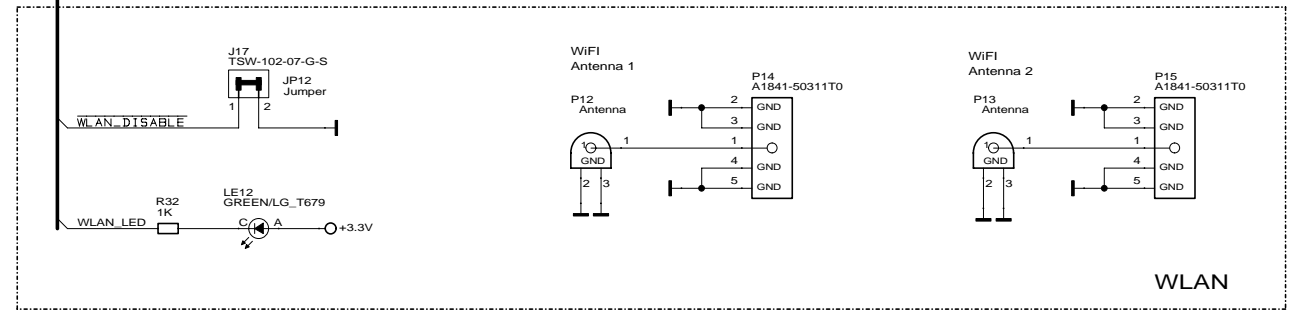
BOOTSTRAP



ETHERNET 1

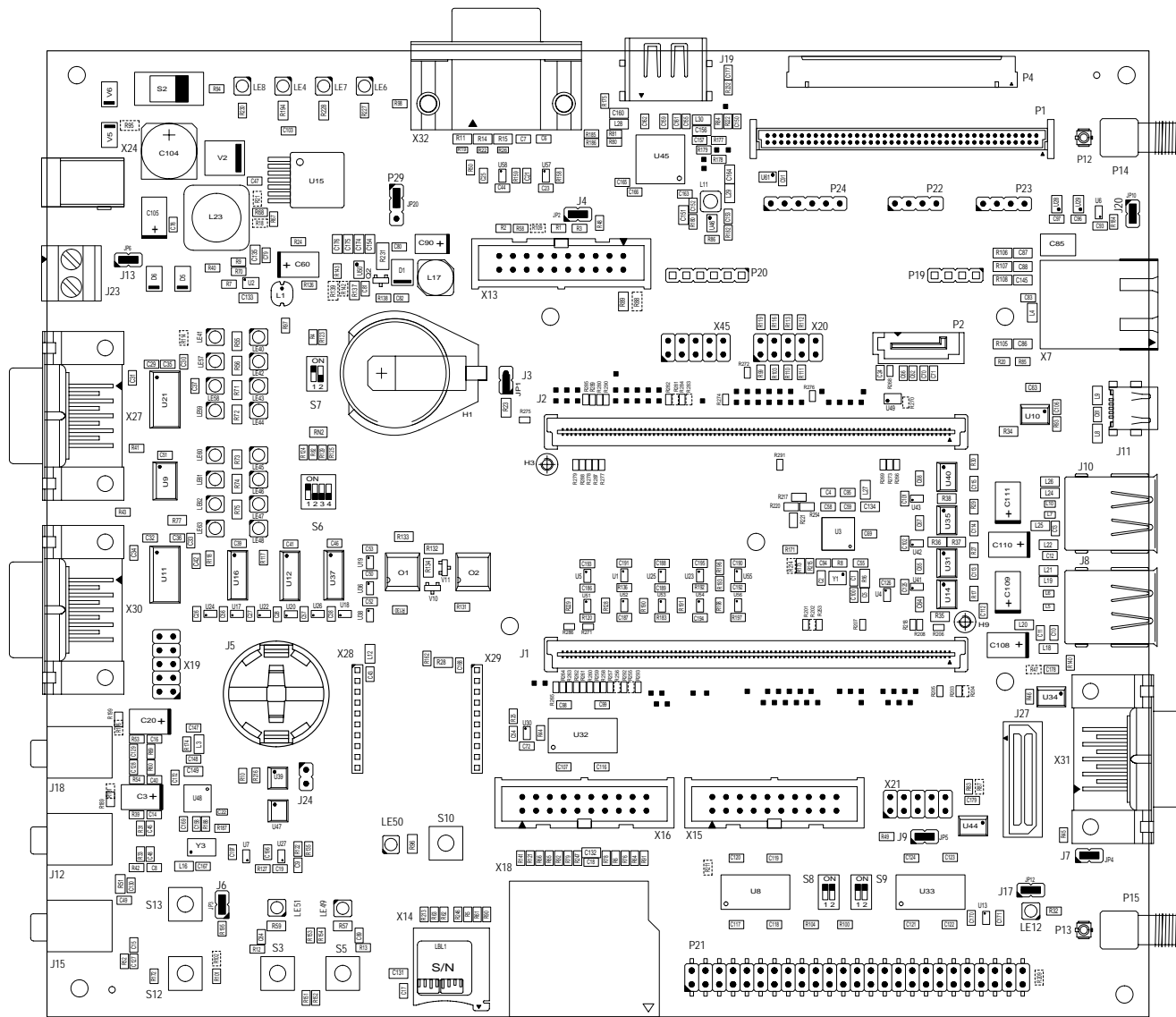



ETHERNET 2

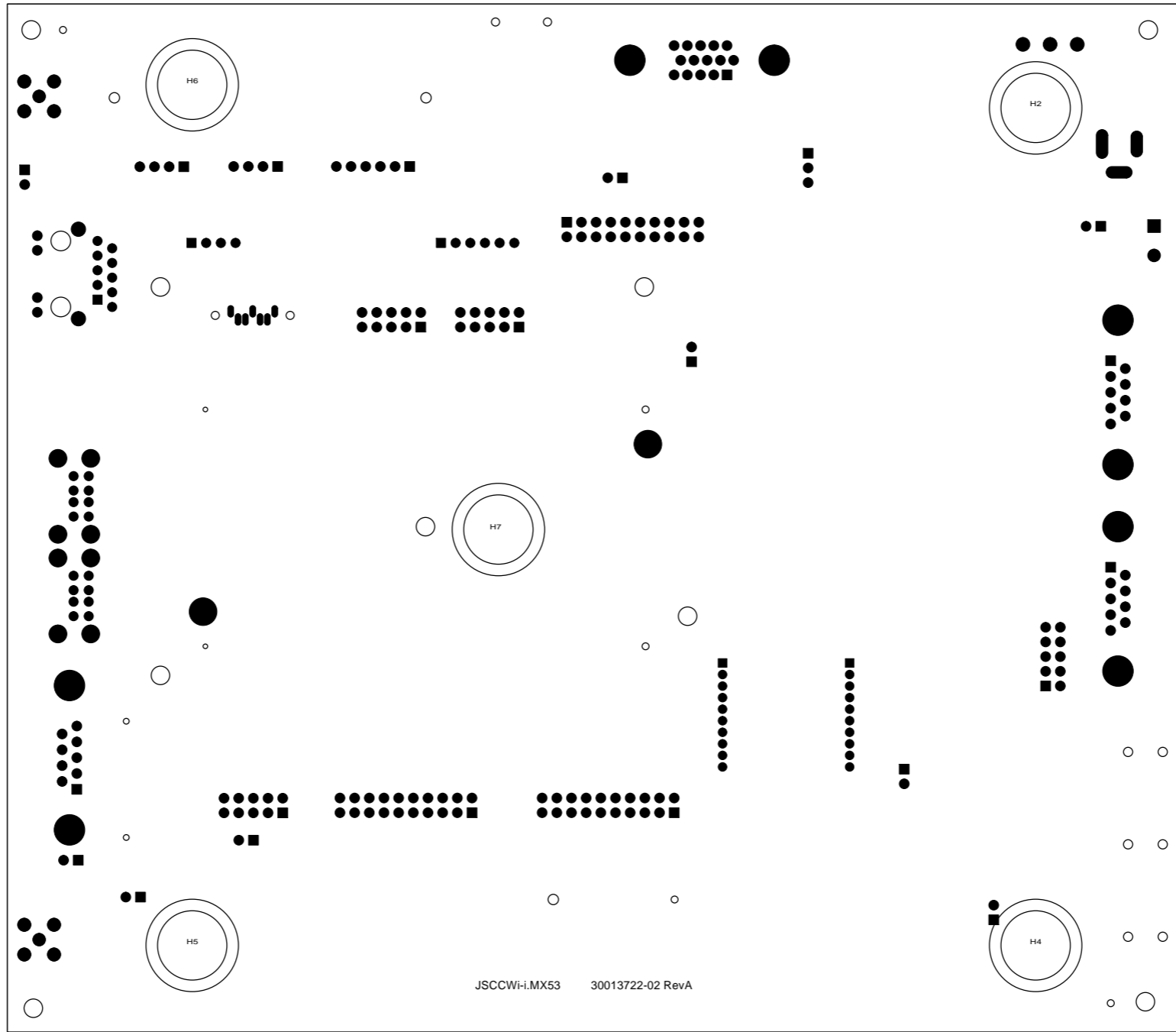


WLAN

Usable for:				File name: 3001372x-02_A.scm	
<b>JSCCW-i.MX53</b> JumpStart Board for ConnectCore Wi-MX 53				Title:  <b>BOOTSTRAP, ETHERNET, WLAN</b>	
Designer	26.07.2011	Name	DA		
Approved					
ISO					
				Partnumber:	55001662-01
01	Initial Design	26.07.2011	DA	Sheet	13
Rev.	Modification	Date	Name	Provided for:	Provided by:
				of	13



Usable for:				Filename: 3001372x-02_a.pcb	
				JSCCW-i.MX53	
				JumpStart Board for ConnectCore Wi-MX53	
				Date	Name
				26.08.11	SC
				Designer	
				Approved	
				ISO	
				Title:  <b>Placement TOP Side</b>	
				Partnumber:	Sheet
				<b>55001662-01</b>	1
				Provided for:	of
				Provided by:	2
01	Initial Design	26.08.11	SC		
Rev.	Modification	Date	Name		



JSCCW-i.MX53 30013722-02 RevA

JSCCW-i.MX53 Layer6 BOT  
18.10.11

Usable for:				Date		Name		Filename: 3001372x-02_A.pcb	
				26.08.11		SC		<b>JSCCW-i.MX53</b> JumpStart Board for ConnectCore Wi-i.MX 53	
				Designer				Title:  <b>Placement Bottom Side</b>	
				Approved					
				ISO					
								Partnumber: <b>55001662-01</b>	
								Sheet 2 of 2	
Rev.		Modification		Date		Name		Provided for: Provided by:	
01		RevA: Initial Layout		26.08.11		SC		