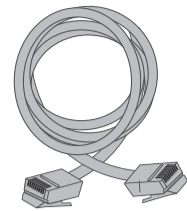




Making DEVICE NETWORKING easy



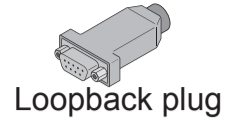
Digi Connect WAN



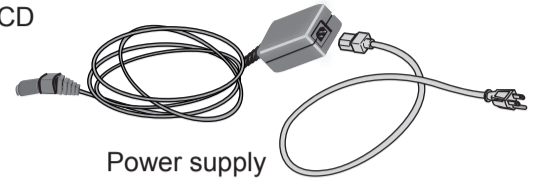
Straight-through cable



Digi Connectware Manager CD



Loopback plug



Power supply



Antenna sold separately



PN:(1P)9000760-88 B

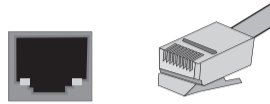
Quick Start Guide

ConnectPort™ WAN VPN EVDO

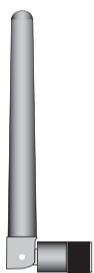
Connect Hardware



Ethernet Activity (green) - Ethernet link is up, (yellow) - blinking - Ethernet traffic on the link



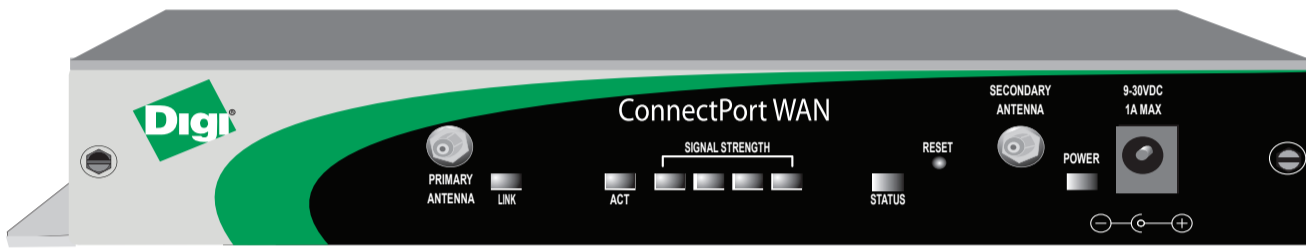
2 Connect Ethernet cable from any one of the Ethernet ports directly to a laptop computer.



1 Connect antennae to primary and secondary connectors.



Warning: Do not over-tighten the antenna. Over-tightening may damage internal connections. Loosen antenna before adjusting antenna angles.



System Status (yellow) - blinking firmware initializing

Power (green) steady

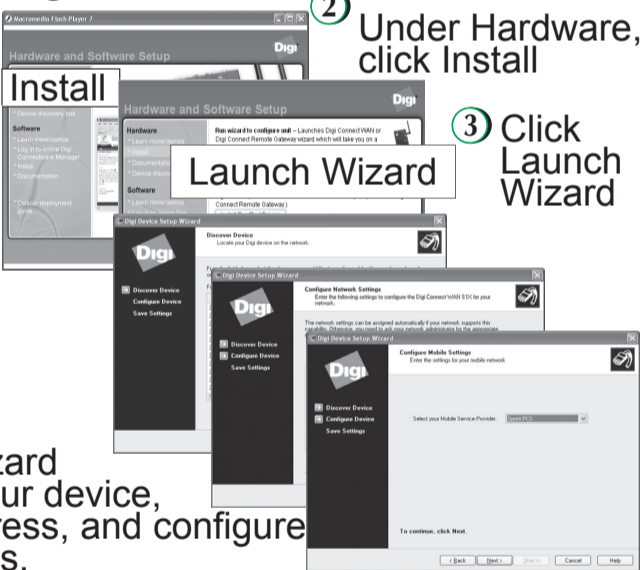


3 Connect power supply

Install Wizard and Configure Device

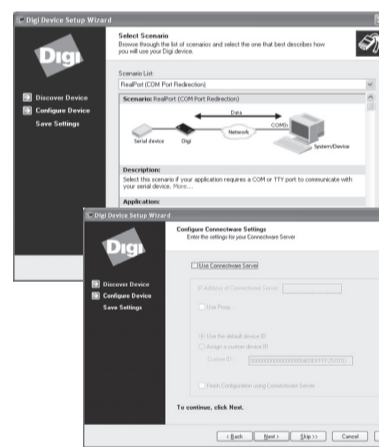


1 Insert CD



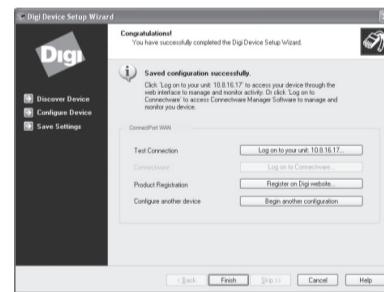
2 Under Hardware, click Install

3 Click Launch Wizard



4 Select a scenario that best describes your environment.

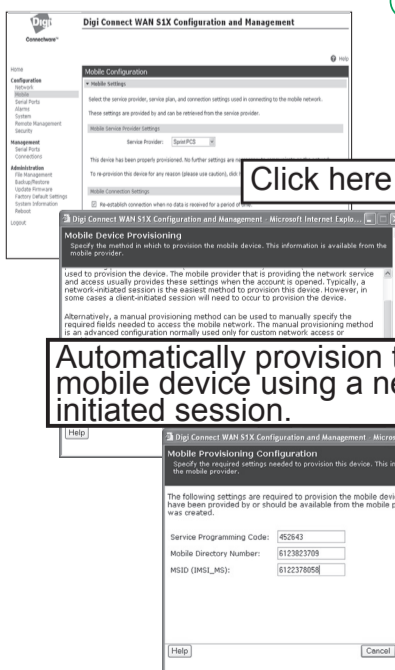
5 Enter your Connectware server settings. You may skip this page if you are not using Connectware Manager. For more information on Connectware Manager, refer to the Connectware Manager Getting Started Guide.



6 After saving your configuration check "Log on to unit..." This will open the web interface where you must configure your mobile settings.

The ConnectPort WAN has DHCP server enabled by default. In order to discover your Digi device, make sure your host computer is setup to obtain IP addresses automatically. Also ensure all firewall software is temporarily disabled.

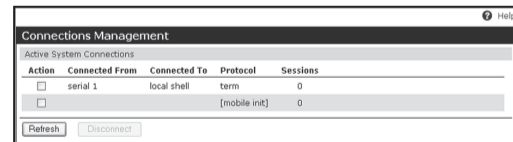
Configure Your Cellular Settings



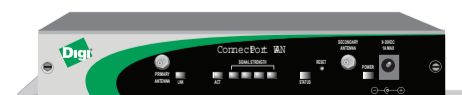
1 From the web interface, verify the mobile settings. Select the link "Click here" to provision the device.

2 Select Automatically provision the device.

3 Enter your activation information for provisioning your device. This information is provided by your cellular service provider. Click Next.



4 Under Management click Connections to verify your configuration has found an access point. To test your configuration and verify proper Ethernet to cellular routing, see the back of this guide.



The Link and Active lights will blink when the cellular connection is active.

If you have any difficulties, use the test scenario on the back of this guide to verify or troubleshoot your configuration.

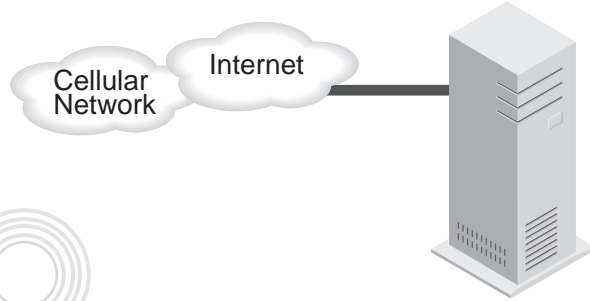
Test the Configuration

Test Your Digi ConnectPort WAN:

The test scenario requires assigning a static IP address to both the Digi ConnectPort WAN and your laptop or PC.

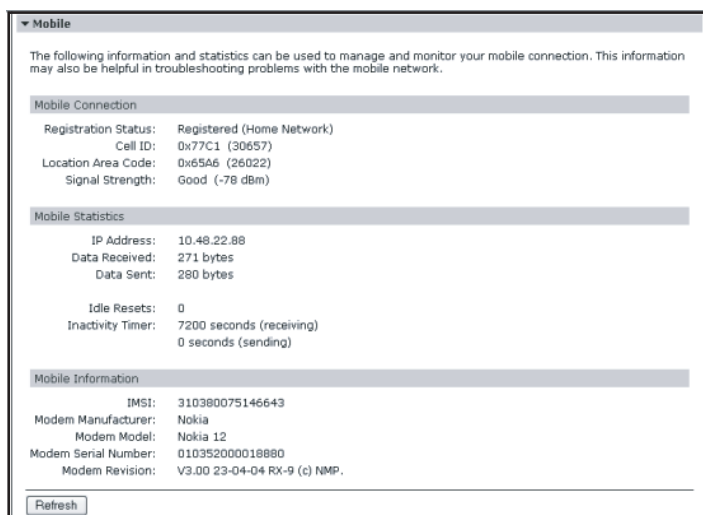
The following test scenario will prove proper routing of the cellular to Ethernet interface.

- 1 Connect the Digi ConnectPort WAN to your laptop or PC



- 2 The Digi ConnectPort WAN are configured by default with a static IP address of 192.168.1.1 and a DHCP server. The DHCP server will hand out leases beginning with 192.168.1.100. Configure your laptop or PC to obtain IP settings automatically and you will receive an IP address, default gateway and DNS server addresses from the Digi ConnectPort WAN

- 3 Open your browser to the web interface of the Digi device by entering 192.168.1.1 in the URL address bar. Click System Information > Mobile. Verify that your device has appropriate signal strength and has obtained an IP address from the mobile network



- 4 Check your connection across the cell network by entering a web site of your choice in the URL address bar of your browser and hit enter (e.g. www.digi.com). If your web page appears, you have verified cellular network communication.