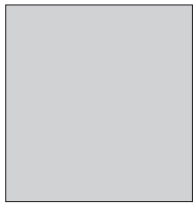


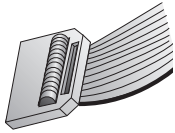
1 Verify kit contents



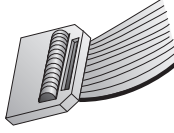
RIO Application Kit Board



This Quick Start Guide



Flat ribbon
6-pin cable



Flat ribbon
20-pin cable



Quick Start Guide

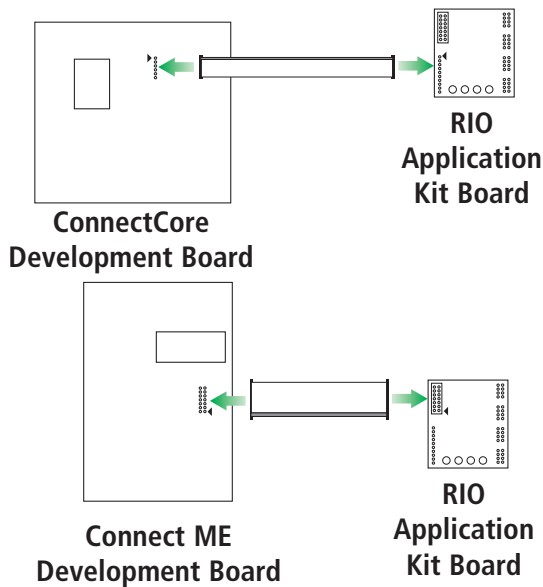
RIO Application Kit



PN (1P): 90001027-88 A

2 Connect hardware to development board

Connect your Development board to the RIO Application Kit board via the provided cables and configure the jumpers and switches of the development board according to the following table (only one cable is needed):



NOTES:

- 1) Be aware of the mark designating the pin 1 of the connector in the boards (usually a triangle).
- 2) The Jumpers/Switches column shows the appropriate configurations to enable the SPI port on the different development boards.

Development Board	Cable	RIO AppKit board	Development board connector	Jumpers/ Switches
JSCC9P9360	6-pin	P1 (SPI header 6-pin)	X8 (SPI header)	Micro switch S7.2 to ON
CCW9C_LC	6-pin	P1 (SPI header 6-pin)	P7 (SPI header)	Micro switch SW2.2 to OFF
JSCC9M2443	6-pin	P1 (SPI header 6-pin)	X8 (SPI header)	N/A
JSCC9P9215	6-pin	P1 (SPI header 6-pin)	X8 (SPI header)	N/A
ConnectME_dev	20-pin	P2 (DIGI CONNECT ME)	P3	Jumper P5 to position 2-3 (RS-232 DISABLE) All micro switches of I/O SELECTION to GPIO position

3 Download software and documentation

- a To obtain a materials lists and installation instructions specific to your platform, go to <http://www.digi.com/support>
- b From the "Select a Product" drop down box, select "Application Kits"

4 What's next?

Open User Manual for installation and use instructions for the RIO Application Kit drivers and software