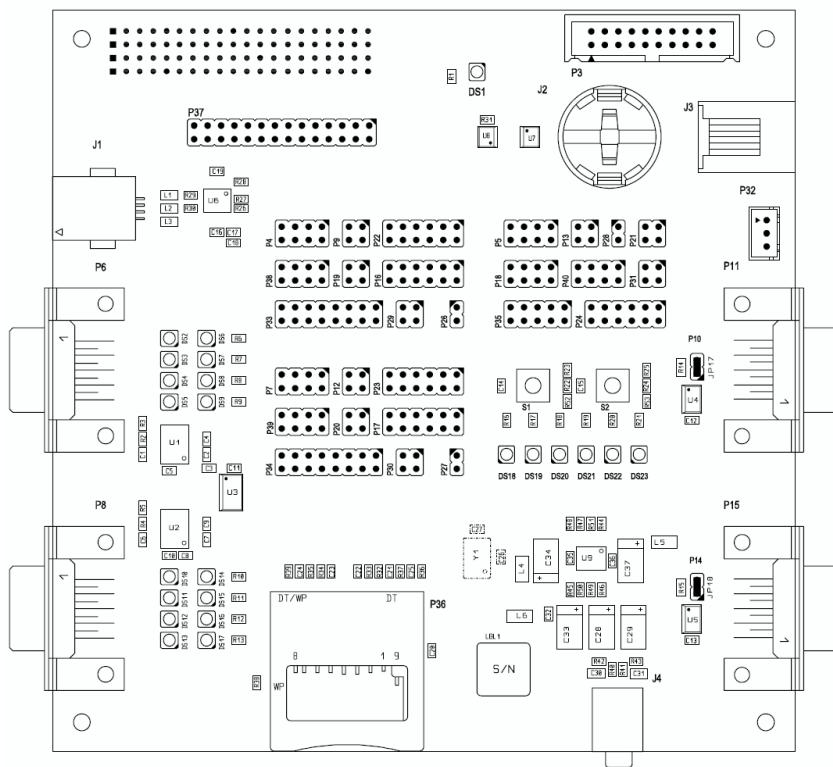


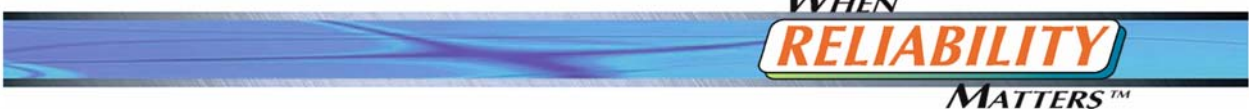


FIM_APPKIT

55001435-01_01



www.digi.com

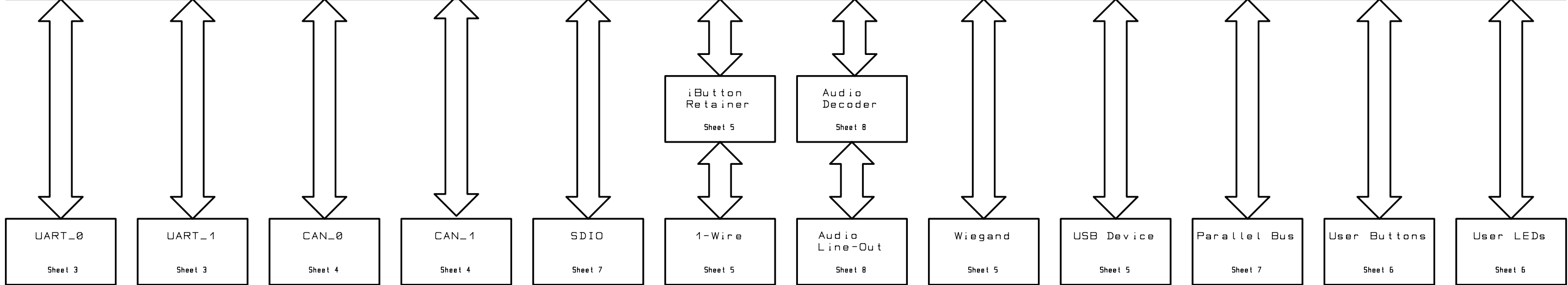


FIM Application Kit

ConnectCore 9P 9215 JumpStart Connector
Sheet 2

Digi Connect Me 9210 Dev Connector
Sheet 2

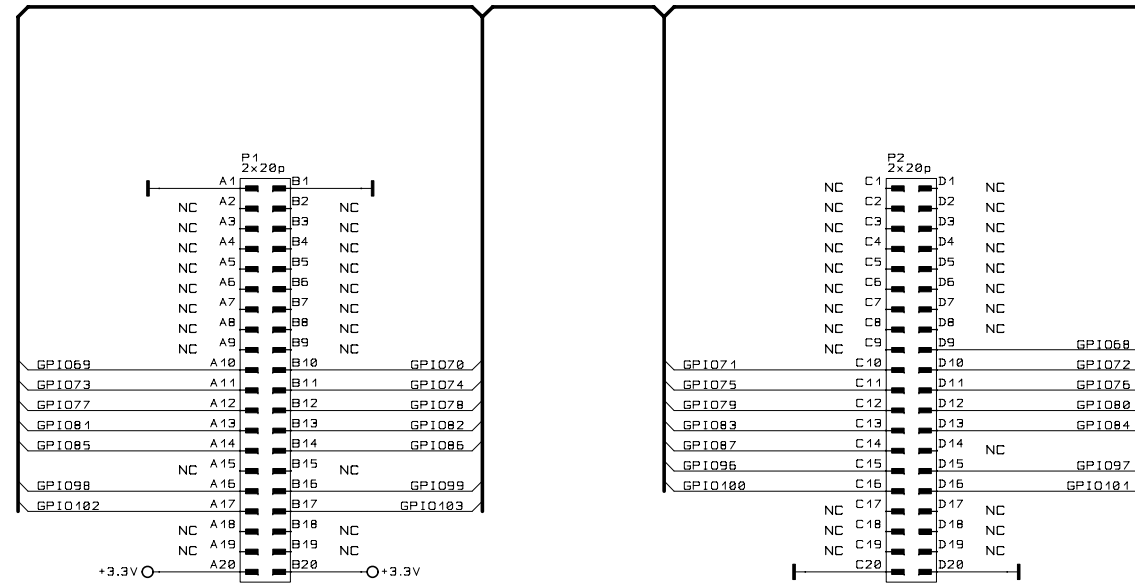
Board Configuration



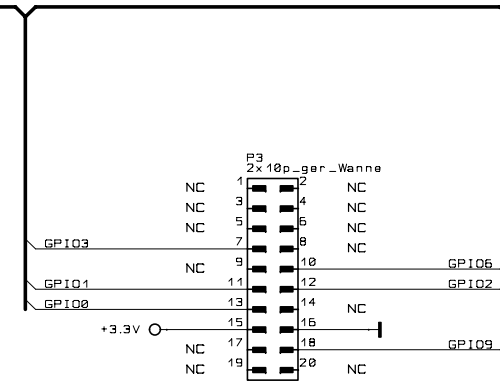
All rights reserved © Digi International Inc.

Usable for:						Filename: FIM_APPKIT.scm	
				FIM_APPKIT PCA FIM_APPKIT			
				Designer	13.03.2009	DA	Overview
				Approved			
				ISO			
						Partnumber: 5500 1435-01	
						Sheet 1 of 8	
Rev.	Modification	Date	Name			Provided for: Provided by:	
01	Initial Version	13.03.2009	DA				

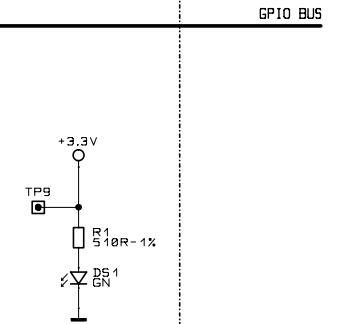
ConnectCore 9P 9215 JumpStart Connector



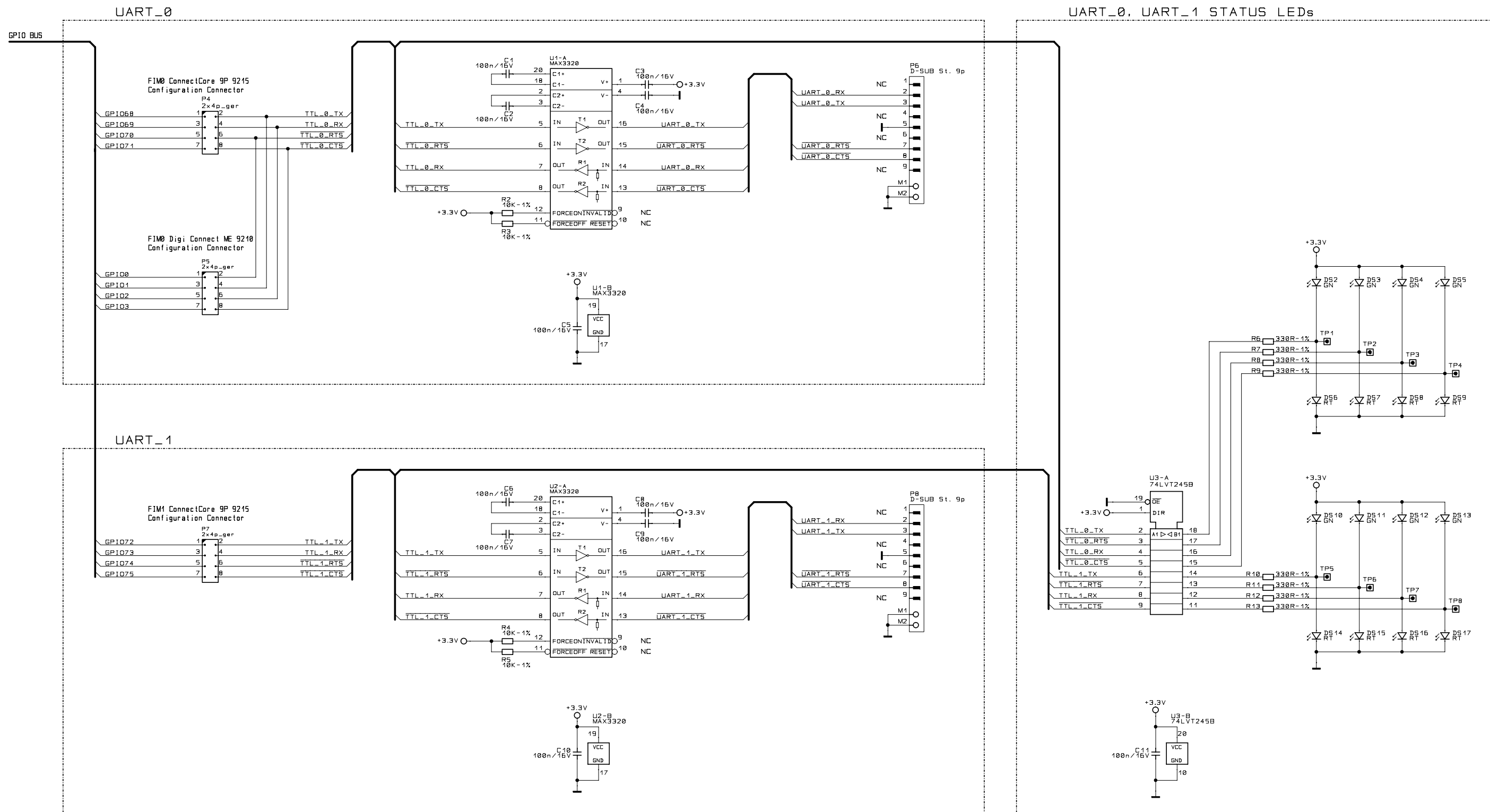
Digi Connect ME 9210 Connector




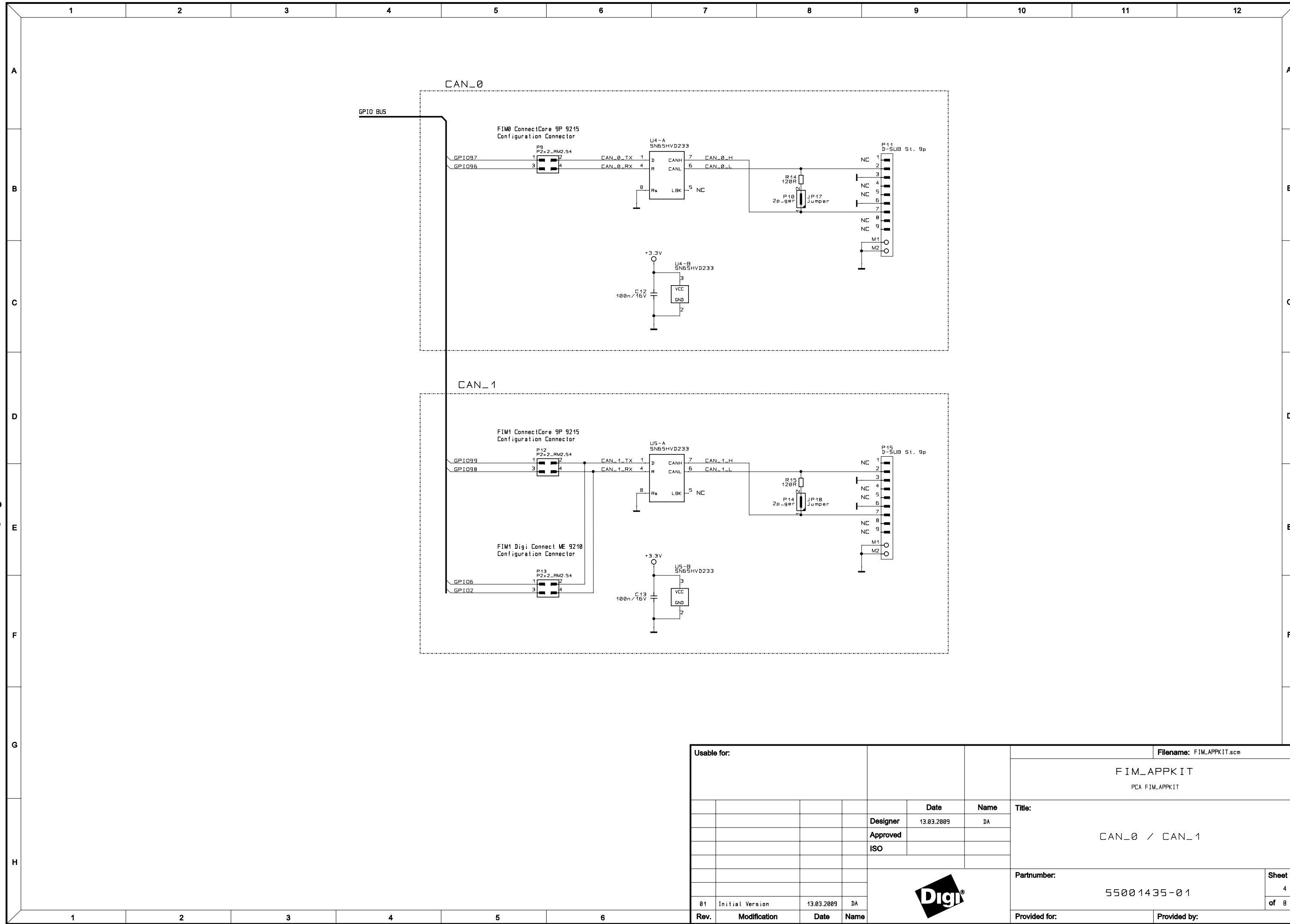
Power LED



Usable for:						Filename: FIM_APPKIT.scm	
				FIM_APPKIT PCA FIM_APPKIT			
				Designer	13.03.2009	DA	Title: System Connectors
				Approved			
				ISO			
						Partnumber:	Sheet
						5500 1435-01	2
						Provided for:	of 8
01	Initial Version	13.03.2009	DA			Provided by:	
Rev.	Modification	Date	Name				

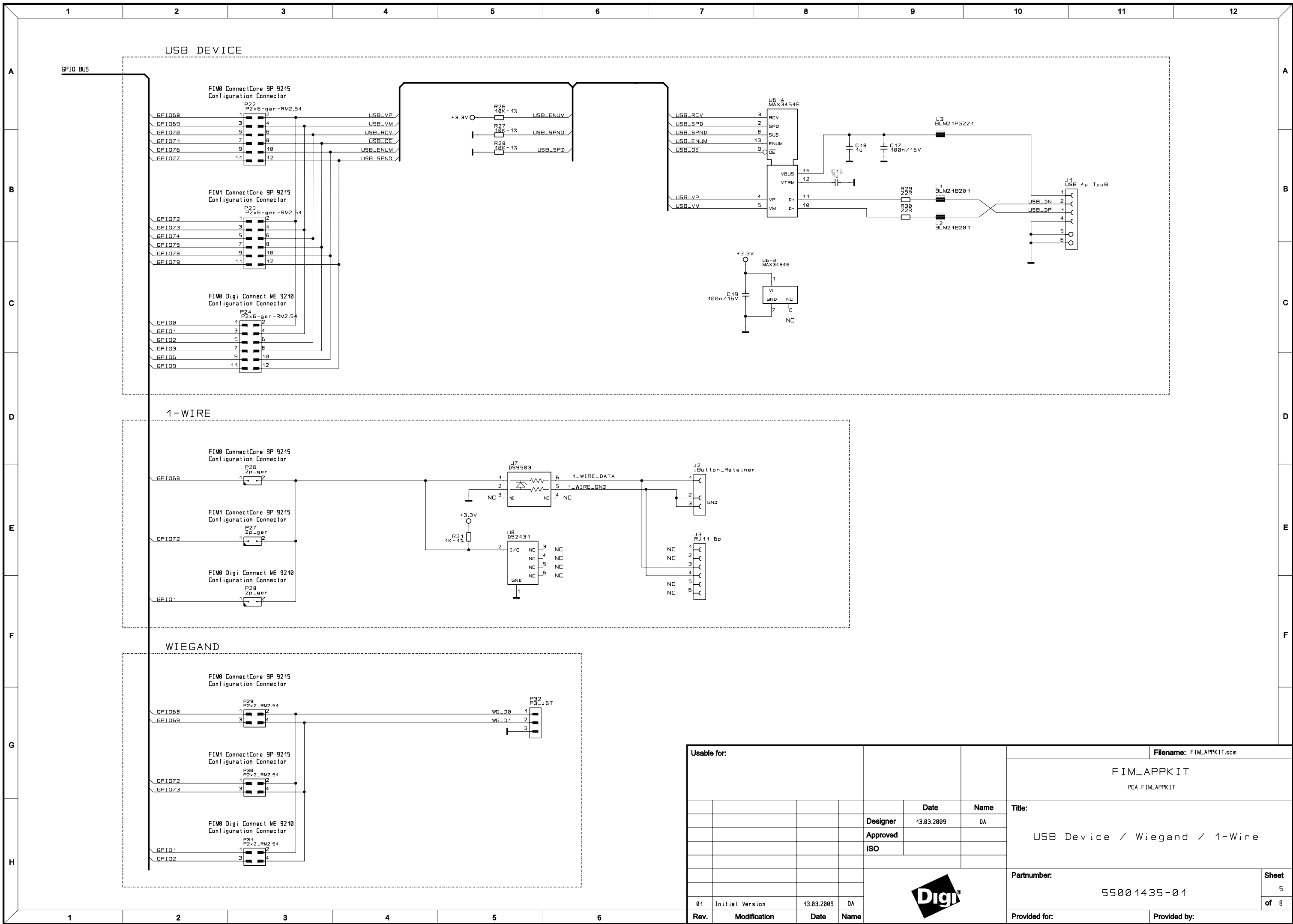


Usable for:				Filename: FIM_APPKIT.scm			
				FIM_APPKIT PCA FIM_APPKIT			
				UART_0 / UART_1			
				Partnumber:		Sheet	
				55001435-01		3	
				Provided for:		of 8	
				Provided by:			
01	Initial Version	13.03.2009	DA				
Rev.	Modification	Date	Name				



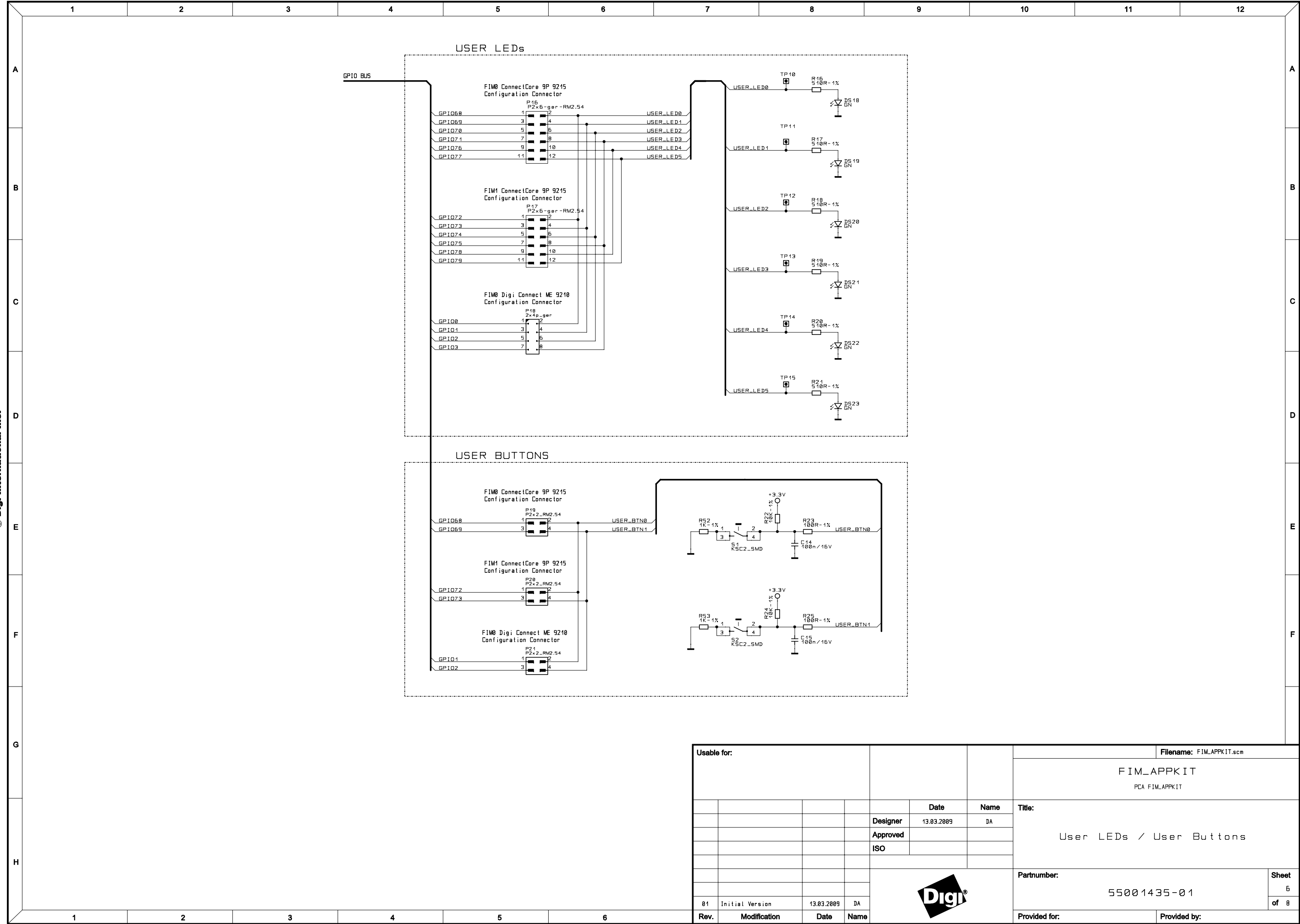
Usable for:				Filename: FIM_APPKIT.scm			
				FIM_APPKIT PCA FIM_APPKIT			
				CAN_0 / CAN_1			
				Partnumber: 5500 1435 - 0 1			
				Sheet 4 of 8			
				Provided for: Provided by:			
Rev.	Modification	Date	Name	Designer	Date	Name	Title:
01	Initial Version	13.03.2009	DA	DA	13.03.2009	DA	





Usable for:				Filename: FIM_APPKIT.scm	
				FIM_APPKIT PCA FIM_APPKIT	
				Date	Name
				13.03.2009	DA
				Designer	
				Approved	
				ISO	
				USB Device / Wiegand / 1-Wire	
				Partnumber:	
				55001435-01	
				Sheet	
				5	
				of 8	
Rev.	Modification	Date	Name	Provided for:	
01	Initial Version	13.03.2009	DA	Provided by:	

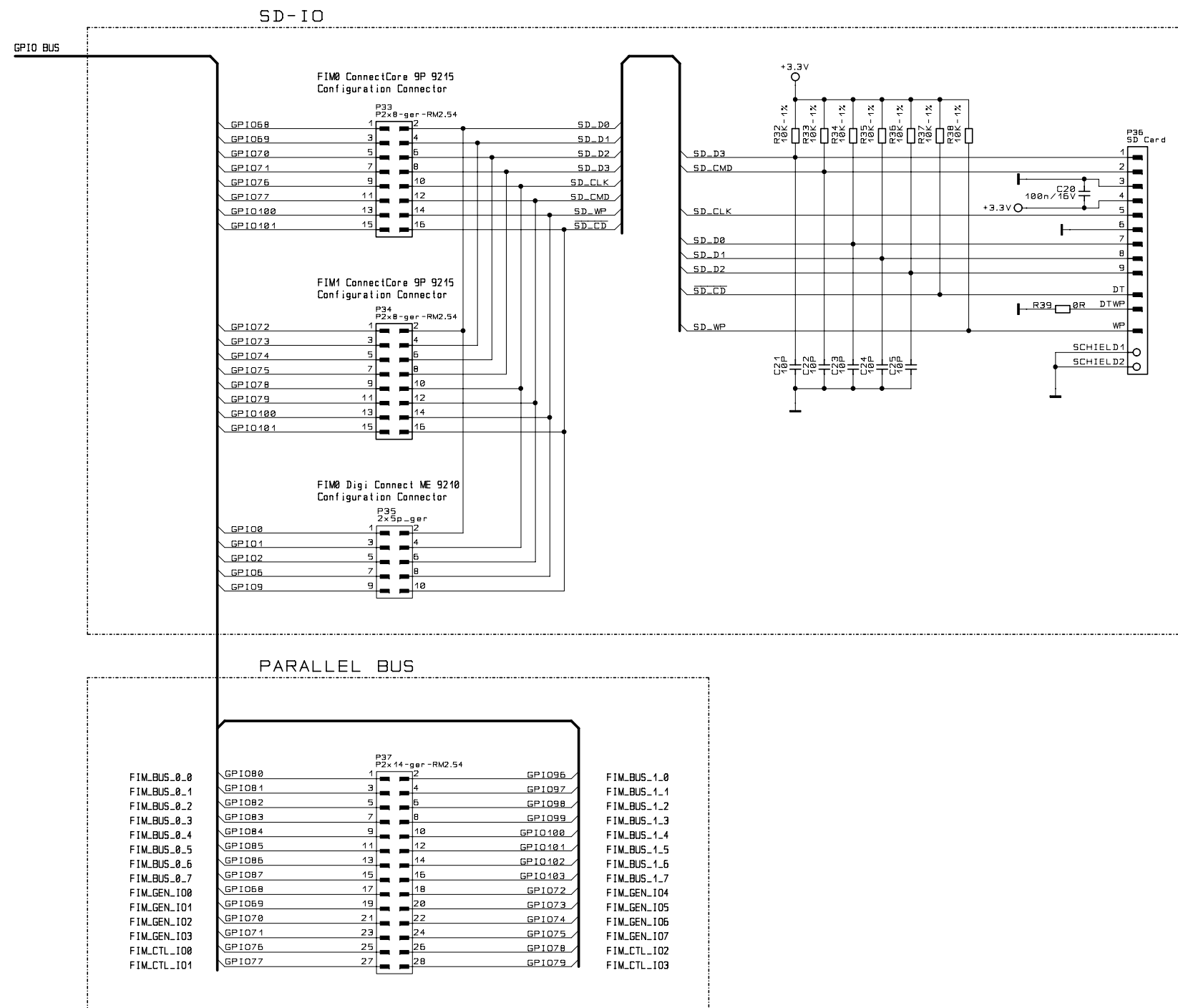




Usable for:				Filename: FIM_APPKIT.scm	
				FIM_APPKIT PCA FIM_APPKIT	
				Date	Name
				13.03.2009	DA
				Designer	
				Approved	
				ISO	
				User LEDs / User Buttons	
				Partnumber:	
				5500 1435-01	
				Sheet	
				6	
				of	
				8	
Rev.	Modification	Date	Name		
01	Initial Version	13.03.2009	DA		

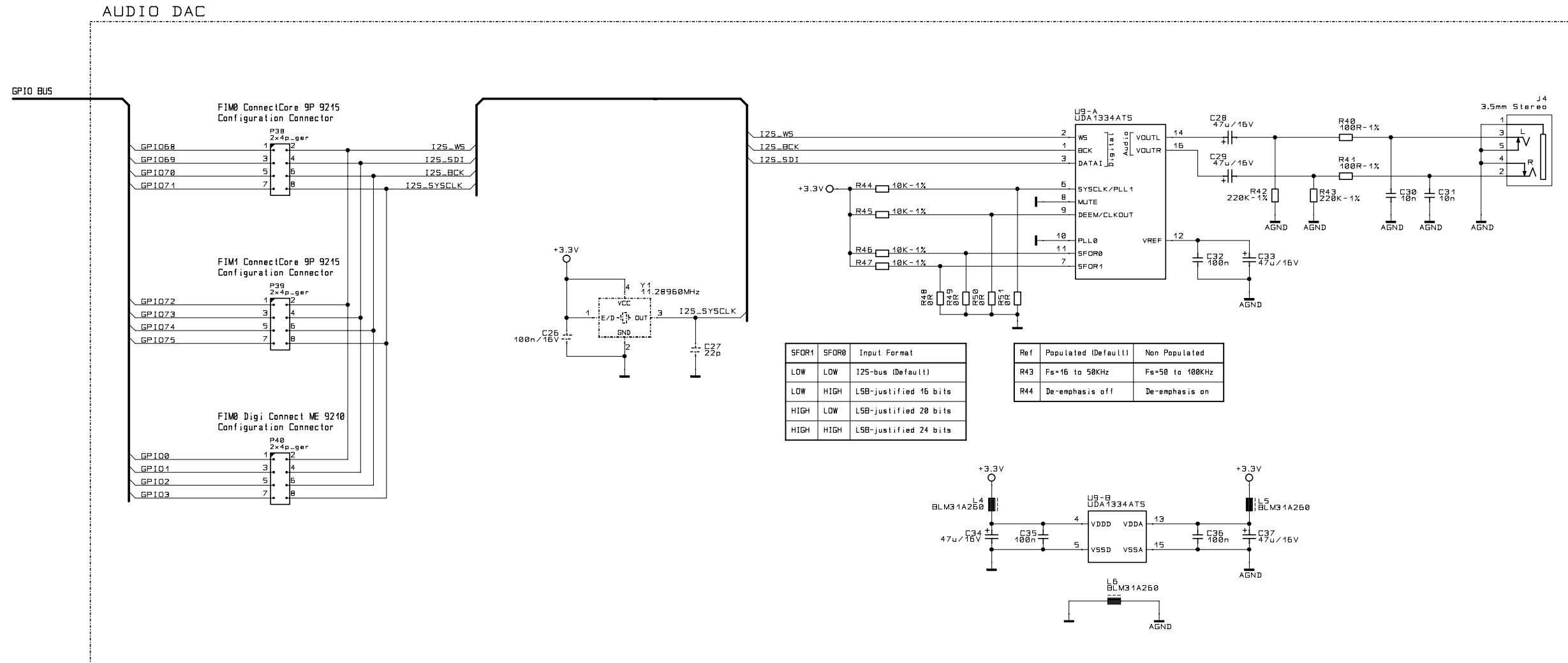


Provided for: _____ Provided by: _____



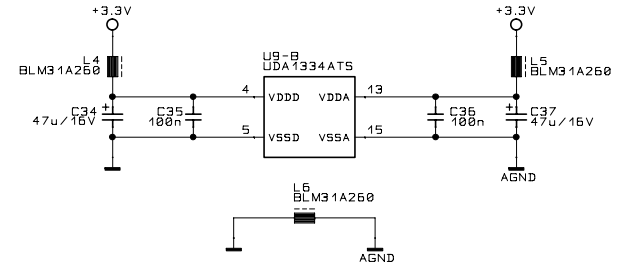
Usable for:				Filename: FIM_APPKIT.scm	
				FIM_APPKIT PCA FIM_APPKIT	
				SD-Card / Parallel Bus	
				Partnumber: 55001435-01	
				Sheet 7 of 8	
				Title: SD-Card / Parallel Bus	
				Designer: 13.03.2009 DA	
				Approved: ISO	
				Date: 13.03.2009	
				Name: DA	
				Rev. 01 Initial Version 13.03.2009 DA	
				Modification: Date: Name:	
				Provided for: Provided by:	





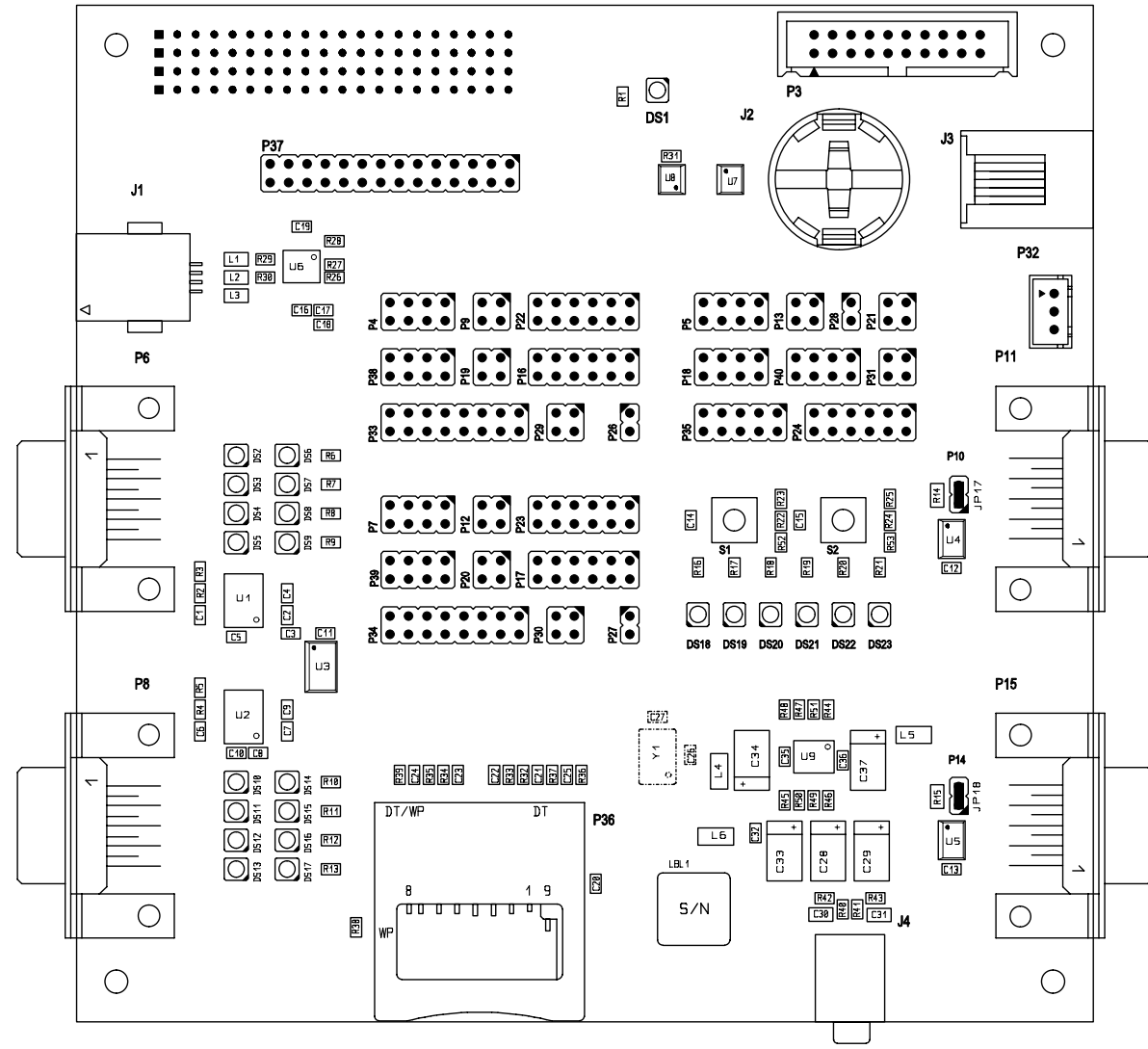
SFDR1	SFDR0	Input Format
LOW	LOW	I2S-bus (Default)
LOW	HIGH	LSB-justified 16 bits
HIGH	LOW	LSB-justified 20 bits
HIGH	HIGH	LSB-justified 24 bits

Ref	Populated (Default)	Non Populated
R43	Fs=16 to 58KHz	Fs=50 to 100KHz
R44	De-emphasis off	De-emphasis on




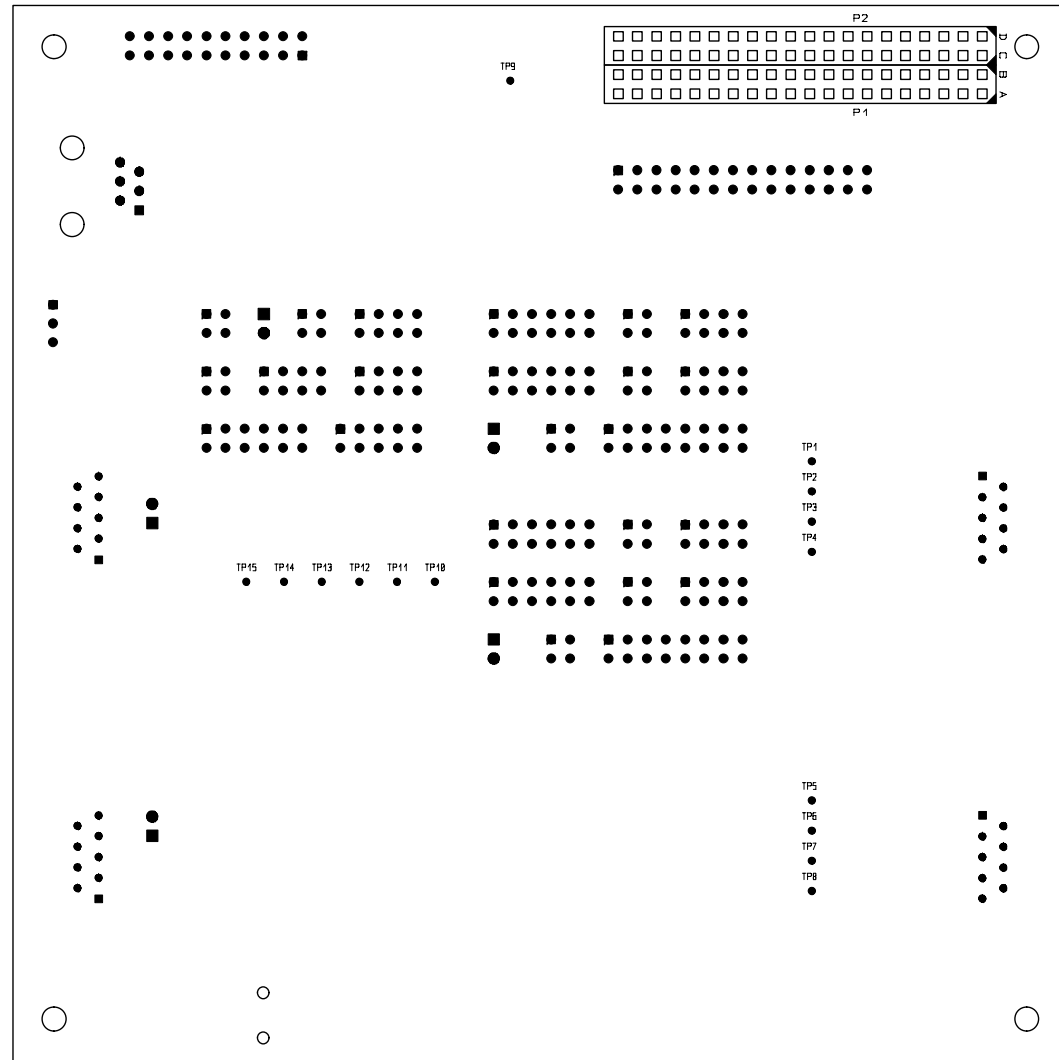
Usable for:				Filename: FIM_APPKIT.scm	
				FIM_APPKIT PCA FIM_APPKIT	
				I2S / Audio DAC	
				Partnumber: 55001435-01	
				Sheet 8 of 8	
Rev. 01 Initial Version 13.03.2009 DA				Provided for: Provided by:	





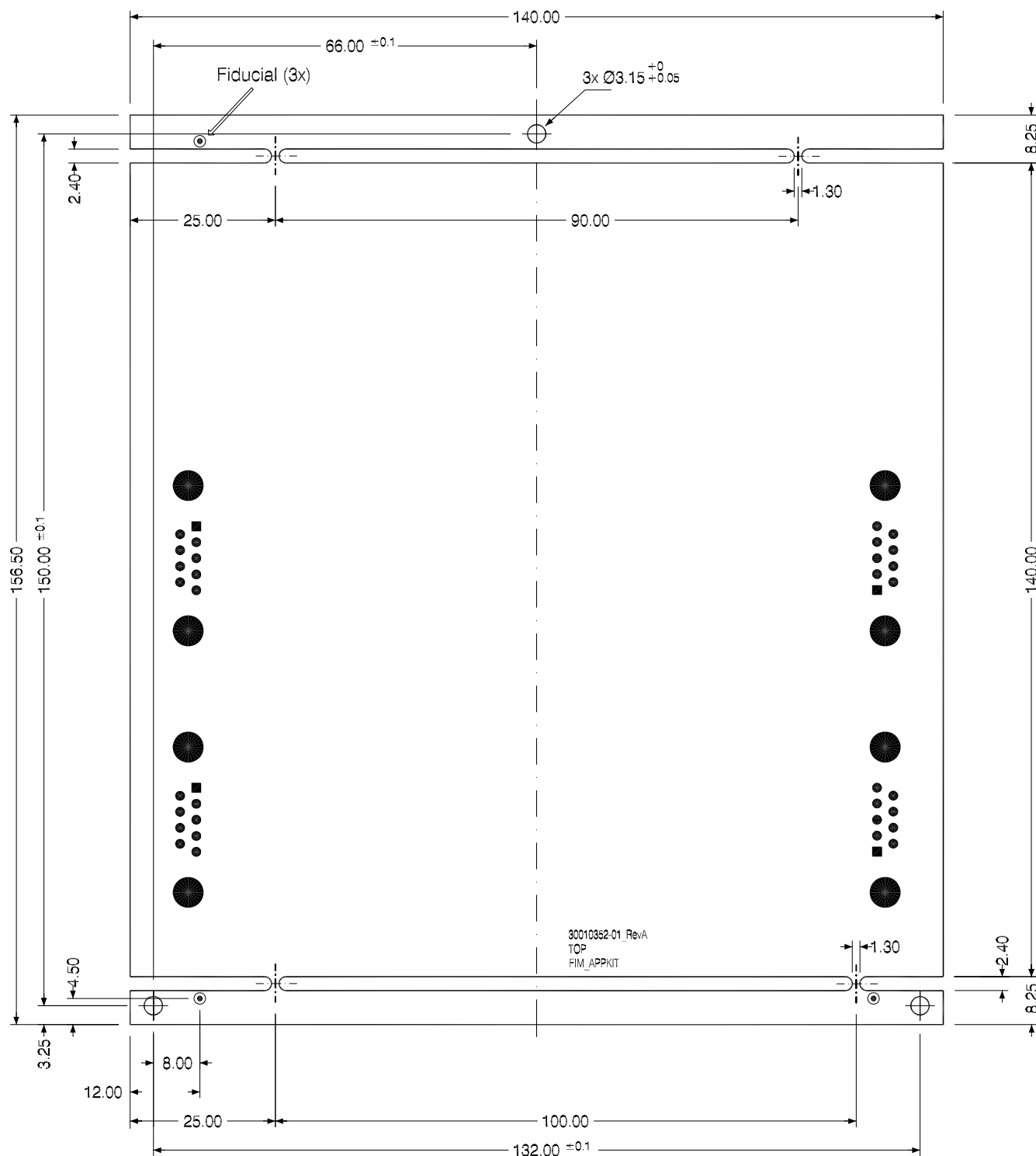
FIM_APPKIT Placement TOP 13.03.09

Usable for:				Scale:		Filename: FIM_APPKIT.pcb	
				FIM_APPKIT PCA FIM_APPKIT			
				Designer		Date	
				DA		13.03.09	
				Approved		Name	
				ISO		DA	
				Placement TOP Side			
				Partnumber:			Sheet
				55001435-01			1
				Provided for:			of 2
							
Rev.	Modification	Date	Name				
01	Initial Version	13.03.09	DA				



FIM_APPKIT Placement BOTTOM Side 13.03.09

Usable for:							Scale:		Filename: FIM_APPKIT.pcb		
							FIM_APPKIT PCA FIM_APPKIT				
				Designer	13.03.09	DA	Placement Bottom Side				
				Approved							
				ISO							
							Partnumber:			Sheet	
							55001435-01			2	
							Provided for:			of 2	
01	Initial Version	13.03.09	DA				Provided by:				
Rev.	Modification	Date	Name								



CAUTION:

- Offset between the reference drills and the fiducials: $\leq 0,1\text{mm}$.
- Offset between the milled board outline and the fiducials: $\pm 0,2\text{mm}$.
- Plated holes and not plated holes must be drilled in one step!
- Fiducials and not plated holes are already defined in the gerber/drill files!

BEACHTEN:

- Versatz der Referenzbohrungen zu den Fiducials: $\leq 0,1\text{mm}$.
- Versatz der Fräskontur zu den Fiducials: $\pm 0,2\text{mm}$.
- DK- und NDK-Bohrungen in einem Arbeitsgang bohren!
- Fiducials und NDK-Bohrungen sind bereits in den Gerber/Drill-daten vorhanden!

All dimensions in mm. Alle Massangaben in mm. Overall tolerance: $\pm 0,1\text{mm}$. Allgemeine Toleranz: $\pm 0,1\text{mm}$.				Scale: 1:1		Filename: 30010352-01_A_PCB.DWG	
				FIM_APPKIT			
				Title:		Dimensions TOP	
		Draw.	Date	Name			
		Appr.	16.03.09	SC			
		Stand.					
						Partnumber:	
						30010352-01_A	
						Sheet	
						1	
						of	
						1	
Rev.	Modification	Date	Name	Provided for:		Provided by:	