

# 1 Verify Kit Contents



7" LCD Display with Touch Screen  
(assembled on its circuitry board)



HR LCD Adapter



This Quick Start Guide



## Quick Start Guide

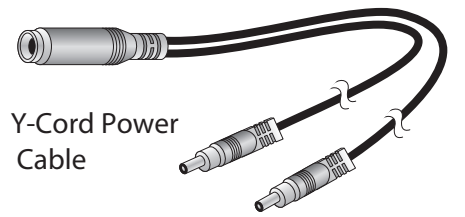
### 7" WVGA LCD Application Kit

ConnectCore™ Wi-i.MX51  
ConnectCore™ Wi-i.MX53  
ConnectCore™ Wi-9M 2443

90001127\_D



Stylus for  
Touch Screen

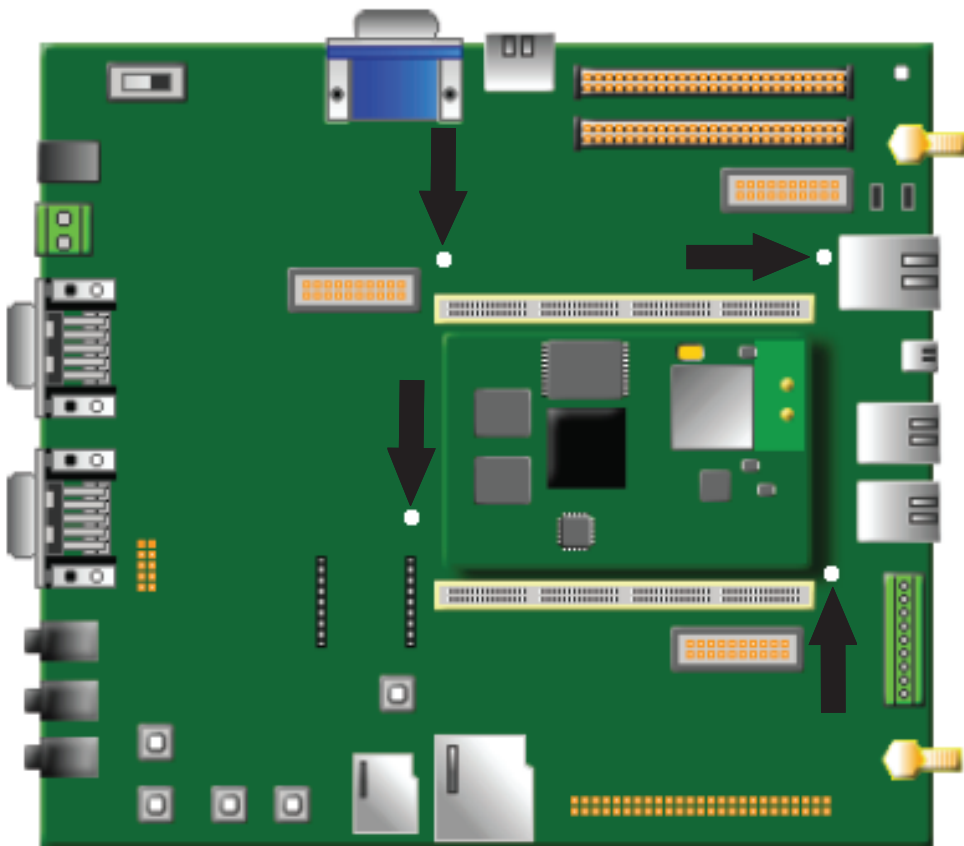


Y-Cord Power  
Cable

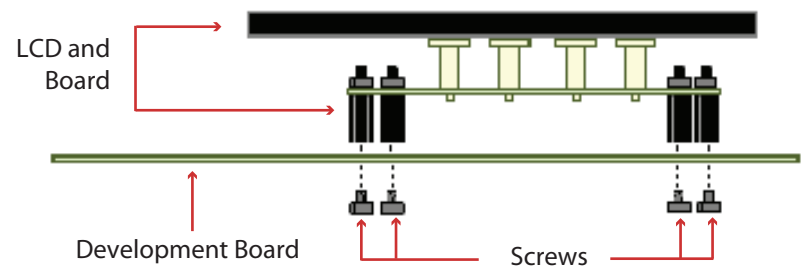
# 2 Hardware Connection

## 2.1 On a ConnectCore Wi-i.MX51 JumpStart Kit

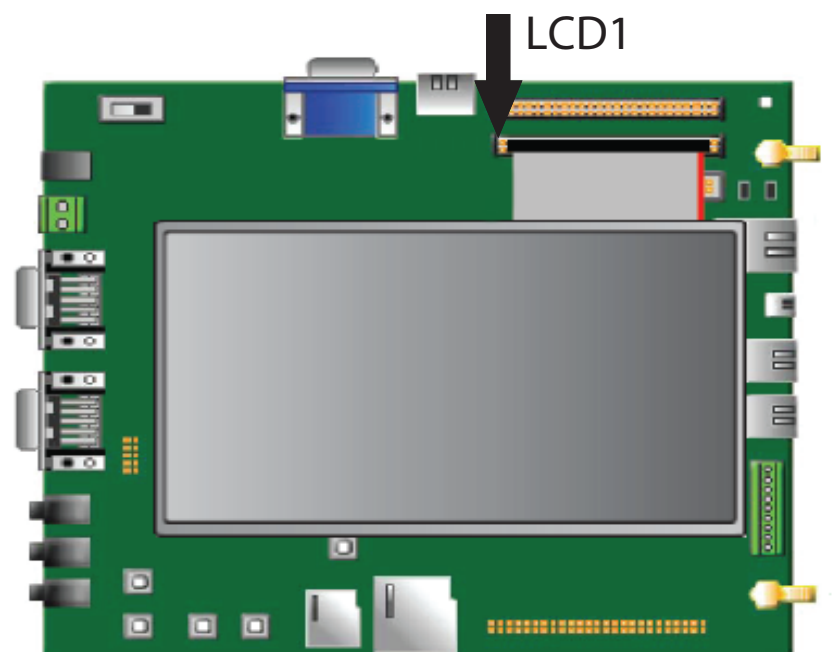
**a** Locate the four LCD mounting holes on the development board.



**b** Align the feet of the LCD with the mounting holes and secure the LCD on the development board using screws.



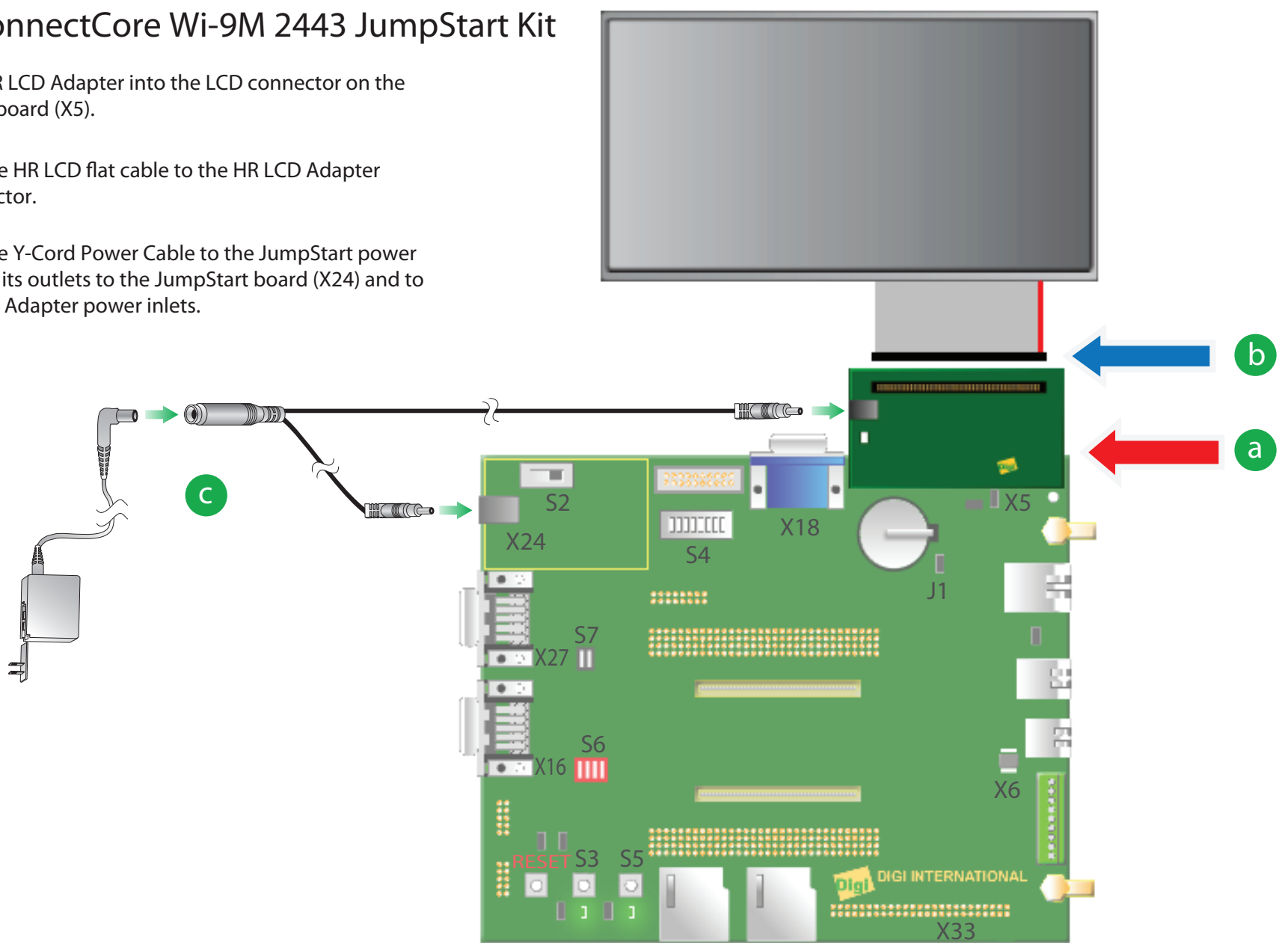
**c** Connect the 80-pin flat cable to Connector LCD1 on the development board.



**Note:** If necessary, please refer to the Hardware Reference Manual for additional information about switch/jumper settings on your development board.

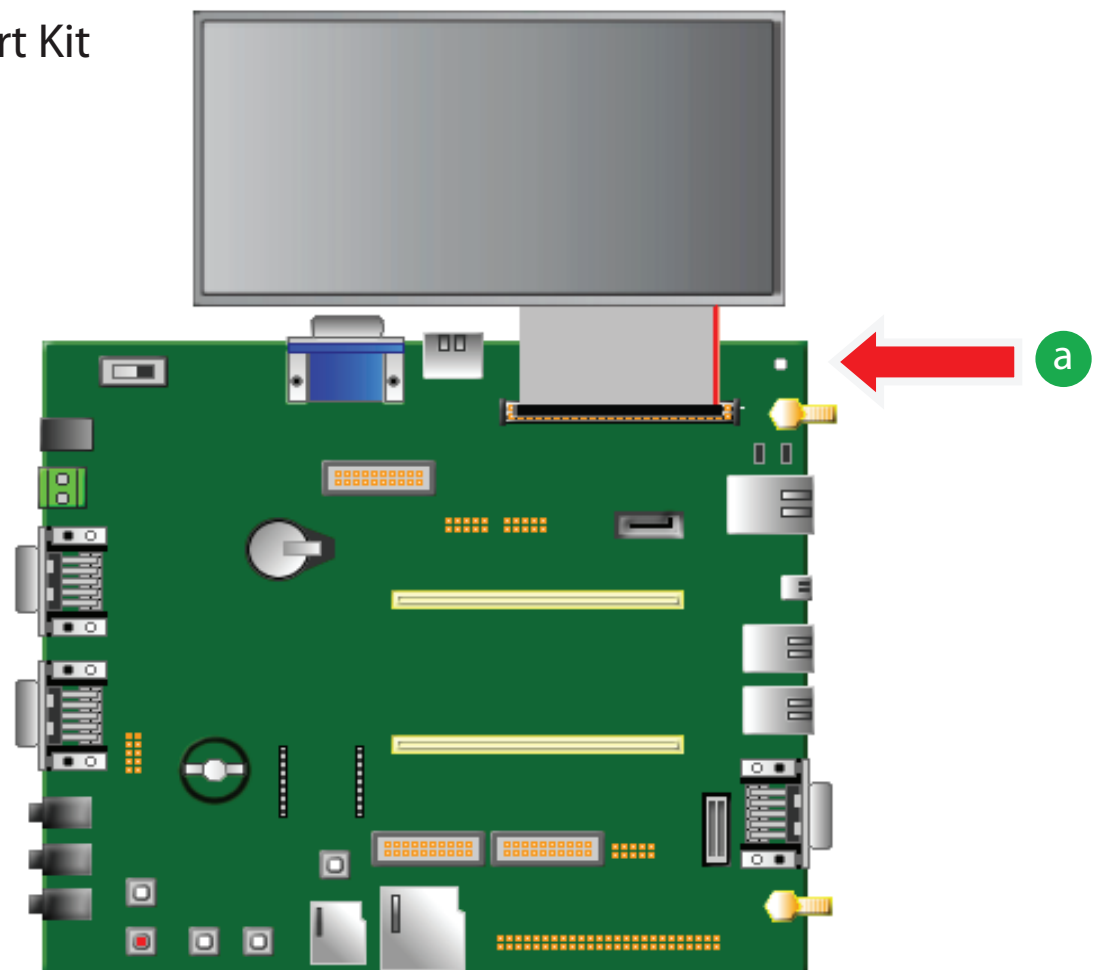
## 2.2 On a ConnectCore Wi-9M 2443 JumpStart Kit

- a Plug the HR LCD Adapter into the LCD connector on the JumpStart board (X5).
- b Connect the HR LCD flat cable to the HR LCD Adapter LCD connector.
- c Connect the Y-Cord Power Cable to the JumpStart power supply and its outlets to the JumpStart board (X24) and to the HR LCD Adapter power inlets.



## 2.3 On a ConnectCore Wi-i.MX53 JumpStart Kit

- a Connect the 80-pin flat cable to connector PARALLEL LCD (P1) on the development board.



## 3 Download Documentation

- a To obtain a materials list and installation instructions specific to your platform, go to <http://www.digi.com/support/>.
- b From the "Select a Product" drop-down box, select "Application Kits".

## 4 What's Next?

- a Refer to the provided documentation for hardware and/or operating system specific information.