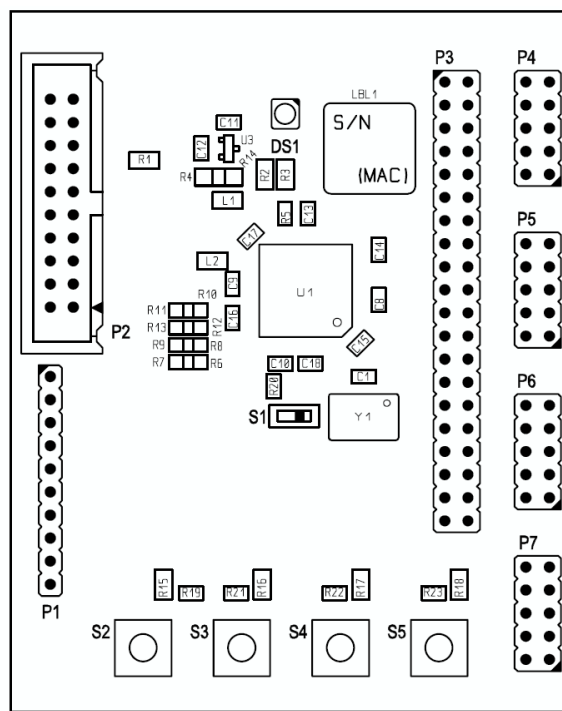


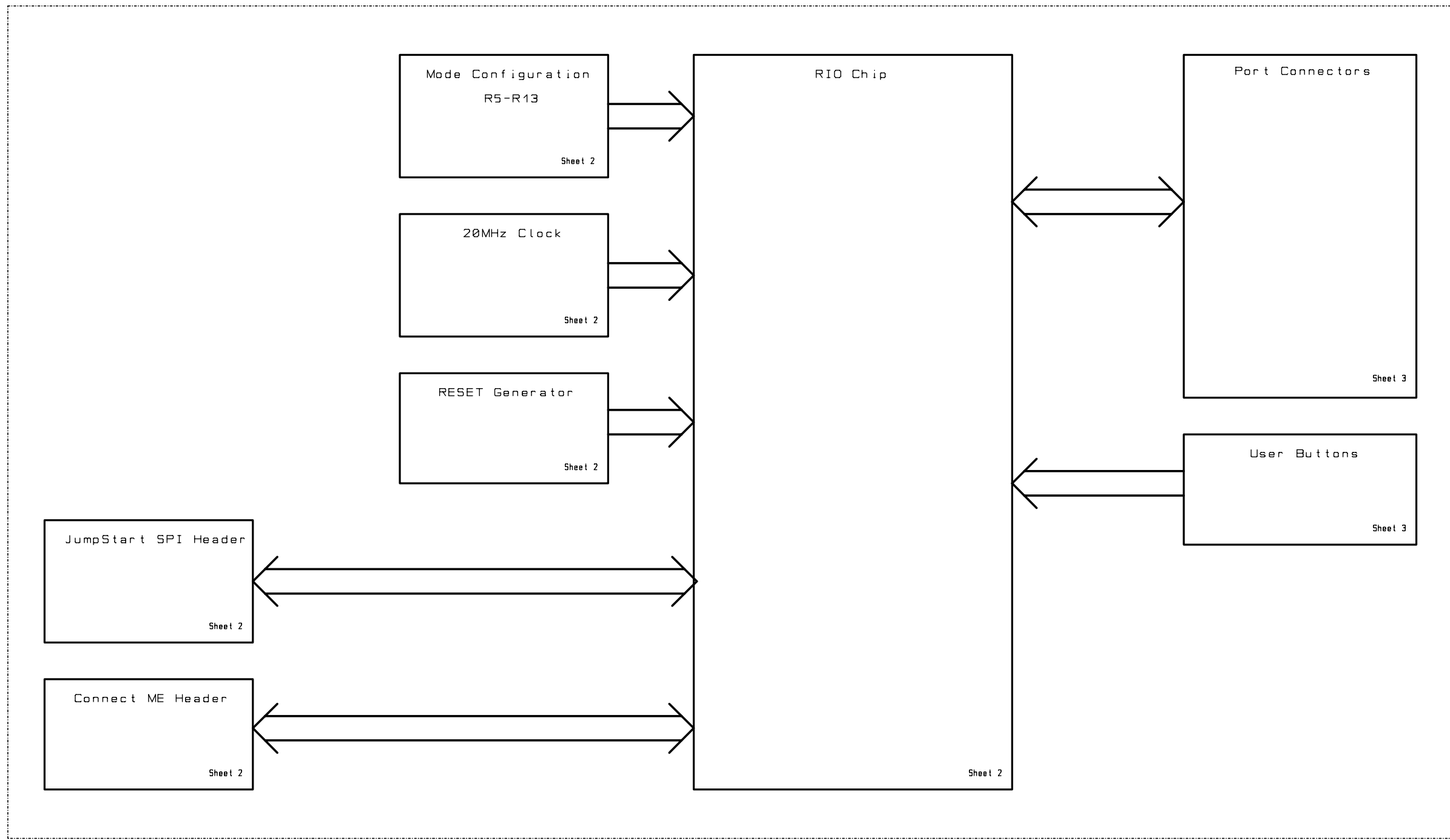
# RIOAPJS\_0

## Layout Version


Note: This layout version is for reference only. Some parts may not be equipped or may have different values.



# RIO Application Board

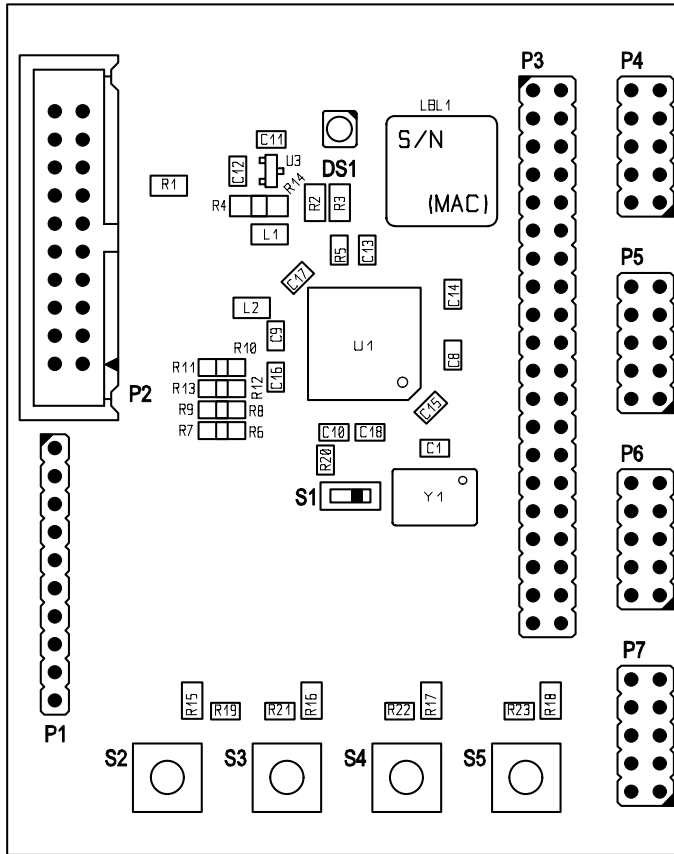


All rights reserved © Digi International Inc.

Usable for:							Scale:		Filename: RIOAPJS_0.scm	
							RIOAPJS_0 Layout Version		Note: This layout version is for reference only. Some parts may not be equipped or may have different values.	
				Date		Name		Title:		
				Designer		KR		Overview		
				Approved						
				ISO						
								Partnumber:		Sheet
								L03144		1
										of
										3
Rev.	Modification	Date	Name					Provided for:		Provided by:





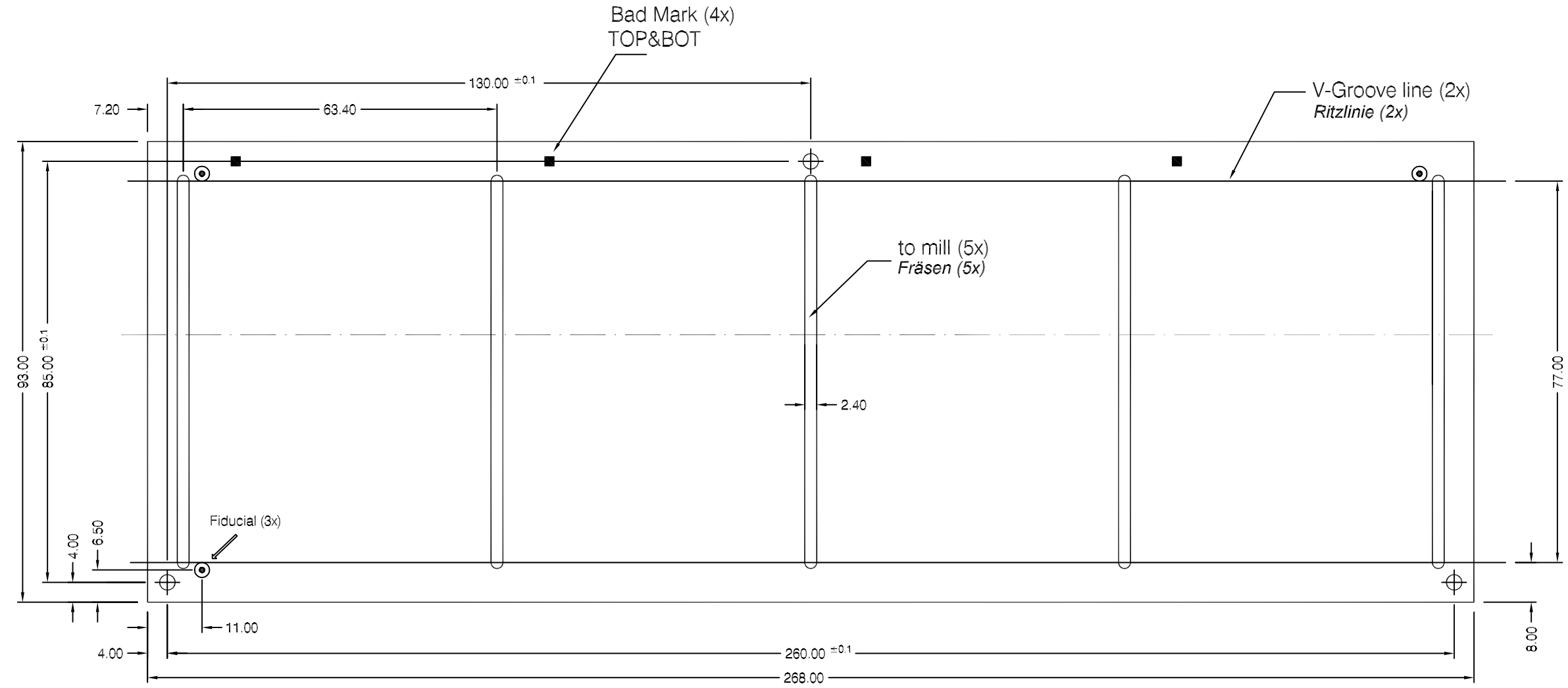


RIOAPJS\_0 Placement TOP 20.06.08

All rights reserved © Digi International Inc.

Usable for:				Scale: 1.5		Filename: RIOAPJS_0.pcb	
				RIOAPJS_0 Layout Version Note: This layout version is for reference only. Some parts may not be equipped or may have different values.			
				<b>Date</b>	<b>Name</b>	<b>Title:</b>	
				Designer	20.06.2008	XX	
				Approved		Placement TOP Side	
				ISO			
						<b>Partnumber:</b>	
						L03144	
						1	
<b>Rev.</b>	<b>Modification</b>	<b>Date</b>	<b>Name</b>	<b>Provided for:</b>		<b>Provided by:</b>	
						of 2	

All rights reserved  
© Digi International Inc.



**CAUTION:**

- Offset between the reference drills and the fiducials:  $\leq 0,1\text{mm}$ .
- Offset between the milled board outline and the fiducials:  $\pm 0,2\text{mm}$ .
- Offset between the V-grooved board outline and the fiducials:  $\pm 0,3\text{mm}$ .
- Plated holes and not plated holes must be drilled in one step!
- Fiducials and not plated holes are already defined in the gerber/drill files!
- The panel frame must be filled with copper.
- Defective panels must be marked on top and bottom side with a matt black pen marker on the bad mark location.
- Max. 2 defective boards per panel.

**BEACHTEN:**

- Versatz der Referenzbohrungen zu den Fiducials  $\pm 0,08\text{mm}$ .
- Versatz der Fräskontur zu den Fiducials  $\pm 0,2\text{mm}$ .
- Versatz der Ritzkontur zu den Fiducials  $\pm 0,3\text{mm}$ .
- DK- und NDK-Bohrungen in einem Arbeitsgang bohren!
- Fiducials und NDK-Bohrungen sind bereits in den Gerber/Drill-daten vorhanden!
- Den Rahmen mit Kupfer füllen.
- Defekte Leiterplatten mit dunklem matten Farbstift beidseitig auf Bad Mark markieren.
- Max. 2 defekte Leiterplatten pro Nutzen.

All dimensions in mm. Alle Messangaben in mm. Overall tolerance: $\pm 0,1\text{mm}$ . Allgemeine Toleranz: $\pm 0,1\text{mm}$ .				Scale: 1:1		Filename: RIOAPJS_0_NU.DWG	
				<b>RIOAPJS_0</b>			
				Title: Panel with 4 PCB 61x77 Nutzen 4-fach 61x77			
				Partnumber: L03144		Sheet 1 of 1	
				Provided for:		Provided by:	
Rev.	Modification	Date	Name				