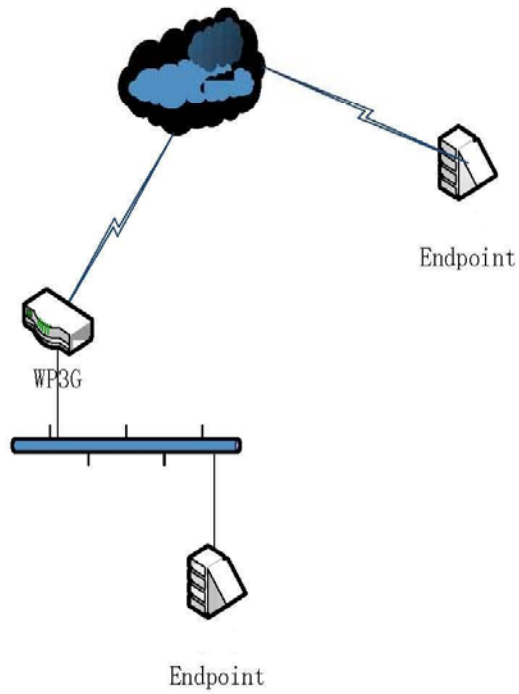


## How to set WiPoint 3G to bridge mode

*Object:* configure WiPoint 3G into bridge mode

*Topology:*



### *Configuration:*

On the WiPoint 3G

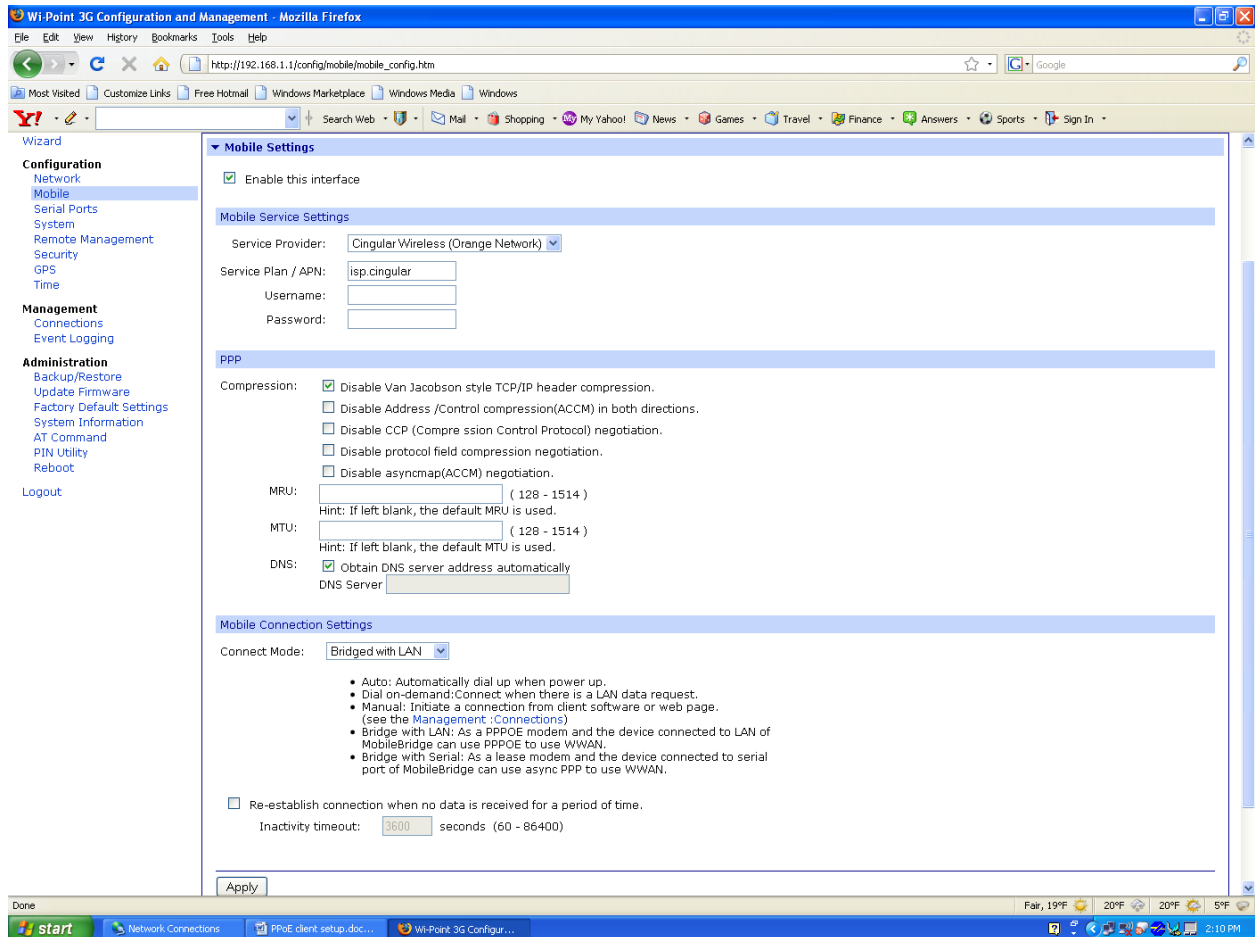
Configuration - Mobile - Mobile connection settings

Change the connect mode into "Bridged with LAN"

Save and reboot the router

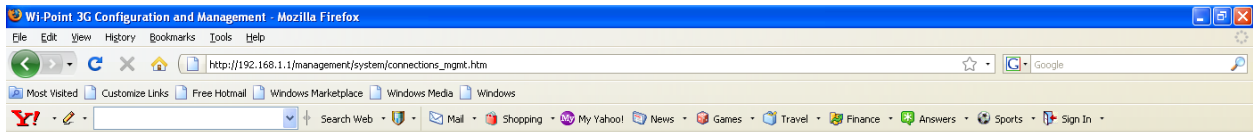
This allows the Mobile IP to be given to the device that is connected to the Wi-Point3G's LAN interface.

I.E. turns the Wi-Point3G into a working similar to a DSL modem using PPPoE.



Under Mobile Connection Settings change the drop down menu from Auto to Bridged with LAN.

Click Apply and Reboot Unit.



## Wi-Point 3G Configuration and Management

# DIGI Wi-POINT 3G

- Home
- Wizard
- Configuration**
  - Network
  - Mobile
  - Serial Ports
  - System
  - Remote Management
  - Security
  - GPS
  - Time
- Management**
  - Connections**
  - Event Logging
- Administration**
  - Backup/Restore
  - Update Firmware
  - Factory Default Settings
  - System Information
  - AT Command
  - PIN Utility
  - Reboot
- Logout

### Connections Management

Virtual Private Network (VPN) Connections

Action	Description	Remote Address	Status
No reservations currently configured			

### Mobile Connection

Action	Description	Local Address	Mask	Gateway	Status
<input type="radio"/>	PCMCIA	0.0.0.0	0.0.0.0	0.0.0.0	bridged
<input type="radio"/>	Serial Port	0.0.0.0	0.0.0.0	0.0.0.0	united

Copyright © 1996-2008 Digi International Inc. All rights reserved.  
[www.digi.com](http://www.digi.com)



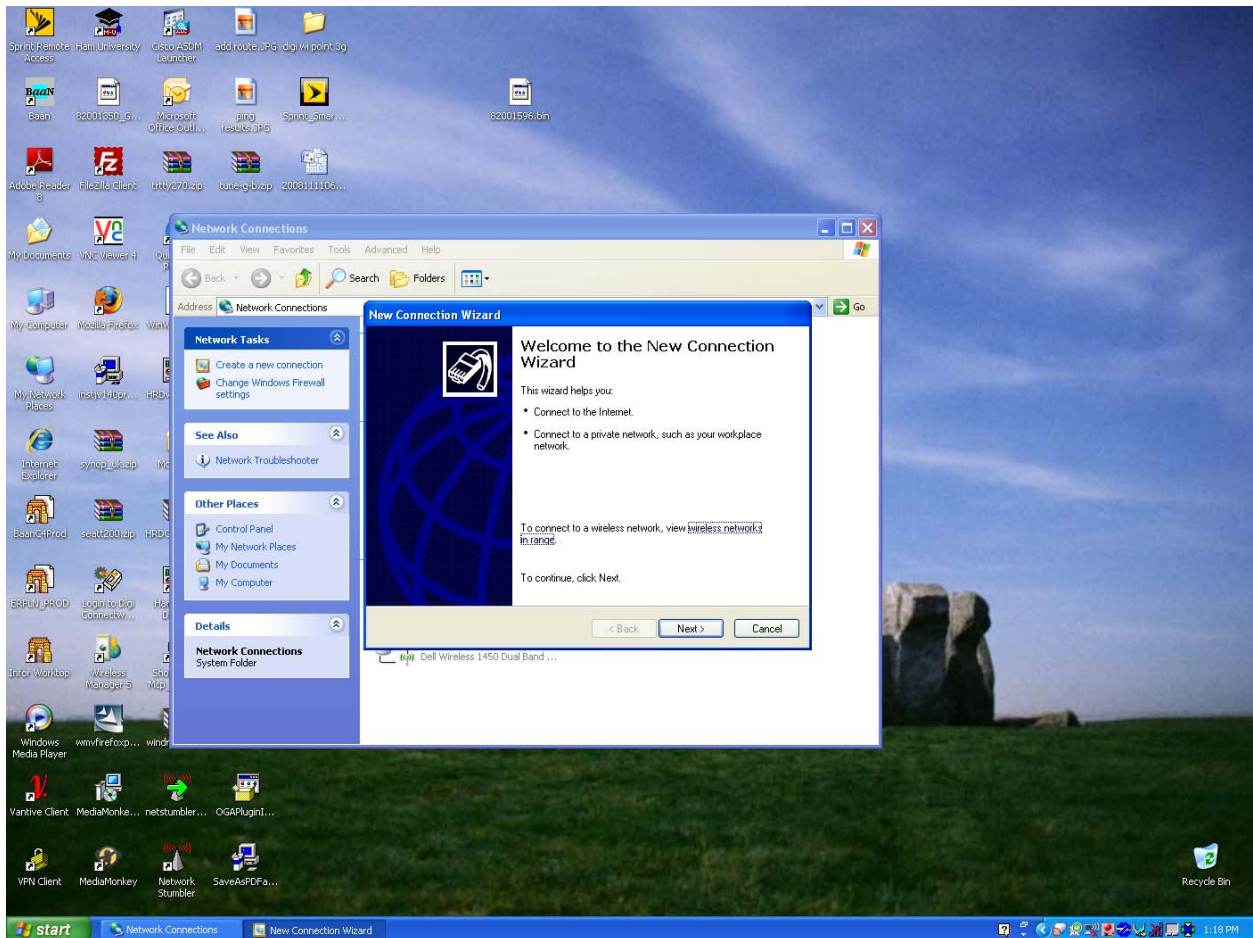
Management---→ Connections Page will show that the PCMCIA interface is bridged.

Setting up PPOE Client in Windows XP.

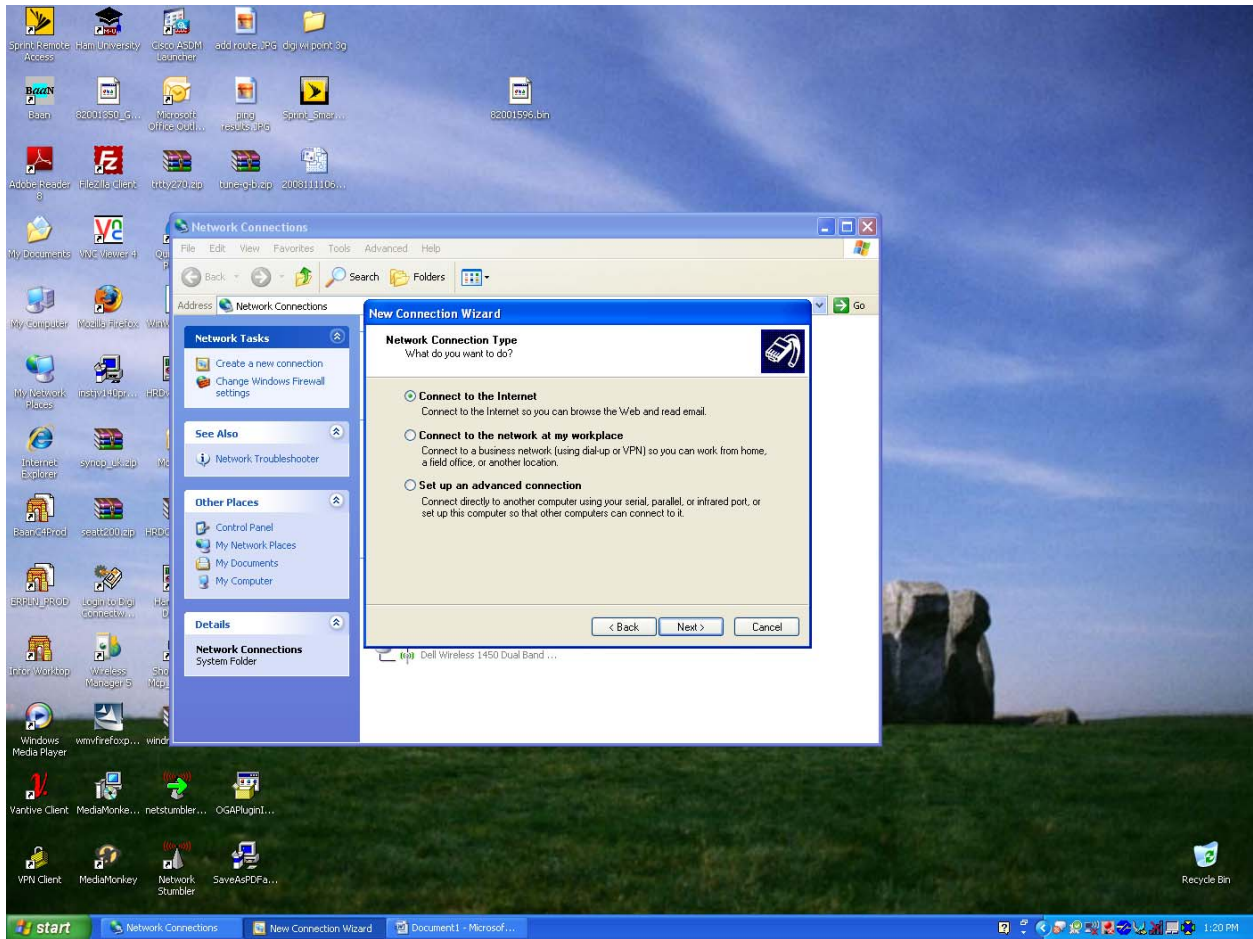
The device that is connected to the Wi-Point3G's LAN port **has** to initiate the PPP connection.

This is used as an example on how to do a PPPoE connection with Windows.

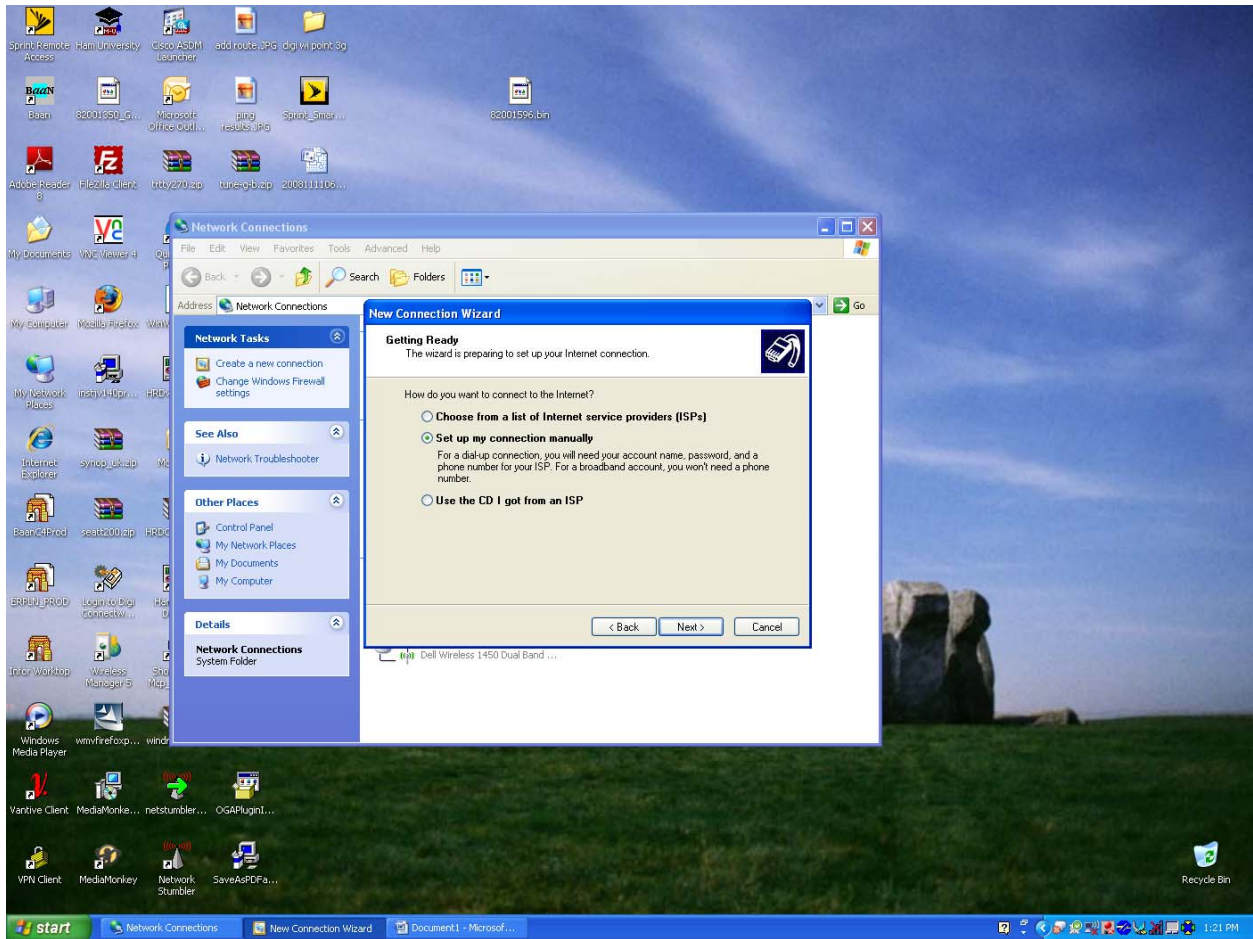
A router setup will be similar. Consult your router's document on how to setup a PPPoE connection.



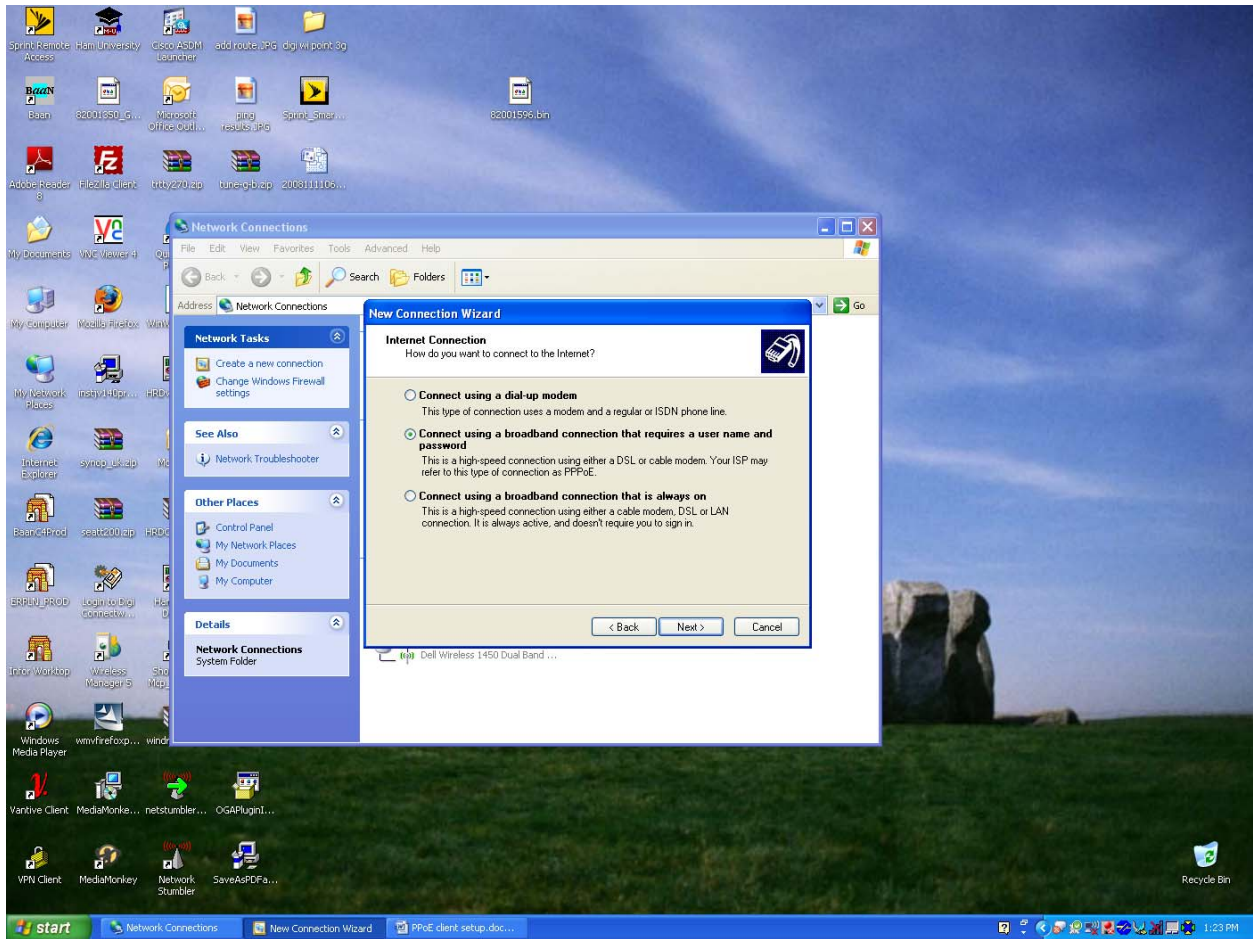
Run New Connection Wizard



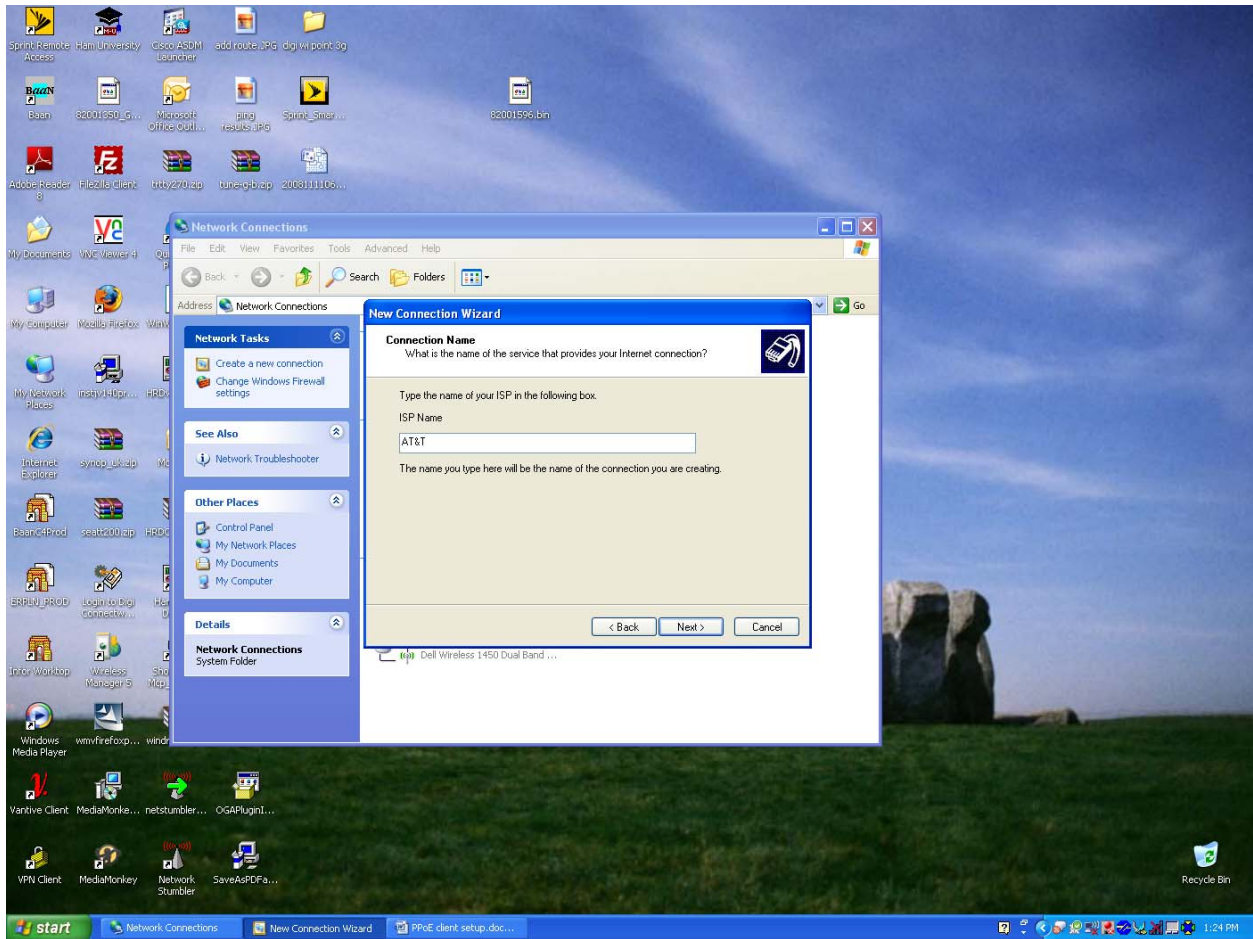
Select Connect to Internet



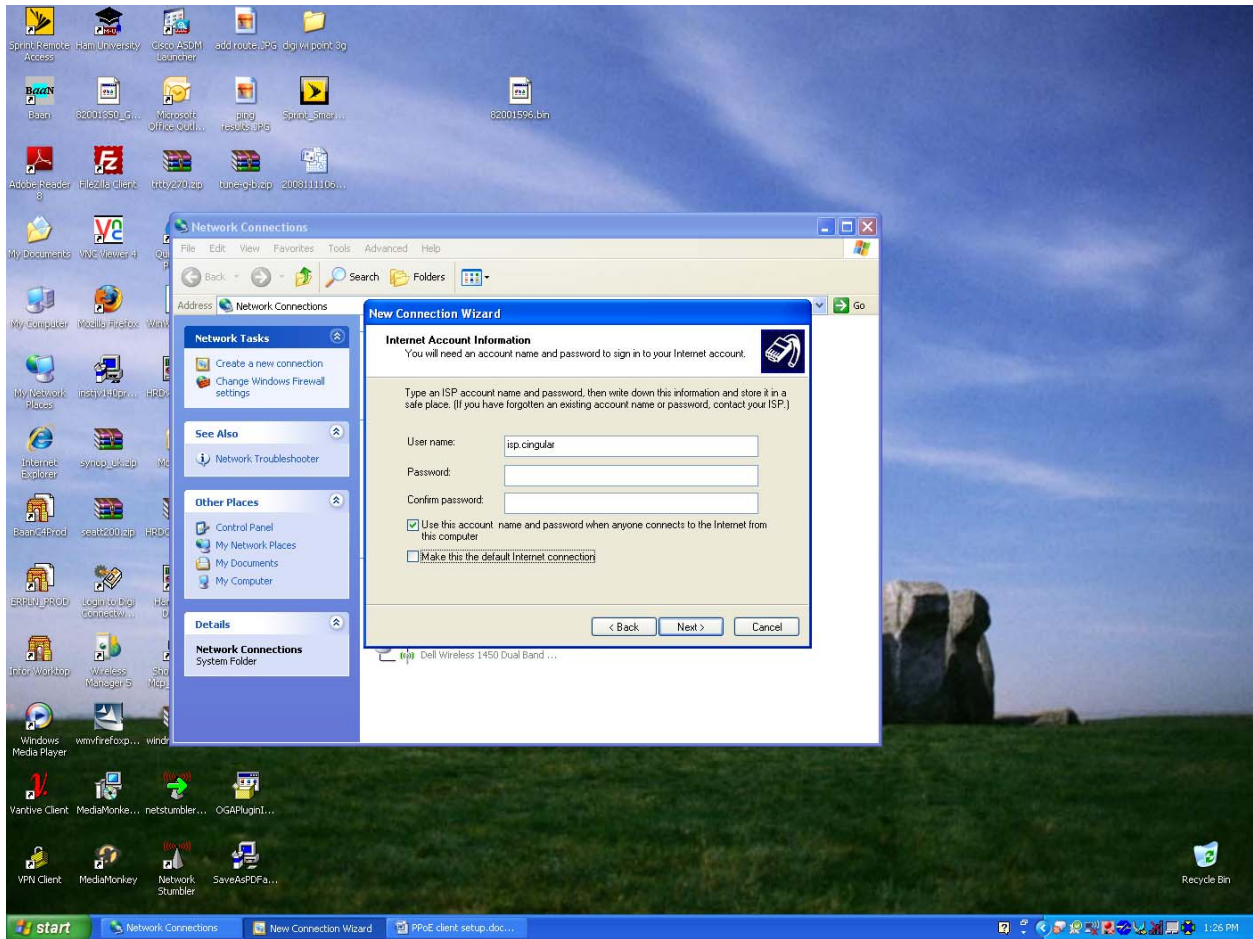
Select Setup my connection manually



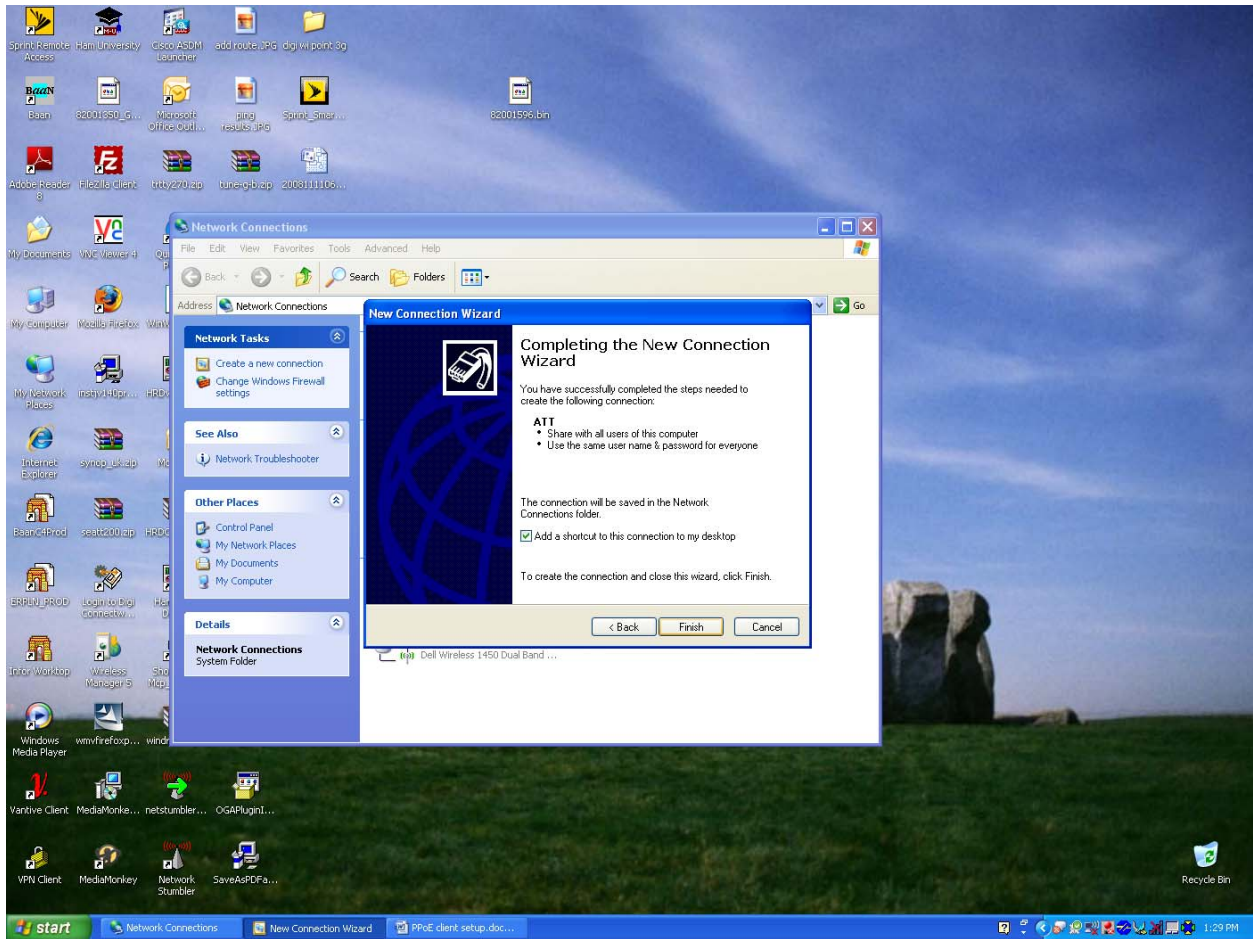
Select Connect using a broadband connection that requires a username and password.



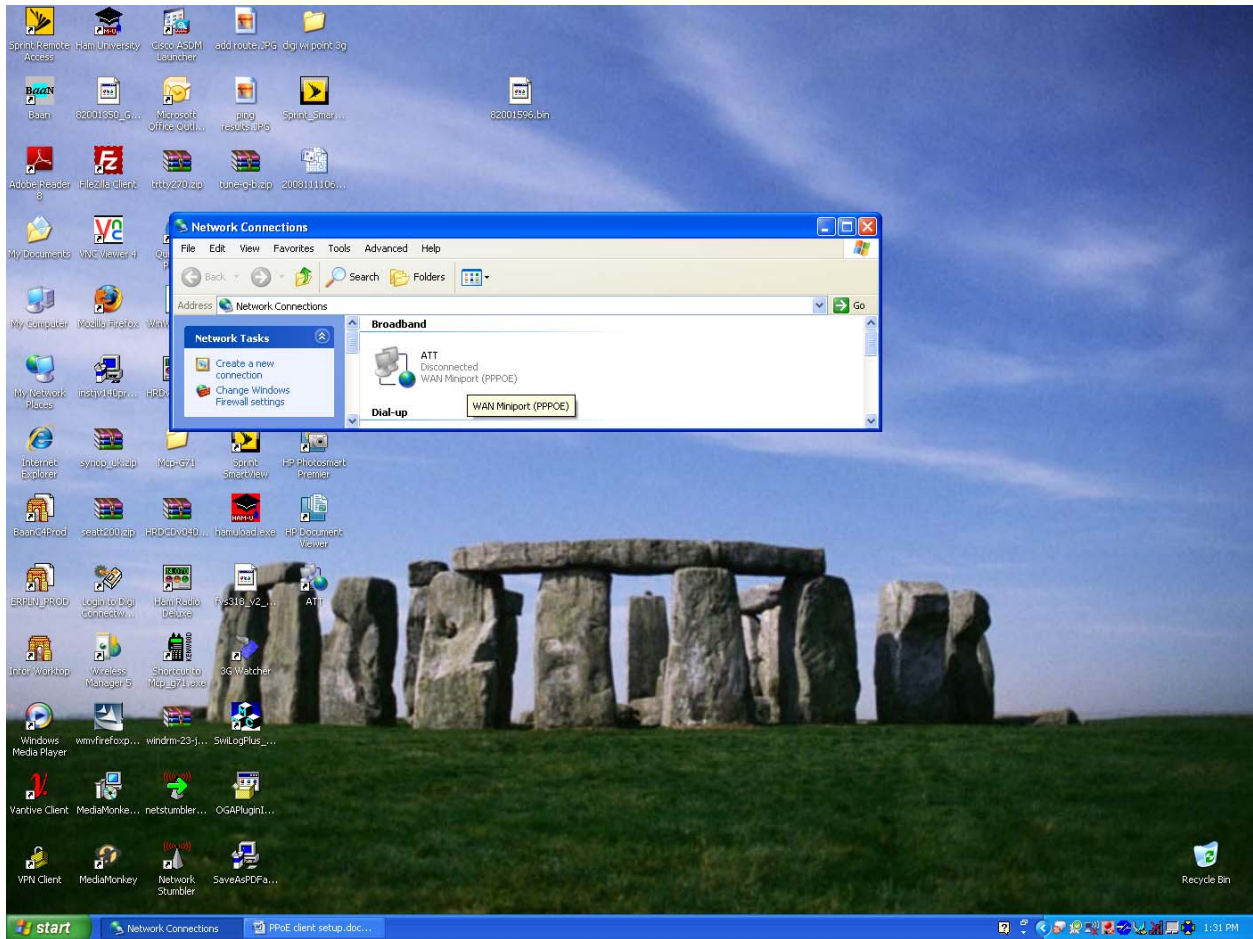
Type name of ISP service provider



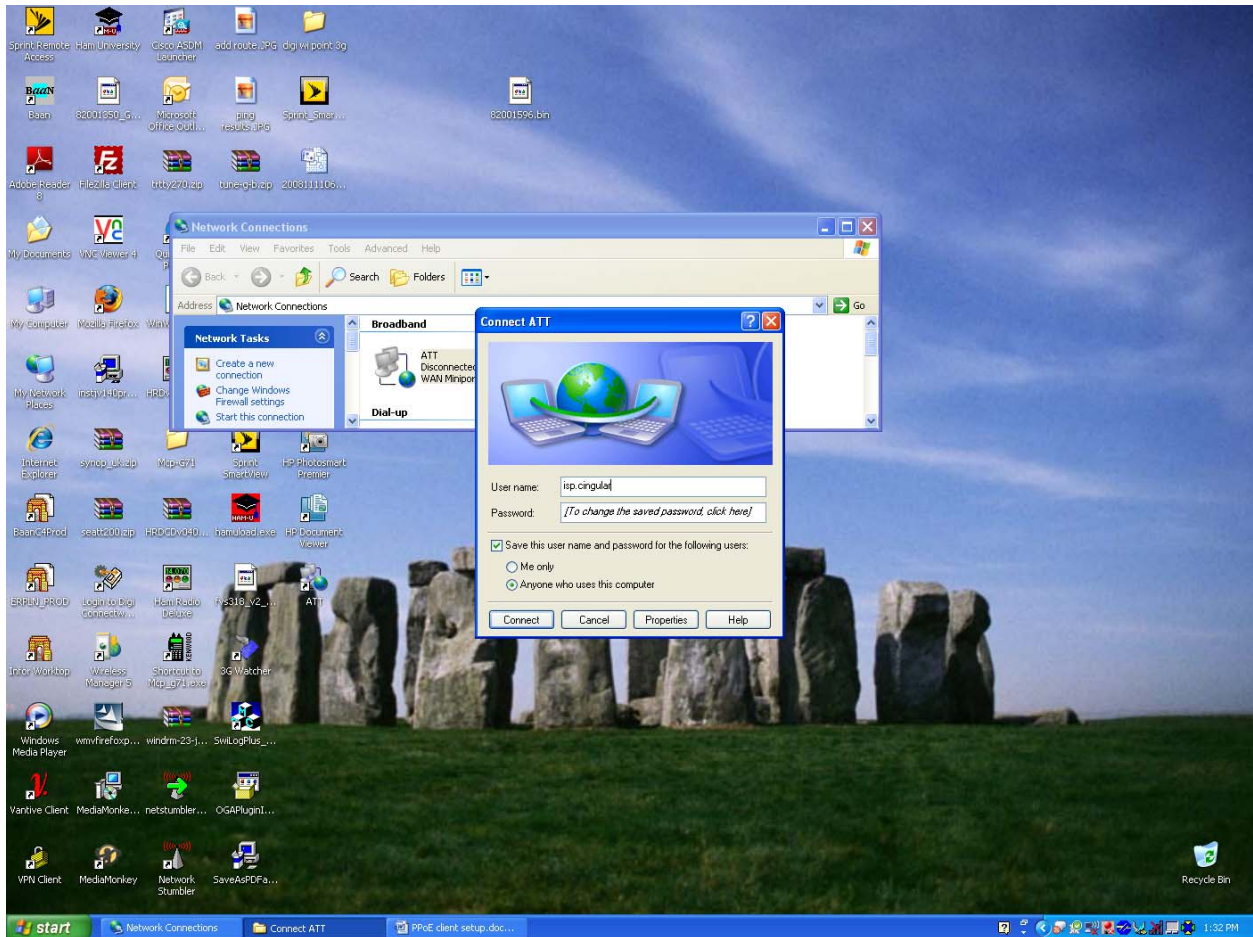
Enter in username and password



Click finish

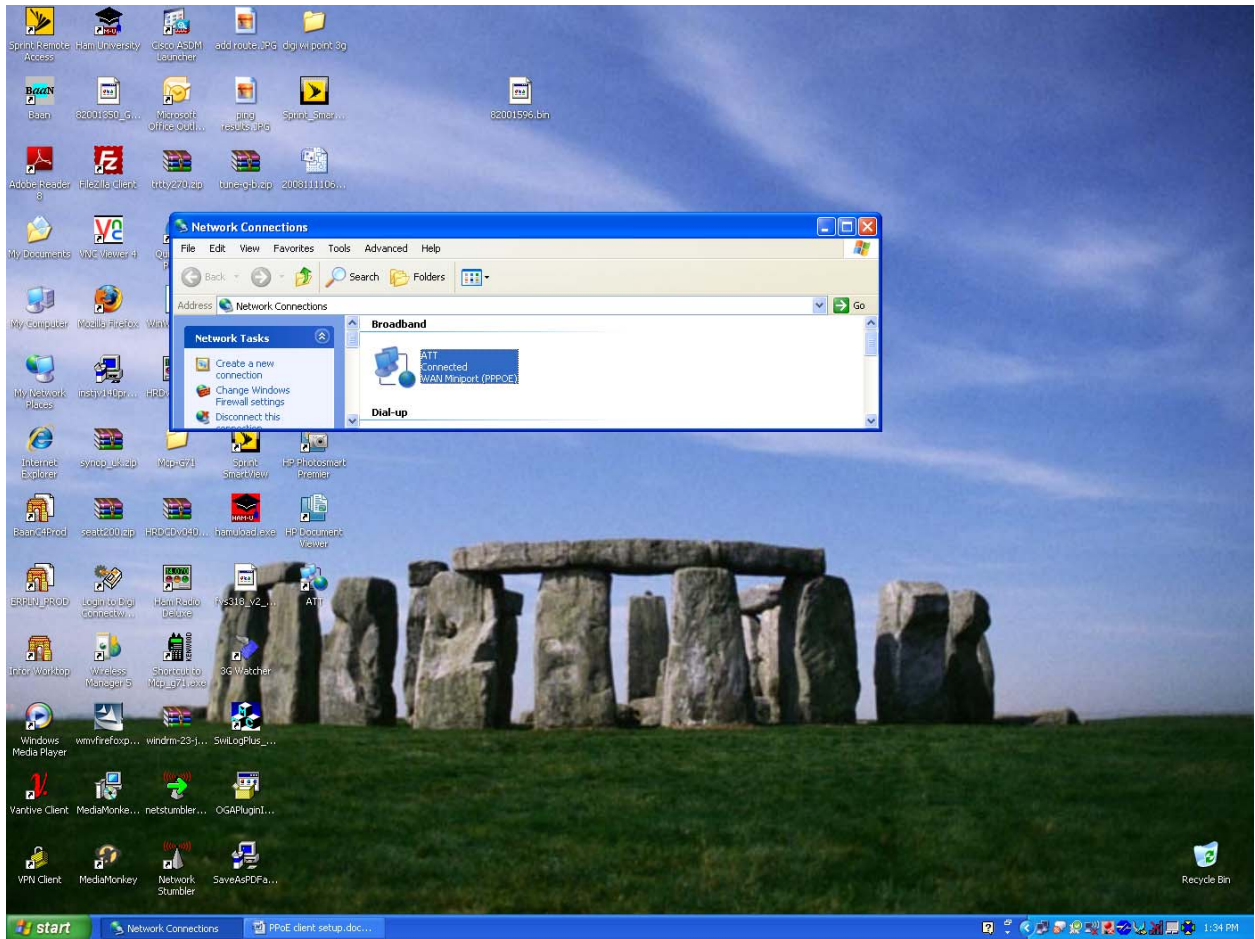


The Broadband connection should now show up under Broadband.

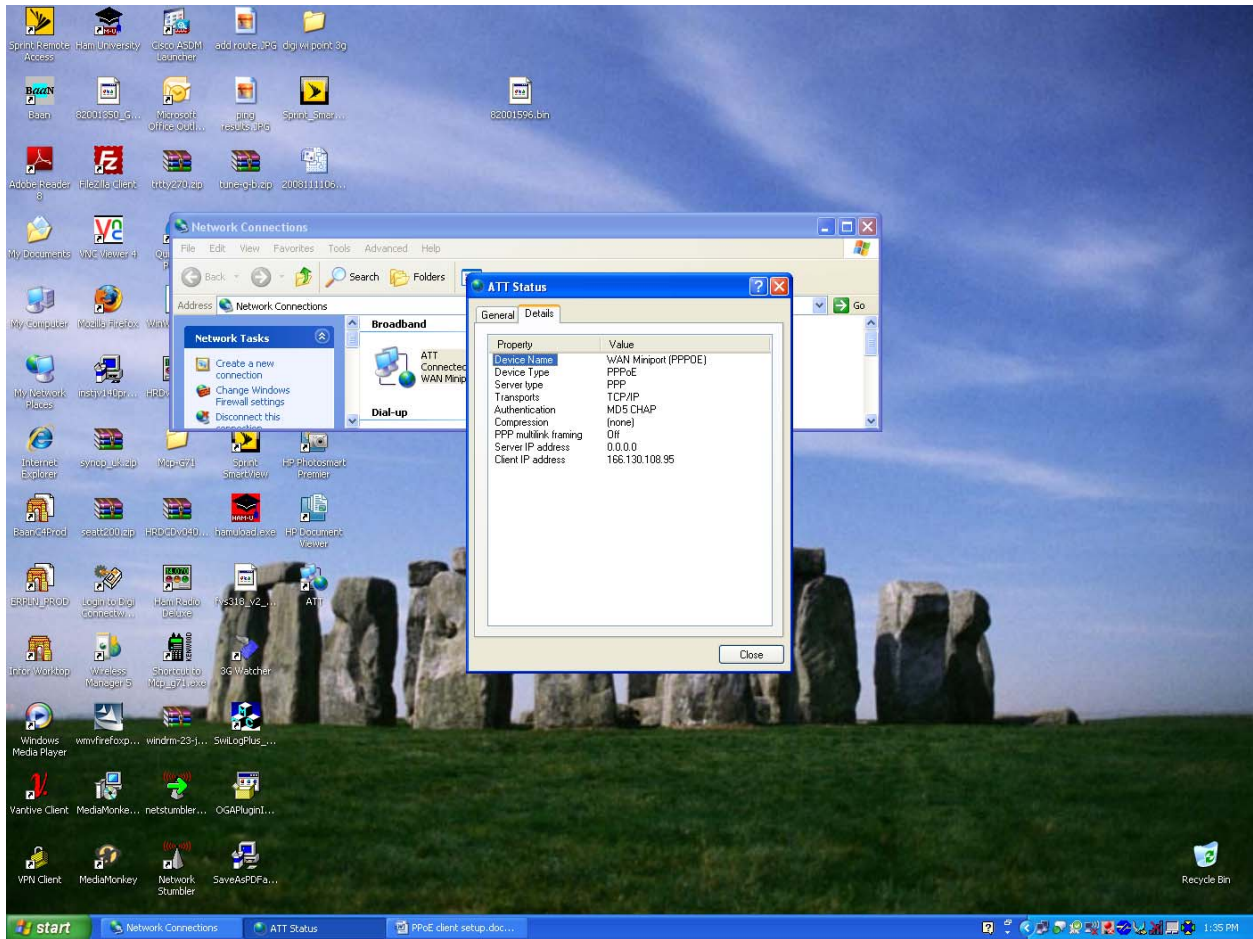


Double Click on the Broadband connection

Login with your Username and Password



Broadband Connection should show connected.



Under the Details Tab you will see the Client IP as the Mobile IP from the Carrier.