

PRODUCT NOTICE # 4-16-10-1



Subject:

HDMI Resistor Patch Instructions

Date:

4/16/10

Product:

ConnectCore Wi-i.MX51

Affected Part Numbers:

Part Number	Description
55001445-02	ConnectCore Wi-i.MX51 module

Notice:

A resistor component population issue prevents the module from booting properly when the HDMI interface on the development board is used.

The issue applies to modules with Digi P/N **55001445-02** revision **1P** only.

Please note that other product revisions are not affected by this issue.

The 0R series resistor R99 must be depopulated in order to enable the HDMI interface on the development board.

In order to aid in the visual inspection process and proper component depopulation, the close-up images provided below outline the location of the label indicating the Digi part number/revision, and the actual location of the resistor that needs to be depopulated.

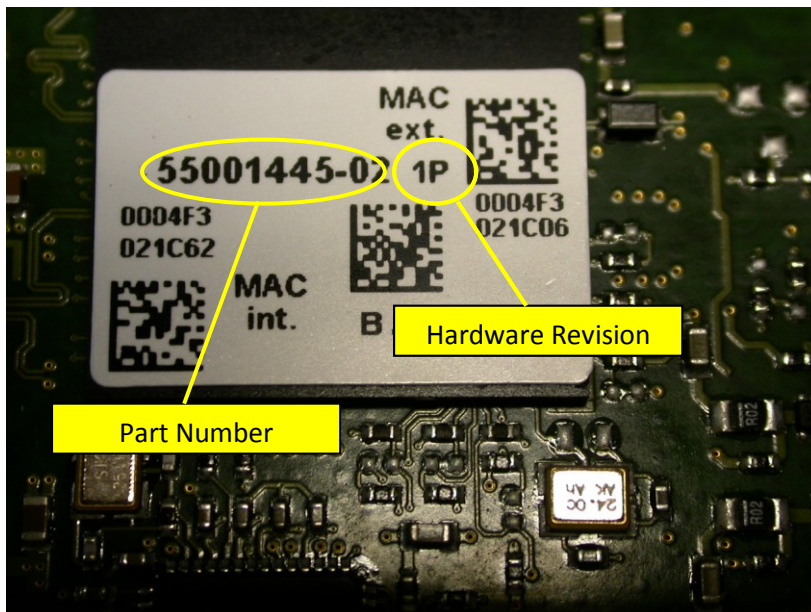


Figure 1: Identify part number and hardware revision on label (top of module)

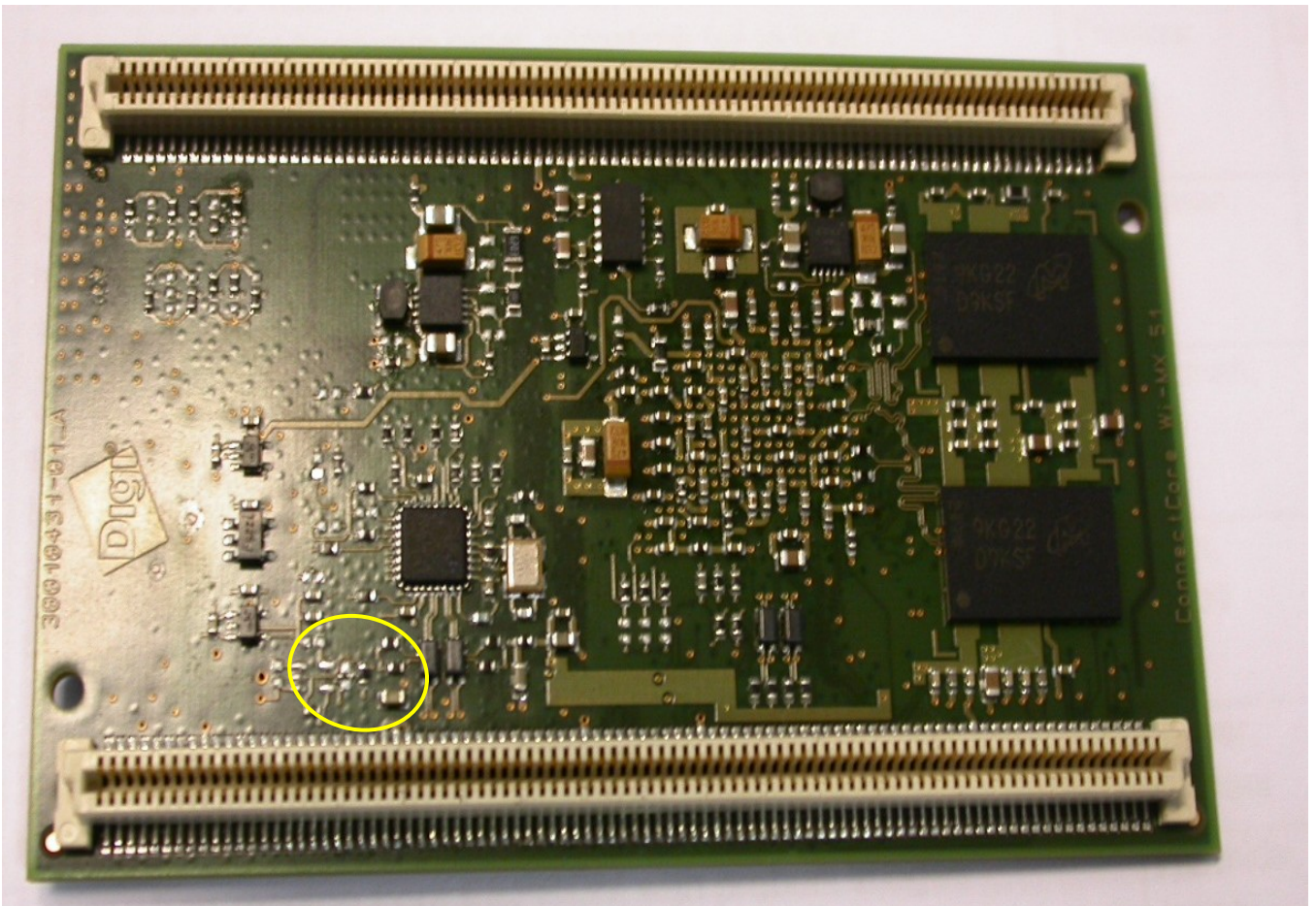


Figure 2: Identify general area of resistor location (bottom of module)

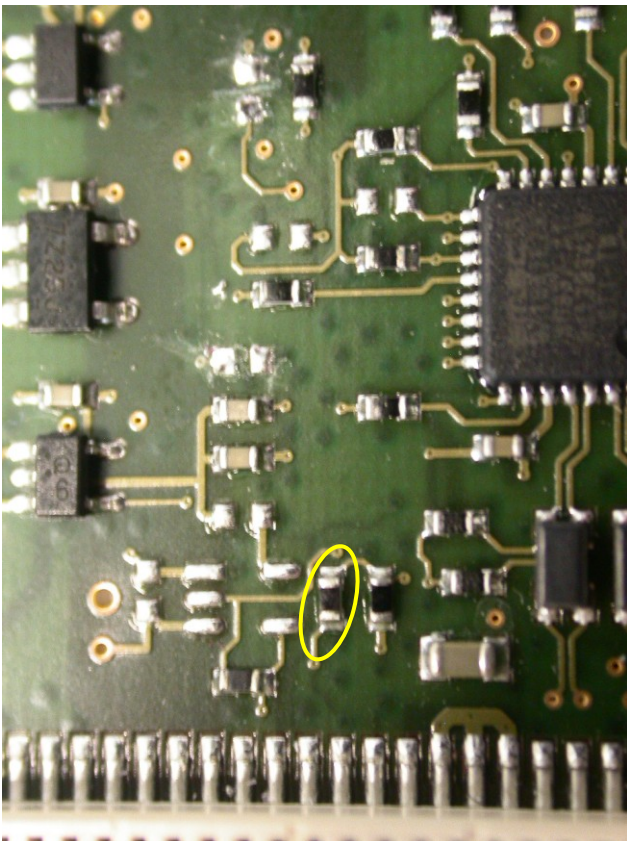


Figure 3: Close-up of resistor (R99) to be removed

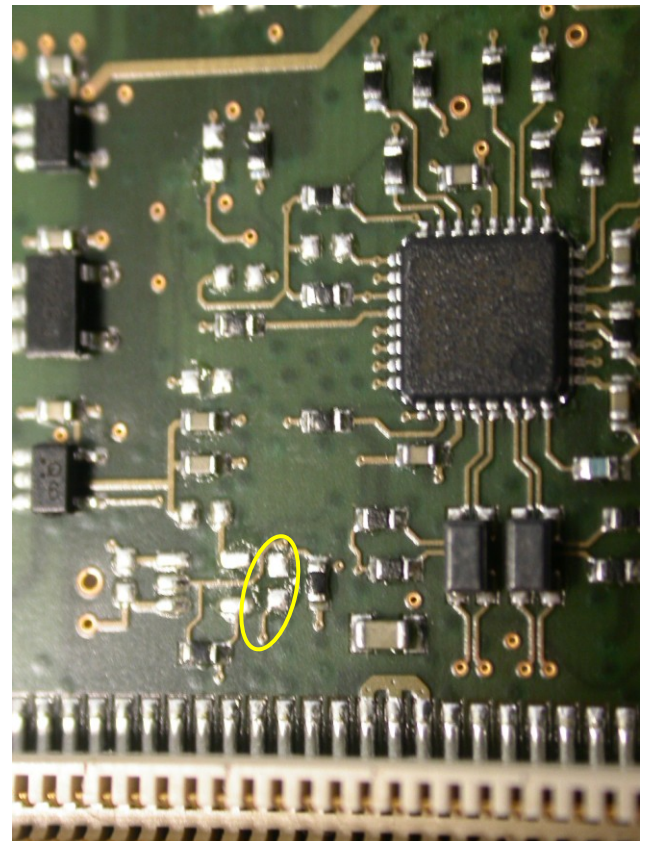


Figure 4: Close-up after resistor depopulation

Please note that even though the removal of the resistor is a minor modification, it should only be handled by an experienced individual familiar with the manual removal of surface mount components.

If you have any questions or concerns, please contact the Digi technical support experts online at www.digi.com/support.

Mike Rohmoser
Product Manager, Embedded Solutions
Digi International, 11001 Bren Rd E
Minnetonka, MN 55343, USA

miker@digi.com

Phone : +1 952 912 3424
Fax : + 1 952 912 4956