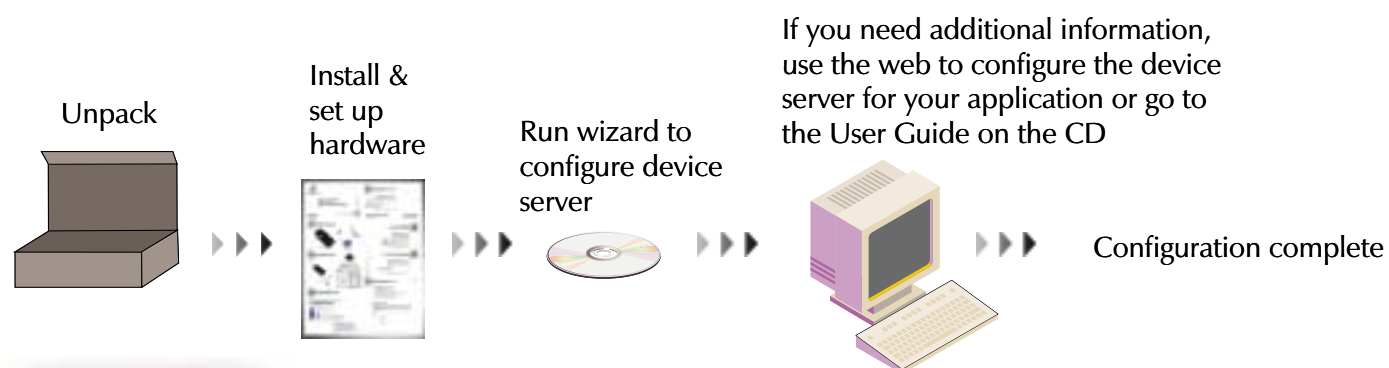


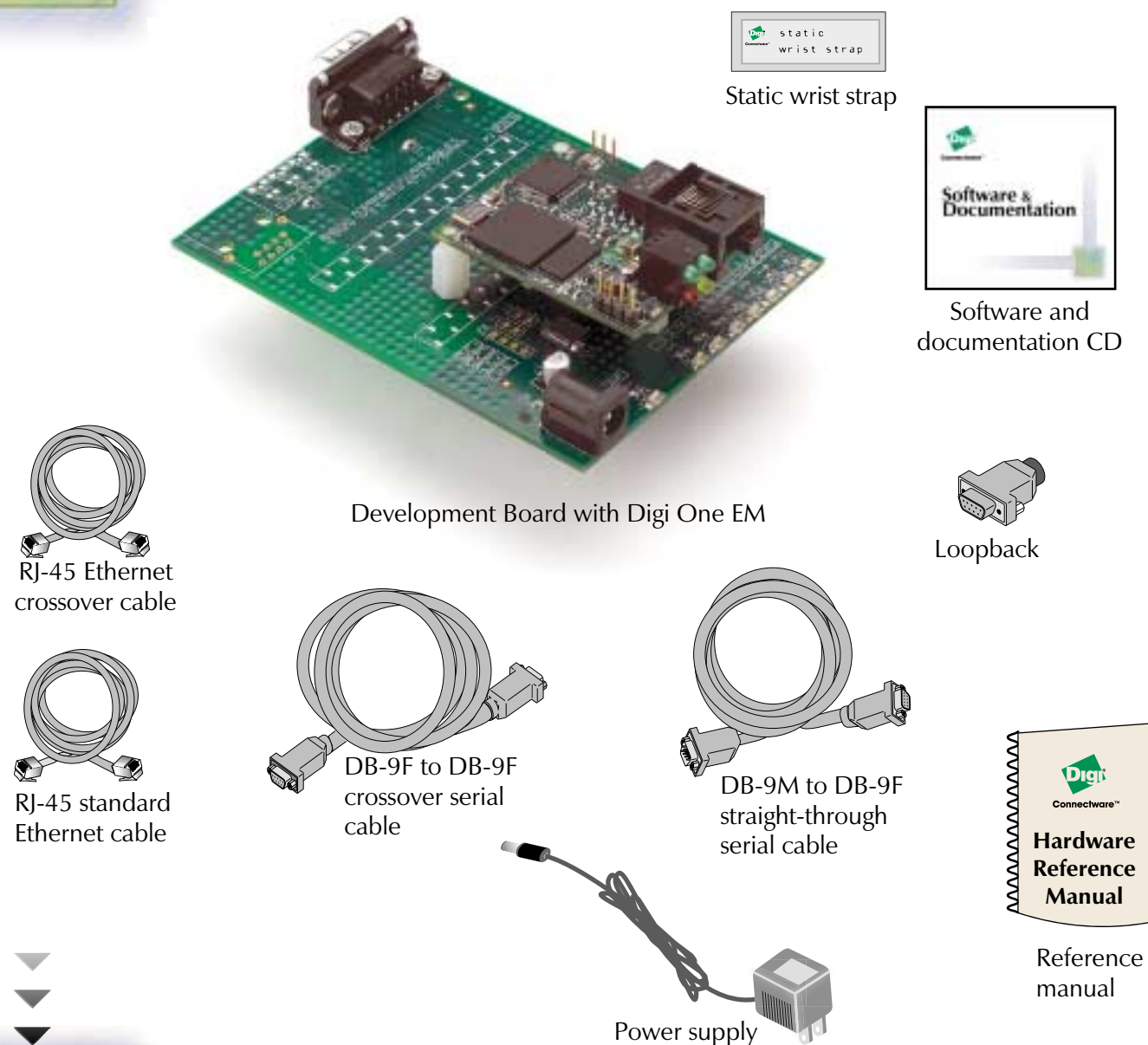


Connectware™

Quick Start Guide Digi One™ EM



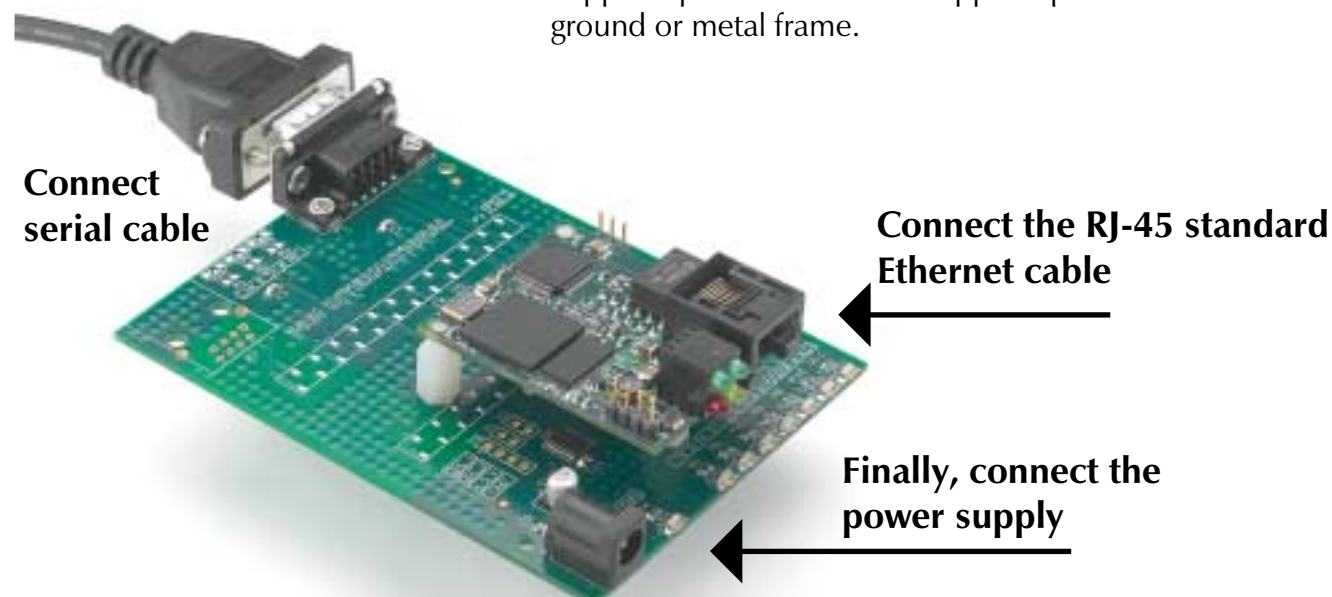
1 What's in the Box



2 Hardware Setup



To guard against damage to the Digi One EM due to Electrostatic Discharge (ESD), do not remove from its protective packaging until you have been properly grounded. To ground yourself, put the wrist strap on (included in the package), remove the liner from the copper tape and attach the copper tape to electrical ground or metal frame.



Visit us at www.digi.com



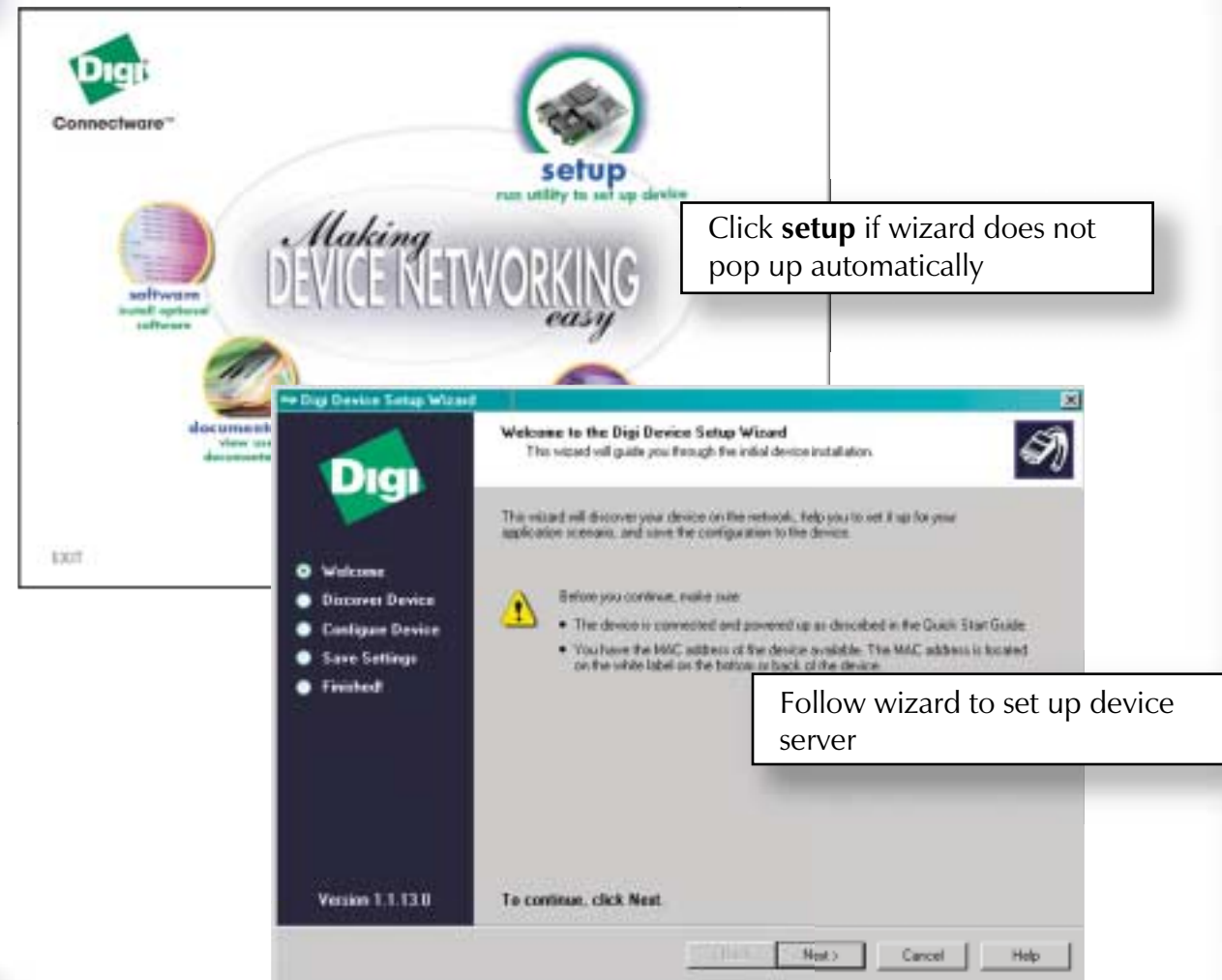
PN:(1P)9000272 C

3 Set up Device Server

Insert CD to configure the unit.

If CD does not start automatically, double-click **My Computer** > **CD-ROM drive**.

4 Set Up Device Server



5 Follow Wizard



Congratulations!

You have completed the wizard and your device server is now configured.

If you want more information,

- Go to the User's Guide on the CD under Documentation
- Refer to the Hardware Reference Manual or
- Open your browser and enter your IP address in the URL to log on to your device server. Default username is **root** and password is **dbps**.

From the web interface you can check your settings or make any changes specific to your environment.