



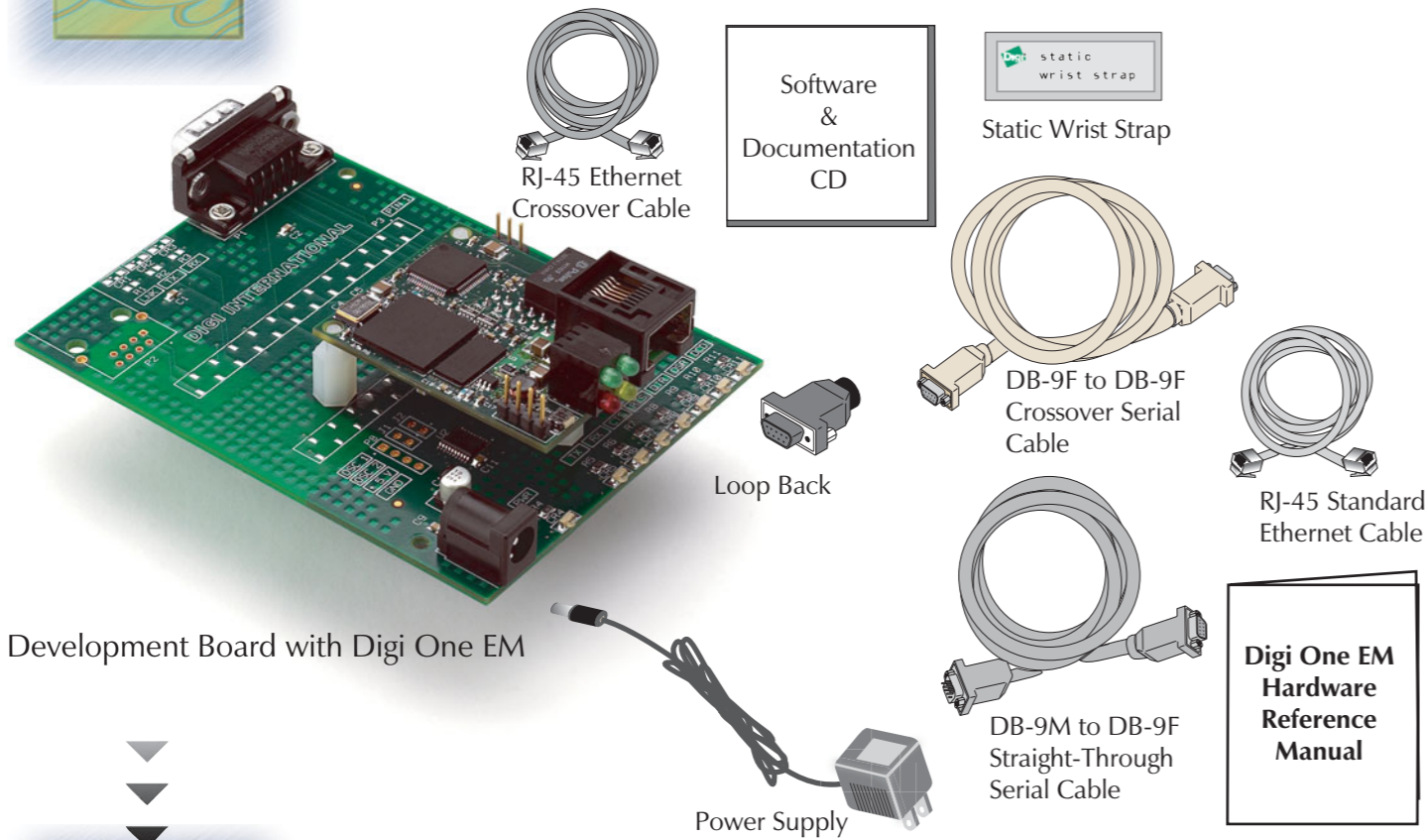
Connectware™

# Digi One™ EM Quick Start Guide

PN:(1P)9000272 B

### 1

## What's in the Box

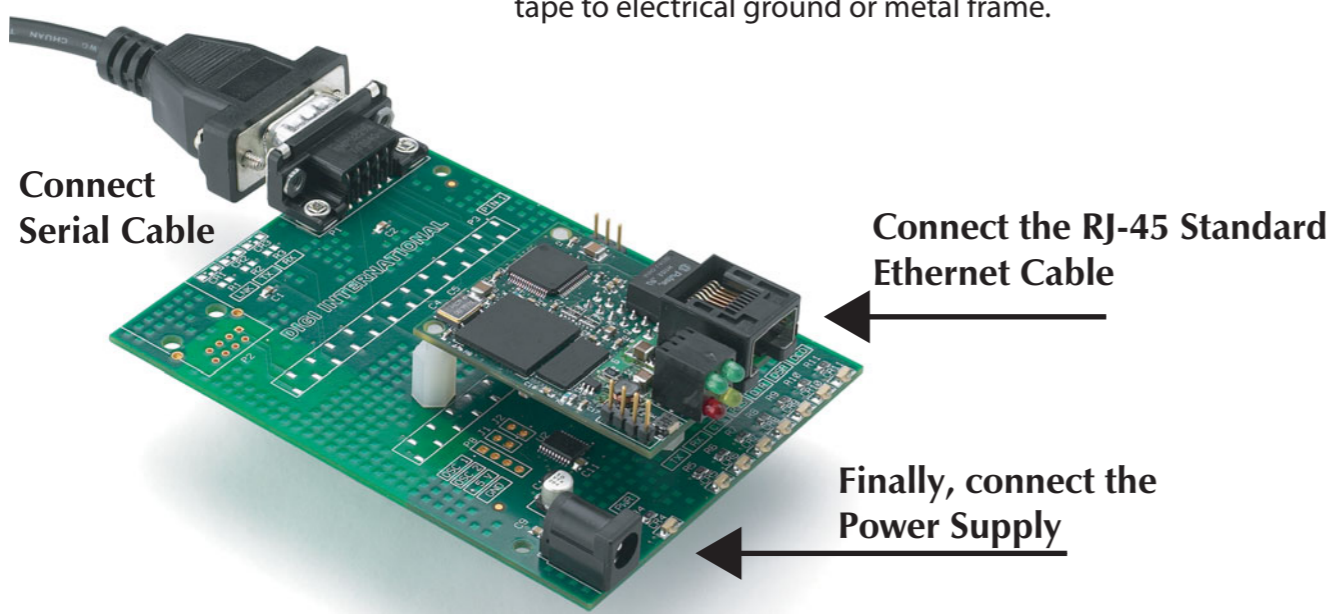


### 2

## Hardware Setup



To guard against damage to the Digi One EM due to electrostatic discharge (ESD), do not remove from its protective packaging until you have been properly grounded. To ground yourself, put the wrist strap on (included in the package), remove the liner from the copper tape and attach the copper tape to electrical ground or metal frame.



### 3

## Set up Device Server

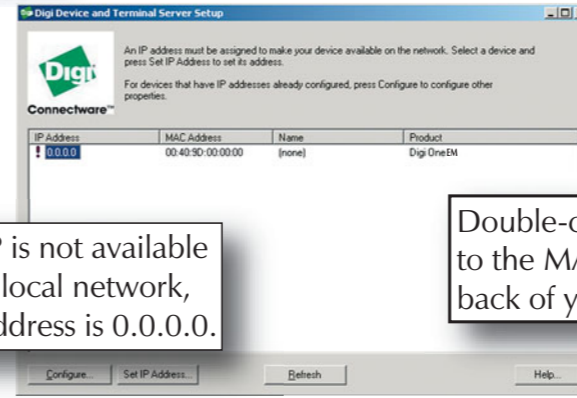
Insert CD to launch the application



If CD does not start automatically, double-click **My Computer** > **CD-ROM drive**.

### 4

## Locate Device Server



If DHCP is not available on your local network, the IP address is 0.0.0.0.

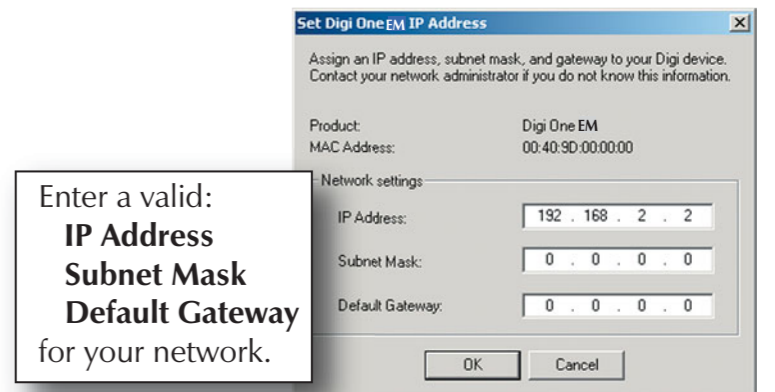
Double-click the IP address next to the MAC address found on the back of your device server.

If DHCP is available on your local network, the IP address is automatically set. Go to step 6.

If DHCP is not available

### 5

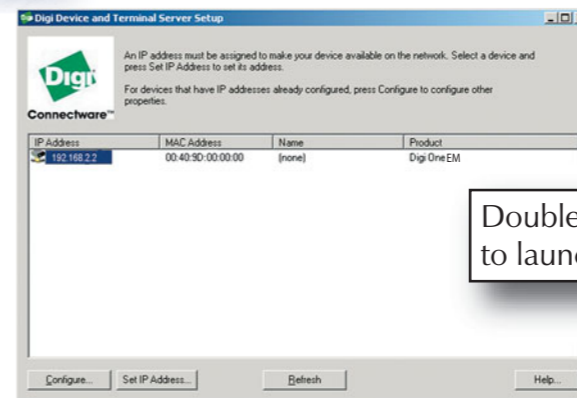
## Assign IP Address



Enter a valid:  
**IP Address**  
**Subnet Mask**  
**Default Gateway**  
for your network.

### 6

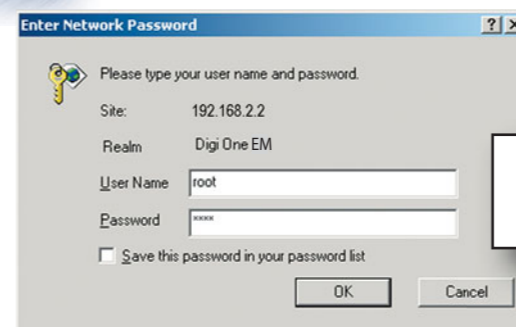
## Connect to Device Server



Double-click the IP address to launch your browser.

### 7

## Log on to Device Server



Enter:  
User Name **root**  
Password **dbps**

**Congratulations,**  
your Digi One EM is ready to be configured for your application.

