

Quick Start Guide

Digi TS Family

Digi One™ TS
PortServer™ TS 2/4 MEI

PortServer™ TS 8/16

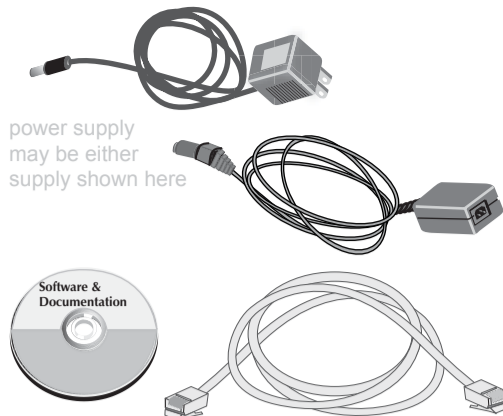
PortServer™ TS 2/4 MEI



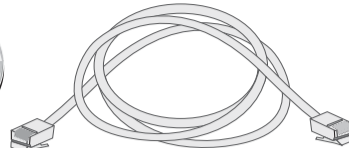
PortServer TS 4 MEI



PortServer TS 16



power supply
may be either
supply shown here



Ethernet cable not included



PN:(1P)90000563 A1

INSTALL 1, 2, or 4 Port

1 Set serial DIP switch according to your serial device requirements.

Switch Settings	EIA-232	EIA-422/485 Full-Duplex	EIA-485 Half-Duplex
Up/On	1 2 3 4	1 2 3 4 *	1 2 3 4 *
Down/Off	1 2 3 4	1 2 3 4	1 2 3 4

*If switch 4 is up, termination resistor connected. If down, termination resistor unconnected.

2 Connect serial device

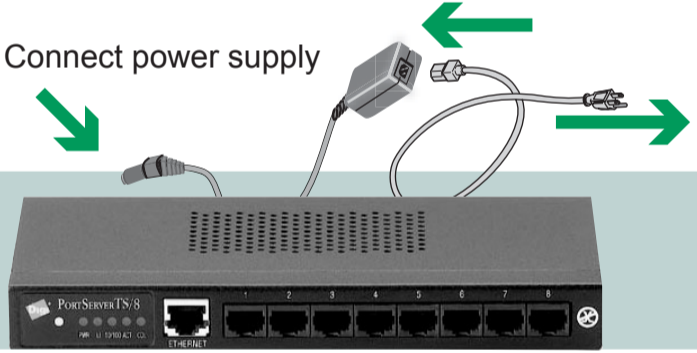


3 Connect Ethernet cable

4 Connect power supply

INSTALL 8 or 16 Port

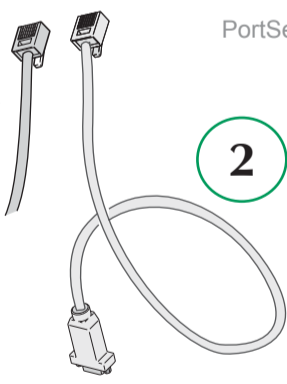
3 Connect power supply



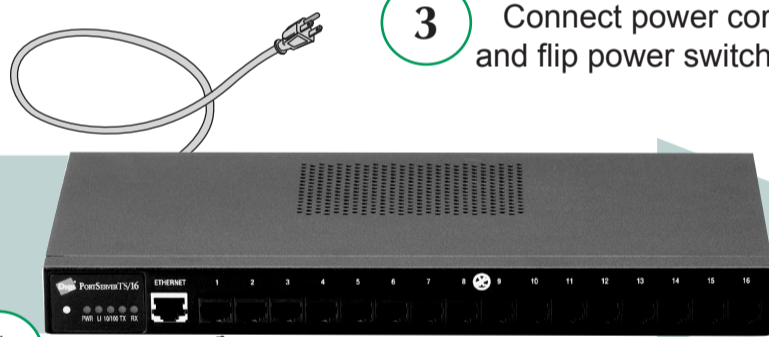
PortServer TS 8

1 Connect Ethernet cable

2 Connect serial devices



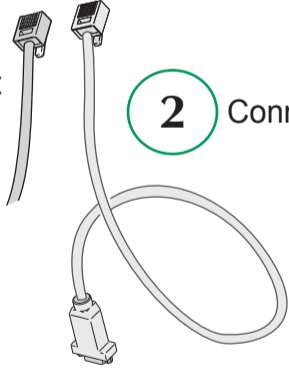
3 Connect power cord and flip power switch on



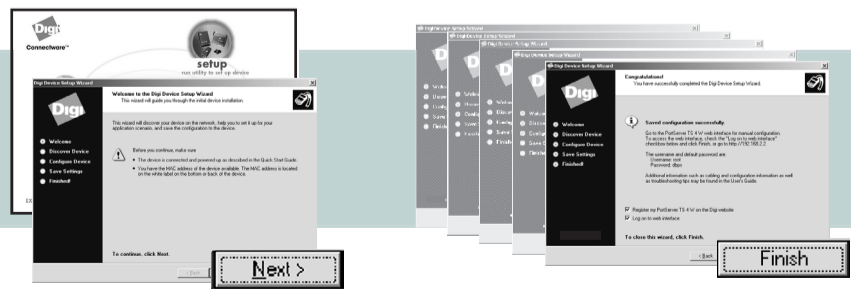
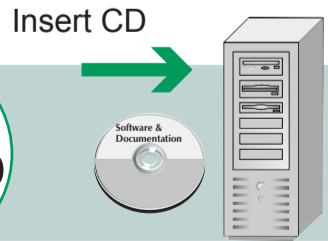
PortServer TS 16

1 Connect Ethernet cable

2 Connect serial devices



RUN WIZARD

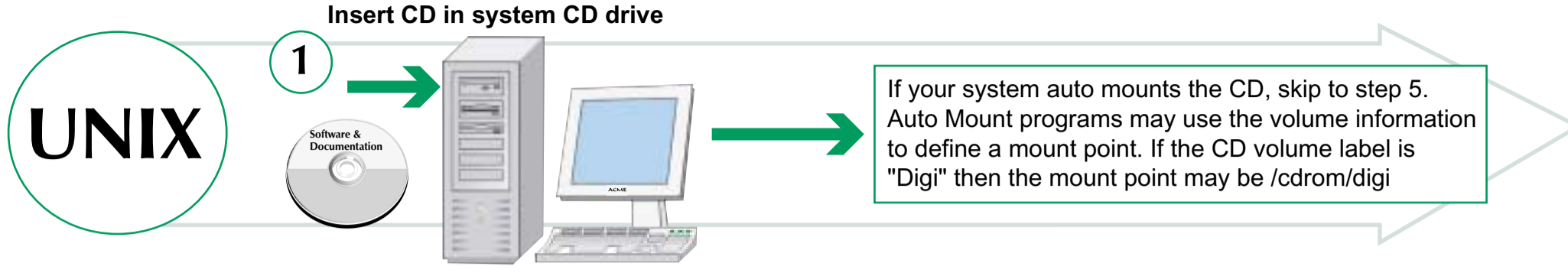


Congratulations!
Configuration is complete.
Go to the User's Guide on the CD for more information.

If you have a UNIX system and it does not use an auto-mounter, you will need to manually mount the CD. See the back of this guide for UNIX specific instructions.

Follow wizard

Accessing the CD from a UNIX System



2 Determine your CD device

Common names for CD-ROM devices:

NAME	EXAMPLE
/dev/cdrom	/dev/cdrom
/dev/cdrom/cdromn	/dev/cdrom/cdrom1
/dev/cdn	/dev/cd0
/dev/dsk/cktmdn	/dev/clt2d0

To list descriptions of devices:
 AIX: `lscfg`
 HPUX: - Make sure you have administrator privileges and your PATH includes /usr/sbin
`ioscan -funC disk`
 Solaris: Most Solaris systems use an auto-mounter. See the man page on vold: `man vold`

3 Identify the mount-directory.

Some common pre-existing mount points:
 /mnt/cdrom /cdrom
 Or create your own: `mkdir /mnt/mycdrom`

HPUX - Check to see if pfs is running
`ps -ef | grep pfs`
 If not, start the daemons:
`pfs_mountd& pfsd&`

4 Mount the CD by entering one of the commands from the following table:

Operating System	Command
AIX	<code>mount -r -v cdrfs device mount-directory</code>
*HPUX	do not use mount, it will not operate correctly <code>pfs_mount device mount-directory</code> See man pages for pfs and pfs_mount for more information.
Linux	<code>mount device mount-directory</code>
SCO UnixWare	<code>mount -r -F cdrfs device mount-directory</code>
SCO OpenServer	<code>mount -r -f ISO9660 device mount-directory</code>
Solaris (Intel & SPARC)	<code>mount -F hsfs device mount-directory</code> Most systems use an auto-mounter. See the man page on vold: <code>man vold</code>

device is the path to the device file assigned to the cdrom drive, mount-directory is the directory where the Digi CD is mounted

*HPUX When finished, leave the CD directory and `pfs_umount cd`
`pfs_umount mount-directory`
 (If you inadvertently use `umount` instead of `pfs_umount`, kill the pfs daemons to remove the CD-ROM.)

5 Navigate to mounted CD directory, enter: `./setup`

If you see DISPLAY permission errors when running the CD, you may want to verify your DISPLAY variable is set. To set the DISPLAY variable:
`DISPLAY=localhost:0.0; export DISPLAY`
 AND/OR
`xhost +localhost`